

# ALEXA XT and ALEXA XT Plus



CONFIGURATION OVERVIEW – 1.2.2 / 2015.03

© 2010 Arnold & Richter Cine Technik GmbH & Co. Betriebs KG. All rights reserved. This material is provided "as is" for information purposes only without any warranty. ARRI assumes no responsibility with regard to the performance or use of the products or typographical errors or inaccuracies of given information. Product specifications are subject to change without notice. For a full listing of all available components consult the price list.

## ALEXA XT & ALEXA XT Plus Sets



### ALEXA XT Basic Camera Set K0.71350.D

Includes:  
 K1.71300.0 - ALEXA XT camera body, XR Module, IFM-1 filter holder, tool set and manual  
 K2.72034.0 - ProRes Codec Option  
 K2.72035.0 - QuickTime File Format Option  
 K2.72018.0 - SD Card  
 K2.72008.0 - Electronic Viewfinder EVF-1  
 K2.74001.0 - Viewfinder Mounting Bracket VMB-3  
 K2.72012.0 - Viewfinder Cable Short (0.35m/1.2ft) KC 150-S  
 K2.72007.0 - Center Camera Handle (CCH-1)  
 K2.72002.0 - Wedge Adapter (WA-1)  
 K2.72076.0 - High Speed License Key  
 K2.72067.0 - Anamorphic De-squeeze License Key  
 Note 1: XR Capture Drives, SxS Adapter, CFast 2.0 Adapter, docks, SxS PRO cards, SxS PRO+ cards, CFast 2.0 cards, FSND filters, on-board battery adapters and DNxHD software license key are not included and can be ordered separately.  
 Note 2: SxS PRO+ cards are supported with Software Update Packet 10 Open Beta 2 or later.

### ALEXA XT Pro Camera Set KB.71570.D

Includes:  
 K0.71350.D - ALEXA XT Basic Camera Set  
 K2.48838.0 - SxS Adapter  
 K0.71040.0 - XR Capture Drive Set 4x 512 GB  
 K2.72021.0 - ALEXA Ethernet/RJ-45 Cable (3.00m/9.8ft) KC 153-S  
 K2.72031.0 - ALEXA 12V Accessory Cable KC 154-SP-S  
 K2.72015.0 - Handle Extension Block (HEB-2)  
 K2.72083.0 - Shoulder Pad (SP-4)  
 K2.74000.0 - Viewfinder Extension Bracket VEB-3  
 K2.72013.0 - Viewfinder Cable Medium (0.65m/2.1ft) KC 151-S  
 K2.66172.0 - Bridge Plate Adapter (BPA-2)  
 K2.72017.0 - Leveling Block (LB-1)  
 Note 1: FSND filters, docks or on-board battery adapters are not included and can be ordered separately.  
 Note 2: SxS PRO+ cards are supported with Software Update Packet 10 Open Beta 2 or later.



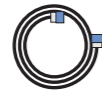
### ALEXA XT Plus Basic Camera Set K0.71355.D

Includes:  
 K1.71310.0 - ALEXA XT Plus camera body, XR Module, IFM-1 filter holder, tool set and manual  
 K2.72034.0 - ProRes Codec Option  
 K2.72035.0 - QuickTime File Format Option  
 K2.72018.0 - SD Card  
 K2.72008.0 - Electronic Viewfinder EVF-1  
 K2.74001.0 - Viewfinder Mounting Bracket VMB-3  
 K2.72012.0 - Viewfinder Cable Short (0.35m/1.2ft) KC 150-S  
 K2.72007.0 - Center Camera Handle (CCH-1)  
 K2.72002.0 - Wedge Adapter (WA-1)  
 K2.72076.0 - High Speed License Key  
 K2.72067.0 - Anamorphic De-squeeze License Key  
 K2.72094.0 - DNxHD License Key  
 Note 1: XR Capture Drives, SxS Adapter, CFast 2.0 Adapter, docks, SxS PRO cards, SxS PRO+ cards, CFast 2.0 cards, FSND filters and on-board battery adapters are not included and can be ordered separately.  
 Note 2: SxS PRO+ cards are supported with Software Update Packet 10 Open Beta 2 or later.

### ALEXA XT Plus Pro Camera Set KB.71580.D

Includes:  
 K0.71355.D - ALEXA XT Plus Basic Camera Set  
 K2.48838.0 - SxS Adapter  
 K0.71040.0 - XR Capture Drive Set 4x 512 GB  
 K2.72021.0 - ALEXA Ethernet/RJ-45 Cable (3.00m/9.8ft) KC 153-S  
 K2.72031.0 - ALEXA 12V Accessory Cable KC 154-SP-S  
 K2.72015.0 - Handle Extension Block (HEB-2)  
 K2.72083.0 - Shoulder Pad (SP-4)  
 K2.74000.0 - Viewfinder Extension Bracket VEB-3  
 K2.72013.0 - Viewfinder Cable Medium (0.65m/2.1ft) KC 151-S  
 K2.66172.0 - Bridge Plate Adapter (BPA-2)  
 K2.72017.0 - Leveling Block (LB-1)  
 Note 1: FSND filters, docks or on-board battery adapters are not included and can be ordered separately.  
 Note 2: SxS PRO+ cards are supported with Software Update Packet 10 Open Beta 2 or later.

## Cables



### ALEXA 3D Cable Set, K0.71032.0

One ALEXA EXT to EXT Cable for sensor and HD outputs sync and one ALEXA Ethernet to Ethernet Cable for camera settings sync (Set incl. KC155-S, K2.72032.0 and KC156-S, K2.72033.0)

### UMC Connection Cable K-UMC3-ALEXA, K2.65239.0

ALEXA 12V Accessory Cable KC 154-SP-S, K2.72031.0 (coiled)  
 ALEXA Ethernet Cable 3m KC 153-S, K2.72021.0  
 ALEXA EXT - EXT Cable 2m KC 155-S, K2.72032.0  
 ALEXA Ethernet-Ethernet Cable 2M KC 156-S, K2.72033.0  
 ALEXA Ethernet Remote Cable (1m/3.3ft) KC 158-S, K2.72041.0  
 ALEXA Ethernet Remote Cable (2m/6.6ft) KC 157-S, K2.72040.0

ALEXA Ethernet Extension Cable (15m/50ft) for RCU-4 KC 159-S, K2.72043.0 (up to three KC-159-S for total length of 47m/154ft with K2.72040.0 or 46m/151ft with K2.72041.0)

## Power Supply & Battery Adapter



Power Cable  
 KC-20 K2.41966.0,  
 KC-29 K2.44693.0 (coiled)

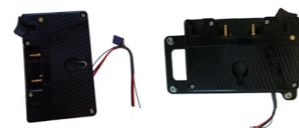


26V power supply NG 12/26 R  
 K2.47351.0



Battery Adapter Back for V Mount, BAB-V K2.72010.0

Battery Adapter Top for V Mount, BAT-V K2.72011.0



Battery Adapter Back for Gold Mount, BAB-G K2.72003.0

Battery Adapter Top for Gold Mount, BAT-G K2.72006.0

## Viewfinder System



Electronic Viewfinder  
 EVF-1, K2.72008.0

Viewfinder Cable  
 35 cm, KC 150-S K2.72012.0  
 65 cm, KC 151-S K2.72013.0  
 200 cm, KC 152-S K2.72014.0



Viewfinder Extension Bracket  
 VEB-3, K2.74000.0



Viewfinder Mounting  
 Bracket, VMB-3 K2.74001.0



Heated Eycup, HE-7  
 K2.0003898

## Support, Handles & Elec. Accessories



Remote Control Unit  
 RCU-4, K2.72036.0  
 (incl. ALEXA Ethernet  
 Remote Cable (2m/6.6ft)  
 KC 157-S K2.72040.0)



ALEXA Rain Protector  
 ARP-1, K2.72026.0



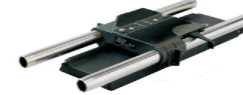
Bridge Plate, BP-12 Set  
 (incl. base plate & rods)  
 for 19 mm, K0.71031.0  
 Bridge Plate, BP-13 Set  
 (incl. base plate & rods)  
 for 15 mm, K0.60165.0



Bridge Plate Adapter  
 BPA-2  
 (for BP-3, 5, 8 or 9)  
 K2.66172.0



Universal Adapter  
 Plate UAP-1  
 K2.72102.0



Bridge Plate BP-8  
 K2.47090.0



Wedge Adapter, WA-1  
 (for Quick Release HD-  
 Baseplate) K2.72002.0  
 (spare)



Quick Release  
 HD Baseplate  
 K2.47796.0



Shoulder Pad  
 SP-4  
 K2.72083.0



Low Mode Support  
 Set, LMS-3  
 K2.72023.0



Centre Camera Handle  
 CCH-1, K2.72007.0  
 (spare)



Side Camera Handle,  
 SCH-1 K2.72016.0



Adjustable Center Grip  
 tall, ACG-2, K2.72022.0



Handle Extension  
 Block HEB-1  
 (without tape hook)  
 K2.0001016



Handle Extension  
 Block HEB-2  
 (with tape hook)  
 K2.72015.0



ALEXA  
 Handgrip Set  
 K0.71033.0



Camera Handgrip  
 Right, K2.45886.0



Extension for  
 Handgrip  
 K2.47136.0



Leveling Block  
 LB-1, K2.72017.0



Ultrasonic Distance Measure  
 UDM-1 Set K0.60055.0  
 Cable UDM-ALEXA K2.65261.0



Ext Distribution  
 Box EDB-1  
 K2.72038.0



Case for ALEXA  
 K2.72030.0



FSND Filter Set (Full), K2.72139.0 includes:  
 FSND filters 0.3, 0.6, 0.9, 1.2, 1.5, 1.8, 2.1 and 2.4,  
 an optical clear filter, the IFM shim, the filter insertion tool  
 and a case with space for 8 FSND filters.  
 Please view price list for other sets and individual filters.



Rod Mounting Bracket  
 RMB- 2, K0.60209.0