



PRODUCT HIGHLIGHTS AND SOLUTIONS

April 2024



The ARRI camera system philosophy	4	A passion for lighting	39
Live camera		LED lighting fixtures & software	
ARRI Live Entertainment	8	ARRI's LED ecosystem	42
ALEXA 35 Live – Multicam System	10	SkyPanel family	44
		SkyPanel X	46
Cine cameras		SkyPanel	52
ALEXA 35	16	Orbiter	56
ALEXA Mini LF	20	L-Series Plus	60
		LiOS	62
Cine lenses		Photometrics App	63
ARRI Signature Prime lenses	22	Stellar App	64
TRINITY Live	24	ARRI LiCo App	65
LPL mount	25	Photography and video	66
Impression V Filters	26		
		Solutions & applications	
Camera Stabilizer Systems		Introduction	78
TRINITY 2 and ARTEMIS 2	28	Virtual Production	70
360 EVO	30	Integrated Systems	72
Digital Remote Wheels DRW-1	31	Workflow Innovation	74
Digital Encoder Head DEH-2	31	ARRI LightNet	76
		ARRI Certified Pre-Owned	78
Pro Camera Accessories Electronic Control System		Learn & help	
Hi-5 hand unit	32	Workflow Solutions	80
RIA-1 radio hub	34	ARRI YouTube Channel	81
Zoom Main Unit ZMU-4	35	ARRI Academy	82
		ARRI Service	84
Pro Camera Accessories Mechanical accessories			
Accessories for Sony cameras	36		
Lightweight Matte Box LMB 4x5	37		
Matte Box Checker	37		

Photo courtesy – front cover: SkyPanel image © Brendan Spinec, image of ARRI Stage © Ian Wallman

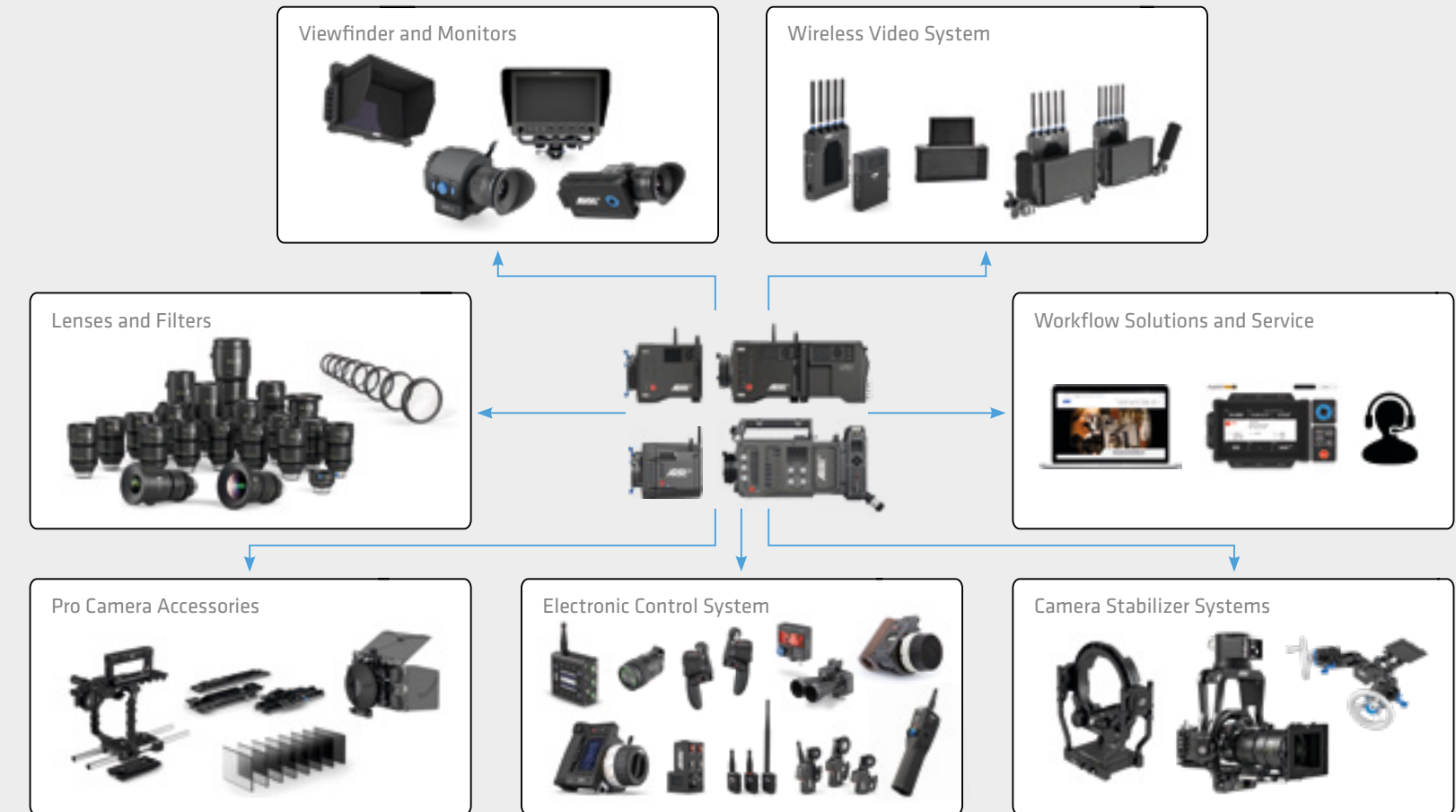
The ARRI camera system philosophy

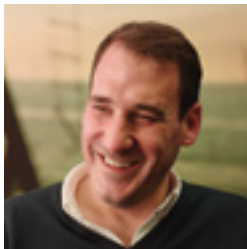
Integrated product lines that stand the test of time

For over 100 years, ARRI has been making tools that expand creative possibilities for filmmakers. Today, the uniquely wide range of interconnected camera products available from ARRI reflects the company's system approach. Every piece of ARRI equipment is assembled under the highest quality standards and subjected to extensive testing before it can leave our facilities. ARRI's experienced craftsmen and women are committed to top-notch precision, which results in products that deliver many years of faithful service. ARRI also works closely with other manufacturers to establish industry standards and maintain third-party compatibility.



A complete ecosystem of connected tools





“ALEXA 35 has the best digital sensor ever made for motion picture photography. It has gifted me more technical and creative freedom.”

Cinematographer James Friend ASC, BSC



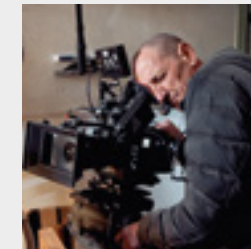
“With [ALEXA 35's] increased light sensitivity and more detail in the highlights, I can be even more bold with my lighting and exposure choices.”

Cinematographer Ari Wegner ACS



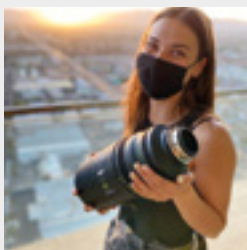
“I am deeply passionate about visual storytelling, but equally about the equipment that extends and inspires us, such as the ALEXA 35, and the milestone that it so clearly is to our industry.”

Cinematographer Adam Suschitzky BSC



“The Impression V Filters are a great tool for creating pictorial images with a subtle disconnection from reality that helps you get closer to subjectivity. They make the Signature Primes even more versatile, giving you different looks with a single set of lenses.”

Cinematographer Pablo Rosso AEC



“We used Signature Primes along with the Mini LF to shoot re-enactments for a documentary on location in Las Vegas. We were constantly on the move and quickly changing lenses, which was easy with the Signature Primes because they're so lightweight. The Signature Primes paired with the Mini LF created a beautiful look with the lights and colors of Las Vegas. The image quality is sharp and clean, but still extremely natural looking. It was a perfect fit for our project!”

Camera operator Sophie Bruza



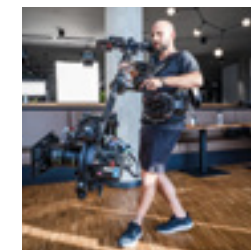
“The production 'Friends of Mark Forster,' captured with the ARRI Multicam System, showed once again that using cinema cameras for live entertainment brilliantly puts the artist into the scene like no other camera does.”

Stephan Thomsen, M00 Video Productions



“I didn't shoot on digital until ALEXA came along.”

Cinematographer Mandy Walker AM, ASC, ACS



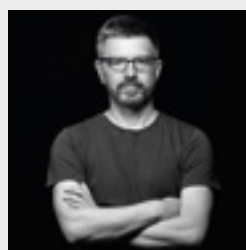
“There is a natural intuition to the TRINITY 2. You have more freedom to discover new moves and it's a lot more limitless.”

TRINITY operator Ari Robbins SOC



“I love the image from the Signatures. It's a very clean look, but not too sharp; it has a softness that seems very film-like to me, and when I put flare in the lens it really looks beautiful. The way out-of-focus areas look with the Signatures is one of the reasons why I want to keep using them.”

Cinematographer Keiko Nakahara



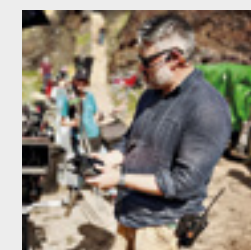
“I had seen a projection of the Signature Primes and they felt made for digital cinematography, with a very cinematic, beautiful look. We decided to use the Signatures as our baseline workhorse.”

Cinematographer Florian Hoffmeister BSC



“ALEXA Mini LF's incredible color rendition, and the sensational images achievable by exploiting mixed lights, leave me free to experiment. The knowledge that everything I frame will reflect my vision without limits, enriching the creative flow, is something I consider of paramount importance.”

Cinematographer Ferran Paredes Rubio



“The Hi-5 continues to amaze me. This latest update enables me to utilize more and more functions quickly, accurately and with confidence. The integration with the Hi-5 and Cine RT lets me be nimbler and more accurate as we shoot. The Hi-5 is reliable, innovative, and best of all, backed up by the people at ARRI who want to keep improving their products to be the best they can be.”

1st AC Phil Smith

ARRI Live Entertainment

Cinematic ARRI look for live, multi-camera productions

ARRI introduces the ALEXA 35 Live - Multicam System, bringing cinematic 4K image quality, unrivalled HDR, and a new level of creative control to live productions in a dockable multi-camera setup. The system combines the ALEXA 35 Live camera, the Live Production System LPS-1 (comprising a Fiber Camera Adapter and Fiber Base Station), the Skaarhoj remote control panel, and a slew of bespoke accessories.

Incorporating the full functionality of a system camera, the ALEXA 35 Live - Multicam System offers a complete solution that is easy to integrate and packed with unique features. It sits alongside other products such as the AMIRA Live, 1800 Multicam System, ARRI and Claypaky lighting, TRINITY Live stabilizer, 360 EVO remote head, and ARRI Solutions, collectively demonstrating ARRI's commitment to enhancing production value in the live entertainment sector.





More...

ALEXA 35 LIVE

Incredible color, detail, depth, and HDR

The ALEXA 35 Live camera offers the uniquely cinematic ARRI look. Supporting an ongoing trend in live productions, the Super 35-sized 4K sensor enables shallow depth of field. Capturing 17 stops of dynamic range—more than any other camera on the market—it handles extreme lighting situations for the best results in SDR and HDR. Colors are rendered accurately through ARRI's proprietary REVEAL Color Science, from bright, saturated hues to the subtlest tones and shades. As a result, even contrasty concert lighting is captured faithfully and skin tones are beautiful, so performers always look their best. Low-light scenes display minimal noise and highlights roll off in a natural, film-like way. Detail, texture, color, and contrast all enhance the visual storytelling.



- Shallow depth of field through Super 35 sensor
- Exceptional 17 stops of dynamic range for the best SDR and HDR images
- REVEAL Color Science for accurate color rendition and beautiful skin tones
- Low noise in low-light scenes
- In-camera, full-quality ProRes recording (LogC4) during live production
- Modular lens mounts (LPL, PL, EF, B4) offer a wide choice of lenses
- Optional upgrade to ALEXA 35 with Cine License
- Stand-alone operation without Fiber Camera Adapter



Live Production System LPS-1

Efficient and seamless fiber solution

The Fiber Camera Adapter of the ALEXA 35 Live - Multicam System attaches to the camera quickly and easily, while the Fiber Base Station integrates seamlessly into the control room or OB vehicle, supporting multiple simultaneous outputs such as UHD and HD as progressive or interlaced video. Connecting them is a SMPTE 311 hybrid fiber cable that includes copper connections to supply up to 400 W of power for the camera and accessories. The hybrid cable also allows uncompressed 4K video transmission over a distance of up to 2 km. Tactical fiber cable lengths of up to 10 km can be used if the camera is powered locally. An extra fiber tunnel and Ethernet tunnel increase the system's flexibility.



Features overview – Fiber Camera Adapter

- Attaches easily to ALEXA 35 Live or ALEXA 35 with minimal cabling
- Industry-standard interfaces (including tally) with familiar, easy to use controls
- SMPTE 311 hybrid cable for uncompressed 4K transmission over 2 km with power
- Up to 400 W available for camera power and 12 V or 24 V accessories
- Camera can be powered locally for tactical fiber cable lengths up to 10 km
- Separate fiber tunnel for additional video, audio, or control signals

Features overview – Fiber Base Station

- Smooth integration into live production environments
- Simultaneous outputs e.g., UHD and progressive or interlaced HD
- Broadcast-quality HD down-converter
- Hot-swappable redundant power supply
- Future-proof through SMPTE 2110 IP interface
- Safe SMPTE 2022-7 “seamless protection switching” redundant network
- Multiple video output options for program video and monitoring





[More...](#)

Multicam System accessories

Bespoke offerings for rapid setups

Accompanying the ALEXA 35 Live - Multicam System is a collection of bespoke, ergonomically designed accessories that allow the camera to be set up for many different live production scenarios with unprecedented speed and efficiency. The ARRI Touchdown base plate system, with its innovative quick-release mechanism, permits rapid transitions between handheld and super-stable tripod operation. A special onboard monitor yoke, low-profile handle, and prominent tally light accommodate common multi-camera environments, while the ARRI Large Lens Adapter dramatically reduces the time and effort required to mount ARRI cameras to large box lenses, offering versatile connectivity and control.





[More...](#)

ALEXA 35

Raising the bar

ALEXA 35 is a 4K Super 35 camera that elevates digital cinematography to unprecedented heights. ARRI's first new sensor for 12 years builds on the evolution of the ALEXA family over that period, delivering 2.5 stops more dynamic range, better low light performance, and richer colors. The new REVEAL Color Science takes full advantage of the sensor's image quality, while ARRI Textures enhance in-camera creativity. Easy operation, robust build quality, and new accessories round out the ALEXA 35 platform.



- Industry-leading image quality at native 4K and 120 fps
- 17 stops of dynamic range with filmic highlight roll-off
- "High ISO" up to EI 6400 and Enhanced Sensitivity Mode
- Richer color rendition through REVEAL Color Science
- More creative control via ARRI Textures and wide lens choice
- Complete range of accessories and workflow tools





Support for any situation ALEXA 35 system components

[More...](#)

ARRI has crafted a new line of bespoke ALEXA 35 accessories that expand the camera's capabilities and ensure maximum speed and versatility on set. Closely integrated electronic accessories offer additional power outputs or extended audio features. A complete new set of mechanical support items provides flexible options for any situation, scaling quickly and easily from a small and lightweight setup to a full-blown production configuration. ALEXA 35 is available in sales sets that group together components suitable for different shooting styles and production types, with further accessories and system options facilitating countless setups.



Lightweight Set

Production Set

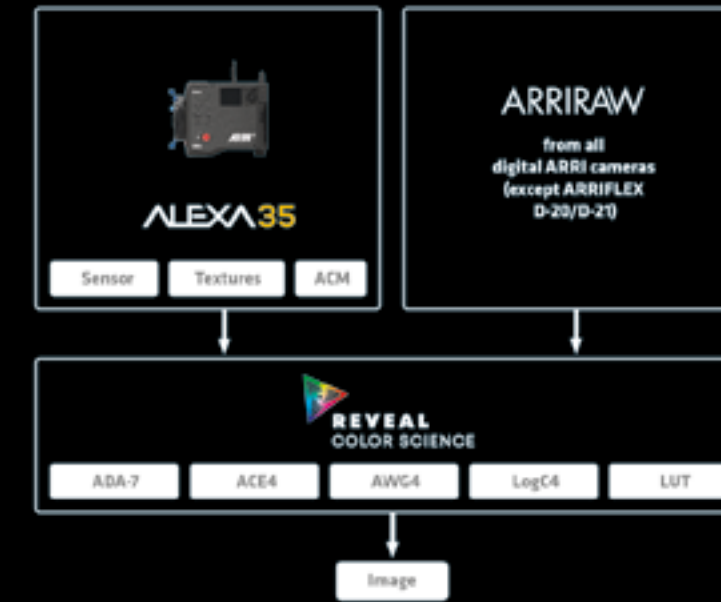


[More...](#)



Faster workflow, higher image quality

ARRI's discussions with filmmakers and a careful review of the image pipeline have led to significant image quality enhancements and a faster, easier workflow. REVEAL Color Science is a completely new image processing chain used by ALEXA 35 internally. Our latest ARRI Image Software Developer Kit has made REVEAL Color Science also available for ARRIRAW from all other digital ARRI cameras*.



It includes an improved debayering algorithm for cleaner compositing, a new color engine for more accurate color reproduction, a new wide gamut native color space for faster grading, new LogC4 encoding to contain the increased dynamic range, and new LogC4 LUTs (Look Up Tables) for enriched color fidelity.

Although it is possible to intercut images from all digital ARRI cameras with their original color science, a perfect color match with the ALEXA 35 can be achieved by processing ARRIRAW from any digital ARRI camera* through REVEAL Color Science. To do so, you can use the ARRI Reference Tool and/or many third-party software tools.

*except ARRIFLEX D-20/D-21



[More...](#)

ALEXA MINI LF

Large format, small camera

Embraced by the world's leading filmmakers as soon as it was announced, the ALEXA Mini LF is ARRI's flagship large-format camera. Versatile and adaptable due to its compact size, low weight, and multiple recording formats, the Mini LF offers the best overall image quality for large format and an exciting new REVEAL Color Science post workflow.



- Highest dynamic range of any large-format camera
- Creative and practical advantages over smaller formats
- More accurate colors with new REVEAL Color Science post workflow for ARRIRAW
- Compatible with CODEX High Density Encoding (HDE) for up to 40% file size reduction
- Used on many award-winning productions
- Proven sensor technology, trusted by the best in the business
- Taking owner-operator careers to the next level



Discover Large Format Showcase

[More...](#)



- Rugged yet sleek 7" onboard monitor, developed by ARRI and SmallHD
- Bright display with color-accurate ARRI image quality
- Full ARRI camera and menu control via customizable touchscreen and buttons
- Multiple connection options for different camera configurations and uses
- Includes foldable sun hood, easy to mount on the monitor
- Includes two-axis MAC-1 adjustable friction arm for one-handed repositioning



[More...](#)

Camera Control Monitor CCM-1 Freedom and functionality for operators

The CCM-1 is a 7" onboard monitor that provides full camera control and menu access for the ALEXA 35 and ALEXA Mini LF, using the camera's VF connector. Opening up new camera configuration possibilities, the CCM-1 combines ARRI color accuracy and a bright display with customizable controls and rugged build quality. The CCM-1 provides an alternative control, menu, and image interface to the MVF-2 viewfinder, which it can either replace entirely or work alongside.





[More...](#)

Signature Prime

The Signature Primes encompass a uniquely wide focal length range of 12 mm to 480 mm. Solidly built and designed to work flawlessly in the most extreme on-set conditions, they offer an immersive look that will not go out of style: warm textures, pleasing skin tones, deep shadows and yet crisp blacks, smooth focus fall-off, and bokeh like looking through a window in the rain.



- All T1.8, aside from the 200 mm (T2.5) and 280 mm (T2.8)
- The new ARRI Extender turns the 280 mm (T2.8) into a 480 mm (T4.95)
- Exceptional background separation
- Soft and delicate flares
- Fine details beautifully rendered
- Very low distortion and chromatic aberration
- Ideal for HDR workflows



Discover Lens Showcase

[More...](#)



More...

Signature Zoom

Accompanying and matching Signature Primes, ARRI Signature Zooms render the most natural and beautiful images ever seen from a cine zoom. The four lenses display consistently high image quality whatever the zoom or iris setting, and—with the dedicated extender—offer an unrivalled focal length range of 16 mm to 510 mm. Their optical and mechanical performance sets a new high standard for the industry.



- All four zooms T2.8
- The new ARRI Extender turns the 65-300 mm (T2.8) into a 110-510 mm (T4.95)
- Same timeless look as Signature Primes
- Creamy out-of-focus highlights and superb close focus
- No ramping—consistent exposure through all focal lengths
- Minimal color aberration and focus breathing
- Ideal for HDR workflows



- LPL mount available for ALEXA 35, ALEXA LF/Mini LF, ALEXA Classic/XT/SXT/Mini, AMIRA, and ALEXA 65
- Third-party cameras can also be fitted with LPL mount
- Purpose-designed for large-format digital cinematography
- PL-to-LPL adapter allows the use of PL mount lenses
- Robust and rock-steady locking mechanism



More...

Universal compatibility

Ready for use on all professional cameras

Signature Prime and Signature Zoom lenses are equipped with the LPL lens mount. ARRI has shared LPL specifications openly and free of charge across the industry, allowing other manufacturers to offer LPL adapters, director's viewfinders, and lens testing tools that make the Signature family, and other LPL lenses, universally compatible. The LPL mount works across all formats, from Super 35, through large format, up to 65 mm. A wider diameter and shorter flange focal depth allow for high-performance, compact lens designs that would not be possible in a PL mount lens.





More...

Impression

Creative filters. Tailored look.



ARRI's Image Comparison Tool
More...



Impression V for vintage looks - The new line of ARRI Impression Filters are eight Impression V Filters that give a vintage feel to Signature Prime and Zoom lenses. The four negative and four positive diopter filters incrementally shift the focus characteristics of the image, allow a range of detuned looks to be created with one set of Signature lenses.

- Exciting new creative option for custom looks
- Controllable, repeatable detuning of Signature lenses on set
- Easy magnetic attachment to the back of all Signature lenses
- Cost-effective way to achieve multiple looks
- Highest ARRI standards of quality and precision

Positive Impression V Filters*

Positive strength Impression V Filters produce 'bauble' bokeh in the background, where out-of-focus highlights are bright in the middle and blurry at the edges, especially towards the center of the image. Foregrounds may seem sharper.

Around the outer parts of the frame, positive filters add a swirling bokeh effect that envelops central subjects and provides a wonderful look for capturing intimate moments. Skin tones seem to glow, and the whole image has a feeling of nostalgic glamor.

*ALEXA Mini LF, Signature Prime 47 mm, T1.8, Impression V Filter IV 330P



Original image with no filter*

Signature Primes and Signature Zooms in their original, unfiltered state are designed to be extremely well corrected for spherical aberration. Out-of-focus areas in the image behave consistently in the foreground and the background, displaying bokeh that is gentle and pleasing right across the frame.

*ALEXA Mini LF, Signature Prime 47 mm, T1.8



Negative Impression V Filters*

Negative filters do the opposite. In the background, 'donut' bokeh gives out-of-focus highlights a bright ring around the edges, making them sharper. Instead of blending into each other, they overlap to create vibrant, abstract textures.

Overall, the negative filters have a grittier, more unsettling look. Background bokeh can be taken to extremes that completely alter the viewer's emotional perception of subjects at the point of focus, while foregrounds will tend to get a little softer.

*ALEXA Mini LF, Signature Prime 47 mm, T1.8, Impression V Filter IV 290N





[More...](#)

TRINITY 2 ARTEMIS 2

One modular system, two new stabilizers

The next generation of camera stabilizers: TRINITY 2 and ARTEMIS 2. Designed and built in Germany, the ARRI stabilizer system enables the most versatile, creative, and perfectly steady camera moves. Many new features have been implemented, based on customer feedback, making this the most sophisticated camera stabilizer system ever developed. Durable and upgradeable, it offers the longest, most secure return on investment for owner-operators.



- Effortless transition between the two stabilizers for different applications
- Setting new industry standards for connectivity, intelligent power management, and user interface
- Interchangeable battery systems (B-Mount, V-Mount, Gold Mount)
- Easy to learn and adopt thanks to design quality and intuitive user interface
- Modular system enables easy upgrade from ARTEMIS 2 to TRINITY 2



- Optimal integration with the ARRI Multicam System and third-party broadcast applications
- Extends the life of TRINITY Gen.1 and allows operators to expand into new markets
- Positioning the wireless video link at the bottom of the system lightens the load by up to 4 kg / 8.8 lb and provides a more stable signal
- Further upgrades, like the 24 V camera power and Master Grip TRINITY are available for the TRINITY Live system



[More...](#)

TRINITY LIVE

Dynamic stabilized camerawork for live broadcasts

TRINITY Live is a refurbished TRINITY Gen.1 with an upgrade that turns it into the ideal stabilizer system for multi-camera productions. Whether for sports, music concerts, theatrical events, or live TV shows, TRINITY Live seamlessly weaves vibrant camerawork and a cinematic aesthetic into standard broadcast workflows, enabling extraordinary angles and truly dynamic camera moves.



More...

360 EVO

Rock steady and roll ready

The new, top-of-the-line 360 EVO stabilized remote head lives up to its name: 360-degree rotation not only on the pan axis, but also on the roll axis, enables filmmakers to take their creative visions even further. It offers an easy upgrade path for SRH owners and seamless adoption for TRINITY operators, thanks to shared software and accessories, as well as remote system integration, heavy payloads, versatile connectivity, and an unbeatable price-performance ratio.



Digital Remote Wheels DRW-1

Traditional movie-style operating

The DRW-1 combines state-of-the-art digital technology with the mechanical touch and feel of ARRI's classic crank wheels.

Compatible with all SRH remote heads and the TRINITY 2

- LBUS protocol for control of the ARRI SRH product family
- Sophisticated digital workflow for maximum control



- Full-circle rotation on the roll axis for more creativity
- Fast setups even with long lenses and heavy payloads
- Remote system integration and versatile connectivity
- Shared hardware and software with TRINITY 2
- Upgrade path for SRH-360 owners

Digital Encoder Head DEH-2

Precise control via remote fluid head

ARRI's DEH-2 is the second fully digital encoder head that communicates through the LBUS protocol with the SRH product family.

- High-resolution encoding – 4 million digits per 360° turn
- Exceptionally fluid pan and tilt modes for smoother movement
- Can be combined with ARRI Master Grips and OCU-1
- Ideal for AR, VR, MRPS productions, broadcast, and feature films





Hi-5 Hand Unit

5th generation intelligent hand unit

[More...](#)

The ARRI Hi-5 is the most sophisticated hand unit on the market, providing reliable wireless camera and multi-axis lens control. Weatherproof and solidly built, it features an exceptional radio link range and unique, swappable radio modules for different territories and shooting challenges.

Hi-performance | Hi-versatility | Hi-speed | Hi-tech | Hi-reliability



Hi-5

Recent features for Hi-5:

- RF-2400 and RF-900 radio modules: Incredible signal strength and range
- Focusbug License: Distance readout and Focusbug Cine RT control on your fingertips
- Frequency Analyzer: Helping you select a radio channel
- User Button Home Screen: For custom layouts
- Cinefade Control: Dynamic depth of field, ND and Rotapola control
- AUX and Virtual Axis control: Extended configuration possibilities
- New dedicated Iris, Left-Handed and Reverse Smart Rings



Watch the Tech Talk

[More...](#)

Hi-5 Ecosystem



[More...](#)

- **RF-EMIP, RF-2400, and RF-900**
Three interchangeable radio modules, each suitable for different frequency regulations and shooting situations.
- **RIA-1 Radio Interface Adapter**
Works as a motor controller that supports ARRI radio modules and can function as either a receiver or transmitter.
- **Li-ion Battery Pack**
ARRI's high-capacity Li-ion Battery Pack allows a precise readout of remaining battery capacity to be displayed on the Hi-5 screen.

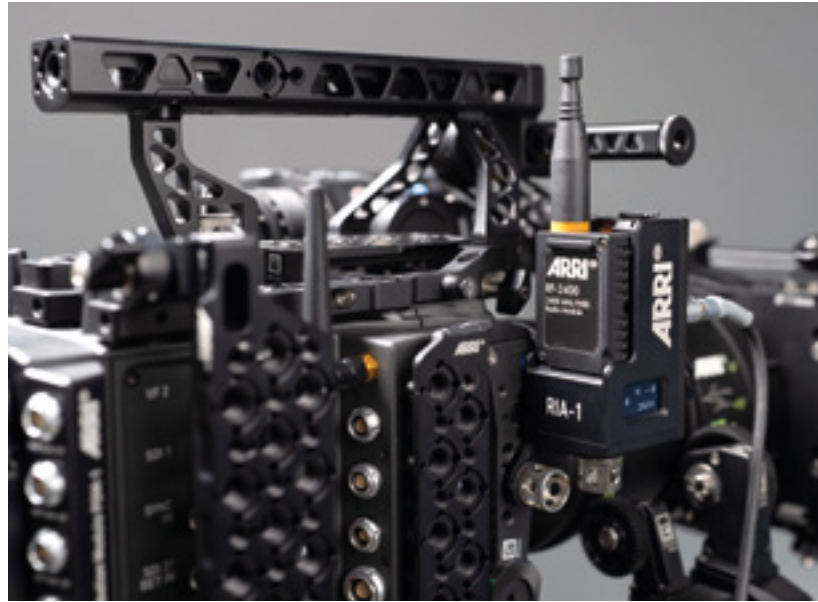


- **Smart Focus Rings**
Speed up your workflow with our large selection of pre-marked focus rings, featuring electronic ring detection.
- **ECS Sync App**
This iOS app enables file sharing, news and software updates, and answers FAQs about the ECS ecosystem.



Discover the ECS Sync App

[More...](#)



- Supports ARRI's exchangeable radio modules: RF-EMIP, RF-2400, RF-900
- RX/TX switch: operates either as a receiver or a transmitter
- Can connect to a camera for power, start/stop/tally, and camera control, and to LBUS devices for lens control
- Compact motor controller, compatible with any camera
- Multiple 3/8-16 and M4 mounting interfaces
- Supports common distance measurers like Focusbug Cine RT, ARRI UDM-1, and Cine Tape Measure via SERIAL interface



Radio Interface Adapter RIA-1

A hub for the Hi-5 ecosystem

[More...](#)

Capable of functioning as a receiver, transmitter, or motor controller, the RIA-1 Radio Interface Adapter is a highly versatile component in the Hi-5 ecosystem. Compact and robust, it supports ARRI's exchangeable radio modules and provides multiple connectors for wireless control of ARRI or third-party cameras and lenses.



[More...](#)

Zoom Main Unit ZMU-4

Flexible connectivity and control

The new ZMU-4, is a modern version of the classic and ubiquitous zoom demand. Rugged, weather-resistant, and ergonomically designed, the ZMU-4 seamlessly transitions between wired and wireless configurations. Its unprecedented connectivity enables versatile, clutter-free camera builds and faster on-set workflows.



ZMU-4



- Easy switch between wired and wireless operation
- Camera and lens motor control combined in one unit
- Exchangeable radio modules for challenging environments
- Wireless expansion for other devices
- Easily readable status display with lens data
- Robust, weather-proof, ergonomic design

Pro Camera Accessories for Sony Cameras Professional functionality

ARRI's latest Pro Camera Accessories range offers new possibilities when shooting with the Sony Burano. Taking inspiration from the popular Venice 1/2 and FX9 accessories, the new components extend rigging options and enhance ergonomics for both cine and broadcast productions. The setup can easily be switched between shoulder and tripod without any tools, while new NATO rail side brackets and clamps offer quick-release transmitter and rod mounting.



Watch the Tech Talk
[More...](#)

PCA for Sony Burano

- New NATO rail side brackets and clamps for quick-release accessories
- Supports Sony Burano, FX9, and ARRI top handles
- Tool-less change from shoulder to tripod or stabilizer

PCA for Sony Venice 1/2 and Rialto

- Industry-standard rigging and support options
- Compatible with Wooden Camera power accessories
- Rialto accessories can be mounted independently of each other



Lightweight Matte Box LMB 4x5 The Industry Standard

The LMB 4x5 is the fourth generation of ARRI's standard Lightweight Matte Box, now adaptable from an ultra-lightweight, single-stage, clamp-on configuration to a studio-ready, tilting, swing-away setup with four filters. A truly modular offering, the LMB 4x5 allows use of 4x4" and 4x5.65" filters on lenses ranging in front diameter from 62 mm to 165 mm and supports many legacy accessories.



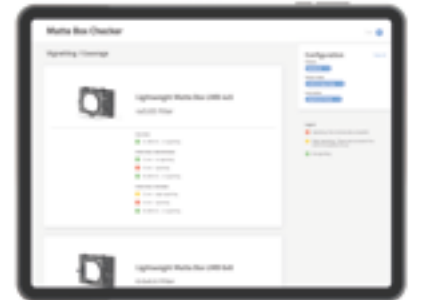
Watch the Tech Talk
[More...](#)



[More...](#)

Matte Box Checker Have you tried our new online tool yet?

Our newly released online tool lets you check ARRI matte box and lens compatibility without having to set foot in a test room. Simply select your camera, sensor mode, and lens choice, and the Matte Box Checker will indicate the coverage and vignetting with different matte boxes.



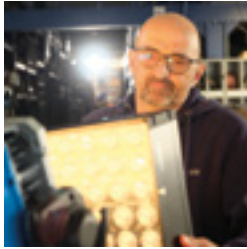


A passion for lighting

Pure creativity, expressive power, and elegant brilliance in every detail



Light is an integral part of our lives and always has been. It is essential to everyone. ARRI lives and breathes lighting; we have been making lights for as long as we've been making cameras, so it's in our DNA. The versatility of ARRI luminaires in combination with the newest firmware features and a wide range of accessories will illuminate your artistic vision. ARRI lighting technology pushes the boundaries of what is creatively possible, opening incredible new opportunities and applications. State-of-the-art fixtures and immensely flexible control options provide the toolset you need to save time on set and the freedom to focus on your creative process. Interact with the light, paint with the light, and make the light work for you.



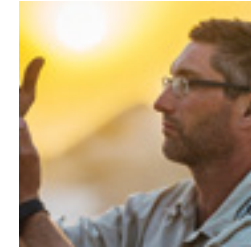
“For me, SkyPanel X will open up two new doors. On the one hand, there's the immense output due to the perfected optics, and on the other hand, there's the versatility because it's not just a spotlight; it also outperforms all comparable lamps also when used as a soft light. What truly excites me is how a spotlight can be generated from three individual units. To me, this will undoubtedly become the replacement for 4KW HMIs in the future. It boasts full color and level control—which is something I've been eagerly anticipating for a long time.”

Uwe Greiner, gaffer, Germany



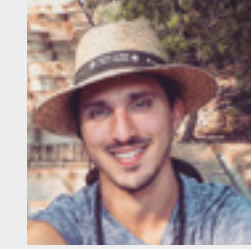
“The massive output, its combination possibilities - I could almost shoot a whole movie with only SkyPanel X.”

Lisa Maria Müller, gaffer, Germany



“For ARRI's LED units, Stellar is wonderful and extremely useful for wireless control. The app is really easy to use and self-explanatory, and by using RDM instead of DMX, it is also unbelievably fast to set up. Stellar is intuitive, playful control at your fingertips.”

Timm Brueckner, gaffer, Germany



“The SkyPanel is an incredible fixture in the studio. I use it in multiple configurations, both as a top light and for backgrounds or to create backlighting on large widths. I am regularly offered new products but each time none match the SkyPanel.”

Sidney Baucheron, chief electrician & gaffer, France



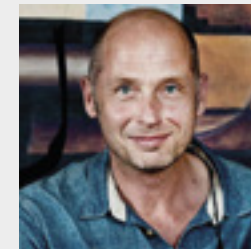
“The ARRI Orbiter represents an exciting new chapter for my work as a lighting designer in theater, opera, and dance. The ARRI SkyPanel S60 and S360 have been essential tools for so much of my work internationally. The quality of light from both the SkyPanel and Orbiter is outstanding and provides the gorgeous color and incredible intensity that directly matches the larger-than-life world we live in today.”

Brandon Stirling Baker, Lighting Director, Boston Ballet, US



“Orbiter makes it so easy to change colors. It offers so much variety! Creative use of color is what's trendy right now, and clients want the image to be more energetic, more colorful, more powerful. With Orbiter, I'll be able to create brighter, more intense images.”

Vika Pobeda, fashion photographer, US



“The ARRI SkyPanel gives filmmakers the ability to quickly change colors without the need for gels. This creates new choices and allows for more creativity on set.”

Helmut Prein, gaffer, Germany



“Orbiter has a very impressive function: the color sensor. It can tell you the overall color temperature on set and adjust itself to the right color temperature to make the lighting look harmonious. This is definitely a great help, since it's all about efficiency nowadays. Also, the wireless DMX can control color temperature, brightness, and special lighting effects, which saves lots of time adjusting lights and gives you time to create better shots.”

Jimmy Huang, gaffer, China



More...

ARRI's LED ecosystem

Advanced lighting products with intelligent control options

ARRI offers a complete LED ecosystem—a wide range of products, accessories, and features that speed up the lighting workflow and allow more time for creativity. A broad portfolio of high-quality luminaires such as the SkyPanel family, Orbiter, and L-Series Plus provides reliable tools for any application in the film, TV, photography, theater, and live entertainment industries.

With the addition of Stellar, the lighting control app from ARRI, or ARRI LiCo, a bluetooth lighting communication app, using these professional fixtures has become faster, easier, and more intuitive than ever before. Ongoing firmware and LiOS updates for the fixtures complete the system and allow for new, cutting-edge features.





More...

SkyPanel family

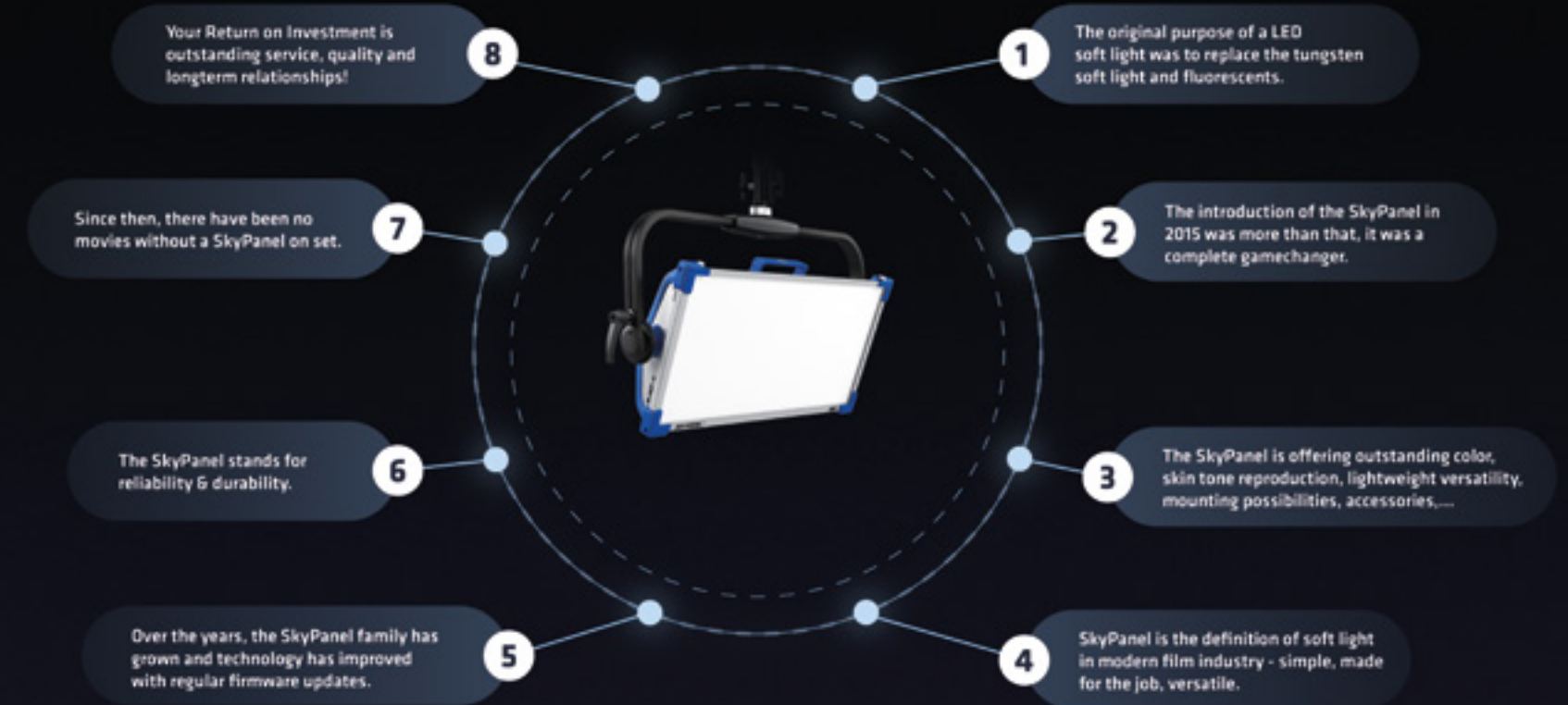
Craft the perfect lighting - the SkyPanel way

ARRI's SkyPanel family is well established as the gold standard for industry lighting professionals. For over eight years, creatives and technicians have chosen SkyPanel as a dependable solution for projects of all kinds. Its award-winning quality, outstanding lumen efficiency, and native soft light technology have made it an ubiquitous presence on film sets worldwide. The SkyPanel family recently became even more versatile with the introduction of SkyPanel X. While the SkyPanel was designed to be a soft light for studio use, the SkyPanel X is optimized for both hard and soft light in all weather conditions, bringing improvements in terms of output, IP rating, color rendition, dimming quality, and controllability.



The ARRI SkyPanel family consists of:

- The classic SkyPanel, an LED soft light that has set a new industry standard, and
- SkyPanel X, a modular, all-weather LED panel that delivers both native hard light for long throws and native soft light for close distances



Return on Investment lifecycle More than a light

Manufactured in Germany to the highest standards, this durable fixtures feature a strong aluminum core with fiberglass-reinforced thermoplastics for maximum resilience, even during heavy-duty use on busy film sets. SkyPanel's LED light engine boasts a lifespan of more than 25,000 hours and can be easily serviced or recalibrated for long-term reliability. For those seeking a high return on investment, ARRI's uncompromising engineering standards make the SkyPanel family the superior choice.



[More...](#)

SKYPANEL X

Soft | Modular | Hard

Available in three size configurations (X21, X22, and X23), the modular SkyPanel X offers native soft and hard light technology, setting a new bar not only in terms of dimming and color science, but also in output and beam quality for medium to long throws. With up to 4,800 lux at 10 m / 32.8 ft and eight pixels per unit; dynamic CCT range of 1,500 K – 20,000 K; six-color full-spectrum color engine; wireless control; integrated power supply; advanced networking possibilities; and an IP66 rating, the SkyPanel X is an all-weather lighting solution tailored to modern workflows. In addition to the iconic blue and silver colors, the SkyPanel X is also available with an all-black housing, making it perfect for live entertainment applications.



- LED panel light with both soft and hard light technology with modular configurations
- IP66 all-weather professional lighting solution
- Excelling in color rendition, dimming, and beam quality
- Dynamic CCT range of 1,500 K - 20,000 K
- RGBACL full-spectrum color engine
- Up to 24 pixels (8 for X21, 16 for X22, 24 for X23)
- Integrated PSU and built-in wireless control





More...

SkyPanel X accessories

Reach beyond the Sky

There are three different front attachments available for SkyPanel X: the X21 Dome for native soft light, S60 Adapter for the re-use of all existing SkyPanel S60 accessories, and HyPer Optic for native hard light. Additionally, there is the possibility of mounting one (X21), two (X22), or three (X23) lampheads in one modular stirrup.



X21 Dome

The X21 Dome is a hot-swappable, rounded diffuser that can be quickly mounted and dismantled from the X21 lamphead's front and is included with every X21 luminaire. The X21 Dome is fully compatible with third-party accessories and modifiers.



S60 Adapter

The optional S60 Adapter serves as an exact counterpart to the front of the SkyPanel S60-C. Once mounted on the X21, it accommodates all S60 accessories. Consequently, established SkyPanel workflows remain unchanged, but are enhanced by the incorporation of the most recent lighting innovations.



HyPer Optic

The HyPer Optic is an optional hot-swappable lens with eight individually controllable zones that can be quickly mounted and dismantled from the X21 lamphead's front. The name refers to its high-performance light output for maximum intensity. This optic is an excellent tool for medium and long throws, either on a cherry picker, through windows, or bounced.



X Modular Yoke

The X Modular Yoke supports various size configurations of SkyPanel X, broadening possibilities and addressing the varied needs of a modern set. It offers three core configurations: X21 (a 2:1 unit), X22 (an expanded 2:2 surface), and X23 (a large 2:3 panel). With ARRI's quick-lock system, setting up your modular light is a breeze. Choose between a traditional yoke or spigots directly on the frames and configure your large fixture as an array in just two minutes, including wiring.



More...

A wide range of SkyPanel X applications Lighting solution tailored to your needs

Discover the X21's brilliance – brighter, faster setup, enhanced skin tones. Benefit from unprecedented color unity with the newly integrated ARRI ALEXA Modes, which seamlessly match ALEXA ALEV 3 and ALEV 4 sensors. For more power, explore modular lighting possibilities with the X22 and X23 for studios, outdoor sets, virtual production, and more. From studio rigging to daylight emulation through windows or a controllable backlight, experience the SkyPanel X firsthand.



Soft light applications

The X21 brings flicker-free dimming and can be placed close to talent, delivering lumen power that reaches further without losing beam perfection. Choose between tried-and-tested SkyPanel techniques with the S60 Adapter or embrace swift workflows with the hot-swappable X21 Dome. In addition, the open-face LEDs deliver unmatched output for large soft boxes. Unleash your creativity with texturized 8-pixel patterns designed for mixed-reality studios.



Hard light applications

SkyPanel X's native hard light offers a powerful, rounded beam with unparalleled punch and quality. Whether on cherry pickers, through windows, or bounced, the HyPer Optic excels in medium to long throws, in all weather conditions. In the modular X23 format, it surpasses 2.5 kW HMI lamps. This high-performance system pairs seamlessly with external diffusion such as silks or grid-cloths, enhancing color and diffusion and enabling a contrasting pixel look in which solid colors have great intensity and depth.



More...

SKYPANEL®

Soft Lighting | Redefined

The ARRI SkyPanel is an LED soft light. It features exceptional form, color, beam field, and output to provide maximum versatility. In order to accommodate different application areas, the classic SkyPanel series comes in a range of sizes: the small and portable S30, the mid-range S60, the long-aperture S120, and the super-large S360. The ARRI SkyPanel has the impressive ability to easily achieve precise color temperature and light settings. With a correlated color temperature range of 2,800 K to 10,000 K, the light offers excellent color rendition throughout the entire range. You can also adjust hue and saturation, gel selection, RGBW, source matching, and x, y coordinates for perfect soft lighting. Additionally, the classic SkyPanel offers 16 professional lighting effects for added convenience.



2021

Engineering Emmy®
SkyPanel Development



More...

The soft light for your creativity

Professional lighting accessories for SkyPanel

The SkyPanel was designed to be used primarily as a soft light to illuminate people, although features built into the fixture make it extremely versatile. The interchangeable diffuser panels on the front of the lamphead mean switching from Heavy Diffusion to Lite Diffusion can be done in a matter of seconds. A sizeable range of professional lighting accessories meets different application needs and user preferences. SkyBenders, Eggcrates, Snoots, FlexDoors, Honeycombs, Lightbanks, SNAPGRIDs, SNAPBAGs, Octagons, and Lanterns help shape the light, while mounting yokes and transport cases enable flexible usage on set and safe, easy transportation.



More...

Areas of application SkyPanel for different use cases

The classic ARRI SkyPanel series of LED soft lights offers a compact, bright and high-quality solution for the industry. With a design that focuses on form, color, and output, these fixtures are perfect for any production. The range of sizes and accessories make them suitable for film production, broadcast studios, virtual production studios, theaters, and live entertainment. Their versatility allows them to adapt to different applications with ease.



SkyPanel are perfect for:

- Cine-style application
- Broadcast / Studios
- Virtual Production
- Theater
- Photography





More...

Orbiter®

Illumination | Reshaped

The ARRI Orbiter is a versatile, tunable, and directional LED fixture. Orbiter's six-color light engine ARRI Spectra delivers a wide color gamut and outstanding color rendition across all color temperatures, along with industry-leading, smooth dimming from 100% to 0%. With its changeable optics, Orbiter can transform into many different types of lamphead, including Open Face, Beam, Fresnel, Projection, soft light, and many more. Orbiter's state-of-the-art technology and multi-functional design optimize it for today's needs as well as for emerging requirements, with endless possibilities for updates, enhancements, and new configurations.



QLM
Quick Lighting Mount

Available optics:

- Beam
- Projection
- Fresnel
- Open Face
- Docking Ring for third-party projection optics
- Glass Cover
- Domes
- Softboxes
- Bag-o-Light



More...

Your choice for different looks

Use and adapt Orbiter according to your needs

Changeable optics is the core innovation in Orbiter. With a wide variety of optics to choose from, Orbiter transforms into the perfect light for your application without sacrificing beam, output, or color quality. The Quick Lighting Mount (QLM) in Orbiter allows for optics with vastly different properties to be connected to the fixture.



More...

Orbiter®

Made for a large range of applications

Orbiter's output and versatility makes it the perfect directional lighting fixture for different applications – realizing your creative ideas. A wide range of optics and features allow the fixture to be used in a great variety of applications without compromising quality. Markets such as film and television production, broadcast, theater and live entertainment, and even photography are just some examples of environments where Orbiter excels. Needs are also rising in the virtual production industry. Orbiter is available in blue/silver and black color version for even more customization.



Orbiter, the perfect lighting fixture for:

- Motion Picture
- Broadcast & Media
- Theater & Live Entertainment
- Photography
- Virtual production





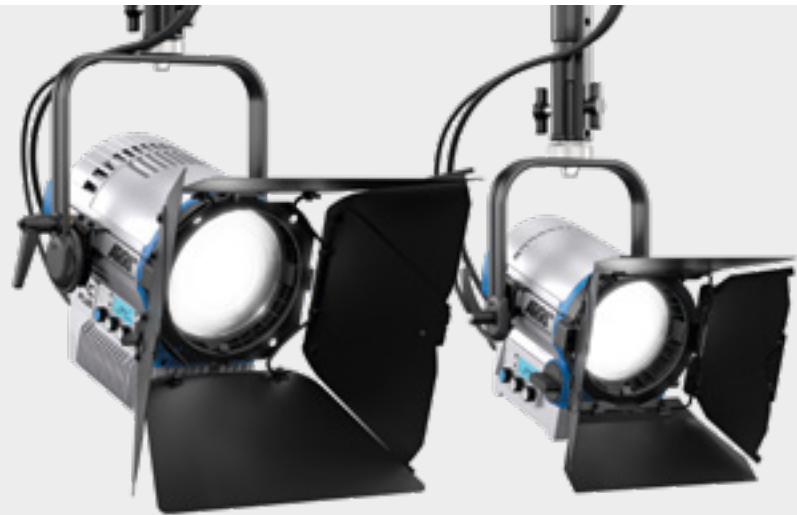
[More...](#)

L-SERIES[®] PLUS

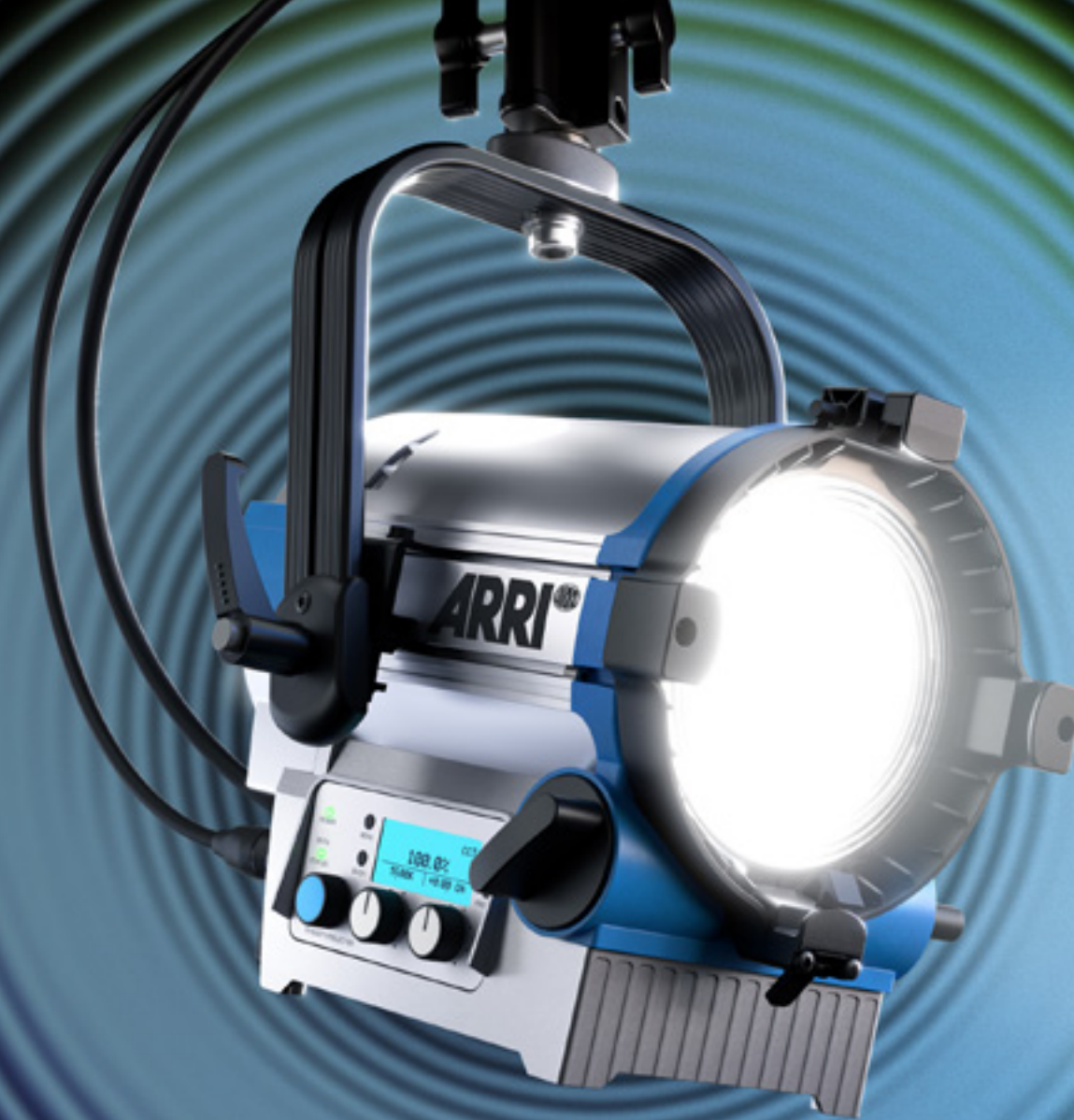
LED spotlights with true Fresnel performance

ARRI's L-Series Plus LED spotlights feature true Fresnel characteristics: continuous focusability from spot to flood; a uniform, homogeneous light field; and up to 90% more light output compared to their predecessors in an upgraded version. The L-Series Plus benefits from the latest, highly efficient LED technology and allows complete color and intensity control of the light.

Their build quality and flexibility make them suitable for a wide range of use cases, from continuous studio lighting and location work on movies and television to live entertainment, photography, theater, and corporate productions.



- Up to 90% brighter, yet similar size and weight to the original L-Series
- Direct network connectivity for LAN input and light control via ArtNet and Streaming ACN
- Continuous focusability from spot to flood
- Smooth, homogeneous light field
- Complete control over color and intensity
- Intuitive SkyPanel Classic onboard control and user interface
- Two variants: L5-C Plus and L7-C Plus in blue-silver and black with different yoke options



FW
4.5



Check out L-Series Plus
firmware and features

[More...](#)



LiOS - powerful software

Packed with amazing features

[More...](#)

LiOS (Lighting Operating System) is the software on which the latest ARRI LED lights, SkyPanel X and Orbiter, are operating on.* It amalgamates and expands on the innovative and groundbreaking features of the SkyPanel family and Orbiter, making these LED lighting fixtures one of the most fully featured luminaires on the market. LiOS3 works both on SkyPanel X and Orbiter, but with different characteristics.

*Only SkyPanel X and Orbiter operate on LiOS3. The rest of the SkyPanel family runs on Firmware FW 4.4.



- SkyPanel X runs with DMX Mode Spec. 6.0, is enabled for an array setup, supports the new ARRI ALEXA Modes, and LumenRadio CRMX2
- DMX User Presets for SkyPanel X and Orbiter
- Bluetooth 5.0 control
 - + for SkyPanel X without any further device in-between
 - + for Orbiter with a USB Bluetooth 5.0 adapter
- many different color modes
- the Orbiter has an integrated color sensor mode, which allows the fixture to measure ambient light and to recreate it through Orbiters' output



Photometrics

Tech specs of ARRI lights

[More...](#)

The ARRI Photometrics App gives you the ability to quickly reference the photometric characteristics, technical specifications, and more, of all ARRI light fixtures.

ARRI Photometrics App readouts and features:

- Luminous output
- Beam diameter
- Beam angle
- Flood, middle, and spot photometrics
- Luminous distribution graph
- Camera exposure and aperture
- Parameters including color temperature, CRI, protection rating, dimming, dimensions, weight, power draw, lamp holder type, mounting, reflector type, lens type, and scrim size
- Metric and imperial units
- Create projects and save preset fixtures
- Bulb selection
- Compare lampheads
- DMX implementation tables
- DMX conversion calculator
- CCL calculator
- Discontinued product data
- Electronic ballast information





More...

Stellar

The intelligent lighting control app from ARRI

Stellar provides a smart and innovative way to control professional lighting and is available on iOS and Android phones and tablets. Automatically taking care of complex DMX settings and featuring control interfaces with beautifully designed graphics, Stellar reimagines lighting control. Coded intelligence and advanced communication make connecting ARRI LED or third-party fixtures to the app simple and straightforward.



Stellar features:

- Control of ARRI (Classic SkyPanel, Orbiter, L-Series C) and third-party fixtures
- Manually add or swap out fixtures
- Group fixtures with different CCT ranges
- Share, sync, and back up your work
- Light plot fixture selection
- Auto layout and discovery of fixtures



ARRI LiCo features:

- Remote fixture control of SkyPanel X and Orbiter via Bluetooth
- No transmitting Bluetooth tool needed for SkyPanel X
- Modify settings such as DMX, RDM, or operational modes, just as you would on the control panel
- Operate color, dimming, and effects directly from your own smart device



More...

ARRI LiCo

A Bluetooth 5.0 lighting communication app

ARRI LiCo supports direct communication with your SkyPanel X and Orbiter lighting fixture—all done remotely via Bluetooth 5.0 from your mobile device. For SkyPanel X you don't need any further device in-between.¹ Adjust the lighting settings directly from your phone, just as you would on the control panel of the fixture. If you have previously created a X22 or X23 array, you will also be able to control it directly from your own smart device.² The app is available on iOS and Android phones and tablets.³

¹ Orbiter needs a USB Bluetooth 5.0 adapter.

² Only available for SkyPanel X.

³ Beta-Version for Orbiter



[More...](#)

Continuous lighting for photography and video

What you see is what you get

With deep roots in the film and TV market, ARRI understands that continuous light sources bring enormous benefits to creativity and efficiency on set—benefits that extend to the world of still life photography. The versatile features and accessories of ARRI LED fixtures, as well as the high-quality light output, offer almost unlimited creative possibilities, allowing photographers to explore as many looks and colors as they can imagine.



Advantages of continuous lighting:

- Bright, continuous light output
- Capture photos and short videos with the same setup
- See the setup as it will be on camera
- Ability to create in-camera effects
- Natural skin tones
- Countless color possibilities
- Perfect shadows
- Abundant selection of lighting accessories and modifiers
- Turn from soft light to hard shadows in seconds



[More...](#)

Cutting-edge environments that push productions further

Maximize efficiency & reduce risk with ARRI Solutions

By combining ARRI's unrivalled film heritage, expert consultancy, efficient design, and digital tools, ARRI Solutions takes care of technical production challenges. Custom-designed workflows and environments save time and money for studio owners, operators, and producers, enabling them to focus on lasting production excellence. With experience of delivering some of the world's most advanced studio facilities, our specialist team provides in-depth consultancy and support at every stage of a project.





The ultimate creative environment

Efficient and effective virtual production solutions

More...

ARRI is here to help customers embrace the full potential of virtual production, just as we were with the advent of digital camera systems and LED lighting. ARRI Solutions elevates virtual production through innovative and effective studio design, engineering, build, and operation. Dynamic camera and lighting systems are more interactive, workflows are more efficient, making budgets and resources go further.



Delivering precision and quality

ARRI's deep knowledge of camera and lighting integration in virtual production, metadata, and highest-quality color management forms the foundation for an intuitive set of virtual production tools. By streamlining on-set processes within LED production environments, stage operators, and creative teams get the best out of this technology, producing best-in-class results in virtual production environments of all sizes.

Custom-designed LED volumes

Create and build your own virtual production environment, with the promise of end-to-end ARRI quality. ARRI Solutions' expertise has contributed to pioneering facilities for customers all over the world.



Book an ARRI Stage

Our high-quality virtual production studios, including ARRI Stage London and ARRI Studio New York, deliver stunning results for film, television, and commercial projects. Our first-hand knowledge of effective studio operation enables ARRI Solutions to design spaces that not only meet a studio's technical requirements, but also enhance productivity and foster creativity.



More...

Next-generation production infrastructure

Integrated systems for broadcast and corporate studios

ARRI Solutions tailors tomorrow's production infrastructures for leading broadcasters, media outlets, brands, and corporate organizations across the globe. ARRI's heritage in industry-leading camera and lighting systems, rigging and power networks, moving lights expertise from Clay Paky, together with innovative IP-based workflows enable ARRI Solutions to specify the most effective, high-quality studio designs.

Education



Huddersfield University Stewart Film Studios

Entertainment



Europa Park Studio

Broadcast



WELT news studio, Berlin

Trusted to deliver

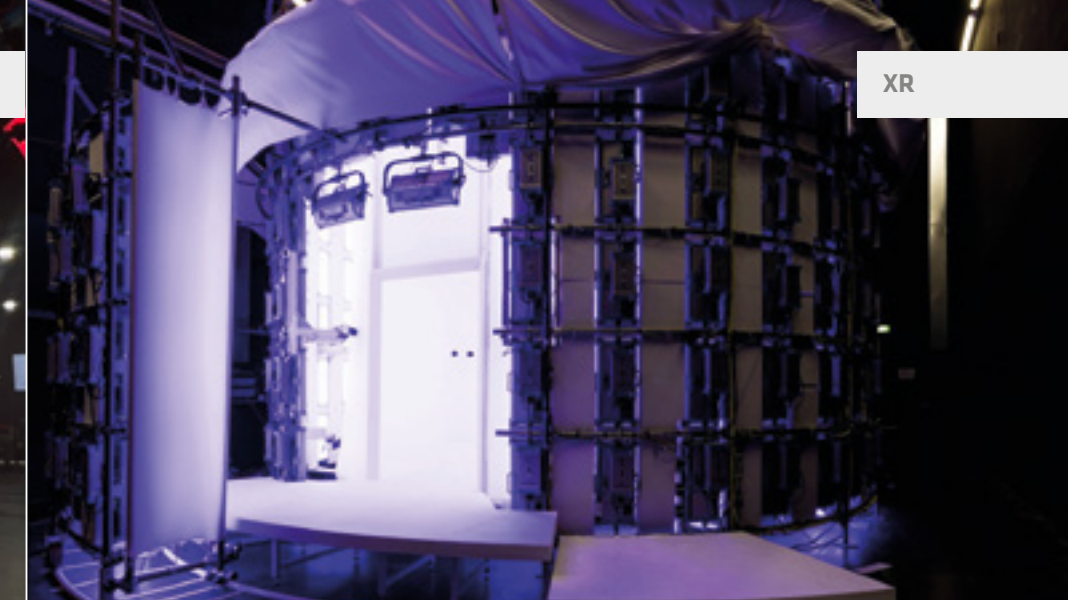
ARRI Solutions has delivered a multitude of high-quality infrastructure projects across a range of applications from broadcast, education, entertainment, and corporate. Clients are supported throughout the project, with in-depth consultancy, comprehensive project planning and commissioning, through to training and after-sales support.

Corporate



SP Studios, Canada

XR



Volucap Max Studio, Berlin



More...

Bridging the physical and digital worlds Enabling customers for the age of digitized production

Globalized and virtualized production, tight budgets and timelines contribute to complexity in today's production environments. We develop custom solutions based on your production's needs, analyze your workflows and pipelines, and optimize them, to achieve significant benefits for all types of film production. ARRI Solutions' digital toolkit streamlines and standardizes the entire production pipeline from previz planning through to post. Complex setups are simplified with powerful, real-time set management tools, effective workflow design, and integrated infrastructure planning.



Retain creative control with our digital toolkit

We make studio environments as cohesive and flexible as possible, ensuring high levels of creativity and communication on all types of film and production sets.

Metadata Management Tools

Harvesting, management, and distribution of metadata for simple, seamless operations and faster turnaround in post-production.

Digital Twins

Virtual ARRI fixtures and camera models enable precise pre-viz simulation for camera and lighting, which can be reproduced accurately on-set and in post.

Networked Sets

Real-time device monitoring and process automation reduce set-up time, de-risk physical production, and ensure precise, reproducible results in every take.



ARRI LightNet

Seamless workflow integration for broadcast lighting systems

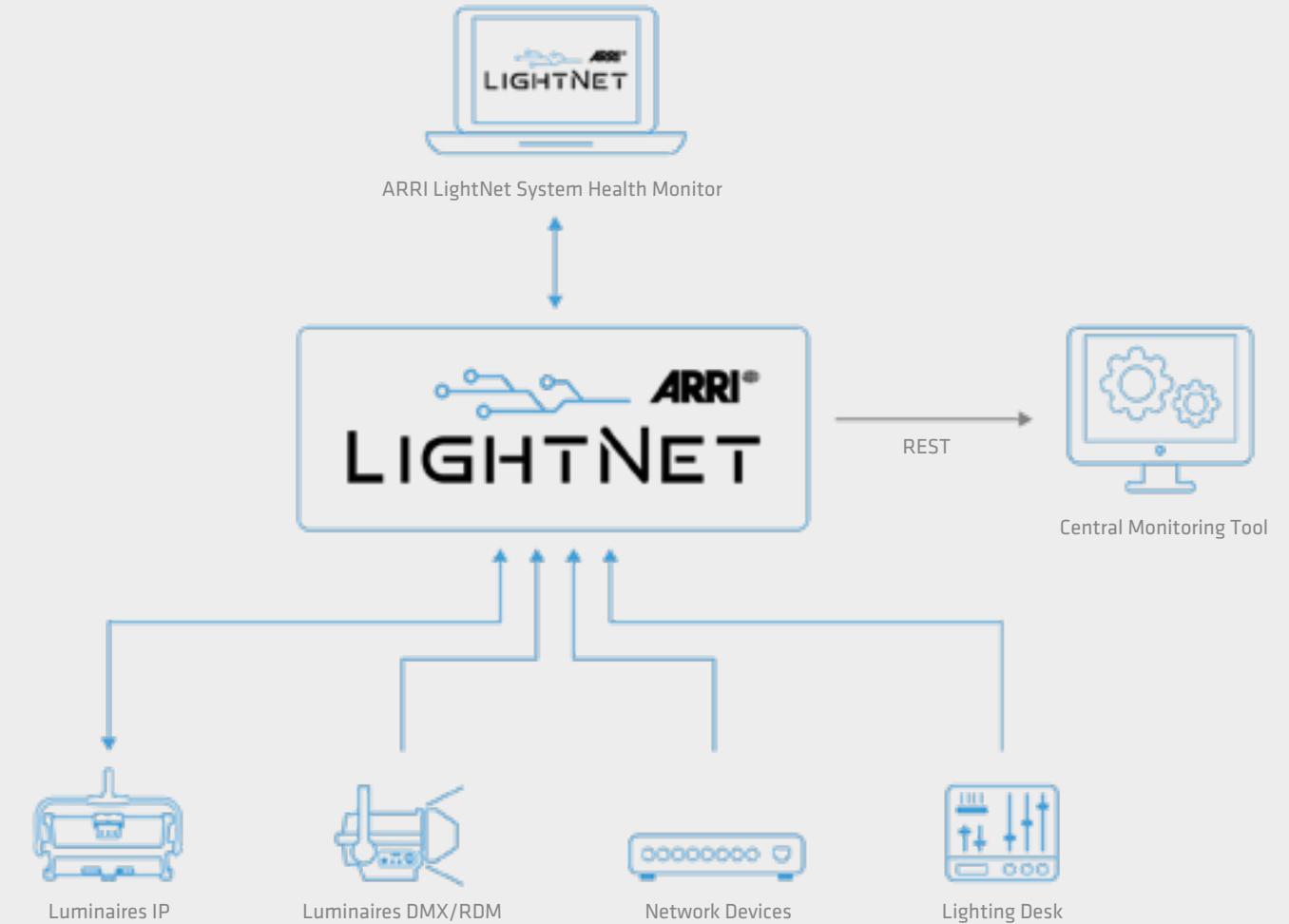
[More...](#)

ARRI LightNet offers smart, logical, and at-a-glance centralized monitoring, fault-finding, and management of broadcast studio lighting networks from anywhere. ARRI LightNet is compatible with the hardware of multiple manufacturers and established lighting protocols, so it can be retrofitted into existing facilities and lighting ecosystems as easily as it can be specified for new builds.



Why choose ARRI LightNet?

- Holistic device monitoring for lighting networks (cross-manufacturer, cross-device)
- Clear and logical status information overview via dedicated front-end interface or a broadcast facility's central monitoring system
- Central/decentral system architecture ensures full flexibility with resource-saving front end and high-performance back end



This trailblazing product observes and displays all elements across a broadcast studio lighting network—luminaires, consoles, network switches, splitters, nodes, etc.—showing all the relevant data in real time on a single interface. The software thereby allows users and technicians to work harmoniously in parallel while accessing and managing different aspects of the network.



ARRI Approved Certified Pre-Owned program

The first choice for second-hand

[More...](#)

Working with ARRI's multi-award-winning products is the desire of many filmmakers, photographers, and broadcasters. The ARRI Approved Certified Pre-Owned (CPO) program provides a more cost-effective and yet trustworthy way to fulfill that desire, and for less than you might think. All the products we offer in this program will help you capture beautiful, top-class images, with the reliability and support you expect from ARRI.



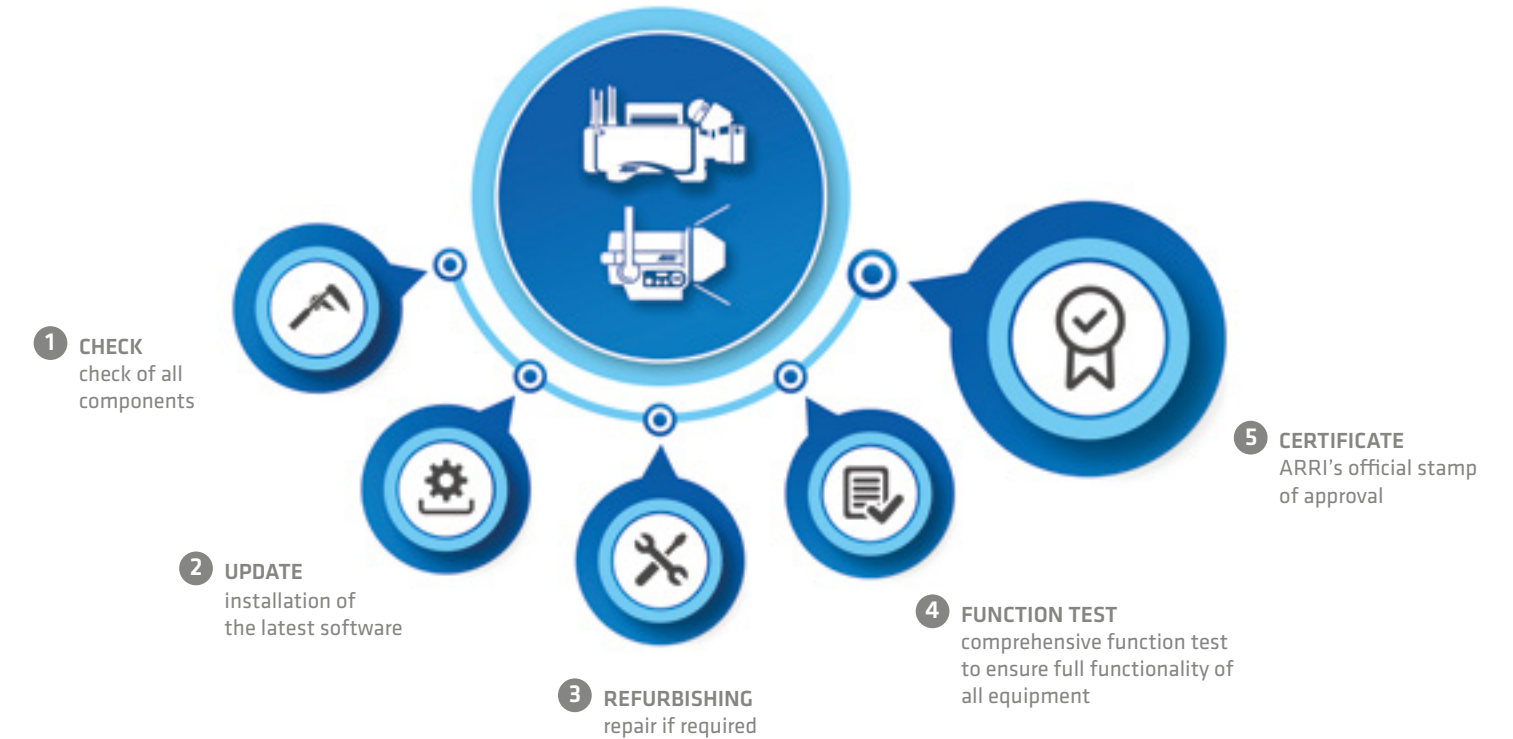
Our wide range of CPO products includes:

- Cameras
- Lenses
- Lighting fixtures
- Camera Stabilizer Systems
- Pro Camera Accessories
- Archive Solutions

ARRI approved quality

All CPO products undergo a thorough check and overhaul

The CPO program makes the world's most advanced image-making tools more affordable, allowing you to invest in selected pre-owned ARRI cameras and lighting fixtures with full confidence that you are not sacrificing performance for price. Every product undergoes a comprehensive check and overhaul of all components at an ARRI Service Center.



Online support for your shoot and post workflow

Free tools, tips, apps, and learning resources

ARRI's many years of experience producing the widest range of professional filmmaking tools available from any manufacturer, its direct contact with producers and creatives, and its knowledge of postproduction, all give the company a unique insight into every stage of the production chain. This, combined with ARRI's system approach, enables it to develop functional and educational resources that help filmmakers get the most out of their technology. A range of free-of-charge tools, apps, and tutorials can be found in the Learn & Help section of ARRI's website.



ARRI Look Library

Paint images as you envision them: ARRI's free Look Library offers 87 styles that help shape your vision. Use them as-is or as a starting point for your own creations. Looks from the library are available for LogC3 and LogC4 images as a 3D LUT; ARRI Look File 2 (for ALEXA Mini, AMIRA, ALEXA SXT, ALEXA LF or Mini LF); or ARRI Look File 4 (for ALEXA 35).

[More...](#)



ARRI YouTube Channel

Interactive webinars, filmmaker interviews, and more

[More...](#)

To help keep you inspired, ARRI populates its YouTube channel with a wide range of educational, behind-the-scenes, and creative video content. Whether it's a tech talk on a specific product, an interview with a cinematographer about an upcoming movie, or a bulletin from an event we're attending, our playlists will keep you up to date on the latest news and equipment.



Interactive webinars

The ARRI TECH TALK Live series covers a broad spectrum of different topics, including technical deep dives, equipment tutorials, and discussions with industry professionals, all with the option of getting your questions answered live on air. The playlist is an ever-growing library of previous talks.



Discover the webinars

[More...](#)



Filmmaker interviews

ARRI's working relationships with filmmakers can span their entire careers. Often, they are kind enough to sit down with us and discuss their latest project, their creative approach, or their experiences with our equipment. The playlist is crammed with tips and insights from top DPs.



Discover the interviews

[More...](#)



Other playlists

The ARRI Channel hosts a rich and diverse selection of other video content: showreels, demo shoots, historical pieces, tech tips, hardware and software guides, and behind-the-scenes material, to name a few. Time spent exploring our playlists is time spent developing your knowledge and skills.



Discover all playlists

[More...](#)



ARRI Academy

Strengthen your knowledge

Certified training courses, bespoke one-on-one tuition, masterclasses, and close-up events

Offering a wide range of multi-day training courses, individual sessions, and educational events in different countries and languages worldwide, ARRI Academy is the best route for users of all abilities to gain hands-on knowledge of ARRI products and workflows, and build their on-set confidence.



Certified User Training

Learn everything from on-set techniques to postproduction workflows. Taught by ARRI-trained industry professionals, these online and in-person courses provide unrivalled insight into the full possibilities of working with ARRI camera systems, lenses, lights, and accessories.



[More...](#)



Advanced Service Training

ARRI Service provides online training for professional camera and lighting technicians, owner-operators, and distributors—with or without technical experience. The training courses are designed to transfer detailed knowledge about the service and maintenance of all different types of ARRI products.



[More...](#)



Preregistration

You can preregister for one or more of ARRI's Certified User and Service Training courses. Let us know how and where we can help; specify your products, time frame, and preferred locations. You can register today without any obligation and, depending on the regional demand, we will schedule a training near you.



[More...](#)



ARRI Certified Film School Accreditation Program

ARRI Academy now offers an educational program for film schools, providing benefits for both the school and its students. Program members receive exclusive access to educational material on ARRI products and workflows. Film schools become officially certified by ARRI and can issue certificates to their individual students.



[More...](#)

ARRI Service

Worldwide technical support for ARRI products



Service requests

Start online and contact our technical service. The ARRI service team is here to help.

[More...](#)



Service locations

The ARRI service center network provides a great selection of nearby locations for ARRI certified repairs. Find your nearest service center for ARRI products here.

[More...](#)



Lens service

ARRI has exclusive-level lens service available in Burbank, Munich, Beijing, and Hong Kong. All service centers provide rapid response and cutting-edge support for film and television production hotspots around the world.

[More...](#)



Advanced service training

Service training is also available for many products.

[More...](#)



Service parts

The online service parts catalogue is our searchable database for identifying and ordering spare parts required for the maintenance and repair of ARRI Camera System products.

[More...](#)



Built to last

Extra peace of mind with extended warranties

ARRI products are renowned for their rugged durability, but rough and demanding conditions on set can necessitate maintenance from time to time. Extended warranty packages offer a fixed cost of ownership, minimized downtime, and a level of service that goes beyond the standard.



Register now [More...](#)

Purchase a one year extended warranty along with your camera, or later through any official ARRI point of sale – subsidiaries, distributors, or resellers*.

Register your AMIRA, ALEXA Mini, ALEXA, ALEXA LF or ALEXA Mini LF** within one month of purchase and get a free six months extended warranty.

Register your ALEXA 35 within one month of purchase and get a free 12 months extended warranty.

ARRI offers a three-year extended warranty for its LED fixtures, which is included in the purchase price without any extra costs or further application process. LED accessories are not included.

*Due to a change in the European Union's legal regulations, extended warranties will no longer be offered against payment as of January 1, 2023 from ARRI Munich or any other subsidiaries, distributors, or resellers located in the EU.

**free 12 months extended warranty for ALEXA Mini LF.

This Product Highlights and Solutions brochure (80.0050726) is published by Arnold & Richter Cine Technik, April 2024 © ARRI/2024
Technical data and offerings are subject to change without notice. All rights reserved. Without any warranty. Not binding 04/2024. ARRI, the ARRI logo, ALEXA Mini, ALEXA LF, ALEXA Mini LF, ALEXA SXT W, AMIRA, Signature Prime, Signature Zoom, TRINITY, LIOS, L-Series, Orbiter, Quick Lighting Mount, QLM, SkyPanel, SKYPANEL, SkyPanel X, and Stellar as well as the blue/silver color combination are registered trademarks of Arnold & Richter Cine Technik GmbH & Co. Betriebs KG



www.arri.com