

## TRINITY Rig - Pro Sets

For all products and sets please contact your local dealer



### TRINITY Rig 1.74 in, Volt, Pro Set, Gold Mount KK.0038234

- includes:
- TRINITY Rig, 1.74in, Volt K2.0038104
  - Transvideo StarliteHD5-ARRI OLED Monitor K2.0006960
  - TRINITY Joystick Monitor Mount K2.0010287
  - TRINITY Battery Mount, Gold Mount (3x) K2.0010288
  - TRINITY PWR, Lemo 1B 4pin to 1B 4pin K2.0010290
  - TRINITY PWR, Lemo 1S 3pin to 1B 4pin K2.0010291
  - TRINITY Power Cable, D-Tab to 1S 3pin K2.0010296
  - artemis Docking Bracket, 1.8in K2.0010319
  - Post Tool for artemis and TRINITY K2.0010461
  - Hex Key 1.5mm K2.0010437
  - Hex Key 2mm K2.0010436
  - Cam Power, Cine, 12V, XLR, HiCap K2.0010470
  - Cam Power, Cine, 12V, HiCap, ALEXA K2.0010538
  - Cam Power, Cine, 12V, HiCap, ALEXA Mini K2.0010540
  - HD SDI BNC Cable K2.0010476
  - Volt Pwr Cable 0B 3p - 0S 4p 0.3m/0.9ft K2.0037459
  - Volt Pwr Cable 0B 3p - 0B 2p, 0.3m/0.9ft K2.0037460
  - SSB-3, Stabilizer System Bracket for TRINITY, MAXIMA, K2.0037912
  - SAM plates

### TRINITY Rig 1.74 in, Volt, Pro Set, V-Mount KK.0038235

- includes:
- TRINITY Rig, 1.74in, Volt K2.0038104
  - Transvideo StarliteHD5-ARRI OLED Monitor K2.0006960
  - TRINITY Joystick Monitor Mount K2.0010287
  - TRINITY Battery Mount, V-Mount (3x) K2.0010289
  - TRINITY PWR, Lemo 1B 4pin to 1B 4pin K2.0010290
  - TRINITY PWR, Lemo 1S 3pin to 1B 4pin K2.0010291
  - TRINITY Power Cable, D-Tab to 1S 3pin K2.0010296
  - artemis Docking Bracket, 1.8in K2.0010319
  - Post Tool for artemis and TRINITY K2.0010461
  - Hex Key 1.5mm K2.0010437
  - Hex Key 2mm K2.0010436
  - Cam Power, Cine, 12V, XLR, HiCap K2.0010470
  - Cam Power, Cine, 12V, HiCap, ALEXA K2.0010538
  - Cam Power, Cine, 12V, HiCap, ALEXA Mini K2.0010540
  - HD SDI BNC Cable K2.0010476
  - Volt Pwr Cable 0B 3p - 0S 4p 0.3m/0.9ft K2.0037459
  - Volt Pwr Cable 0B 3p - 0B 2p, 0.3m/0.9ft K2.0037460
  - SSB-3, Stabilizer System Bracket for TRINITY, MAXIMA, K2.0037912
  - SAM plates

Note:  
The customer has to take care of the installation and commissioning of the Volt™ gimbal. This is done at your own risk.

## artemis Arm Sets and Vest



### artemis Spring Arm Carbon 19 Kg Pro Set KK.0020296

- Consists of:
- artemis Spring Arm Carbon / 19 kg K2.0010330
  - 6 mm Hex Key 1/4" K2.0010435
  - 4 mm Hex Key / 5/32" K2.0010434
  - Arm Soft Bag K2.0010463

### artemis Spring Arm Carbon 23 Kg Pro Set KK.0020297

- Consists of:
- artemis Spring Arm Carbon / 23 kg K2.0010331
  - 6 mm Hex Key 1/4" K2.0010435
  - 4 mm Hex Key / 5/32" K2.0010434
  - Arm Soft Bag K2.0010463

### artemis Spring Arm Carbon 26 kg Pro Set KK.0020298

- Consists of:
- artemis Spring Arm Carbon / 26 kg K2.0010332
  - 6 mm Hex Key 1/4" K2.0010435
  - 4 mm Hex Key / 5/32" K2.0010434
  - Arm Soft Bag K2.0010463

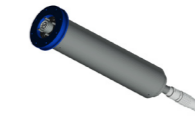
### artemis Carbon Spring Arm, 30kg/66.1lb, Pro Set K0.0037441

- Consists of:
- artemis Carbon Spring Arm, 30kg/66.1lb K2.0037435
  - 6 mm Hex Key 1/4" K2.0010435
  - 4 mm Hex Key / 5/32" K2.0010434
  - Arm Soft Bag K2.0010463



artemis Vest, K2.0010333

## Accessories



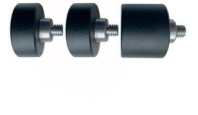
Post Extension 8.5" / ø 1.8" K2.0014264



Knurled Handle Extension 1.8" K2.0014280



Counterweight Ring, Donut, 800 gr, K2.0031236



Counterweight Set, 150 gr, 300 gr KK.0033710

## TRINITY Camera Plates



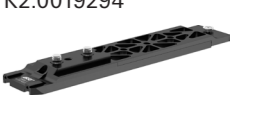
Short QL Plate Gen2 for SRH-3, TRINITY, MAXIMA K2.0019295



Long QL Plate Gen2 for SRH-3, TRINITY, MAXIMA K2.0019294



Extra long QL Plate Gen 2 for SRH-3, TRINITY, MAXIMA, K2.0033425



SAM-1 Stabilizer Adapter Mount for ALEXA K2.0018851



SAM-2 Stabilizer Adapter Mount for ALEXA Mini K2.0014215



SAM-3 Stabilizer Adapter Mount for AMIRA K2.0014630



Stabilizer Adapter Mount SAM-4, K2.0033662



SSB-1, Stabilizer System Bracket, K2.0035956

## Protection & C-Stand



Case for TRINITY & artemis rigs, K2.0016274



Case for the TRINITY head, K2.0016275



Rain Cover Sled K2.0010466



Rain Cover Arm K2.0010465



C-Stand Turtle Base, K2.0010433

## artemis Spring Arm Upgrade



artemis spring arms can be upgraded for more payload.

- Spring Set for Spring Arm, 23kg/ 50.7lb, K2.0010501
- Spring Set for Spring Arm, 26kg/ 57.3lb, K2.0010502
- Spring Set for Spring Arm, 30kg/ 66lb, K2.0037438

## Modules



Sled CINE BROADCAST / V-Mount, K2.0015658



Sled CINE BROADCAST / Gold Mount, K2.0015659



Top Stage Cine Broadcast K2.0012159