

ALEXA and ALEXA Plus



CONFIGURATION OVERVIEW – 1.2.0 / 2015.03

© 2010 Arnold & Richter Cine Technik GmbH & Co. Betriebs KG. All rights reserved. This material is provided "as is" for information purposes only without any warranty. ARRI assumes no responsibility with regard to the performance or use of the products or typographical errors or inaccuracies of given information. Product specifications are subject to change without notice. For a full listing of all available components consult the price list.

ALEXA & ALEXA Plus Sets



ALEXA Basic Camera Set: K0.71000.D

- Includes:
- K1.71000.0 - ALEXA camera body, tool set and manual
 - K2.72046.0 - SxS Module
 - K2.72034.0 - ProRes Codec Option
 - K2.72035.0 - QuickTime File Format Option
 - K2.72018.0 - SD Card
 - K2.72008.0 - Electronic Viewfinder EVF-1
 - K2.74001.0 - Viewfinder Mounting Bracket VMB-3
 - K2.72012.0 - Viewfinder Cable Short (0.35m/1.2ft) KC 150-S
 - K2.72007.0 - Center Camera Handle (CCH-1)
 - K2.72002.0 - Wedge Adapter (WA-1)

Note: SxS PRO cards, on-board battery adapters and software license keys are not included and can be ordered separately



ALEXA Plus Basic Camera Set: K0.71100.D

- Includes:
- K1.71100.0 - ALEXA Plus camera body, tool set and manual
 - K2.72046.0 - SxS Module
 - K2.72034.0 - ProRes Codec Option
 - K2.72035.0 - QuickTime File Format Option
 - K2.72018.0 - SD Card
 - K2.72008.0 - Electronic Viewfinder EVF-1
 - K2.74001.0 - Viewfinder Mounting Bracket VMB-3
 - K2.72012.0 - Viewfinder Cable Short (0.35m/1.2ft) KC 150-S
 - K2.72007.0 - Center Camera Handle (CCH-1)
 - K2.72002.0 - Wedge Adapter (WA-1)

Note: SxS PRO cards, on-board battery adapters and software license keys are not included and can be ordered separately

ALEXA Pro Camera Set: KB.71510.D

- Includes:
- K0.71000.D - ALEXA Basic Camera Set
 - K0.71011.0 - SxS PRO Card Set 5x 64 GB
 - K2.72021.0 - ALEXA Ethernet/RJ-45 Cable (3.00m/9.8ft) KC 153-S
 - K2.72031.0 - ALEXA 12V Accessory Cable KC 154-SP-S
 - K2.72015.0 - Handle Extension Block (HEB-2)
 - K2.72083.0 - Shoulder Pad (SP-4)
 - K2.74000.0 - Viewfinder Extension Bracket VEB-3
 - K2.72013.0 - Viewfinder Cable Medium (0.65m/2.1ft) KC 151-S
 - K2.66172.0 - Bridge Plate Adapter (BPA-2)
 - K2.72017.0 - Leveling Block (LB-1)

Note: an on-board battery adapter is not included and can be ordered separately.

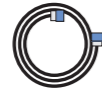
ALEXA Plus Pro Camera Set: KB.71610.D

- Includes:
- K0.71100.D - ALEXA Plus Basic Camera Set
 - K0.71011.0 - SxS PRO Card Set 5x 64 GB
 - K2.72021.0 - ALEXA Ethernet/RJ-45 Cable (3.00m/9.8ft) KC 153-S
 - K2.72031.0 - ALEXA 12V Accessory Cable KC 154-SP-S
 - K2.72015.0 - Handle Extension Block (HEB-2)
 - K2.72083.0 - Shoulder Pad (SP-4)
 - K2.74000.0 - Viewfinder Extension Bracket VEB-3
 - K2.72013.0 - Viewfinder Cable Medium (0.65m/2.1ft) KC 151-S
 - K2.66172.0 - Bridge Plate Adapter (BPA-2)
 - K2.72017.0 - Leveling Block (LB-1)

Note: an on-board battery adapter is not included and can be ordered separately.

For more details and sets please see price list

Cables



ALEXA 3D Cable Set, K0.71032.0

One ALEXA EXT to EXT Cable for sensor and HD outputs sync and one ALEXA Ethernet to Ethernet Cable for camera settings sync (Set incl. KC155-S, K2.72032.0 and KC156-S, K2.72033.0)

UMC Connection Cable K-UMC3-ALEXA, K2.65239.0

ALEXA 12V Accessory Cable KC 154-SP-S, K2.72031.0 (coiled)

ALEXA Ethernet Cable 3m KC 153-S, K2.72021.0

ALEXA EXT - EXT Cable 2m KC 155-S, K2.72032.0

ALEXA Ethernet-Ethernet Cable 2M KC 156-S, K2.72033.0

ALEXA Ethernet Remote Cable (1m/3.3ft) KC 158-S, K2.72041.0

ALEXA Ethernet Remote Cable (2m/6.6ft) KC 157-S, K2.72040.0

ALEXA Ethernet Extension Cable (15m/50ft) for RCU-4

KC 159-S, K2.72043.0 (up to three KC-159-S for total length of 47m/154ft with K2.72040.0 or 46m/151ft with K2.72041.0)

Power Supply & Battery Adapter

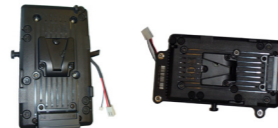


Power Cable

KC-20 K2.41966.0,
KC-29 K2.44693.0 (coiled)

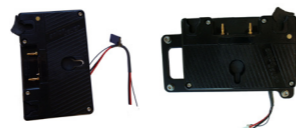


26V power supply NG 12/26 R
K2.47351.0



Battery Adapter Back for
V Mount, BAB-V K2.72010.0

Battery Adapter Top for
V Mount, BAT-V K2.72011.0



Battery Adapter Back for
Gold Mount, BAB-G K2.72003.0

Battery Adapter Top for
Gold Mount, BAT-G K2.72006.0

Viewfinder System



Electronic Viewfinder
EVF-1, K2.72008.0



Viewfinder Extension Bracket
VEB-3, K2.74000.0



Heated Eycup, HE-7 K2.0003898



Viewfinder Mounting
Bracket, VMB-3 K2.74001.0

XR Module Upgrade



XR Module Upgrade Set K4.72574.0

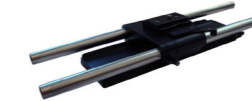
Support, Handles & Elec. Accessories



Remote Control Unit
RCU-4, K2.72036.0
(incl. ALEXA Ethernet
Remote Cable (2m/6.6ft)
KC 157-S K2.72040.0)



ALEXA Rain Protector
ARP-1, K2.72026.0



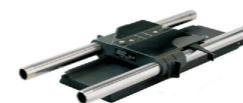
Bridge Plate, BP-12 Set
(incl. base plate & rods)
for 19 mm, K0.71031.0
Bridge Plate, BP-13 Set
(incl. base plate & rods)
for 15 mm, K0.60165.0



Bridge Plate Adapter
BPA-2
(for BP-3, 5, 8 or 9)
K2.66172.0



Universal Adapter
Plate UAP-1
K2.72102.0



Bridge Plate BP-8
K2.47090.0



Wedge Adapter, WA-1
(for Quick Release HD-
Baseplate) K2.72002.0
(spare)



Quick Release
HD Baseplate
K2.47796.0



Shoulder Pad
SP-4
K2.72083.0



Low Mode Support
Set, LMS-3
K2.72023.0



Centre Camera Handle
CCH-1, K2.72007.0
(spare)



Side Camera Handle,
SCH-1 K2.72016.0



Adjustable Center Grip
tall, ACG-2, K2.72022.0



Codex/ALEXA
Onboard S Bracket
Set, K0.60188.0



Handle Extension
Block HEB-1
(without tape hook)
K2.0001016



Handle Extension
Block HEB-2
(with tape hock)
K2.72015.0



ALEXA
Handgrip Set
K0.71033.0



Camera Handgrip
Right, K2.45886.0



Extension for
Handgrip
K2.47136.0



Leveling Block
LB-1, K2.72017.0



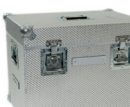
Rod Mounting
Bracket RMB- 2
K0.60209.0



Ultrasonic Distance Measure
UDM-1 Set K0.60055.0
Cable UDM-ALEXA K2.65261.0



Ext Distribution
Box EDB-1
K2.72038.0



Case for ALEXA
K2.72030.0