

Controlled Lens Motors & Lens Data Encoder



CONFIGURATION OVERVIEW – 0.3.0 / 2018.11

© 2010 Arnold & Richter Cine Technik GmbH & Co. Betriebs KG. All rights reserved. This material is provided "as is" for information purposes only without any warranty. ARRI assumes no responsibility with regard to the performance or use of the products or typographical errors or inaccuracies of given information. Product specifications are subject to change without notice. For a full listing of all available components consult the price list.

CLM-5 & Accessories



CLM-5 (Basic Set)
K2.0006361



CLM-5 Motor Unit
K2.0006360



CLM-5/cforce mini Clamp Console 19/15mm,
K2.0006176



CLM-5/cforce mini Gear m0.8/32p, 40t,
K2.0003753

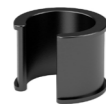


CLM-5 Motor Cable,
K2.0006332

CLM-5 / cforce mini Accessories



CLM-5/cforce mini Clamp Console 19/15mm,
K2.0006176



CLM-5/cforce mini Clamp Insert 19/15mm (incl. in K2.0006176)
K2.0006175



- CLM-5/cforce mini Gear m0.8/32p, 40t, K2.0003753
- CLM-5/cforce mini Gear m0.8, 40t, 25 mm, K2.0006372
- CLM-5/cforce mini Gear m0.4/64p, 80t, K2.0006367
- CLM-5/cforce mini Gear m0.5, 64t, K2.0006365
- CLM-5/cforce mini Gear m0.6, 56t, K2.0006363
- CLM-5/cforce mini Gear 48p, 60t, K2.0006370

CLM-4 & Accessories



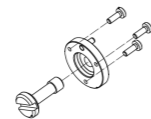
Controlled Lens Motor CLM-4 (Set)
K0.60185.0



Standard Clamp Console for CLM-3
K2.65140.0



19 mm to 15 mm insert for CLM-4,
K2.0002080



Gear Flange for CLM-4
K2.0000244

CLM-4 Gear assembly with modul 0.8/32 pitch, 50 teeth (incl. metal gear Flange),
K2.72108.0

CLM-4 Gear assembly with modul 0.8/32 pitch, 50 teeth, 25mm extra wide
K2.72112.0



CLM-4 Motor Unit
K2.72114.0



Cable for CLM-4 Motor,
K2.72099.0



CLM-4 Gear Set 0.8, 0.6, 0.5, 0.4,
K2.72116.0 (incl. one metal core)



Standard Clamp Console for CLM-4
K2.72101.0



Clamp Console-2 for CLM-3
K2.65141.0



CLM-4 Clamp Insert 5/8"
K2.72115.0

CLM-4 / cforce plus Accessories



CLM-4 Rod-to-Rod Adapter 15mm,
K2.72106.0



CLM-4 Rod-to-Rod Bridge Adapter 15mm,
K2.72107.0



CLM-4 Rosette Adapter for Hill Bracket,
K2.72113.0



Gear Screw for CLM-4
K2.72127.0

CLM-4 Gear assembly with modul 0.6, 70 teeth,
K2.72111.0

CLM-4 Gear assembly with 48 pitch, 75 teeth,
K2.0002044

CLM-4 Gear assembly with module 0.5, 80 teeth,
K2.72110.0

CLM-4 Gear assembly with module 0.4/64 pitch, 100 teeth,
K2.72109.0

CLM-3 & Accessories



Controlled Lens Motor CLM-3 (Set)
K0.60057.0



Clamp Console-2 for CLM-3
K2.65141.0



CLM-3 gear module 0.8/32 pitch, 60 teeth,
K2.65142.0

CLM-3 gear module, 0.8/32 pitch, 60 teeth, 25mm extra-wide,
K2.0001256

CLM-3 gear module 0.6, 84 teeth,
K2.0001918

CLM-3 gear module with 48 pitch, 90 teeth,
K2.0002055

CLM-3 gear module 0.5, 96 teeth,
K2.0001914

CLM-3 gear module 0.4/64 pitch, 120 teeth,
K2.00001911



CLM-3 Motor Unit
K2.65143.0



Cable for CLM-3 Motor,
K2.65145.0



Gear for Cine Lenses Module 0.8, 60 teeth for CLM-3,
K2.65142.0



Standard Clamp Console for CLM-3
K2.65140.0



19 mm to 15 mm inserts for CLM-3 (pair),
K2.0002077

LDE-1 Lens Data Encoder



Lens Data Encoder LDE-1,
K2.0002680



LDE-1 Cable
K2.0003040



LDE-1 Gear m0.8/32p, 60t,
K2.0003036 For standard cine lenses focus/iris/zoom, Panavision focus only.

LDE-1 Gear m0.4/64p, 120t,
K2.0003050 For Panavision iris, Fujinon ENG iris, Canon ENG iris.

LDE-1 Gear 48p, 90t,
K2.0003050 For Panavision zoom.

Lens Type	Focus Gear	Iris Gear	Zoom Gear
CINE	Module 0.8 / 32 pitch	Module 0.8 / 32 pitch	Module 0.8 / 32 pitch
Panavision	Module 0.8 / 32 pitch	Module 0.4 / 64 pitch	48 pitch (no common pitch equivalent)
Fujifilm B4 ENG	Module 0.6 (no common pitch equivalent)	Module 0.4 / 64 pitch	Module 0.6 (no common pitch equivalent)
Canon B4 ENG	Module 0.5 (no common pitch equivalent)	Module 0.4 / 64 pitch	Module 0.5 (no common pitch equivalent)