

CLM-5 & Accessories



CLM-5 (Basic Set) [K2.0006361](#)



CLM-5 Motor Unit [K2.0006360](#)



CLM-5/cforce mini Clamp Console 19/15mm, [K2.0006176](#)



CLM-5/cforce mini Gear m0.8/32p, 40t, [K2.0003753](#)



CLM-5 Motor Cable, [K2.0006332](#)

CLM-5 / cforce mini Accessories



CLM-5/cforce mini Clamp Console 19/15mm, [K2.0006176](#)



CLM-5/cforce mini Clamp Insert 19/15mm (incl. in [K2.0006176](#)) [K2.0006175](#)



CLM-5/cforce mini Gear m0.8/32p, 40t, [K2.0003753](#)
 CLM-5/cforce mini Gear m0.8, 40t, 25 mm, [K2.0006372](#)
 CLM-5/cforce mini Gear m0.4/64p, 80t, [K2.0006367](#)
 CLM-5/cforce mini Gear m0.5, 64t, [K2.0006365](#)
 CLM-5/cforce mini Gear m0.6, 56t, [K2.0006363](#)
 CLM-5/cforce mini Gear 48p, 60t, [K2.0006370](#)

CLM-4 & Accessories



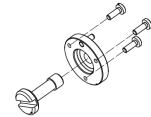
Controlled Lens Motor CLM-4 (Set) [K0.60185.0](#)



Standard Clamp Console for CLM-3 [K2.65140.0](#)



19 mm to 15 mm insert for CLM-4, [K2.0002080](#)



Gear Flange for CLM-4 [K2.0000244](#)

CLM-4 Gear assembly with modul 0.8/32 pitch, 50 teeth (incl. metal gear Flange), [K2.72108.0](#)

CLM-4 Gear assembly with modul 0.8/32 pitch, 50 teeth, 25mm extra wide [K2.72112.0](#)



CLM-4 Motor Unit [K2.72114.0](#)



Cable for CLM-4 Motor, [K2.72099.0](#)



CLM-4 Gear Set 0.8, 0.6, 0.5, 0.4, [K2.72116.0](#) (incl. one metal core)



Standard Clamp Console for CLM-4 [K2.72101.0](#)



Clamp Console-2 for CLM-3 [K2.65141.0](#)



CLM-4 Clamp Insert 5/8" [K2.72115.0](#)

CLM-4 / cforce plus Accessories



cforce plus Rod-to-Rod Adapter 15mm, [K2.72106.0](#)



cforce plus Rod-to-Rod Bridge 15mm, [K2.72107.0](#)



CLM-4 Rosette Adapter for Hill Bracket, [K2.72113.0](#)



CLM-4, cforce plus Gear Screw, [K2.72127.0](#)

CLM-4 Gear assembly with modul 0.6, 70 teeth, [K2.72111.0](#)

CLM-4 Gear assembly with 48 pitch, 75 teeth, [K2.0002044](#)

CLM-4 Gear assembly with module 0.5, 80 teeth, [K2.72110.0](#)

CLM-4 Gear assembly with module 0.4/64 pitch, 100 teeth, [K2.72109.0](#)

CLM-3 & Accessories



Controlled Lens Motor CLM-3 (Set) [K0.60057.0](#)



CLM-3 Motor Unit [K2.65143.0](#)



Cable for CLM-3 Motor, [K2.65145.0](#)



Gear for Cine Lenses Module 0.8, 60 teeth for CLM-3, [K2.65142.0](#)



Standard Clamp Console for CLM-3 [K2.65140.0](#)



Clamp Console-2 for CLM-3 [K2.65141.0](#)



19 mm to 15 mm inserts for CLM-3 (pair), [K2.0002077](#)



CLM-3 gear module 0.8/32 pitch, 60 teeth, [K2.65142.0](#)

CLM-3 gear module, 0.8/32 pitch, 60 teeth, 25mm extra-wide, [K2.0001256](#)

CLM-3 gear module 0.6, 84 teeth, [K2.0001918](#)

CLM-3 gear module with 48 pitch, 90 teeth, [K2.0002055](#)

CLM-3 gear module 0.5, 96 teeth, [K2.0001914](#)

CLM-3 gear module 0.4/64 pitch, 120 teeth, [K2.0001911](#)

LDE-1 Lens Data Encoder



Lens Data Encoder LDE-1, [K2.0002680](#)



LDE-1 Cable [K2.0003040](#)



LDE-1 Gear m0.8/32p, 60t, [K2.0003036](#)
 For standard cine lenses focus/iris/zoom, Panavision focus only.

LDE-1 Gear m0.4/64p, 120t, [K2.0003050](#)
 For Panavision iris, Fujinon ENG iris, Canon ENG iris.

LDE-1 Gear 48p, 90t, [K2.0003052](#)
 For Panavision zoom.

Lens Type	Focus Gear	Iris Gear	Zoom Gear
CINE	Module 0.8 / 32 pitch	Module 0.8 / 32 pitch	Module 0.8 / 32 pitch
Panavision	Module 0.8 / 32 pitch	Module 0.4 / 64 pitch	48 pitch (no common pitch equivalent)
Fujifilm B4 ENG	Module 0.6 (no common pitch equivalent)	Module 0.4 / 64 pitch	Module 0.6 (no common pitch equivalent)
Canon B4 ENG	Module 0.5 (no common pitch equivalent)	Module 0.4 / 64 pitch	Module 0.5 (no common pitch equivalent)