

### ALEXA LF Camera Sets



ALEXA Pro Camera Sets contain an ALEXA camera, sufficient media and a number of must-have accessories to get you up and shooting quickly.

#### ALEXA LF Basic Camera Set, [K0.0019228](#)

- Includes:
- K1.0014861 1x ALEXA LF camera body
  - K2.0008429 1x Codex SXR Capture Drive Adapter
  - K2.0006338 1x Codex SxS to SXR Adapter
  - K2.72018.0 1x Transcend SD card
  - K2.72008.0 1x ALEXA Electronic Viewfinder EVF-1
  - K2.74001.0 1x Viewfinder Mounting Bracket VMB-3
  - K2.72012.0 1x Viewfinder Cable Short (0.35m/1.2ft) KC 150-S
  - K2.72007.0 1x Center Camera Handle (CCH-1)
  - K2.0016936 1x ARRI PL-to-LPL Adapter
  - KK.0015010 1x Wireless Video Receiver WVR-1, Basic Set

#### ALEXA LF Pro Camera Set, 1 TB, [KB.72010.D](#)

- Includes:
- K0.0018830 1x ALEXA LF Basic Camera Set for Pro Set (1 TB)
  - K2.0006942 4x SXR Capture Drive 1TB
  - K2.0018790 1x ALEXA LPL LF FSND Filter Set, Full
  - K0.71030.0 1x ALEXA Bundle Accessory Set (EV/Plus/W/LF)

#### ALEXA LF Pro Camera Set, 2 TB, [KB.72020.D](#)

- Includes:
- K0.0018832 1x ALEXA LF Basic Camera Set for Pro Set (2 TB)
  - K2.0006157 4x Codex SXR Capture Drive 2TB
  - K2.0018790 1x ALEXA LPL LF FSND Filter Set, Full
  - K0.71030.0 1x ALEXA Bundle Accessory Set (EV/Plus/W/LF)

#### ALEXA LF Pro Camera Set (SxS Pro+ 256 GB), [KB.72030.D](#)

- Includes:
- K0.0018833 1x ALEXA LF Basic Camera Set for Pro Set, SxS Pro+ 256 GB
  - K2.0014951 5x Sony SxS PRO+ Card 256GB
  - K2.0018790 1x ALEXA LPL LF FSND Filter Set, Full
  - K0.71030.0 1x ALEXA Bundle Accessory Set (EV/Plus/W/LF)

#### ALEXA Bundle Accessory Set (EV/Plus/W/LF), [K0.71030.0](#)

- Includes:
- K2.72021.0 1x Cable ALEXA ETH/RJ45 (3.0m/9.8ft) KC 153-S
  - K2.72017.0 1x Leveling Block LB-1
  - K2.74000.0 1x Viewfinder Extension Bracket VEB-3
  - K2.66172.0 1x Bridge Plate Adapter BPA-2
  - K2.72031.0 1x ALEXA 12V Accessory Cable KC 154-SP-S
  - K2.72083.0 1x Shoulder Pad SP-4
  - K2.72013.0 1x Viewfinder Cable Medium (0.65m/2.1ft) KC 151-S
  - K2.72015.0 1x Handle Extension Block HEB-2

Note 1: Docks or on-board battery adapters are not included and can be ordered separately.  
 Note 2: For use with LF FSND filters, the included FSND shim has to be installed to assure proper flange focal depth.

### Viewfinder System



**ALEXA Electronic Viewfinder EVF-2**, K2.008397

- Viewfinder Cable**  
 35 cm, KC 150-S K2.72012.0  
 65 cm, KC 151-S K2.72013.0



**Viewfinder Extension Bracket VEB-3**, K2.74000.0



**Viewfinder Mounting Bracket, VMB-3** K2.74001.0



**Heated Eyecup, HE-7**  
 K2.0003898

### LPL Mounts



**ARRI LPL Mount ALEXA**  
[K2.0019072](#)



**ARRI PL to LPL Adapter**  
[K2.0016936](#)

### Media & Adapters



For details regarding Recording Medias please see Configuration Overview 1.9.0

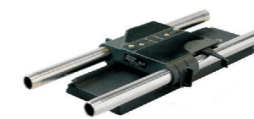
### Accessories



**Remote Control Unit RCU-4**, K2.72036.0  
 (incl. ALEXA Ethernet Remote Cable (2m/6.6ft) KC 157-S K2.72040.0)



**Transvideo Starlite ARRI-WVS**  
[K2.0015243](#)



**Bridge Plate Set**  
 BP-8, 19mm rods, K2.47090.0  
 BP-9, 15mm rods, K2.47091.0  
 BPA-2 needed



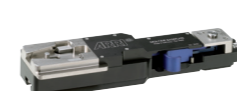
**Bridge Plate Adapter BPA-2**  
 (for BP-3, 5, 8 or 9)  
[K2.66172.0](#)



**Universal Adapter Plate UAP-1**  
 K2.72102.0



**Wedge Adapter, WA-1**  
 (for Quick Release HD-Baseplate) K2.72002.0 (spare)



**Quick Release HD Baseplate**  
[K2.47796.0](#)



**Shoulder Pad SP-4**  
 K2.72083.0



**Rod Mounting Bracket RMB-2**, [KK.0005807](#)



**Centre Camera Handle CCH-1**, [K2.72007.0](#) (spare)



**Side Camera Handle, SCH-1** K2.72016.0



**Adjustable Center Grip tall, ACG-2**, K2.72022.0



**Handle Extension Block HEB-1**  
 (without tape hook)  
[K2.0001016](#)

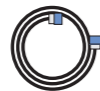


**Handle Extension Block HEB-2**  
 (with tape hock)  
 K2.72015.0



**ALEXA Handgrip Set**  
 K0.71033.0

### Cables



- Cable LCS (5p) - LBUS (0.8m/2.6ft) - K2.0007318
- ALEXA 12V Accessory Cable KC 154-SP-S, K2.72031.0 (coiled)
- ALEXA Ethernet Cable 3m KC 153-S, K2.72021.0
- ALEXA EXT - EXT Cable 2m KC 155-S, K2.72032.0
- ALEXA Ethernet-Ethernet Cable 2M KC 156-S, K2.72033.0
- ALEXA Ethernet Remote Cable (1m/3.3ft) KC 158-S, K2.72041.0
- ALEXA Ethernet Remote Cable (2m/6.6ft) KC 157-S, K2.72040.0

**ALEXA Ethernet Extension Cable (15m/50ft) for RCU-4**  
 KC 159-S, K2.72043.0 (up to three KC-159-S for total length of 47m/154ft with K2.72040.0 or 46m/151ft with K2.72041.0)

### Power Supply & Battery Adapter



**Battery Adapter Back Hi-Load BAB-HV V-mount for ALEXA LF**  
[K2.0019453](#)



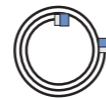
**Battery Adapter Back Hi-Load BAB-HG Gold-Mount for ALEXA LF**, [K2.0019456](#)



**Hawk-Woods RP-CFA1 Battery Adapter**  
 K2.0019383



**ARRI Power Supply Light 24V**  
 K2.0034493



**Power Cable**  
 KC-20 K2.41966.0  
 KC-29 K2.44693.0 (coiled)



**Camera Handgrip Right**, [K2.45886.0](#)



**Extension for Handgrip**  
[K2.47136.0](#)



**Leveling Block LB-1**, K2.72017.0



**Ultrasonic Distance Measure UDM-1 Set** [K0.60055.0](#)  
 Cable UDM-ALEXA K2.65261.0



**Ext Distribution Box EDB-1**  
 K2.72038.0



**ALEXA LF/ALEXA SXT W Case**  
 K2.0015098