

## Configuration Overview | 1.1.0 / 2020.05

### ALEXA SXT W Sets

A 35 format film-style digital camera with an electronic viewfinder and four sensor modes: Open Gate, 4:3, 6:5 and 16:9. Also includes built-in FSND filter holder and Lens Data System. Records ARR-IRAW onto in-camera SXR Capture Drives or XR Capture Drives. Records QuickTime ProRes (4444 XQ, 4444, 422 HQ or 422) files in recording resolutions of HD, 2K, 4K UHD or 4K Cine onto in-camera SXR Capture Drives, XR Capture Drives, SxS PRO cards (SxS Adapter 2 required), SxS PRO+ cards (SxS Adapter 2 required) or CFast 2.0 cards (CFast 2.0 Adapter 2 required). Can process ASC CDL values and 3D LUTs. Four independent monitoring outputs: EVF-1 and MON OUT 1, 2, 3 and a clone of MON 1. The built in wireless radios allow interference-free transmission of HD video, WiFi and Electronic Control System (ECS). Exposure through electronic rolling shutter: 5.0° - 358.0°.

<b>ALEXA SXT W Basic Camera Set,</b>	K0.0014994
Includes:	
ALEXA SXT W camera body	K1.0014744
SXR Adapter	K2.0008429
XR Adapter	K2.0008430
SD Card	K2.72018.0
ALEXA Electronic Viewfinder EVF-1	K2.72008.0
Viewfinder Mounting Bracket VMB-3	K2.74001.0
Viewfinder Cable Short (0.35m/1.2ft) KC 150-S	K2.72012.0
Center Camera Handle (CCH-1)	K2.72007.0
Wedge Adapter (WA-1)	K2.72002.0

Note: SXR Capture Drives, XR Capture Drives, SxS Adapter 2, CFast 2.0 Adapter 2, docks, SxS PRO cards, SxS PRO+ cards, CFast 2.0 cards, FSND filters and on-board battery adapters are not included and can be ordered separately.



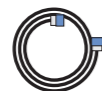
<b>ALEXA SXT W Pro Camera Set (1 TB),</b>	KB.72004.D
Includes:	
SXT W Basic Camera Set for Pro Set 1TB	K0.0014993
FSND Filter Set (Full)	K2.72139.0
ALEXA Bundle Accessory Set (EV/Plus/W)	K0.71030.0
SXR Capture Drive 1 TB	K2.0006942 4x

Note 1: Docks or on-board battery adapters are not included and can be ordered separately.  
Note 2: For use with FSND filters, the included FSND shim has to be installed to assure proper flange focal depth.

<b>ALEXA SXT W Pro Camera Set (2 TB),</b>	KB.72005.D
Includes:	
FSND Filter Set (Full)	K2.72139.0
ALEXA Bundle Accessory Set (EV/Plus/W)	K0.71030.0
SXR Capture Drive 2 TB	K2.0006157 4x
SXT W Basic Camera Set for Pro Set 2TB	K0.0015069

Note 1: Docks or on-board battery adapters are not included and can be ordered separately.  
Note 2: For use with FSND filters, the included FSND shim has to be installed to assure proper flange focal depth.

### Cables



**ALEXA 3D Cable Set,** K0.71032.0  
One ALEXA EXT to EXT Cable for sensor and HD outputs sync and one ALEXA Ethernet to Ethernet Cable for camera settings sync (Set incl. KC155-S, K2.72032.0 and KC156-S, K2.72033.0)

**UMC Connection Cable K-UMC3-ALEXA,** K2.65239.0  
**ALEXA 12V Accessory Cable KC 154-SP-S,** K2.72031.0 (coiled)  
**ALEXA Ethernet Cable 3m KC 153-S,** K2.72021.0  
**ALEXA EXT - EXT Cable 2m KC 155-S,** K2.72032.0  
**ALEXA Ethernet-Ethernet Cable 2M KC 156-S,** K2.72033.0  
**ALEXA Ethernet Remote Cable (1m/3.3ft) KC 158-S,** K2.72041.0  
**ALEXA Ethernet Remote Cable (2m/6.6ft) KC 157-S,** K2.72040.0

**ALEXA Ethernet Extension Cable (15m/50ft) for RCU-4 KC 159-S,** K2.72043.0 (up to three KC-159-S for total length of 47m/154ft with K2.72040.0 or 46m/151ft with K2.72041.0)

### Power Supply & Battery Adapter



<b>Battery Adapter Back for V Mount, BAB-V</b> K2.72010.0	<b>Battery Adapter Back for Gold Mount, BAB-G</b> K2.72003.0
<b>Battery Adapter Top for V Mount, BAT-V</b> K2.72011.0	<b>Battery Adapter Top for Gold Mount, BAT-G</b> K2.72006.0

<b>ARRI Power Supply Light 24V,</b> K2.0034493	<b>Power Cable KC-20</b> K2.41966.0, <b>KC-29</b> K2.44693.0 (coiled)
--	--

### Viewfinder System



**Electronic Viewfinder EVF-1,** K2.72008.0

**Viewfinder Cable**  
35 cm, **KC 150-S** K2.72012.0  
65 cm, **KC 151-S** K2.72013.0  
200 cm, **KC 152-S** K2.72014.0



**Viewfinder Extension Bracket VEB-3,** K2.74000.0



**Viewfinder Mounting Bracket, VMB-3** K2.74001.0



**Heated Eycup, HE-7** K2.0003898

### Media & Adapters

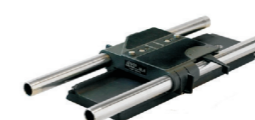


For details regarding Recording Medias please see Configuration Overview 1.9.0

### Accessories



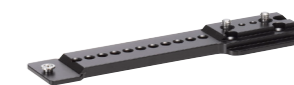
**Remote Control Unit RCU-4,** K2.72036.0 (incl. ALEXA Ethernet Remote Cable (2m/6.6ft) KC 157-S K2.72040.0)



**Bridge Plate Set BP-8, 19mm rods,** K2.47090.0  
**BP-9, 15mm rods,** K2.47091.0  
BPA-2 needed



**Bridge Plate Adapter BPA-2** (for BP-3, 5, 8 or 9) K2.66172.0



**Universal Adapter Plate UAP-1** K2.72102.0



**Wedge Adapter, WA-1** (for Quick Release HD-Baseplate) K2.72002.0 (spare)



**Quick Release HD Baseplate** K2.47796.0



**Shoulder Pad SP-4** K2.72083.0



**Rod Mounting Bracket RMB- 2,** K0.60209.0



**Centre Camera Handle CCH-1,** K2.72007.0 (spare)



**Side Camera Handle, SCH-1** K2.72016.0



**Adjustable Center Grip tall, ACG-2,** K2.72022.0



**Handle Extension Block HEB-1** (without tape hook) K2.0001016



**Handle Extension Block HEB-2** (with tape hock) K2.72015.0



**ALEXA Handgrip Set** K0.71033.0



**Camera Handgrip Right,** K2.45886.0



**Extension for Handgrip** K2.47136.0



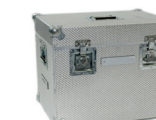
**Leveling Block LB-1,** K2.72017.0



**Ultrasonic Distance Measure UDM-1 Set** K0.60055.0  
**Cable UDM-ALEXA** K2.65261.0



**Ext Distribution Box EDB-1** K2.72038.0



**ALEXA LF/ALEXA SXT W Case** K2.0015098