

Arrihead



ARRIHEAD 2
with integrated encoders, K2.52090.0
without encoders, K2.43670.0

Reduction Gear, K2.34301.0
Wedge Plate, K2.47171.0
Handwheel, big, K2.47001.0

Support Accessories



Shoulder Belt Adapters SBA-1, K2.0001223



Microphone Holder Bracket MHB-1, K2.66256.0



Lightweight Bridge Support LBS-2, K2.66275.0



Universal Bridge Support UBS-3, K2.0013320



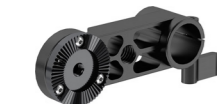
Rosette Adapter RA-1 (pair)
K2.66174.0



Rosette Adapter RA-2 (pair)
K2.65269.0



Rosette Adapter RA-3 (pair)
K2.65268.0



Rosette Adapter RA-4
K2.0014825



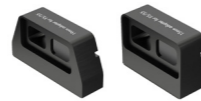
Extension Spacer 50 mm
K2.0013615

Quick Release HD

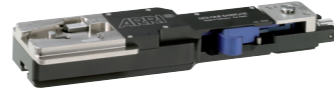


Quick Release Plate QRP-1, K2.0000399

Quick Release HD

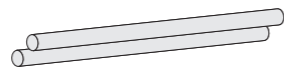


19mm Adapter for Sony F5/F55, K2.66271.0
15mm Adapter for Sony F5/F55, K2.66272.0



Quick Release HD Baseplate
K2.47796.0

Support Rod Holder 19 mm, K2.47798.0
Support Rod Holder 15 mm, K2.47799.0



Bridge Plate Sled BPS-1, K2.47797.0

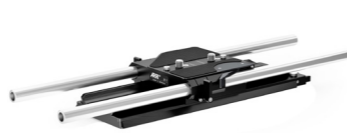
Bottom Plates



Bridge Plate Sets



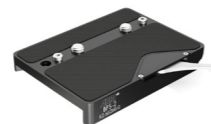
Bridge Plate Set BP-8 19 mm, K2.47090.0



Bridge Plate Set BP-9 15 mm, K2.47091.0

Bridge Plate Sled

Bridge Plate Sled BPS-2 Set
KK.0005813, includes:



Bridge Plate Sled BPS-2
K2.66260.0

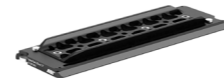


Bottom Dovetail Plate 300mm/12in
K2.0015896

Bottom Plates



Bottom Dovetail Plate 150mm/6in
K2.0020427



Bottom Dovetail Plate 300mm/12in
K2.0015896



Bottom Dovetail Plate 450mm/18in
K2.0015950



Bottom Dovetail Plate 600mm/24in
K2.0015952



Rod Support Bracket RSB-15, K2.0000437
Rod Support Bracket RSB-19, K2.0000440



Bottom Plate Set 600 mm/24" incl. RSB-15, KK.0005684



Bottom Plate Set 600 mm/24" incl. RSB-19, KK.0005685

LWS Shoulder Support



Universal Shoulder Pad for 15mm rods USP-2,
K2.66209.0
(incl. UMB-1 and straight foam)



Universal Mounting Bracket for 15mm rods (UMB-1)
K2.66168.0



Camera Shoulder Pad CSP-1, K2.0006807

Lens Support - Studio



Lens Support LS-9 for 19 mm rods
K2.47227.0



Lens Support LS-10 for 15 mm rods
K2.47228.0

Lens Support - Lightweight



Lightweight Lens Support LLS-1 for 15 mm rods, K2.0017029



Zip Gear LS-11 Set, KK.0005756
For a second attachment of DSLR cameras on the rods; consists of 3 zip gears cpl and LS-11 (without rods)



LS-11 Lens Support, K2.66141.0



Lens Support Pin LSP-1 (incl. 2 pcs. 1/4" to 3/8" adapter),
K2.66145.0



Lens Support Pin LSP-2 (with 3/8" thread) K2.66220.0

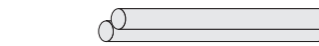
19 mm Studio Rods



540 mm, K2.72028.0
stainless steel



440 mm, K2.0001022
stainless steel



340 mm, K2.66269.0
stainless steel, lightweight



240 mm, K2.66270.0
stainless steel, lightweight



150 mm, K2.0016090
stainless steel, lightweight



90 mm, K2.0016088
stainless steel, lightweight



Single Support Rods 540 mm
K2.0014959, carbon fibre, black



Single Support Rods 340 mm
K2.0014954, carbon fibre, black