

Mini Follow Focus MFF-2



CONFIGURATION OVERVIEW – 7.1.0 / 2018.07

© 2010 Arnold & Richter Cine Technik GmbH & Co. Betriebs KG. All rights reserved. This material is provided "as is" for information purposes only without any warranty. ARRI assumes no responsibility with regard to the performance or use of the products or typographical errors or inaccuracies of given information. Product specifications are subject to change without notice. For a full listing of all available components consult the price list.

Mini Follow Focus MFF-2 Cine Sets

Cine: Gear Ratio 2:1



MFF-2 Cine Standard Set

Consists of:
Mini Follow Focus MFF-2 Cine,
Focus Knob Standard left,
Focus Gear 0.8/43 teeth,

KK.0005759
K2.65255.0
K2.65253.0
K2.65259.0



MFF-2 Cine Hard Stop Set

Consists of:
Mini Follow Focus MFF-2 Cine,
Focus Knob Hard Stop,
Focus Gear 0.8/43 teeth,

KK.0005760
K2.65255.0
K2.65248.0
K2.65259.0



MFF-2 Cine 2-Speed Set

Consists of:
Mini Follow Focus MFF-2 Cine,
Focus Knob 2-Speed,
Focus gear 0.8/43 teeth,

KK.0005761
K2.65255.0
K2.66129.0
K2.65259.0



MFF-2 Cine Standard/Hard Stop Set

Consists of:
Mini Follow Focus MFF-2 Cine,
Focus Knob Standard left,
Focus Knob Hard stop,
Focus Gear 0.8/43 teeth,

KK.0005762
K2.65255.0
K2.65253.0
K2.65248.0
K2.65259.0

Mini Follow Focus MFF-2 HD Sets

HD: Gear Ratio 1:1



MFF-2 HD ENG Standard Set

Consists of:
Mini Follow Focus MFF-2 HD,
Focus Knob Standard left,
Focus Gear 0.6/64 teeth,
Focus Gear 0.5/78 teeth,

KK.0005772
K2.65260.0
K2.65253.0
K2.47632.0
K2.47631.0



MFF-2 HD ENG Hard Stop Set

Consists of:
Mini Follow Focus MFF-2 HD,
Focus Knob Hard Stop,
Focus Gear 0.6/64 teeth,
Focus Gear 0.5/78 teeth,

KK.0005773
K2.65260.0
K2.65248.0
K2.47632.0
K2.47631.0



MFF-2 HD SLR Hard Stop Set

Consists of:
Mini Follow Focus MFF-2 HD,
Focus Knob Hard Stop,
Focus gear 0.8/43 teeth,

KK.0005774
K2.65260.0
K2.65248.0
K2.65259.0

Base and Accessories MFF-2



MFF-2 Cine, K2.65255.0
gears and nob need to be ordered separately
gear ratio: 1:2

Flexible Shaft, short
K2.34100.0 (300 mm)



MFF-2 HD, K2.65260.0
gears and knob need to be ordered separately
gear ratio: 1:1



Flexible Shaft, long
K2.32731.0 (900 mm)



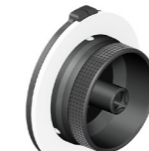
Focus lever
K2.32730.0



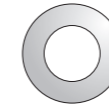
Hard Stop Focus Knob for left, K2.65248.0
(incl. 1x K4.47621.0)



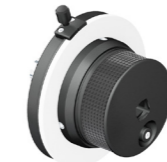
Marking Disk bevelled, flat, K4.47621.0



Focus Knob Standard left, K2.65253.0
(incl. 1x K2.32701.0)



Marking disk bevelled, flat, K2.47248.0



2-Speed Focus Knob left, K2.66129.0
(incl. 1x K2.32701.0)

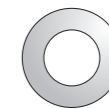


Marking Disk bevelled, flat, K2.32701.0



Zip Gear cpl., K2.66131.0
incl. zoom or locking pin to equip photo lens with a proper 0,8 gearing zooming or as a support with LS-11 (for 15 mm rods - rods not incl.)

Zip Gear Basic Set, KK.0005755
consists of 2 zip gears cpl.



Set of Marking Disk (10x), KK.0005768

Set of Marking Disk (5x), KK.0005769

Follow Focus Gears



FF Gear 0.8 Mod,
35 Tooth, 10mm

Module Gear for smaller prime lenses and 16mm zooms
K2.65276.0



FF Gear 0.8 Mod,
35 Tooth, 25mm

Gear for lenses with axial movement of focus ring
K2.47557.0



FF Gear 0.8 Mod,
35 Tooth, 45mm

Gear for prime lenses with large barrels or lenses with extending element when pulling focus, K2.0020132



FF Gear 0.8 Mod,
43 Tooth, 45mm

Gear for zoom lenses with large barrels or lenses with extending element when pulling focus, K2.0020752



FF Gear 0.8 Mod,
43 Tooth, 6mm

Module Gear for larger prime lenses and 35mm zooms
K2.65259.0



FF Gear 32 Dp, 14,5 PA,
35 Tooth, 10mm

Module Gear for Panavision lenses
K2.66055.0



FF Gear 0.5 Mod,
78 Tooth, 6mm, ENG/EFP

Focus Gear 0.5 Module for Canon ENG/EFP lenses
K2.47631.0



FF Gear 0.5 Mod,
78 Tooth, 10mm, ENG

Module Gear - wide face for Canon and Angenieux ENG lenses, K2.65124.0



FF Gear 0.6 Mod,
64 Tooth, 6mm, ENG/EFP

Focus Gear 0.6 Module for Fujinon ENG/EFP lenses
K2.47632.0



FF Gear 0.6 Mod,
64 Tooth, 10mm, ENG

Module Gear - wide face for Fujinon ENG lenses
K2.65125.0



FF Gear 0.8 Mod,
64 Tooth, 6mm

Gear for larger prime lenses or for higher transmission ratio on FF5 HD with larger lenses, K2.65102.0



Friction gear
K2.66130.0