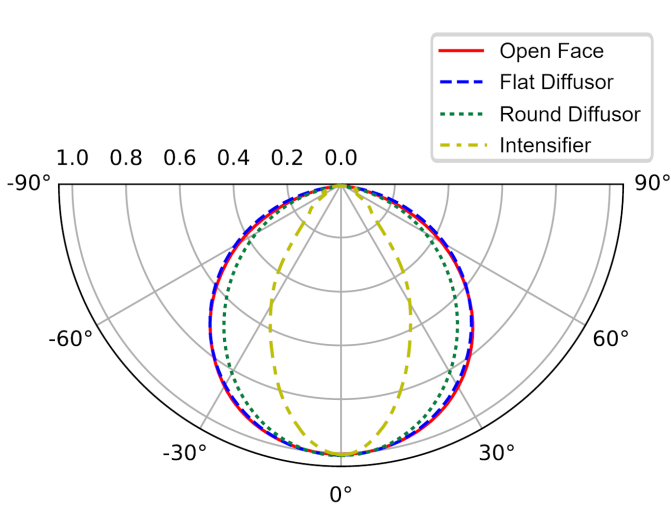




Product:	ARRI Omnibar 2 / Omnibar 4
Accessories:	Flat / Round Diffuser, Intensifier
CCT Range:	1,700 K - 20,000 K
Beam Angle ¹ :	60° - 145°
Field Angle ² :	116° - 267°
CRI:	> 97
Light Aperture:	2 ft / 4 ft linear
Max. Power (Boost Mode):	31.25 W Omnibar 2 62.50 W Omnibar 4

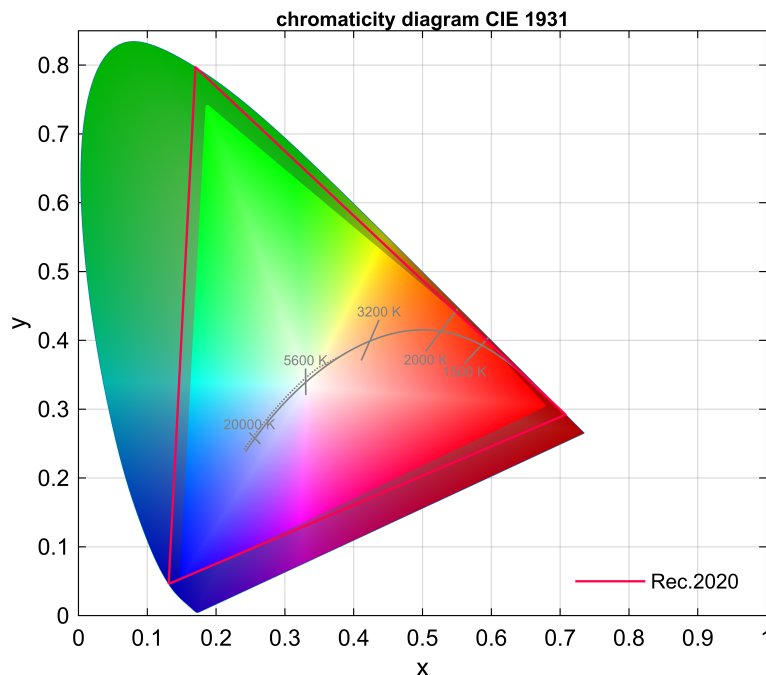
¹: full angle at 50 % of peak luminous intensity
²: full angle at 10 % of peak luminous intensity

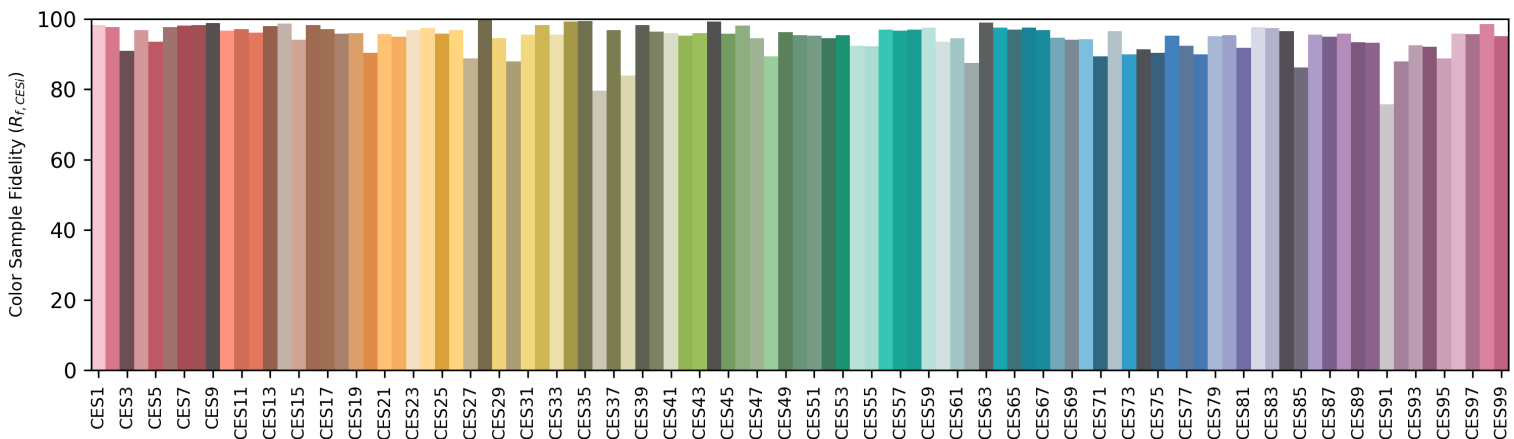
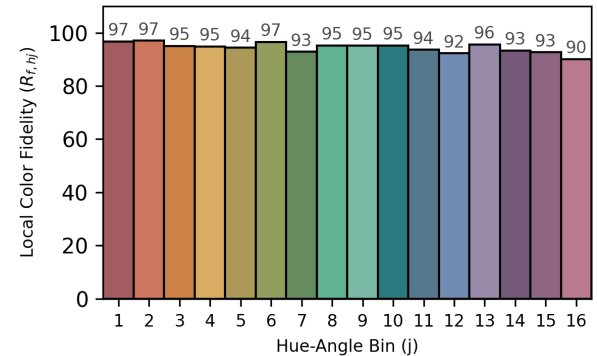
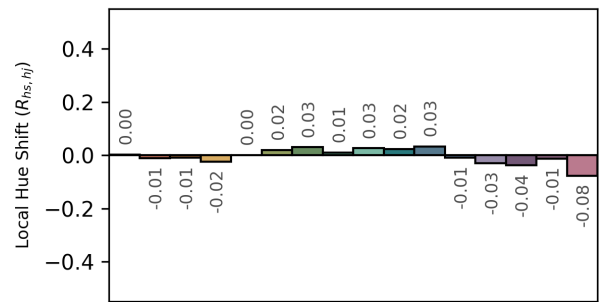
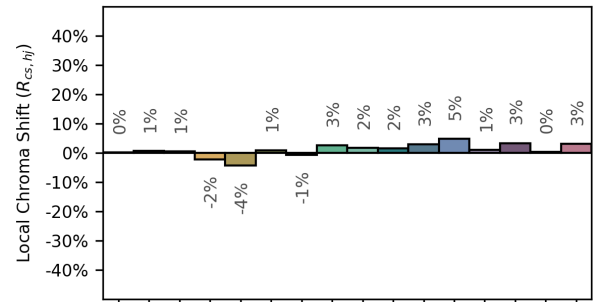
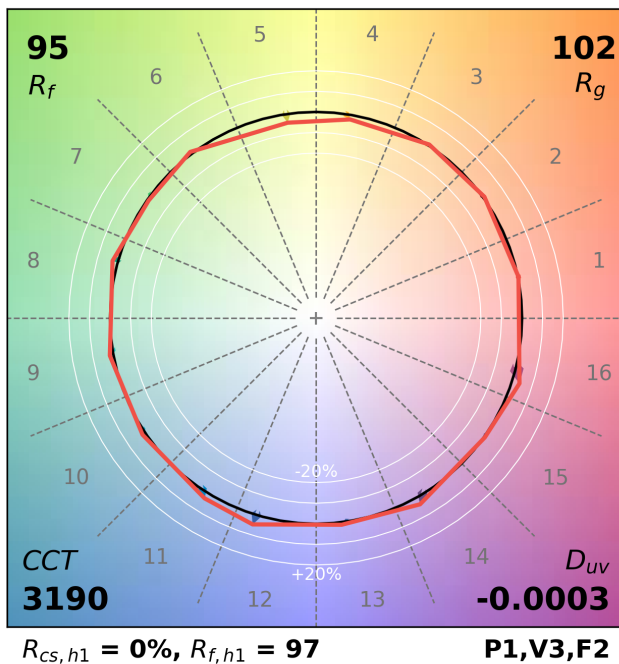
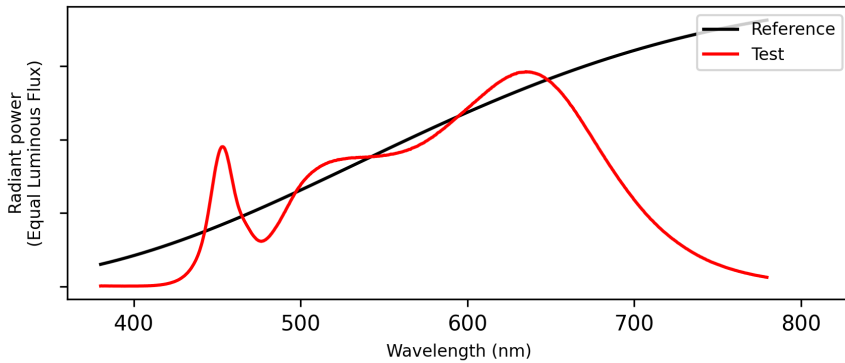
Light Distribution & Photometric Data



		5,600 K		3,200 K			
Open Face	Flat Diffusor	Round Diffusor	Intensifier	Open Face	Flat Diffusor	Round Diffusor	Intensifier
2 ft	4 ft	2 ft	4 ft	2 ft	4 ft	2 ft	4 ft
Luminous Flux							
2,351 lm	4,981 lm	1,641 lm	3,437 lm	1,906 lm	4,062 lm	1,205 lm	2,465 lm
2,129 lm	4,521 lm	1,475 lm	3,437 lm	1,735 lm	3,674 lm	1,084 lm	2,238 lm
Illuminance @ 1 m / 3.3 ft							
784 lx	1,475 lx	419 lx	737 lx	473 lx	832 lx	834 lx	1,287 lx
710 lx	1,339 lx	377 lx	663 lx	431 lx	752 lx	751 lx	1,168 lx
Illuminance @ 3 m / 9.8 ft							
95.5 lx	195 lx	49.5 lx	100 lx	56.0 lx	115 lx	105 lx	200 lx
86.5 lx	177 lx	44.5 lx	90.0 lx	51.0 lx	104 lx	94.5 lx	182 lx
Illuminance @ 5 m / 16.4 ft							
34.3 lx	72.0 lx	17.9 lx	37.2 lx	20.3 lx	42.9 lx	37.8 lx	75.7 lx
31.0 lx	65.4 lx	16.1 lx	33.5 lx	18.5 lx	38.8 lx	34.0 lx	68.7 lx
Beam Angle							
115°	115°	130°	130°	145°	145°	60°	60°
115°	115°	130°	130°	145°	145°	60°	60°

Color Gamut Typical Values

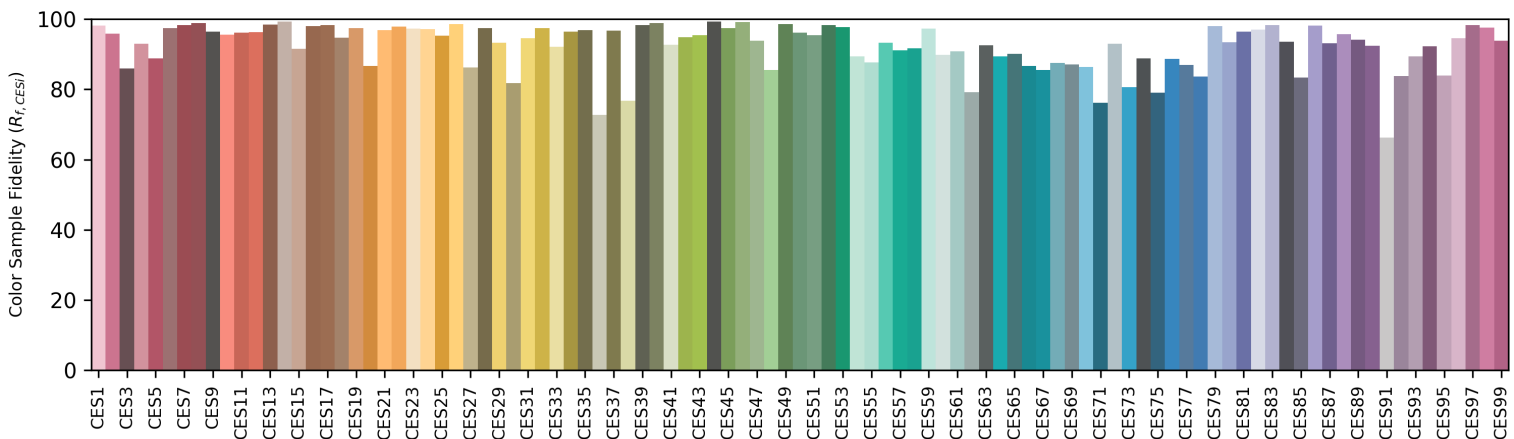
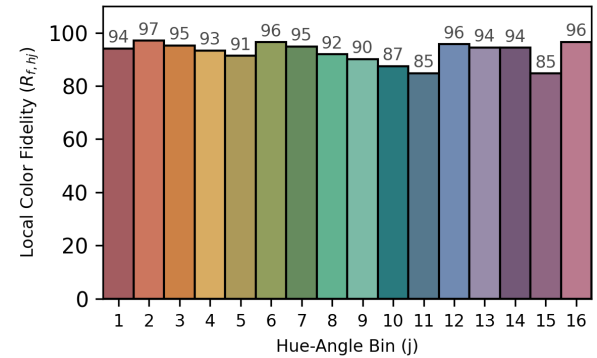
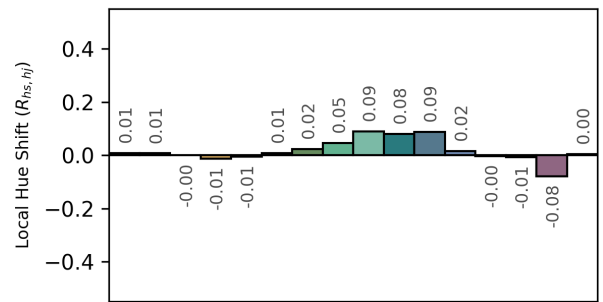
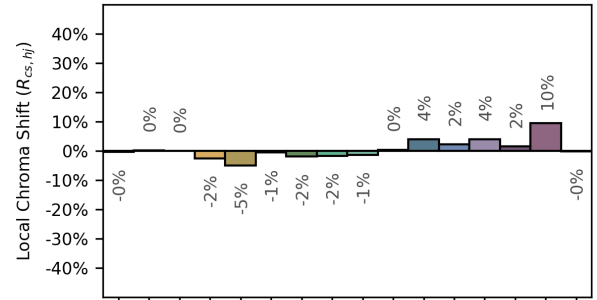
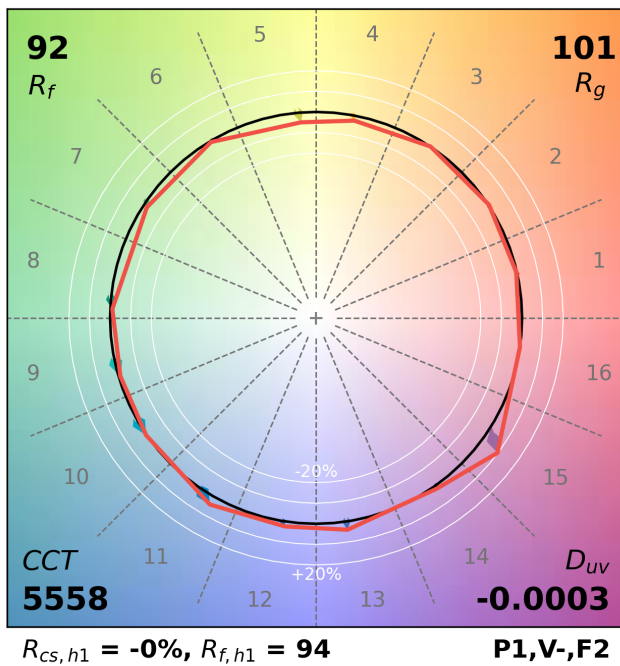
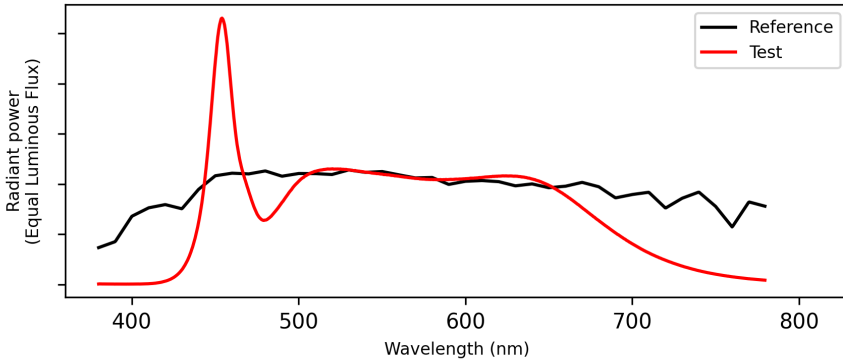




Notes: This is the recommended method for displaying ANSI/IES TM-30-18 information.

x 0.4236
y 0.3983
u' 0.2444
v' 0.5171

CIE 13.3-1995
(CRI)
 R_a 97
 R_g 99



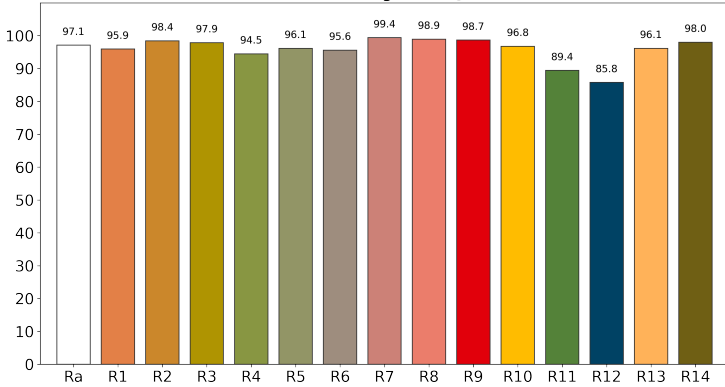
Notes: This is the recommended method for displaying ANSI/IES TM-30-18 information.

x 0.3311
y 0.3394
u' 0.2066
v' 0.4765

CIE 13.3-1995
(CRI)
Ra 97
R9 96

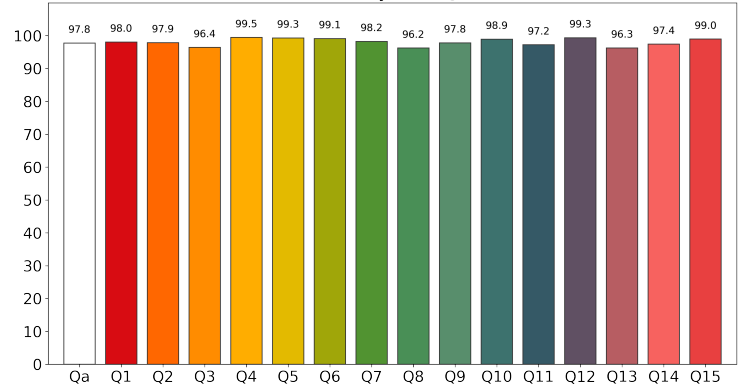
CRI | CIE 13.3:1995

Colour Rendering Index @3200 K

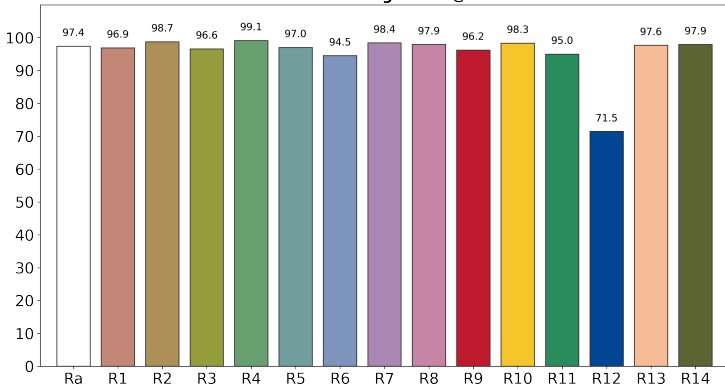


CQS | NIST CQS 9.0

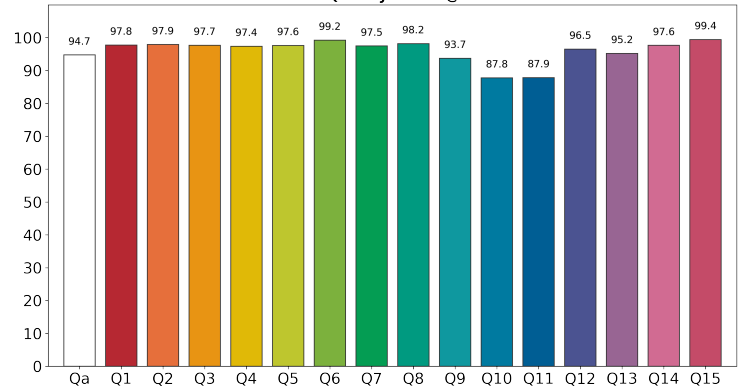
Colour Quality Scale @3200 K



Colour Rendering Index @5600 K



Colour Quality Scale @5600 K



Colorimetric Performance

CCT	CRI	CQS	TM-30-18 Rf	TM-30-18 Rg	TLCI
1700 K	90	90	89	103	66
2000 K	92	93	92	103	82
2600 K	96	97	95	102	95
3200 K	97	98	95	102	97
4300 K	98	96	93	101	98
5600 K	97	95	92	101	98
6500 K	97	94	91	100	98
10000 K	95	92	88	98	96
20000 K	93	90	86	97	93

Spectral Distribution

