

Live Production System LPS-1

Software Update Package LPS-1 SUP 1.2.0

RELEASE NOTES

September 15, 2025



Overview

The LPS-1 Live Production System is the fiber transmission system forming the backbone of the ALEXA 35 Live - Multicam System and consists of the Fiber Base Station (FBS) and Fiber Camera Adaptor (FCA).

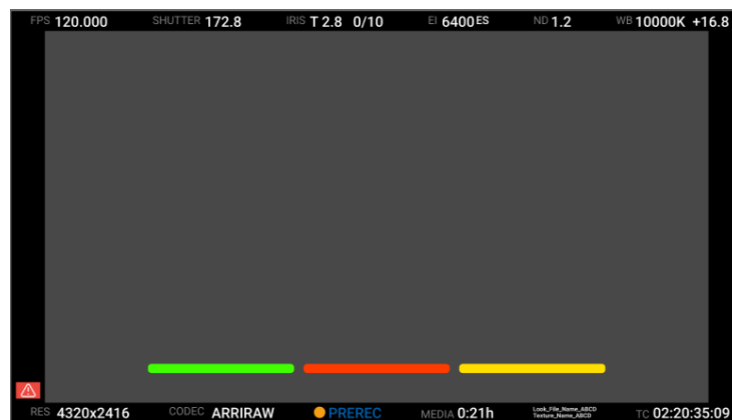
We are pleased to announce the release of LPS-1 Software Update Package SUP 1.2.0 as a public release. This update is compatible with all LPS-1 systems and can be downloaded from the [ARRI Software Update Packages](#) webpage.

Please review these release notes carefully, including the known issues section, and consult the Live Production System LPS-1 User Manual to ensure optimal operation.

LPS-1 Software Update Package SUP 1.2.0 New Features

- Bug fixes and enhancements.
- LPS-1 Fiber Base Station Monitor Output Camera Status overlay can now be displayed as a surround replicating the viewfinder image and provide technicians with real time information on the camera parameters, settings and Tally status.

Furthermore, the Fiber Base Station Monitor output with overlay can then be looped back into the AUX/TP input of the base station and output from the Fiber Camera Adaptor to provide an SDI video connection to an additional monitor at the camera.



- When operating the ALEXA 35 Live camera head with 4K UHD 12G SDI output, it is now possible through the web User Interface Video Matrix to set the 4 x 3G outputs from banks 1 & 2 to Single Link 3G outputs. These then provide additional single link outputs simultaneously to the 12G, HD and Monitor outputs providing additional single link outputs for distribution.
- The Return Video Button behavior can now be set through the LPS-1 web user interface to be momentary only. In that case, Return Video is only activated for the period that the button is held and it is de-activated on release.
- The FCA Return Output SDI connection now shows the last active video channel selected prior to a power cycle or reboot of the system. This is advantageous when the camera is remotely mounted and the FCA controls cannot be reached.
- When powering the LPS-1 system down from the FBS power button, a new shut down procedure ensures that the camera's ND filter is in the parked position.

Known issues fixed since last release.

- The audio matrix page of the Web User Interface allows routing of an audio source to either the left or right earpiece of an Intercom headset. However, this setting does not interact or change with the setting on the Intercom page.
- CRC Errors on channels 2 and 4 on all SDI outs when no source signal is routed to them.
- FCA Audio input gain setting is not automatically recalled after a reboot and so the level output at the FBS will be incorrect.
- Return video SDI output of FCA is reported as 1080P60 when the input at the FBS is 1080P59.94 and it is therefore possible that the monitoring device may not recognize the correct format.
- No SDI video output on HD Out when 1080P standard Genlock is used and the down converter setting for the output is changed from a 3G standard to a 1.5G Standard.
- Switching between 4:2:2 50 fps 2160P color bar pattern generated in FBS to a 4:2:2 12G 50 fps SDI input from ALEXA 35 Live causes unstable SDI outputs.

Software Compatibility

To ensure the latest enhancements are available with LPS-1 SUP 1.2.0, it is recommended to use the following software versions:

- ALEXA 35 Live ALEXA 35 SUP 5.1.0
- Skaarhoj RCP Pro: <https://devices.skaarhoj.com/otherpackages>
 - reactor.2.2.2.arm64.ipks
 - system-manager.1.0.9.arm.ipks
 - hardware-manager.1.0.5.arm64.ipks
 - devicecore-connector.1.0.2.arm64.ipks (optional)
<https://devices.skaarhoj.com/core/core-arri-camera?version=pre>
 - core-arri-camera.1.0.5.arm64.ipks

Further Information and Applications

Further information and applications of the ALEXA 35 Live Multicam System, can be found on the [ALEXA 35 Live](#) web page.

Update Procedure

The LPS-1 system can be updated via a PC connected through an Ethernet cable to one of the RJ45 management ports of the LPS-1 system.

1. Download the SUP 1.2.0 update file (LPS-1_1.2.0.zip) from the [ARRI Software Update Packages](#) webpage and double-click the downloaded .zip file to unpack it, or unpack it manually. This will extract two update files.

LPS-1_fw_1.2.0.raucb - Combined update file for LPS-1 FBS and FCA.

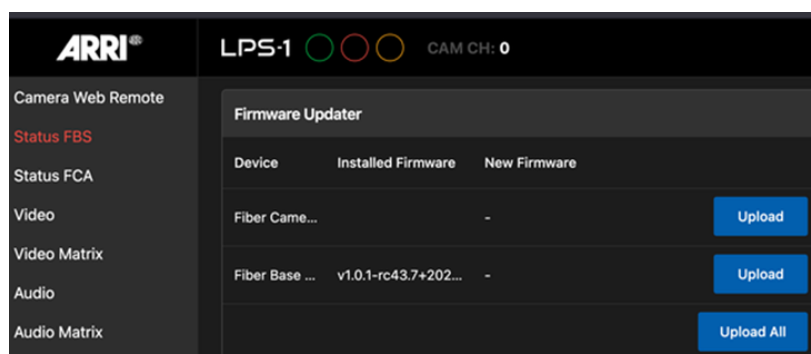
LPS-1_fw_FCA_1.2.0.raucb – Individual update file for FCA only.

2. Ensure that the LPS-1 system is powered on, the Fiber Camera Adaptor has an active fiber connection to the Fiber Base Station, and the system is fully booted.
- Open the LPS-1 Web User Interface by entering the IP address of the FBS into the address bar of a web browser and navigate to the Settings page.

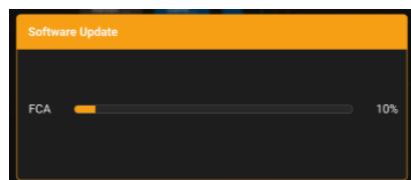
Clear web browser cache and reload LPS-1 Web User Interface before each update.

3. To update FBS and FCA together select *Settings > Firmware Updater* and click on 'Upload all' button. Browse to the location of the LPS-1_fw_1.2.0.raucb update file and select it.

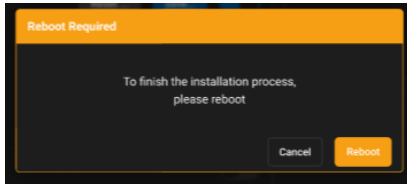
To update only the FCA *Settings > Firmware Updater > FCA* and click on the 'Upload' button. Browse to the location of the LPS-1_fw_FCA_1.2.0.raucb update file and select it.



4. Once the file is uploaded, a message is reported in a popup dialog box to prompt the user to start the upload process, and the progress of the update will be reported in a popup dialog window. Please allow approximately 5 minutes for the update.



5. To complete the update the system will prompt the user to perform a reboot.



OPTIONAL: If it is not desirable to perform a reboot at this time, it can be avoided by installing the Software Update Package a second time to ensure all internal devices are reconfigured.

6. Following the power on, check the versions in the settings page to confirm the update was successful (it may be necessary to refresh the page.)
7. Access the Web User Interface network page and check the camera connection status.

ALEXA 35 Live

The LPS-1 update does not update the following devices, which must be updated separately. Update files for these devices must be downloaded individually from the ARRI [Software Packages](#) webpage.

ALEXA 35 Live Update Procedure:

1. Download the update file from the [Software Update Packages for Cameras](#) webpage, double-click the downloaded .zip file to unpack it, or unpack it manually. This will extract two update files to your computer (*.SWU and *.lic.)
2. If not done beforehand, prepare the USB-C memory stick for use with the ALEXA 35 by connecting it to the camera. Then, go to *MENU > Media > Prepare USB Medium...* on the MVF-2 viewfinder menu or the Web Remote and press *CONFIRM*. This will create the required folder structure on the USB-C stick.
3. Connect the USB-C stick to your computer.
Place the downloaded *.SWU file in the *ARRI/ALEXA35/SUP* folder.
Place the downloaded *.lic file in the *ARRI/ALEXA35/LICENSES* folder.
4. The camera Software Update Package includes updates not only for the camera body but also for the MVF-2 viewfinder and the lens mount. Therefore, ensure that the MVF-2 viewfinder and the lens mount are connected to the camera during the update process.
5. Ensure the camera is connected to a power supply or powered by a fully charged battery to prevent power loss during the update.
6. Perform a factory reset on the camera with the menu item *MENU > Setup > Factory Reset...*
7. Connect the USB-C stick to the camera and navigate to the menu item.
MENU > System > Update > Update Camera...
8. Select the SUP file from the list and start the installation.
The MVF-2 as well as the camera side display will show a screen displaying the update progress. Please note, that the update can take up to 20 minutes.
The MVF-2 viewfinder may turn off during the update process and will not provide continuous visual feedback, refer to the camera side display for the update status in this case.
Do not power off or unplug the camera until it has rebooted.
After the update process has finished, a success message is displayed.
9. Ensure that the correct time zone is set in *MENU > System > System Time & Date*.
10. If the MVF-2 viewfinder or lens mount were not connected during the update, the camera will still store the updated software for these devices. The next time they are connected and have an older software version than the one stored in the camera, the camera will prompt you to update them.

In the rare event of an interrupted or failed update the camera may enter a state where the MVF-2 is unresponsive. In this situation, use the side display to enable Wi-Fi, connect to the camera, and reinstall the update using the Web Remote.

Downgrading the Camera

It is possible to downgrade an ALEXA 35 to a previous software release. However, please note that ALEXA 35 Live is not compatible with any software version earlier than SUP 2.0.0.

Skaarhoj RCP Update

To update the Blue Pill Enabled Skaarhoj RCP Pro ARRI V2B, please see the instructions on the Skaarhoj Update Software page here:

<https://wiki.skaarhoj.com/books/blue-pill-reactor/page/update-software>

Known Issues in SUP 1.2.0

- ALEXA 35 Live SDI Metadata is not available on MON, HD, QL3G Outputs or 3G outputs 1-4 of banks 1 & 2.
- FBS SDI Monitor Output video and LPS-1 status overlays are predominantly green in colour when the ALEXA 35 Live camera is set to output 12G 4:4:4 or 3G 4:4:4 formats.
- When the camera is set to either 1.5G or 3G output formats, embedded audio appears only on output 1 of the four outputs from 3G bank 1 & 2.
- The improvement of the intercom audio mixer includes a headroom to avoid clipping. A corresponding adaption of the audio input level is advised.