

LPS-1 Live Production System.

Software Update Package SUP 1.1.1

RELEASE NOTES

July 3rd, 2025



Overview

The LPS-1 Live Production System is the fiber transmission system forming the backbone of the ALEXA 35 Live - Multicam System and consists of the Fiber Base Station (FBS) and Fiber Camera Adaptor (FCA).

We are pleased to announce the release of LPS-1 Software Update Package SUP 1.1.1 as a public release. This update is compatible with all LPS-1 systems and can be downloaded from the [ARRI Software Update Packages](#) webpage.

Please review these release notes carefully, including the known issues section, and consult the Live Production System LPS-1 User Manual to ensure optimal operation.

LPS-1 Software Update Package SUP 1.1.1

For a complete feature list, please refer to the Live Production System LPS-1 User Manual.

- Fix for Audio and Intercom issues experienced in drop frame rates such as 23.976, 29.97 and 59.94.

Software Compatibility

To ensure the latest enhancements are available with LPS-1 SUP 1.1.1, it is recommended to use the following software versions:

- ALEXA 35 Live ALEXA 35 SUP 4.1.0
- Skaarhoj RCP Pro: <https://devices.skaarhoj.com/otherpackages>
 - reactor.2.2.0.arm64.ipks
 - system-manager.1.0.8.arm.ipks
 - hardware-manager.1.0.3.arm64.ipks
 - devicecore-connector.1.0.2.arm64.ipks (optional)
 - core-arri-camera.1.0.4.arm64.ipks

Further Information and Applications

Further information and applications of the ALEXA 35 Live Multicam System, can be found on the [ALEXA 35 Live](#) web page.

Update Procedure

The LPS-1 system can be updated via a PC connected through an ethernet cable to one of the RJ45 management ports of the LPS-1 system.

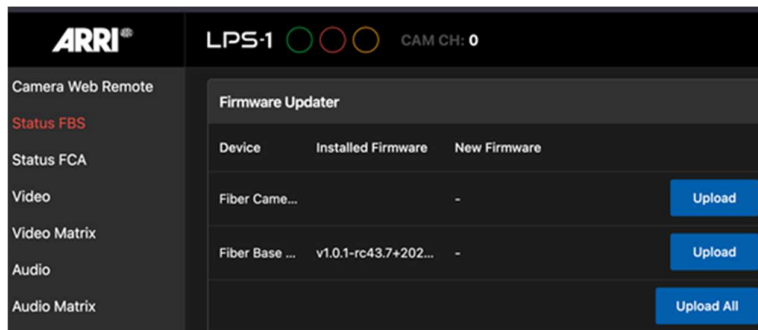
1. Download the SUP 1.1.1 update file (LPS-1_1.1.1.zip) from the [ARRI Software Update Packages](#) webpage and double-click the downloaded .zip file to unpack it, or unpack it manually. This will extract two update files.

LPS-1_fw_1.1.1.raucb - Combined update file for LPS-1 FBS and FCA.

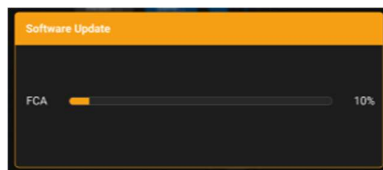
LPS-1_fw_FCA_1.1.1.raucb – Individual update file for FCA only.

2. Ensure that the LPS-1 system is powered on, the Fiber Camera Adaptor has an active fiber connection to the Fiber Base Station and the system is fully booted.
3. Open the LPS-1 Web User Interface by entering the IP address of the FBS into the address bar of a web browser and navigate to the Settings page.
4. To update FBS and FCA together select *Settings > Firmware Updater* and click on 'Upload all' button. Browse to the location of the LPS-1_fw_1.1.1.raucb update file and select it.

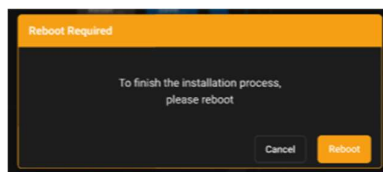
To update only the FCA *Settings > Firmware Updater > FCA* and click on the 'Upload' button. Browse to the location of the LPS-1_fw_FCA_1.1.1.raucb update file and select it.



5. Once the file is uploaded, a message is reported in a popup dialog box to prompt the user to start the upload process and the progress of the update will be reported in a popup dialog window. Please allow approximately 5 minutes for the update.



6. To complete the update the system will prompt the user to perform a reboot.



OPTIONAL: If it is not desirable to perform an update at this time then this can be avoided by installing the Software Update Package a second time to ensure all internal devices are reconfigured.

7. Following the power on, check the versions in the settings page to confirm the update was successful (it may be necessary to refresh the page.)
8. Access the Web User Interface network page and check the camera connection status.

Update of ALEXA 35 Live

The LPS-1 update does not update the following devices, which must be updated separately. Update files for these devices must be downloaded individually from the ARRI [Software Packages](#) webpage.

ALEXA 35 Live Update Procedure:

1. Download the update file from the [Software Update Packages for Cameras](#) webpage, double-click the downloaded .zip file to unpack it, or unpack it manually. This will extract two update files to your computer (*.SWU and *.lic.)
2. If not done beforehand, prepare the USB-C memory stick for use with the ALEXA 35 by connecting it to the camera. Then, go to *MENU > Media > Prepare USB Medium...* on the MVF-2 viewfinder menu or the Web Remote and press *CONFIRM*. This will create the required folder structure on the USB-C stick.
3. Connect the USB-C stick to your computer.
Place the downloaded *.SWU file in the *ARRI/ALEXA35/SUP* folder.
Place the downloaded *.lic file in the *ARRI/ALEXA35/LICENSES* folder.
4. The camera Software Update Package includes updates not only for the camera body but also for the MVF-2 viewfinder and the lens mount. Therefore, ensure that the MVF-2 viewfinder and the lens mount are connected to the camera during the update process.
5. Ensure the camera is connected to a power supply or powered by a fully charged battery to prevent power loss during the update.
6. Perform a factory reset on the camera with the menu item *MENU > Setup > Factory Reset...*
7. Connect the USB-C stick to the camera and navigate to the menu item *MENU > System > Update > Update Camera...*
8. Select the SUP file from the list and start the installation.
The MVF-2 as well as the camera side display will show a screen displaying the update progress. Please note, that the update can take up to 20 minutes.
The MVF-2 viewfinder may turn off during the update process and will not provide continuous visual feedback, refer to the camera side display for the update status in this case.
Do not power off or unplug the camera until it has rebooted.
After the update process has finished, a success message is displayed.
9. Ensure that the correct time zone is set in *MENU > System > System Time & Date*.
10. If the MVF-2 viewfinder or lens mount were not connected during the update, the camera will still store the updated software for these devices. The next time they are connected and have an older software version than the one stored in the camera, the camera will prompt you to update them.

In the rare event of an interrupted or failed update the camera may enter a state where the MVF-2 is unresponsive. In this situation, use the side display to enable Wi-Fi, connect to the camera, and reinstall the update using the Web Remote.

Downdating the Camera

It is possible to downgrade an ALEXA 35 to a previous software release. However, please note that ALEXA 35 Live is not compatible with any software version earlier than SUP 2.0.0.

Skaarhoj RCP Update

To update the Blue Pill Enabled Skaarhoj RCP Pro ARRI V2B, please see the instructions on the Skaarhoj Update Software page here:

<https://wiki.skaarhoj.com/books/blue-pill-reactor/page/update-software>

Known Issues in SUP 1.1.1

- The audio matrix page of the Web User Interface allows routing of an audio source to either the left or right earpiece of an Intercom headset. However, this setting does not interact or change with the setting on the Intercom page.

Workaround: When deciding which earpiece to route an audio source to, first set it on the Intercom page and then the corresponding selection on the audio matrix page.

- CRC Errors on channels 2 and 4 on all SDI outs when no source signal is routed to them.

This Firmware issue can be seen when monitoring the embedded audio on the SDI outputs of the FBS. Channels 2 & 4 of the SDI embedded audio may show CRC errors when no audio source is routed to them through the Audio Matrix.

Workaround: Once a signal is routed to these embedded audio channels using the Audio Matrix of the Web User Interface then the CRC errors are cleared.

- FBS SDI Monitor Output video and LPS-1 status overlays are predominantly green in colour when the ALEXA 35 Live camera is set to output 12G 4:4:4 or 3G 4:4:4 formats
- FCA Audio input gain setting is not automatically recalled after a reboot and so the level output at the FBS will be incorrect.

Workaround: By adjusting the gain +/- 1 unit the correct value set prior to reboot will be recalled.

- Return video SDI output of FCA is reported as 1080P60 when the input at the FBS is 1080P59.94 and it is therefore possible that the monitoring device may not recognize the correct format.
- When switching the FCA to EXT power mode, it continues to be powered from the SMPTE fiber cable.
- No SDI video output on HD Out when 1080P standard Genlock is used and the down converter setting for the output is changed from a 3G standard to a 1.5G Standard.

Workaround: Change the reference input to a 1080i tri-level sync standard or use a black and burst signal for genlock.

- Switching between 4:2:2 50fps 2160P color bar pattern generated in FBS to a 4:2:2 12G 50 fps SDI input from ALEXA 35 Live causes unstable SDI outputs.

Workaround: Perform a reboot on the system.

- ALEXA 35 Live SDI Metadata is not available on MON, HD, QL3G Outputs or 3G outputs 1-4 of banks 1 & 2.