

SPARE PARTS FOR/ ERSATZTEILE FÜR  
ELECTRONIC BALLAST  
ELEKTRONISCHES VORSCHALTGERÄT  
6/12 EB UNIVERSAL



Please click here to get a Lighting service contact overview:

Klicken Sie bitte hier um eine Übersicht unserer Service-Kontakte zu erhalten :

[www.arri.de](http://www.arri.de)

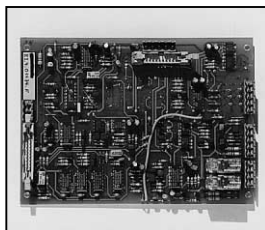


04 - 2009

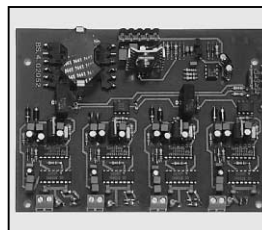
**NOTE: WHEN ORDERING QUOTE PART NUMBER    BEMERKUNG: BEI BESTELLUNG IDENT.-NR. ANGEBEN**



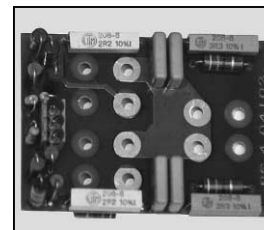
L4.82502.E  
Rubber foot-set cpl. (4 pieces)  
Gummifuß-Set kpl. (4 Stück)



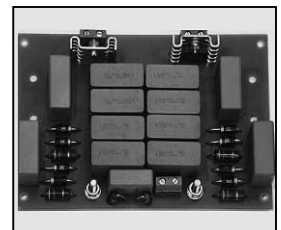
L4.82605.E  
Control board  
Regelkarte



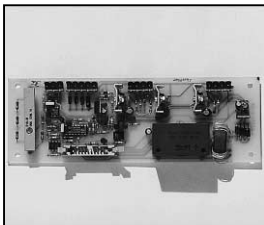
L4.82548.E  
LF-base drive board  
NF-Ansteuerung



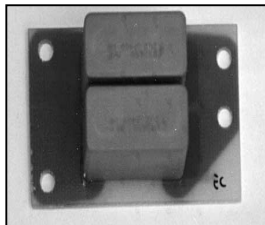
L4.82550.E  
HF-snubber board  
HF-Entlastung



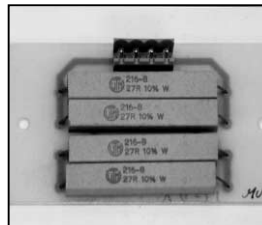
L4.82552.E  
LF-snubber board  
NF-Entlastung



L4.82606.E  
HF-gate drive board  
HF-Gate-Ansteuerung



L4.82559.E  
HF-capacitor board  
HF-Kondensator-Platine



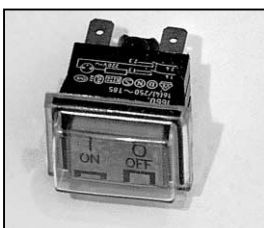
L4.82560.E  
Start resistor board  
Startwiderstand-Platine



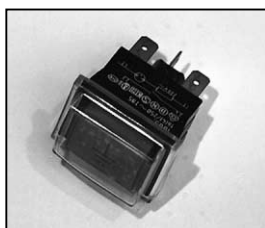
L4.82532.E  
Power FET module  
Power FET Modul



L4.82533.E  
Diode module  
Diodenmodul



L4.82513.E  
Mains switch  
Netzschalter



L4.82514.E  
Earth test switch  
Erdtaster



L4.82608.E  
Input capacitor  
Ladeelko



L4.82607.E  
IGBT-Module  
IGBT-Modul



L4.75786.E  
Veam output connector  
(female)  
Veam Output Stecker  
(Buchsenkontakt)