

**ELECTRONIC BALLAST  
ELEKTRONISCHES VORSCHALTGERÄT  
6000 EB**



*Please click here to get a Lighting service contact overview:*

*Klicken Sie bitte hier um eine Übersicht unserer Service-Kontakte zu erhalten :*

**www.arri.de**

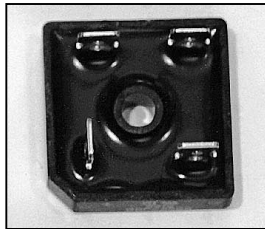


04 - 2009

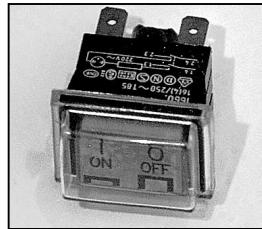
**NOTE: WHEN ORDERING QUOTE PART NUMBER    BEMERKUNG: BEI BESTELLUNG IDENT.-NR. ANGEBEN**



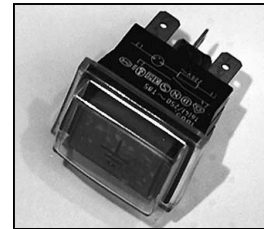
**L4.82502.E**  
Rubber foot-set cpl. (4 pieces)  
Gummifuß-Set kompl. (4 Stück)



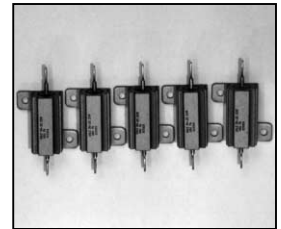
**L4.82510.E**  
Input rectifier  
Netzgleichrichter



**L4.82513.E**  
Mains switch  
Netzschalter



**L4.82514.E**  
Earth test switch  
Erdtaster



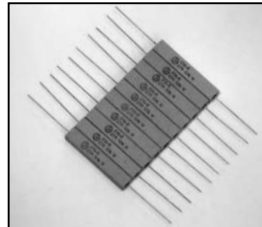
**L4.82517.E**  
Start resistor-set (5 pieces)  
Startwiderstand-Set (5 Stück)  
(EB – to/bis Ser. Nr. 602015091)



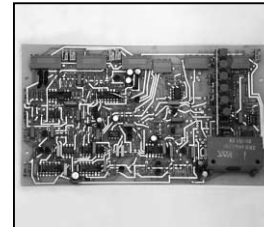
**L4.82532.E**  
Power FET module  
Power FET Modul  
TSD 4 M 450 V



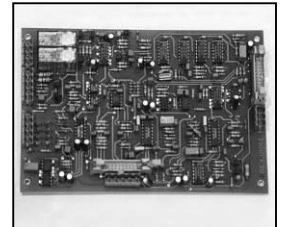
**L4.82533.E**  
Diode module byt 261 PIV 800  
Diodenmodul Byt 261 PIV 800



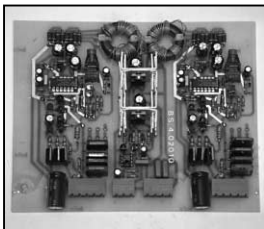
**L4.82538.E**  
Ignition resistor-set (10 pieces)  
Zündwiderstand-Set (10 Stück)  
(EB – to/bis Ser. Nr. 602015091)



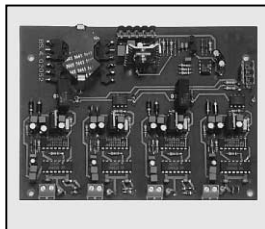
**L4.82545.E**  
Control board  
Regelkarte  
(EB – to/bis Ser. Nr. 602015091)



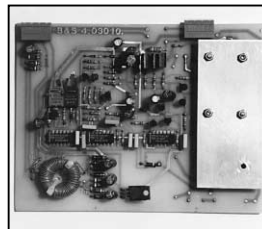
**L4.82546.E**  
Control board  
Regelkarte  
(EB – from/ab Ser. Nr. 603000193)



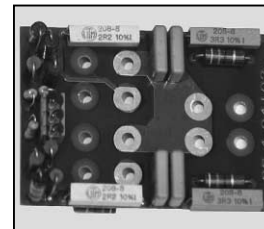
**L4.82547.E**  
LF-base drive board  
NF-Ansteuerung  
(EB – to/bis Ser. Nr. 602015091)



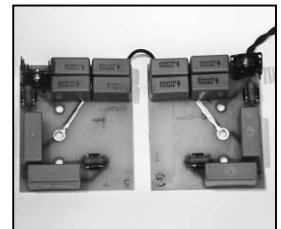
**L4.82548.E**  
LF-base drive board  
NF-Ansteuerung  
(EB – from/ab Ser. Nr. 603000193)



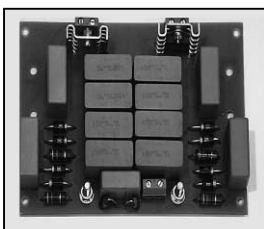
**L4.82549.E**  
HF-base drive board  
HF-Ansteuerung  
(EB – to/bis Ser. Nr. 602015091)



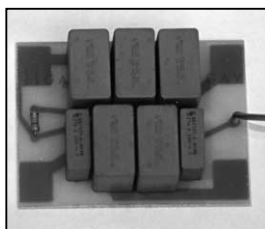
**L4.82550.E**  
HF-snubber board  
HF-Entlastung  
(EB – from/ab Ser. Nr. 603000193)



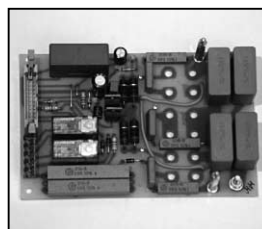
**L4.82551.E**  
LF-snubber board cop. (left + right)  
NF-Entlastung kpl. (links + rechts)  
(EB – to/bis Ser. Nr. 602015091)



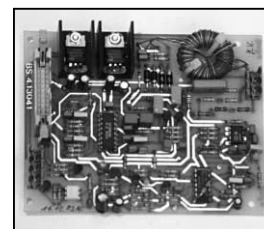
**L4.82552.E**  
LF-snubber board cop.  
NF-Entlastung  
(EB – from/ab Ser. Nr. 603000193)



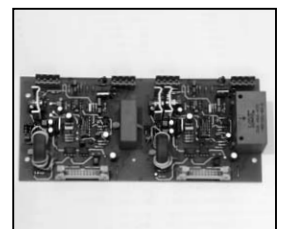
**L4.82553.E**  
RF-line filtering board  
RF-Netzfilter  
(EB – from/ab Ser. Nr. 603000193)



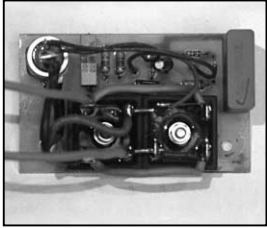
**L4.82554.E**  
Mother board act. line filter  
Basisplatine akt. Netzfilter  
(EB – to/bis Ser. Nr. 602015091)



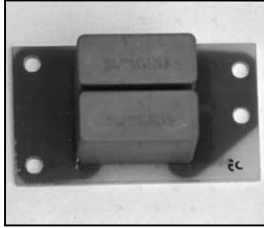
**L4.82555.E**  
Control board act. line filter  
Regelkarte akt. Netzfilter  
(EB – to/bis Ser. Nr. 602015091)



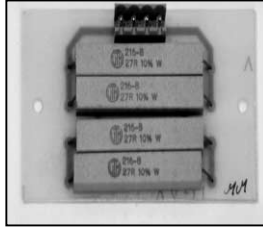
**L4.82556.E**  
HF-Gate-drive board  
HF-Gate-Ansteuerung  
(EB – from/ab Ser. Nr. 603000193)



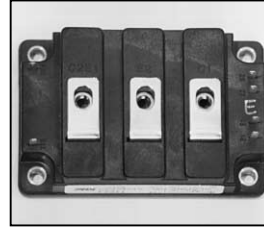
**L4.82557.E**  
Overload protect board  
Überspannungsschutz-Schaltung  
(EB – to/bis Ser. Nr. 602015091)



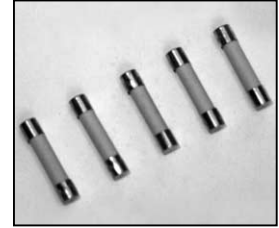
**L4.82559.E**  
HF-capacitor board  
HF-Kondensator-Platine  
(EB – from/ab Ser. Nr. 603000193)



**L4.82560.E**  
Start resistor board  
Startwiderstand-Platine  
(EB – from/ab Ser. Nr. 603000193)



**L4.82561.E**  
Transistor module  
Transistormodul  
(EB – to/bis Ser. Nr. 602015091)



**L4.82562.E**  
Fuse-set (5 pieces)  
Feinsicherung-Set (5 Stück)  
(EB – from/ab Ser. Nr. 603000193)



**L4.82563.E**  
IGBT-Module  
IGBT-Modul  
(EB – from/ab Ser. Nr. 603000193)



**L4.75748.E**  
Veam output connector  
(female)  
Veam Output Stecker  
(Buchsenkontakt)