

SPARE PARTS FOR / ERSATZTEILE FÜR

ELECTRONIC BALLAST ELEKTRONISCHES VORSCHALTGERÄT 4000 EB · 4000 U EB · 2,5/4 U EB



ARNOLD & RICHTER GMBH & CO BETRIEBS KG, PULVERMÜHLE, D-83071 STEPHANSKIRCHEN
CINE TECHNIK TELEFON: (08036) 3009-3084 FAX: (08036) 3009-3075

ARRI LIGHTING SOLUTIONS GMBH ERNST-AUGUSTIN-STRASSE 12, D-12489 BERLIN
TELEFON: (030) 678-233-0 FAX: (030) 678-233-99

ARRI (GB) LIMITED 2 HIGHBRIDGE, OXFORD ROAD, UXBRIDGE, MIDDLESEX UB8 1LX
TELEPHONE: (0) 1895-457-000 FAX: (0) 1895-457-001

ARRI INC. 617 ROUTE 303, BLAUVELT, NY 10913-1109
NEW YORK OFFICE TELEPHONE: (845) 353-1400 FAX: (845) 425-1250

ARRI INC. 600 NORTH VICTORY BLVD., BURBANK, CA 91502-1639
BURBANK OFFICE TELEPHONE: (818) 841-7070 FAX: (818) 848-4028

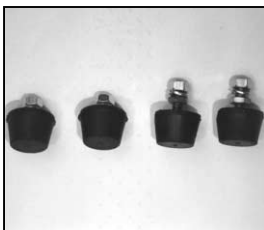
ARRI CANADA LTD. 415 HORNER AVENUE, UNIT 11 ETOBICOKE, ONTARIO M8W 4W3
TELEPHONE: (416) 255-3335 FAX: (416) 255-3399

ARRI ITALIA S.R.L. VIALE EDISON, 318 - 20099 SESTO SAN GIOVANNI (MI)
TELEPHONE: (02) 2622 7175 FAX: (02) 242 1692

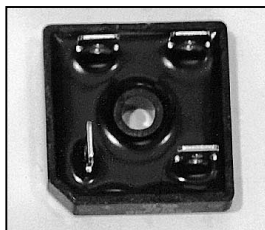


03 - 2007

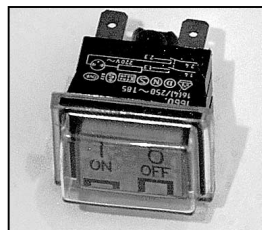
NOTE: WHEN ORDERING QUOTE PART NUMBER **BEMERKUNG: BEI BESTELLUNG IDENT.-NR. ANGEBEN**



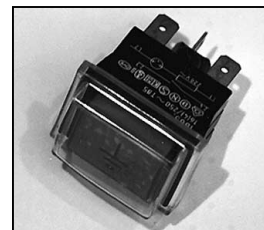
L4.82502.E
Rubber foot-set cpl. (4 pieces)
Gummifuß-Set kompl. (4 Stück)



L4.82510.E
Input rectifier
Netzgleichrichter



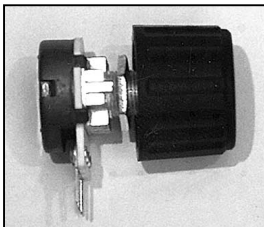
L4.82513.E
Mains switch
Netzschalter



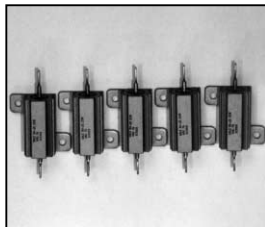
L4.82514.E
Earth test switch
Erdtaster



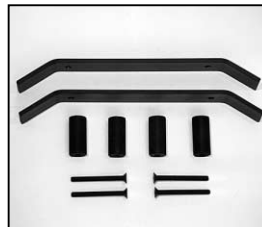
L4.82515.E
Low noise switch with knob
Low Noise-Schalter
mit Drehknopf



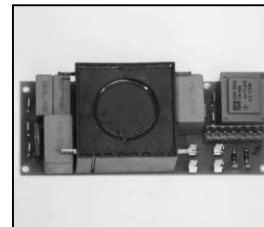
L4.82516.E
Dimm pot with knob
Dimmpotentiometer
mit Drehknopf



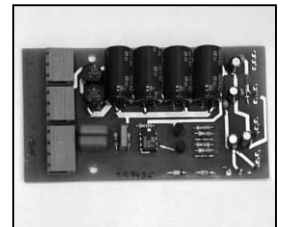
L4.82517.E
Start resistor-set (5 pieces)
Startwiderstand-Set (5 Stück)



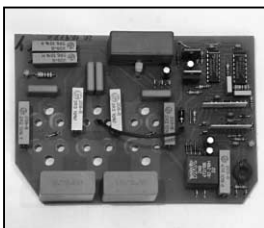
L4.82526.E
Front handle-set cpl.
Frontgriff-Set kpl.



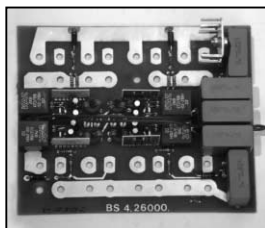
L4.82528.E
RF-line filtering board
RF-Netzfilter



L4.82529.E
Electr. voltage supply board
Elektr. Spannungsversorgung



L4.82530.E
HF-converter board
HF-Wandlerkarte



L4.82531.E
LF-converter board
NF-Wandlerkarte



L4.82532.E
Power FET module
Power FET Modul
TSD 4 M 450 V



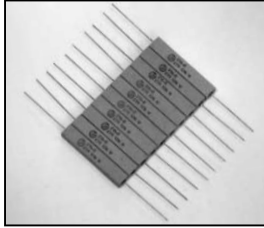
L4.82533.E
Diode module byt 261 PIV 800
Diodenmodul Byt 261 PIV 800



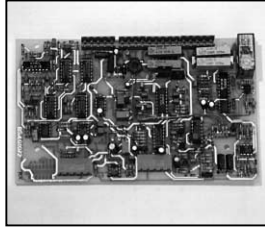
L4.82534.E
HF-choke (2 terminals)
HF-Drossel (2 Klemmen)



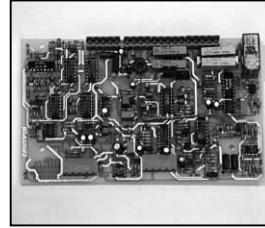
L4.82537.E
Input capacitor 1800 MF/400 V
Ladeelko 1800 MF/400 V



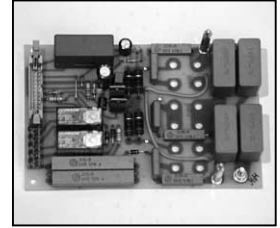
L4.82538.E
Ignition resistor-set (10 pieces)
Zündwiderstand-Set (10 Stück)



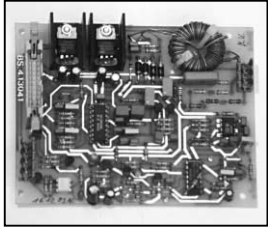
L4.82539.E
Control board (for EB 4000 U)
Regelkarte (für EB 4000 U)



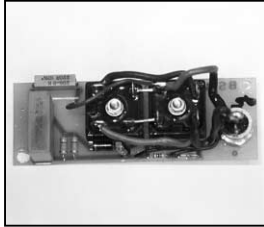
L4.82540.E
Control board (for EB 4000)
Regelkarte (für EB 4000)



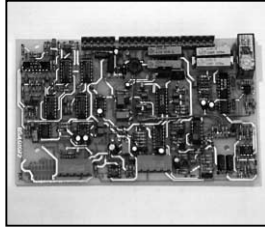
L4.82541.E
Mother board act. line filter
Basisplatine akt Netzfilter



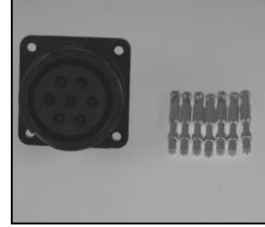
L4.82542.E
Control board act. line filter
Regelkarte akt Netzfilter



L4.82543.E
Overload protect board
Überspannungsschutz-
Schaltung



L4.82544.E
Control board (for EB 2,5/4 U)
Regelkarte (für EB 2,5/4 U)



L4.83858.E
Veam output connector
(female)
Veam Output Stecker
(Buchsenkontakt)