



ARRI Stage London

VIRTUAL PRODUCTION & MULTI-PURPOSE STUDIO





Welcome to one of Europe's largest fully serviced virtual production facilities

Production at full volume

Designed with impressive versatility at its core, our 708 m² facility in Uxbridge, West London, combines a state-of-the-art LED volume with the latest media servers and ICVFX technologies, while camera, grip, and lighting packages are available on site from ARRI Rental.

Scalable solutions

Catering to different budgets and production needs, our team can tailor the studio's configuration to meet your specific requirements. This versatile, scalable approach ensures maximum value without compromising quality.

Promoting sustainable production

Working at ARRI Stage London helps clients meet sustainability goals. By not traveling to different locations and maximizing time and efficiency on set thanks to consistent daylight and weather conditions, a production's carbon footprint can be significantly reduced.

The ultimate creative environment

ARRI has partnered with Video Screen Services (VSS) to provide a cutting-edge, purpose-built virtual production and multi-purpose use stage.

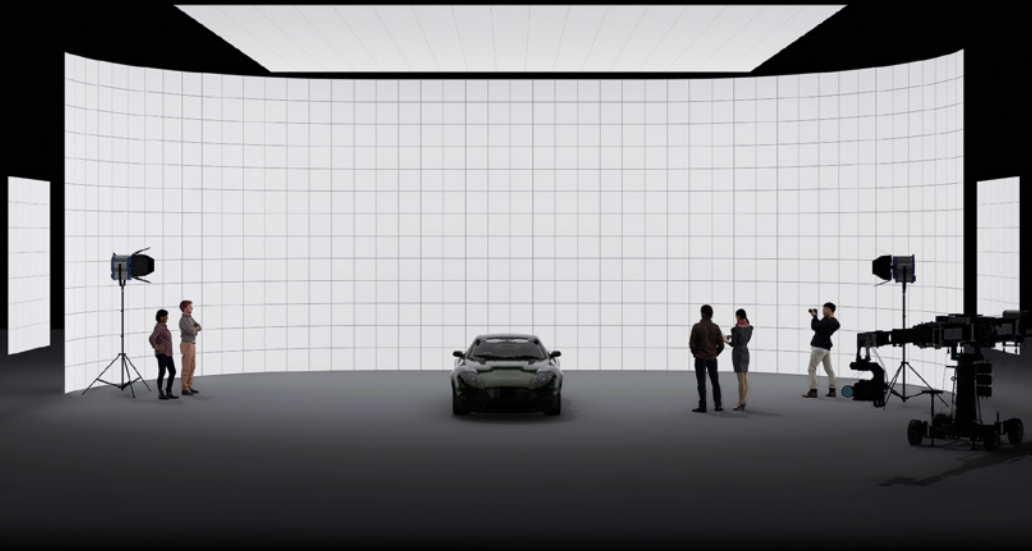
The impressive facility boasts the UK's tallest fixed in-camera virtual production screen, standing at 6.5 meters, and a super high-resolution 1.5 mm pixel pitch ceiling for high-definition reflections. Powerful, high-specification media servers running Nuke Stage film-grade playback software, along with Vicon camera tracking, all combine to enable real-time virtual and mixed reality productions.



ARRI Stage London
POWERED BY VSS

“The 180” with ceiling

Ideal for single or multi-camera setups, this cost-effective solution delivers impressive scale within a full-service facility.



TECHNICAL DETAILS

Main Wall	24 m x 6.5 m ROE BP 2.8 mm Brightness 1,500 nits
LED Ceiling	10 m x 5 m AOTO 1.5 mm Brightness 1,100 nits
LED Wild Walls	2 m x 3 m ROE Carbon CB5
LED Processing	4K Brompton SX40
Server Technology	2D / 2.5D – high-spec server system powered by Nuke stage 3D – Unreal Engine playback
Camera Tracking	Vicon camera tracking
Rigging	Steel ceiling grid with high load capacity – fully motorised LED ceiling and lighting trusses
Lighting	Lighting package available on request – POA
Inclusive Facilities	Fully furnished production office space, makeup and wardrobe rooms, serving kitchen with dining area, and two luxury green rooms

“The J” with ceiling

Designed to expand creative scope by accommodating larger sets or multi-set applications.

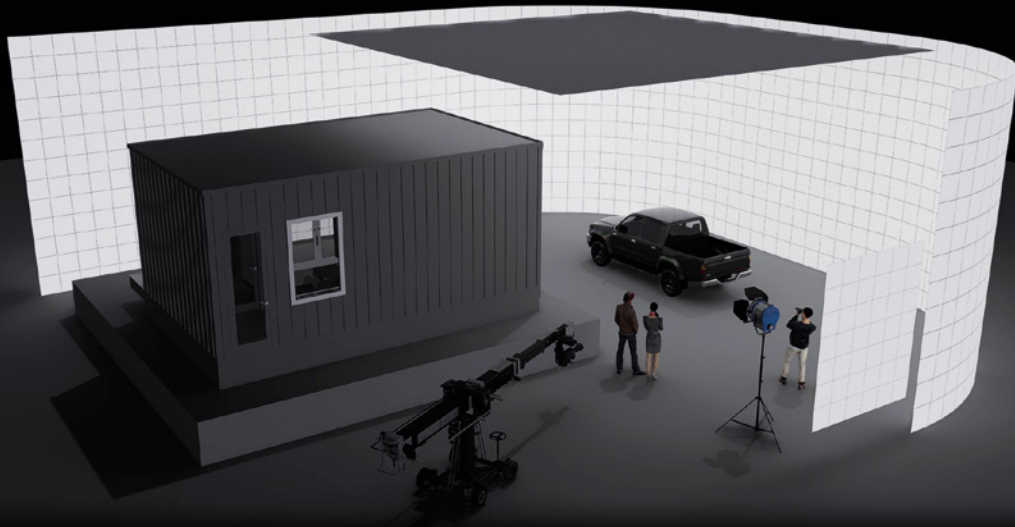


TECHNICAL DETAILS

Main Wall	36 m x 6.5 m ROE BP 2.8 mm Brightness 1,500 nits
LED Ceiling	10 m x 5 m AOTO 1.5 mm Brightness 1,100 nits
LED Wild Walls	2 m x 3 m ROE BP 2.8mm (2of) Brightness 1,500 nits
LED Processing	4K / Brompton SX40
Server Technology	2D / 2.5D – high-spec server system powered by Nuke stage 3D – Unreal Engine playback
Camera Tracking	Vicon camera tracking
Rigging	Steel ceiling grid with high load capacity – fully motorised LED ceiling and lighting trusses
Lighting	Lighting package available on request – POA
Inclusive Facilities	Fully furnished production office space, makeup and wardrobe rooms, serving kitchen with dining area, and two luxury green rooms

“The J” with extended ceiling

An extended ceiling provides wider coverage and immersive scale for larger sets or multi-set applications.



TECHNICAL DETAILS

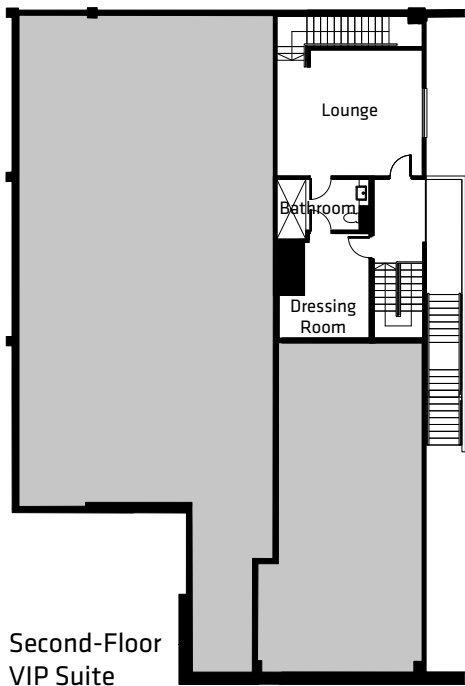
Main Wall	36 m x 6.5 m ROE BP 2.8 mm Brightness 1,500 nits
LED Ceiling	10 m x 10 m AOTO 1.5 mm Brightness 1,100 nits
LED Wild Walls	2 m x 3 m ROE BP 2.8 mm (2of) Brightness 1,500 nits
LED Processing	4K / Brompton SX40
Server Technology	2D / 2.5D – high-spec server system powered by Nuke stage 3D – Unreal Engine playback
Camera Tracking	Vicon camera tracking
Rigging	Steel ceiling grid with high load capacity – fully motorised LED ceiling and lighting trusses
Lighting	Lighting package available on request – POA
Inclusive Facilities	Fully furnished production office space, makeup and wardrobe rooms, serving kitchen with dining area, and two luxury green rooms

Stage key features

- Dedicated 708 sq m (7,621 sq ft) blacked-out stage with sound-dampened ceiling.
- Steel ceiling grid with high load capacity, suitable for wire work and complex rigging.
- IP-based lighting control network with ARRI LED fixtures mounted to motorised lighting truss.
- Production office.
- Serving kitchen and large crew dining area.
- Styling/dressing room.
- Hair/makeup room with three styling stations and backwash sink.
- Green room overlooking the stage floor and volume.
- Dedicated second-floor VIP suite, featuring en-suite bathroom, and dressing room
- 3.6 m wide x 4.5 m high drive-in roller shutter access.
- Camera and grip equipment packages, as well as supplementary lighting available from ARRI Rental.
- Complimentary high-speed WiFi throughout.
- Storage space and lockers.
- COVID-compliant environment, featuring air quality management and filtration system.
- Washroom facilities.
- Large outdoor covered seating area.
- Parking for production vehicles to the rear of the stage.
- On-site crew parking.

Comfortable production spaces

Complementing the stage is an office space on the ground floor, with a further suite of furnished production accommodation located over the first and second floors.



SECOND-FLOOR VIP SUITE

Lounge: 5.3 m x 4.6 m (17.39 ft x 15.09 ft)
Floor to ceiling window overlooking the volume.
En-suite bathroom: 3 m x 1.8m (9.84 ft x 5.9 ft)
Dressing room: 3.3 m x 3.8 m (10.83 ft x 12.47 ft)

GROUND-FLOOR PRODUCTION OFFICE

4.9 m x 2.2 m (16.08 ft x 7.22 ft)





First-floor green room



Dining area

FIRST-FLOOR GREEN ROOM

5 m x 4.5 m (16.4 ft x 14.76 ft)

Floor to ceiling window overlooking the volume.

DINING AREA

9.3 m x 9.5 m (30.51 ft x 31.71 ft)

HAIR AND MAKEUP

4.7 m x 5.8 m (15.42 ft x 19.03 ft)

Provides a backwash sink and three styling stations. Each station features colour temperature control lighting, storage, and fully adjustable chair.



Hair and makeup

STYLING/DRESSING ROOM

3 m x 5.8 m (9.84 ft x 19.03 ft)

Fitted with two built-in changing cubicles.



Styling/dressing room

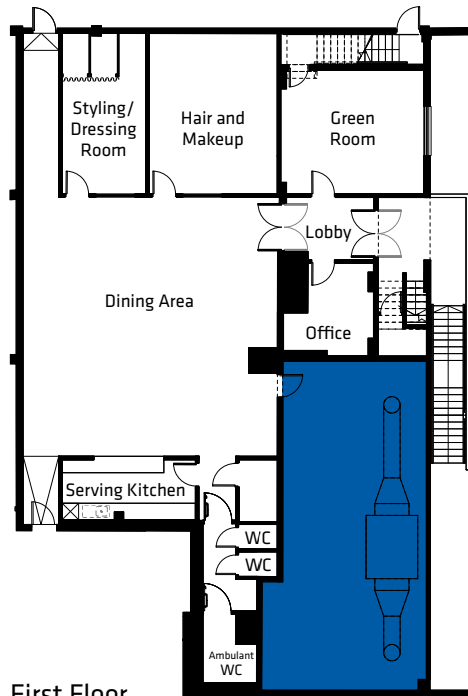


Serving kitchen

SERVING KITCHEN

4.9 m x 2.2 m (16.08 ft x 7.22 ft)

Equipped with fridge/freezer and microwave. Adjacent pot wash houses a dishwasher, washing machine, and tumble dryer.



First Floor

In-camera VFX scenes filmed at ARRI Stage London



FEATURES & HETV

Back in Action

The Peripheral

The Agency

A Spy Among Friends

Knuckles

The Rising

Flite

Pistol

Luther: The Fallen Sun

COMMERCIALS & CORPORATE

Mercedes-AMG PETRONAS F1 Team “Grand Prixviews” by WING London

Uber One “Best Friends” by Mother London and O Positive

BP “Life’s Journeys” by Ogilvy and Hogarth Worldwide

Chemical Brothers “Live Again” by Outsider

Amazon Business “Bloom” by Joint and Outsider

ARRI Stage London
POWERED BY VSS

We look forward to hearing from you



Contact

Michael Apostolou

ARRI Stage Manager
mapostolou@arri-gb.com

Nic Maag

(VSS) Video Screen Services
nic@videoscreenservices.com

Located at ARRI's UK premises in Uxbridge, West London, within a secure gated business park, ARRI Stage London is close to the A40, M25 and M4, offering excellent links to central London, the national motorway network, and Heathrow airport. The stage is also just a short walk from Uxbridge Tube station, which offers access to the Metropolitan and Piccadilly lines.

ARRI Stage London | Highbridge Industrial Estate | Oxford Rd | Uxbridge UB8 1LX

