

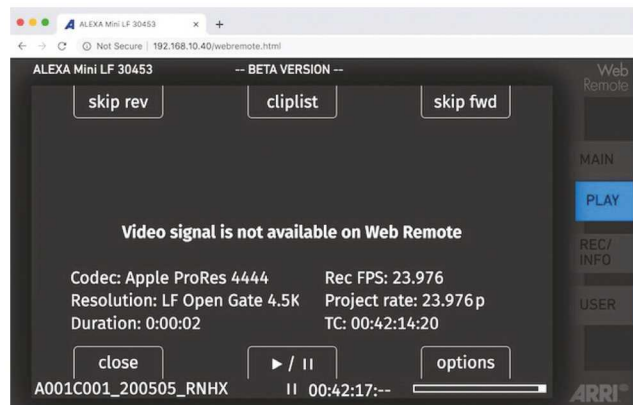
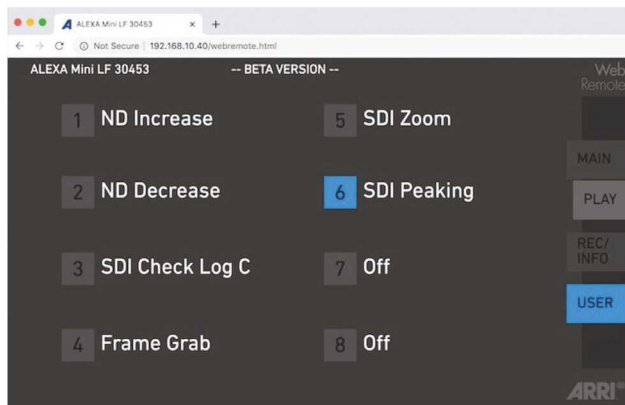
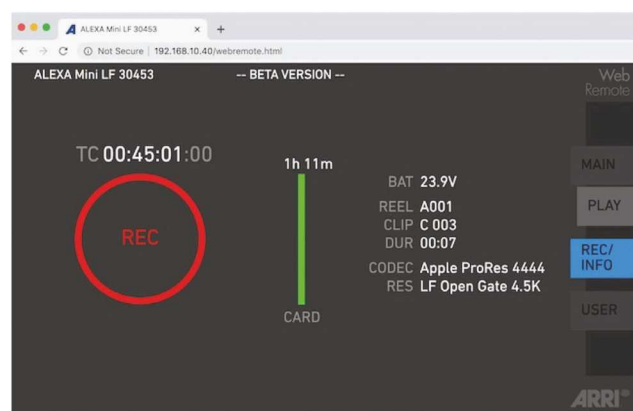
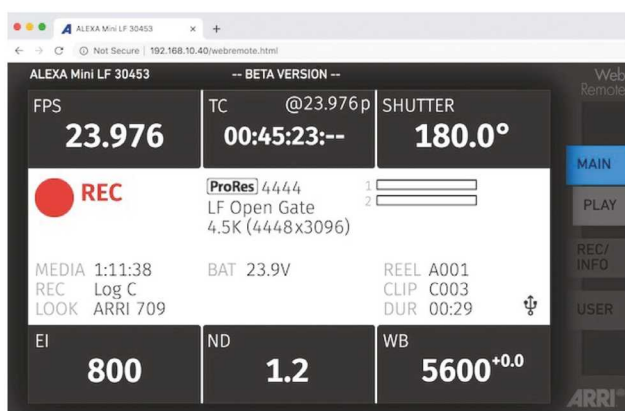
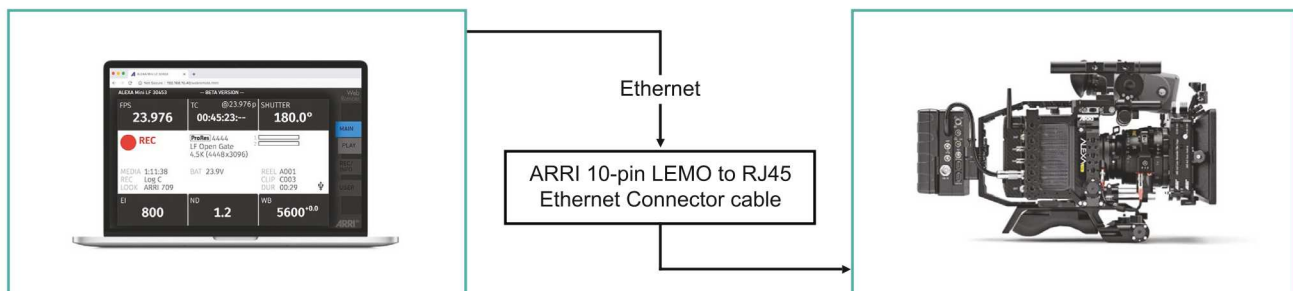
Maintain Technical and Creative Control of ARRI Cameras Regardless of your Location

TECHNICAL INFORMATION

Date: 16th November 2020

Maintain Technical and Creative Control of ARRI Cameras Regardless of your Location

ARRI Mini and Mini LF can be controlled over cabled Ethernet using ARRI 'Web Remote'. 100ft or longer cables.



What functions can you control via web remote:

- Run/Stop and Playback (*No Video Signal in Web Remote)
- Frames per second
- Assignable Buttons (Pre-Programmed)
- Exposure Index
- Shutter Angle
- ND Filters
- Look/LUT Select
- White Balance
- Reel number
- Timecode

* Media cannot be formatted

Setup:

Connect Ethernet cable between laptop and ARRI Camera.

Note: In addition to the ethernet cable an ARRI 10-pin LEMO to RJ45 Ethernet Connector cable K2.72021.0 is required

ARRI Camera Setup:

System > Network/ Wifi > LAN IP Mode > **Static**

System > Network/ Wifi > LAN Static IP > Change IP address to **192.168.0.1**

System > Network/ Wifi > LAN Static Subnet > Ensure subnet mask is **255.255.255.0**

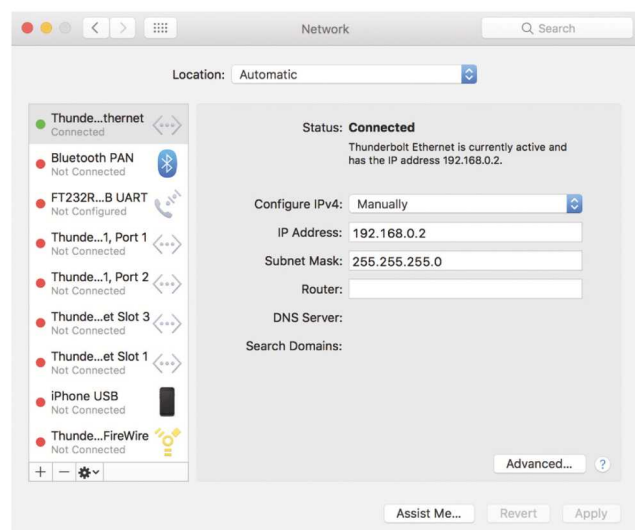
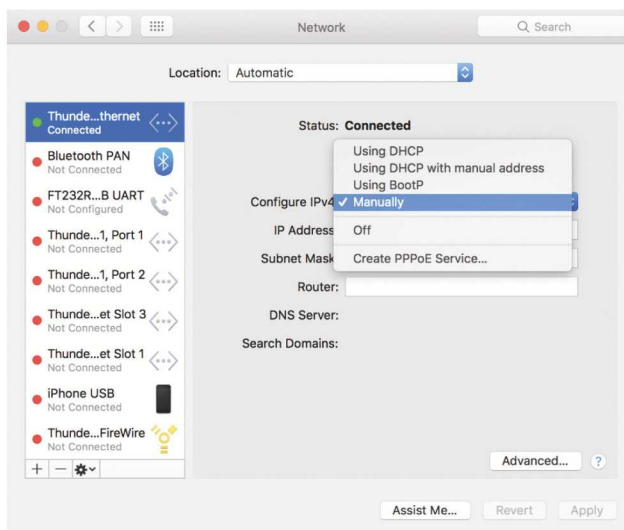
Laptop Setup:

System preferences > Network > Find the ethernet port or adapter > Configure IPv4 > Select **Manually**

Set the IP Address to **192.168.0.2** (last digit should be sequential one number higher than camera IP)

Set the Subnet mask to **255.255.255.0**

Click **“Apply”** to save settings.



Copy the 'Camera' IP Address (**192.168.0.1**) into a web browser.

Currently ARRI only supports Chrome and Firefox.

The ARRI Web Remote panel will open and will be connected to the camera.