



ALEXA LF Software Update Package 4.3

for ALEXA LF cameras (SUP_AlexaLF_4.3_44087)

RELEASE NOTES

April 1, 2020

A. Introduction

We hereby announce the availability of Software Update Package LF SUP 4.3 for the ALEXA LF camera. This update includes useful enhancements to the usability of the monitoring overlays and the use of the ALEXA LF camera with ARRI Rental DNA and Cooke /i lenses.

This document describes changes to ALEXA LF cameras that are part of ALEXA LF SUP 4.3 in contrast to ALEXA LF SUP 4.2.

New Features and Changes Overview

A more detailed description of each feature is given in the section 'Changes and New Features'.

- **Improved usability of MAGNIFICATION monitoring overlay**
 - Icons instead of orange line/outline
- **Improved usability of the ALEXA LF with certain lenses**
 - Recognition of ARRI Rental DNA lenses, improved recognition of Cooke /i lenses
 - Improvements to recording of ARRI Rental DNA lens metadata

Upgrade Notes

LF SUP 4.3 Requires LF SUP 3.0 Software & Hardware Upgrade

LF SUP 4.3 should only be installed on ALEXA LF cameras that have previously undergone the "ALEXA LF 3.0 Software & Hardware Upgrade", which can be performed free-of-charge by ARRI service. The ALEXA LF 3.0 upgrade includes the upgrade of an electronics board (ACDA3 gets exchanged for ACDA4), and LF SUP 4.0, 4.1, 4.2 and 4.3 require the ACDA4 board. LF SUP 4.3 will not run on ALEXA LF cameras with the older ACDA3 board installed (any camera running LF SUP 2.0 or LF SUP 2.1).

Upgrade Paths

- If your ALEXA LF has LF SUP 2.0 or 2.1: contact ARRI Service to schedule your free upgrade to "ALEXA LF 3.0 Software and Hardware". ARRI service will then also install LF SUP 4.3.
- If your ALEXA LF has LF SUP 3.0, 4.0, 4.1 or 4.2: Download LF SUP 4.3 and install.

Downgrading

Once LF SUP 4.3 is installed, it is possible to revert back to LF SUP 4.0, LF SUP 4.1 and LF SUP 4.2, but not to LF SUP 3.0 or older. However, we do not recommend to downgrade to SUP versions prior to LF SUP 4.3.

Accessing SXR Capture Drives

To access footage from an SXR Capture Drive that was recorded with an ALEXA LF or ALEXA SXT, use a Codex dock and the Codex Device Manager software. Neither a license nor the Codex Virtual File System (VFS) is required. If, however, you want to use the VFS, you can still get a full Production Suite license from Codex.

The Codex Device Manager presents the Capture Drive mounted in a Codex dock on the desktop as a mounted drive named by camera roll. If you have multiple docks connected, multiple drives will show up with different roll numbers. The Codex Device Manager can eject, load, format and erase a magazine. ARRIRAW or ProRes files appear as expected.

Download the Codex Device Manager from <https://codex.online/software>.

ALEXA LF and ALEXA SXT footage should not be accessed via the older DTS-3.0 software, as it does not properly support ARRIRAW data from these cameras.

Software Compatibility Notes

An overview of postproduction tools that support files recorded with ALEXA LF cameras can be found in the download section of the [ALEXA LF SUP 4.3 webpage](#).

Table of Contents

A. Introduction	2
New Features and Changes Overview	2
Upgrade Notes	2
Accessing SXR Capture Drives	2
Software Compatibility Notes	2
B. Changes and New Features	4
Accessories	4
Imaging.....	4
Image Processing.....	4
Inputs.....	4
Lenses	4
Look Management.....	4
Metadata	4
Monitoring.....	4
Other.....	5
Outputs	6
Playback.....	6
Recording	6
Recording Media	6
Remote Control	6
Sync.....	6
Updating	6
Usability.....	6
C. Known Issues	7
Accessories	7
LDS/LDA	7
Metadata	7
Monitoring.....	8
Other.....	8
Recording	9
Recording Media	9
Remote Control	9
SUP Update	9
Sync.....	9
Usability.....	10
D. Updating Instructions	11
Download and Naming Convention	11
Camera Update Procedure via SD Card.....	11
Camera Update Procedure using a Web Browser on your Computer	12
Updating an Electronic Viewfinder EVF-1 or EVF-2	13

B. Changes and New Features

Accessories

No changes.

Imaging

No changes.

Image Processing

No changes.

Inputs

No changes.

Lenses

Recognition of ARRI Rental DNA lenses

With LF SUP 4.3, ARRI Rental DNA lenses with LDM_FF 1.24 firmware will be recognized on ALEXA LF cameras. Furthermore, serial numbers of ARRI Rental DNA lenses will be recorded as metadata.

Improved recognition of Cooke /i lenses

With LF SUP 4.3, recognition of Cooke /i lenses has been improved.

Look Management

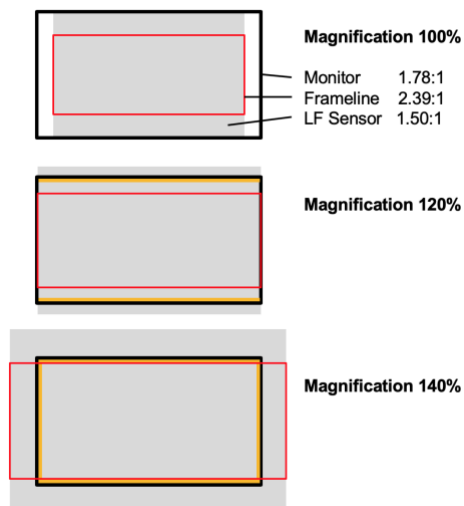
No changes.

Metadata

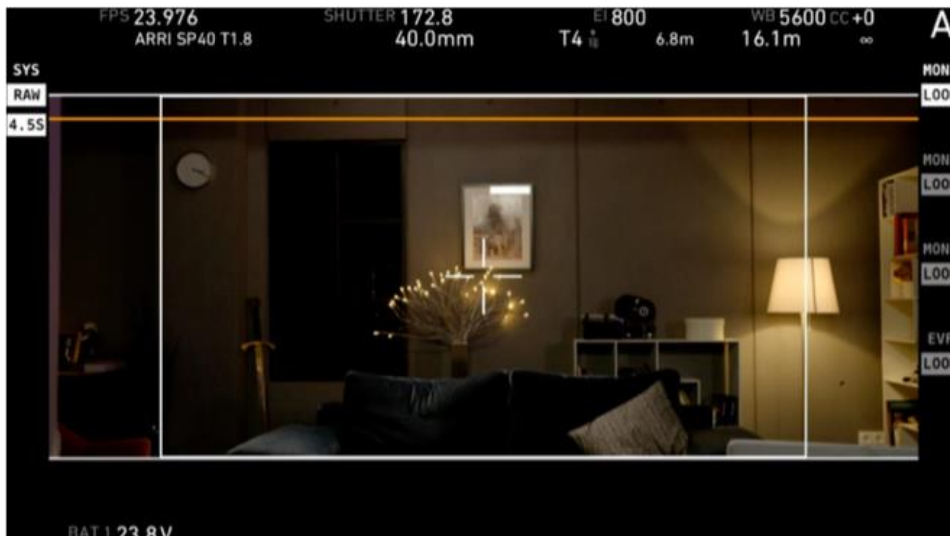
No changes.

Monitoring




With Software Update Packages prior to ALEXA LF SUP 4.3, an orange line will be shown at the frame boundaries of the monitoring image, if less than the recorded area is shown on the EVF or on the MON OUT image, when the MAGNIFICATION feature is used as shown in the graphic below.

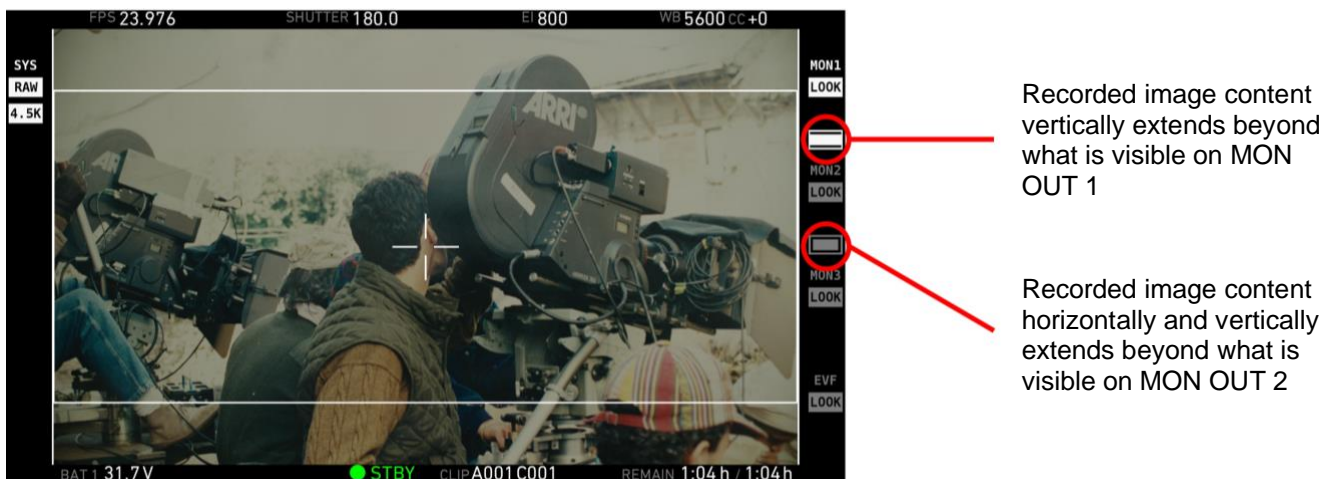


This is a useful and popular feature, but the orange line could get distracting when shooting on low light levels and would also appear unintentionally inside the frame when LDS info was set to ON (see below).



From ALEXA LF SUP 4.3 on, if less than the recorded area is shown on the EVF or on the MON OUT image, the orange line will not be shown any longer. Instead, new warning icons will be shown in the status area to the right of the image. See the table and image below for details.

	Indicates that the recorded image content horizontally (left and right) extends beyond what is visible on the output.
	Indicates that the recorded image content vertically (above and below) extends beyond what is visible on the output.
	Indicates that the recorded image content horizontally and vertically extends beyond what is visible on the output.



Other

No changes.

Outputs

No changes.

Playback

No changes.

Recording

No changes.

Recording Media

No changes.

Remote Control

No changes.

Sync

No changes.

Updating

No changes.

Usability

No changes.

C. Known Issues

Accessories

Motor values for Cabrio lens can seemingly be changed

With the Fujinon Cabrio 85-300 ENG lens and LCUBE CUB-2 connected, the motor side, torque, and teeth count values can be changed in the menu screen but will not actually change the parameters.

Battery switch with Battery Adapter Back BAB-HV/BAB-HG

When attaching an on-board battery to the Battery Adapter Back BAB-HV/BAB-HG on a camera that is running on mains power supply (BAT1), one should wait at least 3 seconds or until home display of BAT2 switches to the percentage display before unplugging the mains power. Otherwise it is possible that the camera turns off.

Bebob VCINE/ACINE on-board battery charging

Bebob recommends: After power-intensive use (high fps, many accessories) of Bebob VCINE/ACINE on-board batteries on the Battery Adapter Back BAB-HV/BAB-HV on ALEXA LF cameras, one should wait at least 30 minutes before putting the battery on a charger.

LDS/LDA

LDS Not Working, "Warning: LDS failure. Please reboot."

It may happen upon booting the camera, that the LDS functionality does not work, and the camera issues an error stating "Warning: LDS failure. Please reboot."

Signature Prime 75 focus displayed in wrong unit

The focus distance of the Signature Prime 75mm/T1.8 (with imperial unit focus scale) is displayed as feet + inch value instead of the engraved, inch-only, value for focus distances below 3ft. The displayed distance value is correct but the units are different.

Metadata

Wrong Metadata in motion picture ARRIRAW for 1.65x and 1.80x lens squeeze

At this point in time, the two new lens squeeze factors (1.65x and 1.80x) will not be recorded in ARRIRAW motion picture metadata. Instead, the motion picture ARRIRAW metadata will list a lens squeeze factor of 1.0 (however, the 1.25x, 1.30x, 1.50x and 2.00x squeeze factors will be recorded properly in metadata and will be properly listed).

The ARRIRAW Software Developer Kit (SDK) 6.0 (planned for Q4 2018) and later and the ARRIRAW Converter 4.0 (planned for Q4 2018) and later contain a new feature that allows for the manual entry of a de-squeeze ratio, which must be used for footage shot with 1.65x and 1.80x squeeze lenses.

Please note that any lens squeeze factor that is set will be recorded properly in ProRes metadata, and the Apple QuickTime player (and some third-party QuickTime players) will automatically de-squeeze the image correctly. Also, any lens squeeze factor that is set will be recorded properly in ARRIRAW frame grabs, and the ARRIRAW Software Developer Kit (SDK) 6.0 and later and the ARRIRAW Converter 4.0 and later will automatically de-squeeze the image correctly.

The current previous version of the ARC (3.5.3) will also work, with the following exceptions:

1. ARRIRAW moving image files that have been recorded with the lens squeeze factor set to 1.65x or 1.80x will erroneously be shown to have the lens squeeze factor of 1.00x. Use a third-party tool for de-squeezing.
2. ARRIRAW frame grabs that have been recorded with the lens squeeze factor set to 1.65x or 1.80x are not supported.

Lens serial numbers not recorded

Lens serial number values higher than 4294967295 will not be recorded in metadata.

Lens serial numbers not recorded

Alphanumeric lens serial numbers will not be recorded in metadata.

Monitoring

Wireless video transmission image artifact

On rare occasions will the red and blue colors be reversed for the wireless video.

Wireless video artifacts when peaking is on

On rare occasions an image artifact can occur when using wireless video with peaking on.

No frame border left & right in LF 2.39:1 sensor mode

In LF 2.39:1 sensor mode, on the EVF and the MON OUT outputs, there is a frame border visible at the top and bottom of the frame, but not at the left and right sides.

MON OUTs lose sync after frame rate change

When the frame rate of one MON OUT is changed, it cannot be guaranteed that all MON OUTs are in sync with each other.

Magnification artifacts

Some magnification factors may lead to scaling artifacts in high frequency and/or high contrast areas of the image. Please change the magnification factor by one or two percent to avoid those artifacts.

Magnification results differ for live and playback

The MAGNIFICATION feature will always magnify the image by the set percentage. The live image with Surround View turned on will be magnified by the same percentage as the playback image which never has Surround View. Therefore, the playback image will show a different amount of magnification in comparison to a live image with surround view on.

Double PSF RETURN IN image on EVF-2

When feeding a PSF signal to the ALEXA LF RETURN IN and viewing it on an EVF-2, two half-height images will be visible in the viewfinder. This does not affect how PSF images are displayed on the EVF-1 or on MON OUT 1a, 1b, 2 or 3.

Overlay of RETURN IN image is low on EVF-2

The overlay (framelines, cross) of the RETURN IN image is positioned lower than it should be in the EVF-2.

Other

SD card does not mount

Sometimes the SD card does not mount. A reboot usually helps.

Fan revs up on power on

Sometimes, during booting the fan speeds up to max speed for a couple of seconds and then settles in nicely.

Recording

Frame grabs to a full SD card

When the SD card is full, and another frame grab is attempted, the camera will store it as a corrupted frame grab file on the SD card.

REC does not start recording

After running continuously for more than 20 hours, in some cases the camera may not start recording after the REC button has been pushed. In this case the red "• REC" text in the camera's HOME screen, in the viewfinder and in the MON OUT images will blink red continuously and the camera will not record. Please note that a red, blinking "• REC" text is normal for a maximum of 10 seconds before and after the camera starts recording. Only when the "• REC" text blinks red for longer than 10 seconds is this known issue present. Power the camera down and up again and you can continue to shoot.

Recording Media

Warning is not cleared

Warning "W:Media: Temperature high, be careful when handling drive" is not cleared when drive is ejected.

"ACOM down" or "No Media" or "Media Error" or "PCIe error"

On rare occasions an error will occur when the camera is accessing an SxS PRO+ card or an SXR Capture Drive. This can happen when booting the camera, recording or playing back. Turning the camera off and on again should fix the problem.

Remote Control

Web remote shows LF Open gate when LF 16:9 is selected

The web remote shows sensor mode "LF OPEN GATE" when really sensor mode "LF 16:9" is selected

Switching surround view with web remote will toggle the frame border

Switching surround view on or off with the web remote will toggle the frame border on and off.

SUP Update

Updates without LPL lens mount fail

The ALEXA LF camera currently requires the LPL lens mount to be attached when updating the camera's software.

Sync

Sensor sync - error if master is started first

In a setup with sensor sync, but without settings sync, recording needs to be started first on the slave camera, and then on the master camera. When shooting ARRIRAW, recording on the master camera should be started as quickly as possible after the slave camera. If too much time passes (>2s) after recording has been started on the slave camera, the slave camera will go into an error state as soon as recording is started on the master camera.

MON OUT not in sync when off-speed

When the sensor frame rate is not the same as the MON OUT frame rate, the MON OUT SDI signals of two cameras are not in sync.

Usability

iPhone can lose WiFi connection

In some circumstances, it is possible for the web remote on an iPhone to lose connection about every 30 seconds to a minute for about 20 seconds.

ALEXA web remote does not work with Safari browser on a Mac

The ALEXA web remote may not work with the Safari browser on a Mac, but will work with Firefox.

BAT PERCENTAGE has no meaning for Hawk-Woods batteries

Setting a MENU > SYSTEM > POWER > BAT2 WARNING PERCENT value has no meaning when using Hawk-Woods Reel Power on-board batteries as the batteries do not communicate with the camera. Use the MENU > SYSTEM > POWER > BAT2 (ONBOARD) WARNING value in Volts instead.

D. Updating Instructions

Download and Naming Convention

Software Update Packages (SUPs) can be downloaded from the ARRI website at <http://www.arri.com/en/technical-service/firmware/software-and-firmware-updates-for-cameras>.

New SUPs can be installed on the camera either by using an SD card directly in the camera (described in detail below) or from a computer via the ALEXA Ethernet Cable (K2.72021.0).

Please note that ALEXA LF cameras, ALEXA SXT cameras, ALEXA Classic cameras and ALEXA XT/XR cameras require different SUP installation packages.

- Installation packages for ALEXA LF cameras are named 'SUP_AlexaLF_<version-number>'.
- Installation packages for ALEXA SXT cameras are named 'SUP_AlexaSXT_<version-number>'.
- Installation packages for ALEXA Classic cameras are named 'SUP_Alexa_<version-number>'.
- Installation packages for ALEXA XT/XR cameras are named 'SUP_AlexaX_<version-number>'.

Camera Update Procedure via SD Card

Using the SD card for updating is the easiest method. It updates the ALEXA camera as well as the Electronic Viewfinder EVF-1 and EVF-2 as long as the viewfinder is connected to the camera.

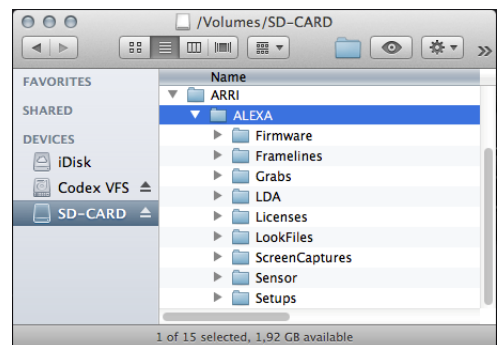
Please note that the ALEXA LF requires the LPL lens mount to be attached when installing a Software Update Package.

Precaution

Make sure the power supply of the camera is stable. The best way to achieve this is by using a mains power supply attached to the battery socket. We do not recommend updating a camera that is powered from a battery.

Preparing the SD Card

- Have a FAT16 or FAT32 formatted SD-Card ready.
- Cards larger than 4 GB are not supported. If you have a larger SD card, you need to create one partition with max. 4GB so it will be compatible with ALEXA.
- Go to MENU > SYSTEM > SD CARD and choose
 - 'Prepare SD card' to create the ALEXA folder structure on the SD card, and keep the existing data.
 - 'Format + prepare SD card' to DELETE ALL DATA on the SD card before creating the ALEXA folders.
- Copy the update package
SUP_AlexaLF_x.x_zzzzz.pkg (for ALEXA LF) or
SUP_AlexaSXT_x.x_zzzzz.pkg (for ALEXA SXT) or
SUP_AlexaX_x.x_zzzzz.pkg (for ALEXA XT/XR) or
SUP_Alexa_x.x_zzzzz.pkg (for ALEXA Classic)
into the 'Firmware' folder on the SD card.



Performing the Update

- Turn the camera on.
- Perform a factory reset in MENU > USER SETUPS > FACTORY RESET.
- Insert the SD card into the SD card slot of the camera. The slot is located below the display on the bottom of the camera, covered by a slider. The direction how the SD card has to be inserted is shown on the camera housing.
- A card icon will show up in the notification area of the camera display. If not, the card is not recognized by the camera.
- Go to MENU > SYSTEM > FIRMWARE.
- The FIRMWARE screen shows you which package is currently installed (Current version: xxx).

- Press the jog wheel to select an update file. The list shows all SUP files that are available on the SD card.
- Choose the desired package and press the two lower outer screen buttons simultaneously to start the update.
- Caution: Do not remove the SD card while the package is being copied to the camera!
- When the 'copying files' message disappears the SD card can be safely removed.
- The update process may take 15 to 20 minutes, depending on the actual software package. Wait until the update process has finished. This is indicated by a green screen informing you that the update process is completed.
- If the update process fails, which will be indicated by a red screen, please restart the camera and repeat the update procedure.
- After the update, turn the camera off by holding down the power button for a few seconds.
- Turn the camera back on. The software is now updated and you can use the camera.

Camera Update Procedure using a Web Browser on your Computer

How to connect ALEXA to a computer

- Turn the camera on.
- Connect the Ethernet port of the computer to the camera with the ALEXA Ethernet/RJ-45 Cable KC 153-S (3.00m/9.8ft, order number K2.72021.0).
- Configure the computer's network interface to which the camera is connected with the following settings:
IP address: 169.254.1.2 (static IP)
Subnet mask: 255.255.0.0
- Open a web browser
- If you are using a Macintosh or a computer with Apple's Bonjour protocol installed enter the following URL into the address bar:
<http://alexaXXXX.local/update.cgi>, where XXXX is the four-digit serial number of your camera (e.g. for ALEXA 7123: <http://alexa7123.local/update.cgi>).
- If you are using a computer without Bonjour support please use the camera's IP address to connect, e.g.:
<http://169.254.xxx.xxx/update.cgi>, where xxx.xxx is the two last groups of your camera's actual IP address. You can determine ALEXA's IP address by going to INFO > SYSTEM.
- If the network settings are configured correctly you will be presented the update page of the camera.

Performing the Update

- Download the Software Update Package to your computer.
- Perform a factory reset in MENU > USER SETUPS > FACTORY RESET.
- In the 'Camera Update' section select the Software Update Package by clicking the 'browse' button and selecting the path to the downloaded SUP on your computer.
- Click the 'Update Camera' button in the 'Camera Update' section.
- The file will be uploaded to the camera which takes about a minute. The browser will switch to the 'Update Log' page showing the update log of the three main boards. This page can be updated by refreshing the page. At the same time the update screen with the progress bars appears on the camera display.
- The update process may take 15 to 20 minutes, depending on the actual software package. Wait until the update process has finished. This is indicated by a green screen informing you that the update process is completed.
- If the update process fails, which will be indicated by a red screen, please restart the camera and repeat the update procedure.
- After the update, turn the camera off and on again. The software is now updated, and you can use the camera.

Updating an Electronic Viewfinder EVF-1 or EVF-2

In case an ALEXA electronic viewfinder EVF-1 or EVF-2 has not been updated with the camera, it is possible to update the viewfinder separately by using a computer. Please note that the viewfinder will be updated to match the SUP package that is installed on the camera.

- Connect the Ethernet port of the computer as described above in 'How to connect ALEXA to a computer'.
- Connect the viewfinder to the camera.
- Open a web browser on the computer and open the update web page of the camera (see above).
- Click the 'Update EVF' button in the 'EVF Update' section.
- You can watch the progress of the update on the screen.
- When the update is done, the last line on the screen reads 'successfully updated Evf'. The update is now finished even though the web browser continues to refresh the page. This is normal. The viewfinder is up to date.
- Depending on its software version, the camera may state: 'software error – reboot camera' on the camera display. This is normal. Please reboot the camera.