

Custom Ground Glasses for the ALEXA Studio

Quick Guide, December 23, 2011

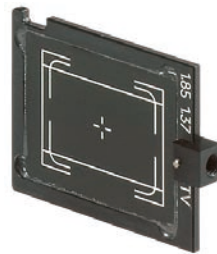
Introduction	2
The ARRI Ground Glass Composer	3
Creating a Basic ALEXA Studio Ground Glass.....	3
Aspect Ratios and Format Dimensions for ALEXA Studio.....	4

Introduction

The physical frames of ALEXA Studio ground glasses and frameglow masks are the same as those used in ARRICAM film cameras.



ALEXA Studio Ground Glass

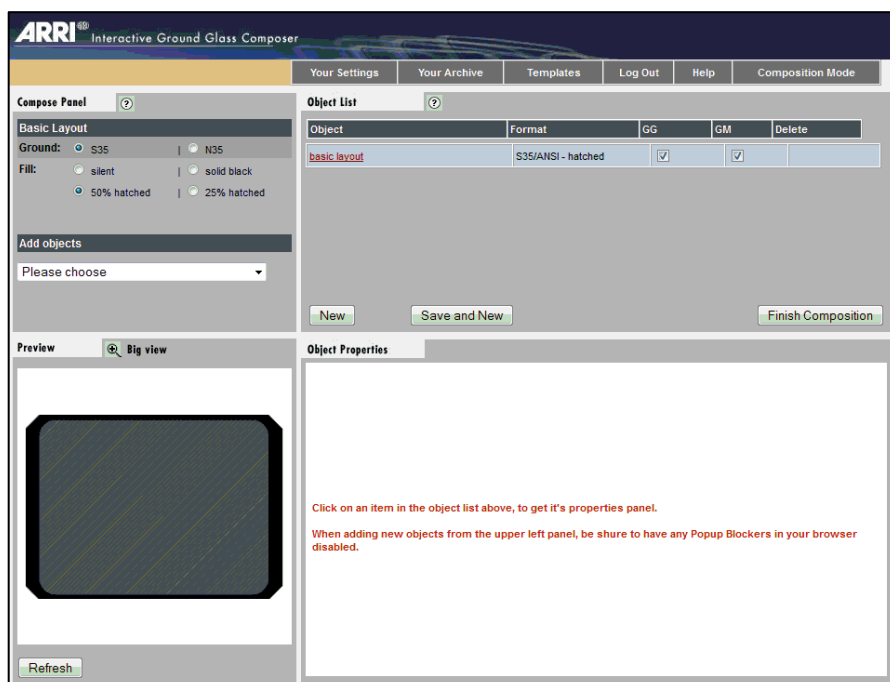


ALEXA Studio Frameglow Mask

However, the actual frameline dimensions are different, so for a precise alignment of framelines and captured pixels only ALEXA Studio ground glasses and frameglow masks should be used.

There is a basic selection of ground glasses and frameglow masks available for the ALEXA Studio in the ARRI Digital Cameras price list. Any other format or combination of formats can be specified and custom ordered using the ARRI Ground glass Composer, a free online tool on the ARRI Website.

http://www.arri.com/camera/ground_glass_composer.html



The ARRI Ground Glass Composer

In order to use the Ground Glass Composer a simple and quick registration is required. The confirmation with username and password is sent out by email, usually in a matter of seconds.

For the ARRI Ground Glass Composer to work properly JavaScript has to be enabled and popup windows have to be allowed.

On successful login the application starts in Composition Mode, which consists of four panels:

- The Object List contains the elements that make up your composition. Initially there is only one element, called basic layout, but you will add elements to this list as you go.
- The Compose Panel specifies the properties of the basic layout, and allows to add objects to the layout.
- In the Object Properties the properties of most objects can be edited.
- The Preview gives a visual approximation on how the new ground glass will look like.
- Big view will open a separate browser window with a larger image of the layout.

Creating a Basic ALEXA Studio Ground Glass

The following describes how to create a ground glass and glow mask for the ALEXA Studio with 4:3 and 16:9 format markings, center cross and 25% shading outside the recorded frame.

Ground Glass Frame

In the Compose Panel set the Basic Layout Ground to S35 and Fill to 25% hatched.

To create the first format select Set free defined rectangle area (dimensions) from Add objects.

Format 4:3

Enter 23.76 as rectangle width and 17.82 as rectangle height.

Select solid white as fill, solid line as line type, and none for radius.

To make sure your format is horizontally and vertically centered, check that X-Offset and Y-Offset are both set to 0.

Click SET to see the new elements in the Preview window.

Open the preview in Big view, or if you have already done so, click refresh in the big window.

Format 16:9

In the Compose Panel choose free defined rectangle area as a new object.

In Object Properties enter 23.76 as the rectangle width in millimeter and 13.37 as the rectangle height.

Select transparent as fill, solid line as line type, and set radius to none.

Again, check that X-Offset and Y-Offset are both set to 0 in order to center the format both horizontally and vertically.

Center Marking

Once again, add a new object, this time by selecting Set center objects from the Add objects pulldown menu. For this example select Center Cross standard.

To be aligned with the optical center of the ALEXA Studio the crosshairs have to be centered.

Select Centered position (ANSI/S35).

Format Label

Add one last object by selecting text object from the Compose Panel.

In the Text to set property enter ALEXA Studio 4:3 / 16:9.

Set the text alignment to basic layout and right. Fine tuning the text position can be done by tweaking the X-Offset and Y-Offset values.

Submitting the design to ARRI

Your ground glass is done now, and you are ready to submit your order.

Click Finish Composition. In the Order window enter a descriptive title for the new ground glass.

As camera type select ARRICAM ST.

Indicate whether the order includes a glow mask.

Enter the amount of ground glasses or ground glass and glow mask you want to order.

Select a ARRI Service Facility to process your order, depending on your location.

After pressing Show my order and finally Order you are given one last chance to review and correct your design. If it is indeed the way you want it check Ok, order now! and you are done.

Aspect Ratios and Format Dimensions for ALEXA Studio

Format	Width (px)	Height	Width (mm)	Height	Width (in)	Height
Full Frame 4:3 (1)	2880	2160	23.76	17.82	0.935"	0.702"
16:9 (1.78:1)	2880	1620	23.76	13.37	0.935"	0.526"
1.85:1	2880	1558	23.76	12.85	0.935"	0.506"
2.39:1 flat	2880	1206	23.76	9.95	0.935"	0.392"
2.39:1 scope 2x	2582	2160	21.30	17.82	0.840"	0.702"
2.39:1 scope 2x inside 16:9	1936	1620	15.97	13.37	0.629"	0.526"
4:3 inside 16:9	2160	1620	17.82	13.37	0.702"	0.526"

(1) in 4:3 mode