



WVS Software Update Package 4.3.28

**For HD video transmitter in ALEXA LF and ALEXA SXT W,
WVT-1, WVR-1 and WVR-1s**

RELEASE NOTES

June 6, 2019

Table of Contents

A. Introduction	3
Important Note	3
Overview of Changes with SUP 4.3.28	3
Update Information	3
Downgrading	4
B. Known Issues	4
C. Updating Instructions	5
Download and Registration Process	5
Update Procedure	5

A. Introduction

We hereby announce that WVS Software Update Package (SUP) 4.3.28 is now shipping with all ARRI Wireless Video System components: integrated HD video transmitters inside ALEXA LF and ALEXA SXT W cameras, Wireless Video Transmitter WVT-1, Wireless Video Receiver WVR-1 and Wireless Video Receiver small WVR-1s.

Important Note

Please note that WVS devices require different installation packages.

- An installation package for integrated HD video transmitters inside ALEXA LF and ALEXA SXT W cameras, Wireless Video Transmitter WVT-1 and Wireless Video Receiver WVR-1 is named for example 'PR_ID_OEM118AUSAARR_PR_NAME_ArriAustraliaA_VER_4_3_28.amn'.
- An installation package for Wireless Video Receiver small WVR-1s is named for example 'PR_ID_OEM144AUSAARR_PR_NAME_ArriCompanionAustraliaA_VER_4_3_28.amn'.

Note: Please do not install a WVS SUP onto a device it is not made for.

Overview of Changes with SUP 4.3.28

• Support for Wireless Video Receiver small WVR-1s

WVS SUP 4.3.28 supports the new Wireless Video Receiver small WVR-1s. A transmitter with WVS SUP 4.3.26 installed is also compatible with a Wireless Video Receiver small WVR-1s but the WVR-1s will prompt the message 'Please update software' on the monitoring output. Therefore, we recommend updating all WVS devices to WVS SUP 4.3.28.

Update Information

Cameras and electronic devices should always run the latest SUP so you can benefit from the latest improvements, features and bug fixes.

All Wireless Video System devices are shipping with WVS SUP 4.3.28 installed from June 3rd on.

Since the pairing between devices will be deleted when a new WVS SUP is installed, it is necessary to pair transmitter and receivers again after installation.

WVS SUP 4.3.28 is backwards compatible with "Update-Starlite-ARRI-WVS-Build-05-0308" of Transvideo Starlite ARRI-WVS devices. The software for Transvideo Starlite ARRI-WVS devices is available at <https://www.transvideo.eu/support-Starlite-ARRI-WVS>.

WVS SUP 4.3.28 is not compatible with versions of the WVS software older than 4.3.23. Please be aware that devices with older software versions than WVS SUP 4.3.23 will not pair, hence please ensure that all devices are running compatible software.

WVS SUP compatibility		Installed on integrated transmitters or WVT-1				
		SUP 4.3.17	SUP 4.3.19	SUP 4.3.23	SUP 4.3.26	SUP 4.3.28
Installed on WVR-1	SUP 4.3.17	✓	✗	✗	✗	✗
	SUP 4.3.19	✗	✓	✗	✗	✗
	SUP 4.3.23	✗	✗	✓	✓ (1)	✗
	SUP 4.3.26	✗	✗	✓ (2)	✓	✓
	SUP 4.3.28	✗	✗	✗	✓	✓
Installed on WVR-1s	SUP 4.3.28	✗	✗	✗	✓ (3)	✓

(1) Improved reliability and signal robustness with integrated transmitters, no VPID functionality

(2) No improved reliability and signal robustness with integrated transmitters, VPID functionality

(3) Compatible, but WVR-1s will prompt message 'Please update software' on the monitoring output as overlay after boot-up.

Downgrading

Downgrading is possible, however we recommend using WVS SUP 4.3.28 on all WVS devices.

B. Known Issues

- **Wireless video transmission image artifact**

On rare occasions will the red and blue colors be reversed for the wireless video.

- **Wireless video artifacts when peaking is on**

On rare occasions an image artifact can occur when using wireless video with peaking on.

- **Wireless video image drifts after sensor mode change**

When using the integrated wireless video transmitter or WVT-1 and changing the sensor mode of the ALEXA LF and ALEXA SXT W, it is possible that the MON OUT of the WVR-1 could lose sync and drift horizontally across the screen. In this case, turning the integrated video transmitter or WVT-1 off and on again should fix the problem.

C. Updating Instructions

Download and Registration Process

You can find the WVS Software Update Package and the ARRI Wireless Tool as one zip file on the ARRI website:

<https://www.arri.com/en/technical-service/firmware/software-updates-ecs/wvr-1-firmware-update>

Update Procedure

Tools needed

- TX5 torx screwdriver
- TX6 torx screwdriver
- USB Cable WVS (K2.0014216) for integrated HD video transmitter, WVT-1 and WVR-1
- USB Micro Cable WVS (K2.0024039) for WVR-1s
- Windows computer with ARRI Wireless Tool software installed
- WVS device with power supply

Updating the device

WVT-1 and WVR-1: Unscrew the two TX5 screws on the bottom of the WVS device to remove the USB cover of the WVS device.

WVR-1s: Open the USB rubber cap located on the left side of the WVR-1s.

ALEXA LF/SXT W: Unscrew the two TX6 screws on the bottom of the integrated HD video transmitter at the back of the camera to remove the USB cover.

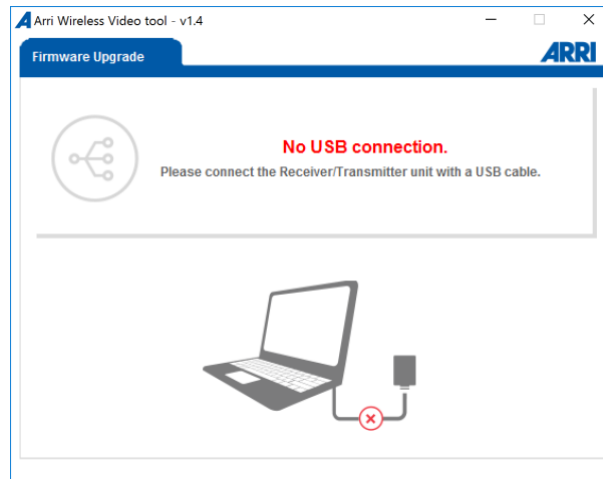
Connect the integrated HD video transmitter, WVT-1 or WVR-1 to the computer's USB port using the USB Cable WVS (K2.0014216).

Connect the WVR-1s to the computer's USB port using the USB Micro Cable WVS (K2.0024039).

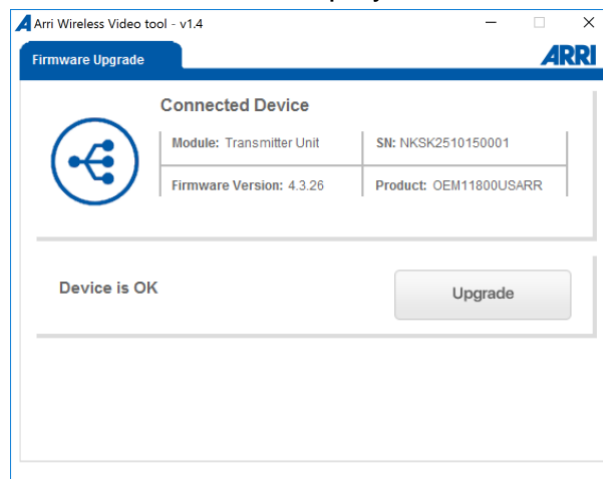
Start the ARRI Wireless Tool software.



- Until the WVS device is powered, the ARRI Wireless Tool will prompt that no USB connection is available.

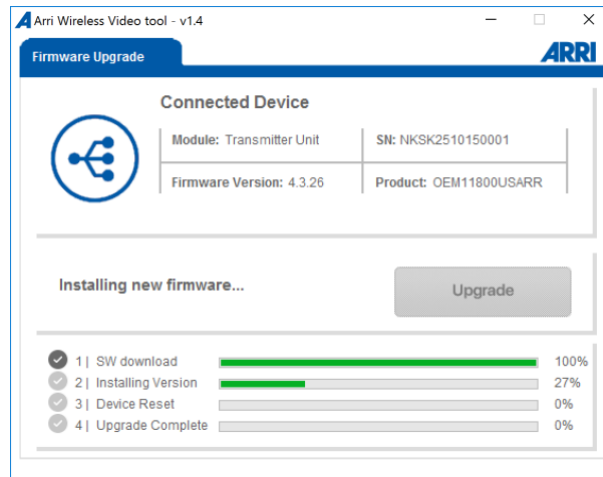


- Power the WVS device using a power supply.
The ARRI Wireless Tool will check for the device and read out its data.
- Once connected, the WVS device data is displayed.

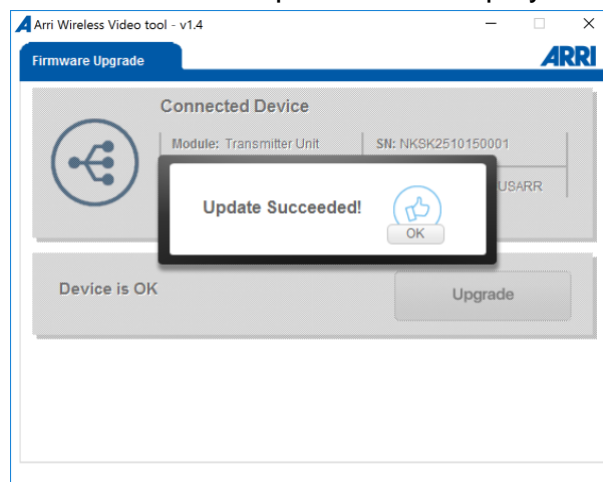


Module: Receiver Unit or Transmitter Unit
 SN: Device serial number
 Firmware Version: Currently installed Firmware Version
 Product: Device product code, includes wireless region identifier

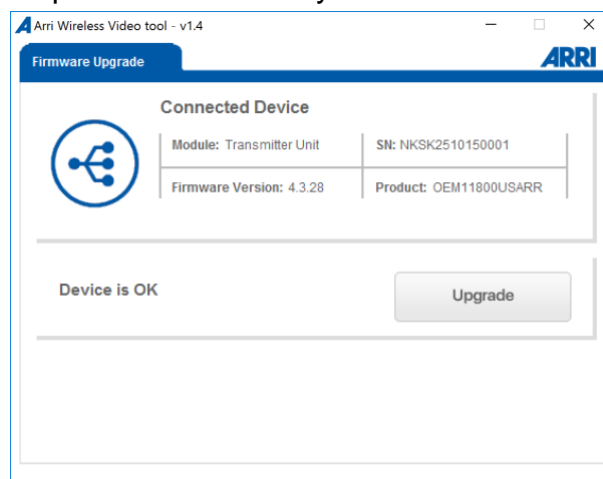
- To upgrade to another firmware version, click the Upgrade button
In the file system explorer window navigate to the folder containing the firmware update files.
- Upon confirmation, the upgrade process will start immediately. Please make sure that the device is sufficiently powered and do not to shut it down during the update.



- The upgrade process may take up to five minutes. The device will restart automatically. Once the update is finished, a pop-up will be displayed.
- Click OK to confirm. The device data is updated and displayed.



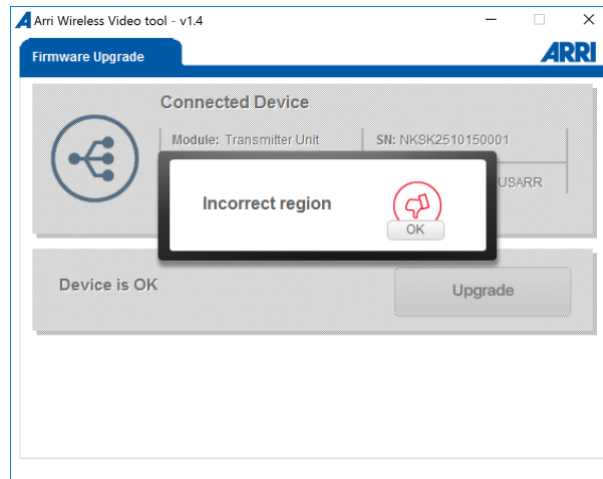
- The firmware has been updated successfully.



Troubleshooting:

In case the updater states “Incorrect region” please verify that the product code of the firmware update file is correct. The product code shown in the ARRI Wireless Video Tool includes a abbreviation for each region setting:

AUSAARR – Australia, ICARR – Canada, CHNARR – China, EUARR – EU, MICARR – Japan, KORARR – Korea, MEARR – Middle East, THARR – Thailand, USARR - US



It is not possible to program a firmware with a different region setting. If you need to have the region setting of your device changed, e.g. to match a device with a different product code, please contact your nearest ARRI Service Subsidiary.

<https://www.arri.com/en/technical-service/technical-support/service-locations>