

## Arrihead



**ARRIHEAD 2**  
with integrated encoders, [K2.52090.0](#)  
without encoders, [K2.43670.0](#)

Reduction Gear, [K2.34301.0](#)  
Wedge Plate, [K2.47171.0](#)  
Handwheel, big, [K2.47001.0](#)

## Support Accessories



Shoulder Belt Adapters  
SBA-1, [K2.0001223](#)



Microphone Holder Bracket  
MHB-1, [K2.66256.0](#)



Lightweight Bridge Support  
LBS-2, [K2.66275.0](#)



Universal Bridge Support  
UBS-3, [K2.0013320](#)



Rosette Adapter RA-1 (pair)  
[K2.66174.0](#)



Rosette Adapter RA-2 (pair)  
[K2.65269.0](#)



Rosette Adapter RA-3 (pair)  
[K2.65268.0](#)



Rosette Adapter RA-4  
[K2.0014825](#)



Rosette Adapter RA-5  
[K2.0024563](#)



Rosette Adapter RA-6 (pair)  
[K2.0024574](#)



Extension Spacer 50 mm  
[K2.0013615](#)

## Quick Release HD

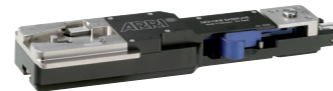


Quick Release Plate  
QRP-1, [K2.0000399](#)

## Quick Release HD



19mm Adapter for  
Sony F5/F55, [K2.66271.0](#)



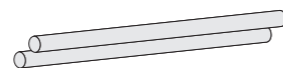
Quick Release  
HD Baseplate  
[K2.47796.0](#)



Support Rod Holder  
19 mm, [K2.47798.0](#)  
Support Rod Holder  
15 mm, [K2.47799.0](#)



Bridge Plate Sled  
BPS-1, [K2.47797.0](#)



Bottom Plates



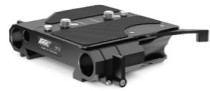
## Bridge Plate



Bridge Plate Set BP-8  
19 mm, [K2.47090.0](#)



Bridge Plate Set BP-9  
15 mm, [K2.47091.0](#)



Bridge Plate BP-8  
19 mm, [K2.0031436](#)



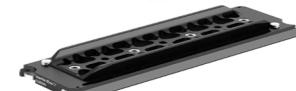
Bridge Plate BP-9  
15 mm, [K2.0031435](#)

## Bridge Plate Sled

Bridge Plate Sled BPS-2 Set  
[KK.0005813](#), includes:



Bridge Plate Sled BPS-2  
[K2.66260.0](#)

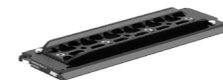


Bottom Dovetail  
Plate 300mm/12in  
[K2.0015896](#)

## Bottom Plates



Bottom Dovetail Plate 150mm/6in  
[K2.0020427](#)



Bottom Dovetail Plate 300mm/12in  
[K2.0015896](#)



Bottom Dovetail Plate 450mm/18in  
[K2.0015950](#)



Bottom Dovetail Plate 600mm/24in  
[K2.0015952](#)



Rod Support Bracket RSB-15, [K2.0000437](#)  
Rod Support Bracket RSB-19, [K2.0000440](#)

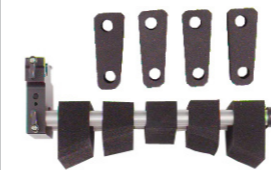


Bottom Plate Set 600 mm/24"  
incl. RSB-15, [KK.0005684](#)

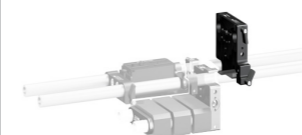


Bottom Plate Set 600 mm/24"  
incl. RSB-19, [KK.0005685](#)

## LWS Shoulder Support



Universal Shoulder Pad  
for 15mm rods USP-2,  
[K2.66209.0](#)  
(incl. UMB-1 and straight foam)



Universal Mounting Bracket  
for 15mm rods (UMB-1)  
[K2.66168.0](#)



Camera Shoulder Pad  
CSP-1, [K2.0006807](#)

## Lens Support - Studio



Lens Support LS-9 for 19 mm rods  
[K2.47227.0](#)



Lens Support LS-10 for 15 mm rods  
[K2.47228.0](#)

## Lens Support - Lightweight



Lightweight Lens Support LLS-1 for  
15 mm rods, [K2.0017029](#)

LLS-1 Pin, [K2.0038782](#)

**\*\* discontinued items  
no stock available anymore**



Zip Gear LS-11 Set **\*\*** [KK.0005756](#)  
consists of 3 zip gears cpl and LS-11  
(without rods)



LS-11 Lens Support **\*\***, [K2.66141.0](#)

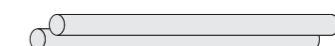


Lens Support Pin LSP-1 (incl.  
2 pcs. 1/4" to 3/8" adapter), **\*\***  
[K2.66145.0](#)



Lens Support Pin LSP-2  
(with 3/8" thread) **\*\*** [K2.66220.0](#)

## 19 mm Studio Rods



540 mm, [K2.72028.0](#)  
stainless steel



440 mm, [K2.0001022](#)  
stainless steel



340 mm, [K2.66269.0](#)  
stainless steel, lightweight



240 mm, [K2.66270.0](#)  
stainless steel, lightweight



150 mm, [K2.0016090](#)  
stainless steel, lightweight



90 mm, [K2.0016088](#)  
stainless steel, lightweight



Single Support Rods 540 mm  
[K2.0014959](#), carbon fibre, black



Single Support Rods 340 mm  
[K2.0014954](#), carbon fibre, black