

# ALEXA Classic



CONFIGURATION OVERVIEW – 1.2.3 / 2015.12

© 2010 Arnold & Richter Cine Technik GmbH & Co. Betriebs KG. All rights reserved. This material is provided "as is" for information purposes only without any warranty. ARRI assumes no responsibility with regard to the performance or use of the products or typographical errors or inaccuracies of given information. Product specifications are subject to change without notice. For a full listing of all available components consult the price list.

## ALEXA Classic



A 35 format film-style digital camera with an electronic viewfinder and a 16:9 active sensor area. Records QuickTime ProRes (4444, 422 HQ or 422) files onto in-camera SxS PRO or SxS PRO+ cards. MXF/DNxHD (444, 220x and 145) recording available with optional DNxHD license key. HD video or ARRIRAW T-link output via HD-SDI. Frame rate: 0.75 to 60 fps (0.75 - 120 fps available with optional High Speed license key). Exposure through electronic rolling shutter: 5.0° - 358.0°.

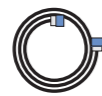
### ALEXA Classic EV Basic Camera Set: K0.711000.D

Includes:  
 K1.71000.0 1x ALEXA Classic EV camera body  
 K2.72018.0 1x SD Card  
 K2.72008.0 1x Electronic Viewfinder EVF-1  
 K2.74001.0 1x Viewfinder Mounting Bracket VMB-3  
 K2.72012.0 1x Viewfinder Cable Short (0.35m/1.2ft) KC 150-S  
 K2.72007.0 1x Center Camera Handle (CCH-1)  
 K2.72002.0 1x Wedge Adapter (WA-1)  
 Note 1: SxS PRO cards, SxS PRO+ cards, on-board battery adapters and software license keys are not included and can be ordered separately.  
 Note 2: SxS PRO+ cards are supported with Software Update Packet 10 or later.

### ALEXA Plus Basic Camera Set: K0.71100.D

Includes:  
 K1.71000.0 1x ALEXA Classic EV camera body  
 K2.72018.0 1x SD Card  
 K2.72008.0 1x Electronic Viewfinder EVF-1  
 K2.74001.0 1x Viewfinder Mounting Bracket VMB-3  
 K2.72012.0 1x Viewfinder Cable Short (0.35m/1.2ft) KC 150-S  
 K2.72007.0 1x Center Camera Handle (CCH-1)  
 K2.72002.0 1x Wedge Adapter (WA-1)  
 K0.0003277 1x SxS PRO+ Card Set 5x 128 GB  
 K2.72021.0 1x ALEXA Ethernet/RJ-45 Cable (3.00m/9.8ft) KC 153-S  
 K2.72013.0 1x Viewfinder Cable Medium (0.65m/2.1ft) KC 151-S  
 K2.72083.0 1x Shoulder Pad (SP-4)  
 K2.72031.0 1x ALEXA 12V Accessory Cable KC 154-SP-S  
 K2.72015.0 1x Handle Extension Block (HEB-2)  
 K2.72017.0 1x Leveling Block (LB-1)  
 K2.74000.0 1x Viewfinder Extension Bracket VEB-3  
 K2.66172.0 1x Bridge Plate Adapter BPA-2  
 Note 1: an on-board battery adapter is not included and should be ordered separately.  
 Note 2: SxS PRO+ cards are supported with Software Update Packet 10 Open Beta 2 or later.

## Cables



**ALEXA 3D Cable Set, K0.71032.0**  
 One ALEXA EXT to EXT Cable for sensor and HD outputs sync and one ALEXA Ethernet to Ethernet Cable for camera settings sync (Set incl. KC155-S, K2.72032.0 and KC156-S, K2.72033.0)

**UMC Connection Cable K-UMC3-ALEXA, K2.65239.0**  
**ALEXA 12V Accessory Cable KC 154-SP-S, K2.72031.0** (coiled)  
**ALEXA Ethernet Cable 3m KC 153-S, K2.72021.0**  
**ALEXA EXT - EXT Cable 2m KC 155-S, K2.72032.0**  
**ALEXA Ethernet-Ethernet Cable 2M KC 156-S, K2.72033.0**  
**ALEXA Ethernet Remote Cable (1m/3.3ft) KC 158-S, K2.72041.0**  
**ALEXA Ethernet Remote Cable (2m/6.6ft) KC 157-S, K2.72040.0**

**ALEXA Ethernet Extension Cable (15m/50ft) for RCU-4 KC 159-S, K2.72043.0** (up to three KC-159-S for total length of 47m/154ft with K2.72040.0 or 46m/151ft with K2.72041.0)

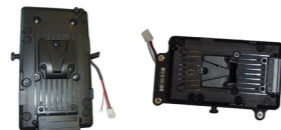
## Power Supply & Battery Adapter



**Power Cable**  
**KC-20 K2.41966.0,**  
**KC-29 K2.44693.0** (coiled)

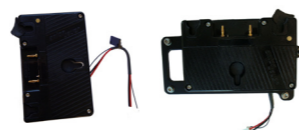


**AMIRA/ALEXA Power supply light (24V indoor only) K2.0006876**



**Battery Adapter Back for V Mount, BAB-V K2.72010.0**

**Battery Adapter Top for V Mount, BAT-V K2.72011.0**



**Battery Adapter Back for Gold Mount, BAB-G K2.72003.0**

**Battery Adapter Top for Gold Mount, BAT-G K2.72006.0**

## Viewfinder System



**Electronic Viewfinder EVF-1, K2.72008.0**



**Viewfinder Extension Bracket VEB-3, K2.74000.0**



**Heated Eycup, HE-7 K2.0003898**



**Viewfinder Mounting Bracket, VMB-3 K2.74001.0**

## XR Module Upgrade



**XR Module Upgrade Set K4.72574.0**

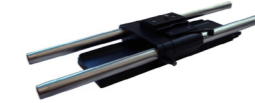
## Support, Handles & Elec. Accessories



**Remote Control Unit RCU-4, K2.72036.0** (incl. ALEXA Ethernet Remote Cable (2m/6.6ft) KC 157-S K2.72040.0)



**ALEXA Rain Protector ARP-1, K2.72026.0**



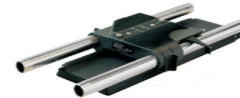
**Bridge Plate, BP-12 Set (incl. base plate & rods) for 19 mm, K0.71031.0**  
**Bridge Plate, BP-13 Set (incl. base plate & rods) for 15 mm, K0.60165.0**



**Bridge Plate Adapter BPA-2** (for BP-3, 5, 8 or 9) K2.66172.0



**Universal Adapter Plate UAP-1 K2.72102.0**



**Bridge Plate BP-8 K2.47090.0**



**Wedge Adapter, WA-1** (for Quick Release HD-Baseplate) K2.72002.0 (spare)



**Quick Release HD Baseplate K2.47796.0**



**Shoulder Pad SP-4 K2.72083.0**



**Low Mode Support Set, LMS-3 K2.72023.0**



**Centre Camera Handle CCH-1, K2.72007.0** (spare)



**Side Camera Handle, SCH-1 K2.72016.0**



**Adjustable Center Grip tall, ACG-2, K2.72022.0**



**Codex/ALEXA Onboard S Bracket Set, K0.60188.0**



**Handle Extension Block HEB-1** (without tape hook) K2.0001016



**Handle Extension Block HEB-2** (with tape hook) K2.72015.0



**ALEXA Handgrip Set K0.71033.0**



**Camera Handgrip Right, K2.45886.0**



**Extension for Handgrip K2.47136.0**



**Leveling Block LB-1, K2.72017.0**



**Rod Mounting Bracket RMB-2 K0.60209.0**



**Ultrasonic Distance Measure UDM-1 Set K0.60055.0**  
**Cable UDM-ALEXA K2.65261.0**



**Ext Distribution Box EDB-1 K2.72038.0**



**Case for ALEXA K2.72030.0**