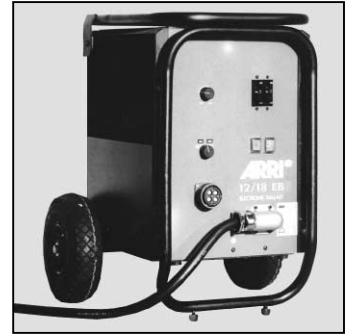


Please click here to get a Lighting service contact overview:

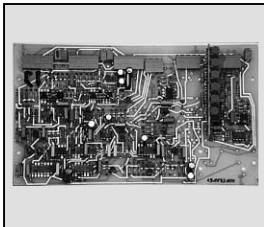
Klicken Sie bitte hier um eine Übersicht unserer Service-Kontakte zu erhalten :

www.arri.de

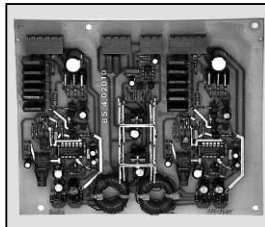


04 - 2009

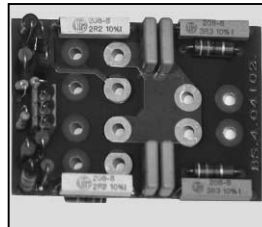
NOTE: WHEN ORDERING QUOTE PART NUMBER BEMERKUNG: BEI BESTELLUNG IDENT.-NR. ANGEBEN



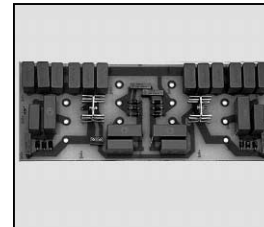
L4.82609.E
Control board
Regelkarte



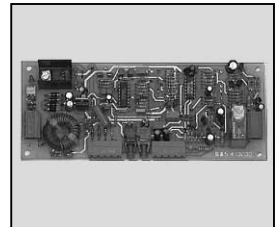
L4.82566.E
LF-base drive board
NF-Ansteuerung



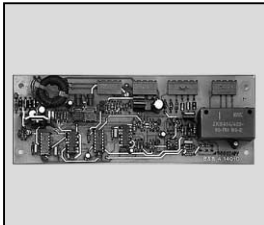
L4.82550.E
HF-snubber board
HF-Entlastung



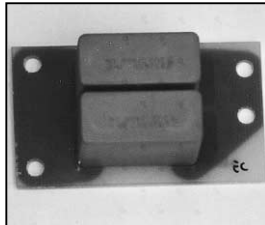
L4.82569.E
LF-snubber board
NF-Entlastung



L4.82571.E
Control board act. line filter
Regelkarte akt. Netzfilter



L4.82572.E
HF-gate drive board
HF-Gate-Ansteuerung



L4.82559.E
HF-capacitor board
HF-Kondensator-Platine



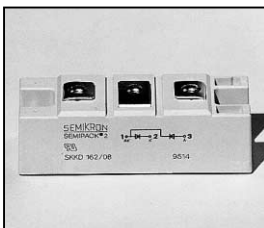
L4.82573.E
Transistormodule
Transistormodul



L4.82532.E
Power FET module
Power FET Modul



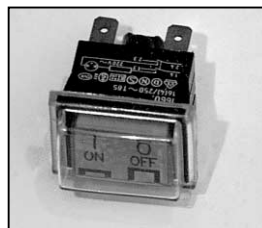
L4.82533.E
Diode module
Diodenmodul



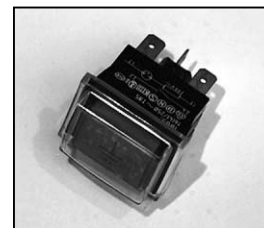
L4.82611.E
Input rectifier
Netzgleichrichter



L4.82612.E
Mains contactor
Schütz



L4.82513.E
Mains switch
Netzschalter



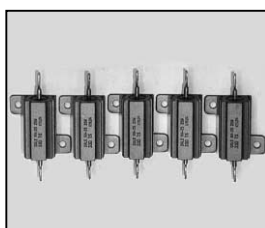
L4.82514.E
Earth test switch
Erdtaster



L4.82516.E
Dimm pot with knob
Dimmpotentiometer
mit Drehknopf



L4.82577.E
Input capacitor
Ladeelko



L4.82578.E
Ignitor and start resistor-set
Zünd- und Startwiderstand-Set



L4.75786.E
Veam output connector
(female)
Veam Output Stecker
(Buchsenkontakt)