

ALEXA SXT EV and ALEXA SXT Plus



CONFIGURATION OVERVIEW – 1.2.4 / 2016.09

© 2010 Arnold & Richter Cine Technik GmbH & Co. Betriebs KG. All rights reserved. This material is provided "as is" for information purposes only without any warranty. ARRI assumes no responsibility with regard to the performance or use of the products or typographical errors or inaccuracies of given information. Product specifications are subject to change without notice. For a full listing of all available components consult the price list.

ALEXA EV SXT & ALEXA SXT Plus Sets



A 35 format film-style digital camera with an electronic viewfinder and four sensor modes: Open Gate, 4:3, 6:5 and 16:9. Includes built-in FSND filter holder and Lens Data System. Records ARRIRAW onto in-camera SXR Capture Drives or XR Capture Drives. Records Quick-Time ProRes (4444 XQ, 4444, 422 HQ or 422) files in recording resolutions of HD, 2K, 4K UHD or 4K Cine onto in-camera SXR Capture Drives, XR Capture Drives, SxS PRO cards (SxS Adapter 2 required), SxS PRO+ cards (SxS Adapter 2 required) or CFast 2.0 cards (CFast 2.0 Adapter 2 required). Can process ASC CDL values and 3D LUTs. Four independent monitoring outputs: EVF-1 and MON OUT 1, 2, 3. Exposure through electronic rolling shutter: 5.0° - 358.0°.

ALEXA SXT EV Basic Camera Set, K0.0007028

Includes:
 K1.0006178 1x ALEXA SXT EV camera body
 K2.0008429 1x SXR Adapter
 K2.0008430 1x XR Adapter
 K2.72018.0 1x SD Card
 K2.72008.0 1x ALEXA Electronic Viewfinder EVF-1
 K2.74001.0 1x Viewfinder Mounting Bracket VMB-3
 K2.72012.0 1x Viewfinder Cable Short (0.35m/1.2ft) KC 150-S
 K2.72007.0 1x Center Camera Handle (CCH-1)
 K2.72002.0 1x Wedge Adapter (WA-1)
 Note: SXR Capture Drives, XR Capture Drives, SxS Adapter 2, CFast 2.0 Adapter 2, docks, SxS PRO cards, SxS PRO+ cards, CFast 2.0 cards, FSND filters and on-board battery adapters are not included and can be ordered separately.

ALEXA SXT EV Pro Camera Set, KB.72001.D

Includes:
 K0.0007756 1x SXT EV Basic Camera Set for Pro Set
 K2.72139.0 1x FSND Filter Set (Full)
 K0.71030.0 1x ALEXA Bundle Accessory Set (EV/Plus)
 K2.0006942 4x SXR Capture Drive 1 TB
 Note 1: Docks or on-board battery adapters are not included and can be ordered separately.
 Note 2: For use with FSND filters, the included FSND shim has to be installed to assure proper flange focal depth.

For more Sets please see current ALEXA Price List.



Same as ALEXA SXT EV. Four independent HD-SDI monitoring outputs. Exposure through electronic rolling shutter: 5.0° - 358.0°. Built-in real-time wireless lens and camera control with the ARRI Electronic Control System. One extra MON OUT and one extra RS socket, built-in 3D lens synchronization and motion sensors.

ALEXA SXT Plus Basic Camera Set, K0.0007029

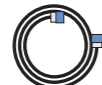
Includes:
 K1.0006383 1x ALEXA SXT Plus camera body
 K2.0008429 1x SXR Adapter
 K2.0008430 1x XR Adapter
 K2.72018.0 1x SD Card
 K2.72008.0 1x ALEXA Electronic Viewfinder EVF-1
 K2.74001.0 1x Viewfinder Mounting Bracket VMB-3
 K2.72012.0 1x Viewfinder Cable Short (0.35m/1.2ft) KC 150-S
 K2.72007.0 1x Center Camera Handle (CCH-1)
 K2.72002.0 1x Wedge Adapter (WA-1)
 Note: SXR Capture Drives, XR Capture Drives, SxS Adapter 2, CFast 2.0 Adapter 2, docks, SxS PRO cards, SxS PRO+ cards, CFast 2.0 cards, FSND filters and on-board battery adapters are not included and can be ordered separately.

ALEXA SXT Plus Pro Camera Set KB.72002.D

Includes:
 K0.0007754 1x SXT Plus Basic Camera Set for Pro Set
 K2.72139.0 1x FSND Filter Set (Full)
 K0.71030.0 1x ALEXA Bundle Accessory Set (EV/Plus)
 K2.0006942 4x SXR Capture Drive 1 TB
 Note 1: Docks or on-board battery adapters are not included and can be ordered separately.
 Note 2: For use with FSND filters, the included FSND shim has to be installed to assure proper flange focal depth.

For more Sets please see current ALEXA Price List.

Cables



ALEXA 3D Cable Set, K0.71032.0

One ALEXA EXT to EXT Cable for sensor and HD outputs sync and one ALEXA Ethernet to Ethernet Cable for camera settings sync (Set incl. KC155-S, K2.72032.0 and KC156-S, K2.72033.0)

UMC Connection Cable K-UMC3-ALEXA, K2.65239.0

ALEXA 12V Accessory Cable KC 154-SP-S, K2.72031.0 (coiled)

ALEXA Ethernet Cable 3m KC 153-S, K2.72021.0

ALEXA EXT - EXT Cable 2m KC 155-S, K2.72032.0

ALEXA Ethernet-Ethernet Cable 2M KC 156-S, K2.72033.0

ALEXA Ethernet Remote Cable (1m/3.3ft) KC 158-S, K2.72041.0

ALEXA Ethernet Remote Cable (2m/6.6ft) KC 157-S, K2.72040.0

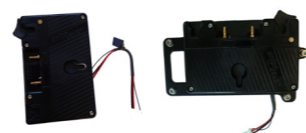
ALEXA Ethernet Extension Cable (15m/50ft) for RCU-4

KC 159-S, K2.72043.0 (up to three KC-159-S for total length of 47m/154ft with K2.72040.0 or 46m/151ft with K2.72041.0)

Power Supply & Battery Adapter



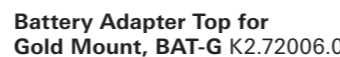
Battery Adapter Back for V Mount, BAB-V K2.72010.0



Battery Adapter Back for Gold Mount, BAB-G K2.72003.0



Battery Adapter Top for V Mount, BAT-V K2.72011.0



Battery Adapter Top for Gold Mount, BAT-G K2.72006.0



AMIRA/ALEXA Power supply light (24V indoor only) K2.0006876



Power Cable KC-20 K2.41966.0, KC-29 K2.44693.0 (coiled)

Viewfinder System



Electronic Viewfinder EVF-1, K2.72008.0

Viewfinder Cable
 35 cm, KC 150-S K2.72012.0
 65 cm, KC 151-S K2.72013.0
 200 cm, KC 152-S K2.72014.0



Viewfinder Extension Bracket VEB-3, K2.74000.0



Viewfinder Mounting Bracket, VMB-3 K2.74001.0



Heated Eycup, HE-7 K2.0003898

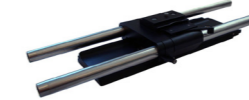
Accessories



Remote Control Unit RCU-4, K2.72036.0 (incl. ALEXA Ethernet Remote Cable (2m/6.6ft) KC 157-S K2.72040.0)



ALEXA Rain Protector ARP-1, K2.72026.0



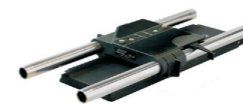
Bridge Plate, BP-12 Set (incl. base plate & rods) for 19 mm, K0.71031.0
 Bridge Plate, BP-13 Set (incl. base plate & rods) for 15 mm, K0.60165.0



Bridge Plate Adapter BPA-2 (for BP-3, 5, 8 or 9) K2.66172.0



Universal Adapter Plate UAP-1 K2.72102.0



Bridge Plate BP-8 K2.47090.0



Wedge Adapter, WA-1 (for Quick Release HD-Baseplate) K2.72002.0 (spare)



Quick Release HD Baseplate K2.47796.0



Shoulder Pad SP-4 K2.72083.0



Low Mode Support Set, LMS-3 K2.72023.0



Centre Camera Handle CCH-1, K2.72007.0 (spare)



Side Camera Handle, SCH-1 K2.72016.0



Adjustable Center Grip tall, ACG-2, K2.72022.0



Handle Extension Block HEB-1 (without tape hook) K2.0001016



Handle Extension Block HEB-2 (with tape hook) K2.72015.0



ALEXA Handgrip Set K0.71033.0



Camera Handgrip Right, K2.45886.0



Extension for Handgrip K2.47136.0



Leveling Block LB-1, K2.72017.0



Ultrasonic Distance Measure UDM-1 Set K0.60055.0 Cable UDM-ALEXA K2.65261.0



Ext Distribution Box EDB-1 K2.72038.0



Case for ALEXA K2.72030.0



Rod Mounting Bracket RMB-2, K0.60209.0