

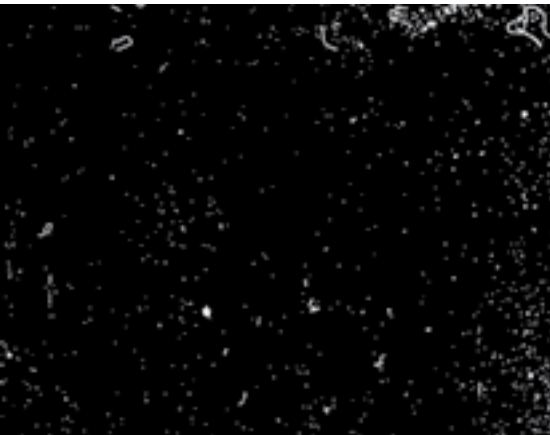
## ARRISCAN

## with KODAK DIGITAL ICE

*Infrared based dust and scratch removal via KODAK DIGITAL ICE Technology for Motion Picture Film is now available for ARRISCAN clients.*



Original Scan



Defect Map



DICE Correction

The ARRISCAN now comes up with another exciting feature – a client oriented solution for infrared based dust and scratch removal while scanning film material for digital intermediate or HD applications. The ARRISCAN film scanner bridges the gap between film acquisition and digital post-production. Besides the RGB illumination unit, the ARRISCAN uses an additional infrared illumination to detect film defects.

Based on the infrared channel of the ARRISCAN, KODAK DIGITAL ICE Technology, developed by Eastman Kodak, automatically removes dust, scratches and blemishes from a scanned image significantly improving downstream workflow productivity both in terms of labour and time.

Because film dyes are nearly transparent for infrared light, it is possible to produce a complete defect image of scratches, dust and other image artefacts by infrared illumination. This defect image is used as a basis for sophisticated image correction algorithms as implemented in KODAK's DIGITAL ICE. All defects are marked in a defect map for further processing. This image can be embedded as a fourth channel in the scanned image file (DPX format) or stored as a separate file.

KODAK DIGITAL ICE Technology is running as an embedded software application in the ARRISCAN, optimized for the image processing chain of the ARRISCAN.

In January 2006 a two-month beta cycle was successfully finished. Users have given their first valuable feedback and impressions. Kodak and ARRI are having the first release of KODAK DIGITAL ICE in May 2006. Prior to the release date of Digital ICE 1.0 all ARRISCAN users are invited to use the DICE solution as a free of charge evaluation license.

Together with the ARRISCAN Speed Pack 1 option (please see information) the ARRISCAN is the fastest film scanner in the industry, delivering pristine image quality and reliability plus a workflow solution to efficiently handle scratches & dust.

The ARRISCAN once again raises the bar in scanning technology and brings unparalleled enhancements to the digital intermediate workflow.

*Elfi Bernt*

#### **New Features for ARRISCAN:**

- Keycode based workflow
- Digital dailies scan mode & workflow

#### **New Options for the ARRISCAN:**

- Speed Pack 1 Option for ARRISCAN  
The speed pack 1 brings scanning time down to:
  - 4 frames/sec in 3K, 3K to 2K (oversampled)
  - 1 frame/sec in 6K, 6K to 4K (oversampled) and 6K to 2K (oversampled)
- Infrared based KODAK DIGITAL ICE Technology for automated dust removal