

## Arrihead



**ARRIHEAD 2**  
with integrated encoders, K2.52090.0  
without encoders, [K2.43670.0](#)

**Reduction Gear**, [K2.34301.0](#)  
**Wedge Plate**, K2.47171.0  
**Handwheel, big**, K2.47001.0

## Support Accessories



**NATO Rail Clamp NRC-1**, [K2.0047776](#)

**NATO Rail Clamp NRC-2**, [K2.0048324](#)

**Shoulder Belt Adapters SBA-1**, [K2.0001223](#)

**Microphone Bracket Holder MBH-1** [K2.66256.0](#)

**Lightweight Bridge Support LBS-2**, [K2.66275.0](#)

**Universal Bridge Support UBS-3**, [K2.0013320](#)

**Rosette Adapter RA-1 (pair)** [K2.66174.0](#)

**Rosette Adapter RA-2 (pair)** [K2.65269.0](#)

**Rosette Adapter RA-3 (pair)** [K2.65268.0](#)

**Rosette Adapter RA-4** K2.47091.0

**Rosette Adapter RA-5** [K2.0024563](#)

**Rosette Adapter RA-6 (pair)** [K2.0024574](#)

**Extension Spacer 50 mm** [K2.0013615](#)

## Quick Release HD



**Quick Release Plate QRP-1**, [K2.0000399](#)

## Quick Release HD

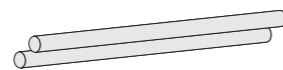


**19mm Adapter for Sony F5/F55**, K2.66271.0



**Quick Release HD Baseplate** [K2.47796.0](#)

**Support Rod Holder 19 mm**, [K2.47798.0](#)  
**Support Rod Holder 15 mm**, [K2.47799.0](#)

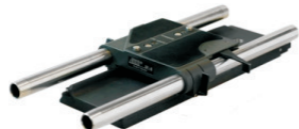


**Bridge Plate Sled BPS-1**, [K2.47797.0](#)

**Bottom Plates**



## Bridge Plate



**Bridge Plate Set BP-8**  
19 mm, K2.47090.0



**Bridge Plate Set BP-9**  
15 mm, K2.47091.0



**Bridge Plate BP-8**  
19 mm, [K2.0031436](#)



**Bridge Plate BP-9**  
15 mm, [K2.0031435](#)

## Bridge Plate Sled

**Bridge Plate Sled BPS-2 Set** [KK.0005813](#), includes:



**Bridge Plate Sled BPS-2** [K2.66260.0](#)

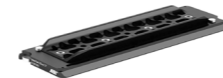


**Bottom Dovetail Plate 300mm/12in** [K2.0015896](#)

## Bottom Plates



**Bottom Dovetail Plate 150mm/6in** [K2.0020427](#)



**Bottom Dovetail Plate 300mm/12in** [K2.0015896](#)



**Bottom Dovetail Plate 450mm/18in** [K2.0015950](#)



**Bottom Dovetail Plate 600mm/24in** [K2.0015952](#)



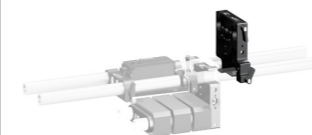
**Rod Support Bracket RSB-15**, [K2.0000437](#)  
**Rod Support Bracket RSB-19**, [K2.0000440](#)



## LWS Shoulder Support



**Universal Shoulder Pad for 15mm rods USP-2**, [K2.66209.0](#)  
(incl. UMB-1 and straight foam)



**Universal Mounting Bracket for 15mm rods (UMB-1)** K2.66168.0



**Camera Shoulder Pad CSP-1**, [K2.0006807](#)

## Lens Support - Studio



**Lens Support LS-9 for 19 mm rods** [K2.47227.0](#)



**Lens Support LS-10 for 15 mm rods** [K2.47228.0](#)

## Lens Support - Lightweight



**Lightweight Lens Support LLS-1 for 15 mm rods**, [K2.0017029](#)



**LLS-1 Pin**, [K2.0038782](#)

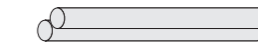
## 19 mm Studio Rods



**540 mm**, [K2.72028.0](#)  
stainless steel



**440 mm**, [K2.0001022](#)  
stainless steel



**340 mm**, [K2.66269.0](#)  
stainless steel, lightweight



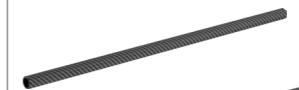
**240 mm**, [K2.66270.0](#)  
stainless steel, lightweight



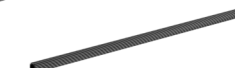
**150 mm**, [K2.0016090](#)  
stainless steel, lightweight



**90 mm**, [K2.0016088](#)  
stainless steel, lightweight



**Single Support Rods 540 mm** K2.0014959, carbon fibre, black



**Single Support Rods 340 mm** K2.0014954, carbon fibre, black