

# ALEXA FIBER REMOTE



CONFIGURATION OVERVIEW – 1.5.0 / 2015.03

© 2010 Arnold & Richter Cine Technik GmbH & Co. Betriebs KG. All rights reserved. This material is provided "as is" for information purposes only without any warranty. ARRI assumes no responsibility with regard to the performance or use of the products or typographical errors or inaccuracies of given information. Product specifications are subject to change without notice. For a full listing of all available components consult the price list.

## Sets and Remote Option



A 35 format film-style digital camera with a 16:9 active sensor area and built-in Lens Data System for multi-camera environments typical for Broadcast studios or OB van productions. Can be remotely controlled for live painting through a SMPTE 311M fiber connection. Can record QuickTime ProRes 4444, ProRes 422 (HQ), ProRes 422, ProRes 422 (LT) and ProRes 422 (Proxy) files onto in-camera SxS PRO cards (MXF/DNxHD 220x and 145 with DNxHD license key). Outputs HD-SDI on BNC connectors. Frame rate: 0.75 to 60 fps (0.75 - 120 fps up to ProRes 422 HQ with High Speed license key). Up to 1080/60p on SMPTE 311M fiber connection. Exposure through electronic rolling shutter: 5.0° - 358.0°. Built-in real-time wireless lens control and REC support with the ARRI Wireless Remote System (WRS). One extra MON OUT and one extra RS socket, motion sensors and quick switch BNC connectors.

### ALEXA Fiber Remote Plus Basic Camera Set: K0.71250.D

Includes:  
 K1.71050.0 - ALEXA HD Plus camera body, tool set and manual  
 K2.72046.0 - SxS Module  
 K2.72034.0 - ProRes Codec Option  
 K2.72035.0 - QuickTime File Format Option  
 K2.72018.0 - SD Card  
 K2.72007.0 - Center Camera Handle (CCH-1)  
 K2.72002.0 - Wedge Adapter (WA-1)  
 K2.72118.0 - ALEXA Fiber Remote Option

Note: A Telecast Copperhead system and camera monitor (for typical pedestal use) are required but not included. SxS PRO cards, on-board battery adapters and software license keys are also not included and can be ordered separately. Electronic viewfinder not included but possible. This camera set does not include and cannot be upgraded to ARRIRAW, ProRes 2K, 3D sync, XR Module.

A 35 format film-style digital camera with a 16:9 active sensor area for multi-camera environments typical for Broadcast studios or OB van productions. Can be remotely controlled for live painting through a SMPTE 311M fiber connection. Can record QuickTime ProRes 4444, ProRes 422 (HQ), ProRes 422, ProRes 422 (LT) and ProRes 422 (Proxy) files onto in-camera SxS PRO cards (MXF/DNxHD 220x and 145 with DNxHD license key). Outputs HD-SDI on BNC connectors. Frame rate: 0.75 to 60 fps (0.75 - 120 fps up to ProRes 422 HQ with High Speed license key). Up to 1080/60p on SMPTE 311M fiber connection. Exposure through electronic rolling shutter: 5.0° - 358.0°.

### ALEXA Fiber Remote Basic Camera Set: K0.71230.D

Includes:  
 K1.71010.0 - ALEXA HD camera body, tool set and manual  
 K2.72046.0 - SxS Module  
 K2.72034.0 - ProRes Codec Option  
 K2.72035.0 - QuickTime File Format Option  
 K2.72018.0 - SD Card  
 K2.72007.0 - Center Camera Handle (CCH-1)  
 K2.72002.0 - Wedge Adapter (WA-1)  
 K2.72118.0 - ALEXA Fiber Remote Option

Note: A Telecast Copperhead system and camera monitor (for typical pedestal use) are required but not included. SxS PRO cards, on-board battery adapters and software license keys are also not included and can be ordered separately. Plus upgrade is possible. Electronic viewfinder not included but possible. This camera set does not include and cannot be upgraded to ARRIRAW, ProRes 2K, 3D sync, XR Module.

### ALEXA Fiber Remote Option, K2.72118.0

An upgrade for the ALEXA, ALEXA Plus, ALEXA XT or ALEXA XT Plus cameras that can be installed by the customer. With the Fiber Remote Option attached, the ALEXA can be connected through a SMPTE 311M fiber connection for the following functions: live painting operation, interconnecting with a studio switcher and a remote control panel, TV conform signal parameter adjustments with the standard (Telecast) Remote Control Panel, return video signal, Teleprompter signal, intercom connection, sync option to lock to the phasing of the studio clock (like Genlock), option to use 2/3" B4 mount lenses (with IB/E adapter, instead of PL 35mm lenses), parallel operation of fiber remote transmission and SxS recording, easy switch between standard ALEXA mode and Fiber Remote (Live Painting) mode

Includes:  
 - Fiber Remote Box  
 - Monitor mount  
 - Cables  
 - Live Painting software license

Note: A Telecast Copperhead system and camera monitor (for typical pedestal use) are required but not included.

## Viewfinder System



**Electronic Viewfinder EVF-1, K2.72008.0 (spare)**

**Viewfinder Cable**  
 35 cm, KC 150-S K2.72012.0  
 65 cm, KC 151-S K2.72013.0  
 200 cm, KC 152-S K2.72014.0



**Viewfinder Extension Bracket VEB-3, K2.74000.0**



**Viewfinder Mounting Bracket, VMB-3 K2.74001.0 (spare)**



**Heated Eycup, HE-6 K2.72125.0**

## Cables

### HDTV BNC Cable (HD-SDI)

0,25 m black K2.47840.0, blue K2.47841.0  
 2 m black K2.47842.0, blue K2.47843.0  
 10 m black K2.47844.0, blue K2.47845.0  
 20 m black K2.47838.0, blue K2.47839.0



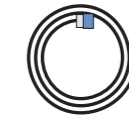
**SMPTE 311 Cable (20 m/65 ft) K2.72087.0**

**ENG Adapter Fujinon K2.48825.0**

**ENG Adapter Canon K2.48825.0**

**Cable CAB-1 (cmotion), K2.72087.0**

**ALEXA Ethernet Extension Cable (15m/50ft) KC 159-S, K2.72043.0** (up to three KC-159-S for total length of 47m/154ft with K2.72040.0 or 46m/151ft with K2.72041.0)



**ALEXA 12V Accessory Cable KC 154-SP-S, K2.72031.0** (coiled)

**ALEXA Ethernet Cable 3m KC 153-S, K2.72021.0**

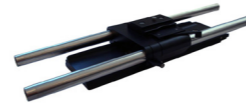
**ALEXA EXT - EXT Cable 2m KC 155-S, K2.72032.0**

**ALEXA Ethernet-Ethernet Cable 2M KC 156-S, K2.72033.0**

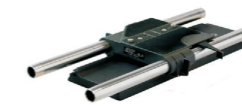
**ALEXA Ethernet Remote Cable (1m/3.3ft) KC 158-S, K2.72041.0**

**ALEXA Ethernet Remote Cable (2m/6.6ft) KC 157-S, K2.72040.0**

## Support, Handles & Elec. Accessories



**Bridge Plate, BP-12 Set (incl. base plate & rods) for 19 mm, K0.71031.0**  
**Bridge Plate, BP-13 Set (incl. base plate & rods) for 15 mm, K0.60165.0**



**Bridge Plate BP-8 K2.47090.0**



**Bridge Plate Adapter BPA-2 (for BP-3, 5, 8 or 9) K2.66172.0**



**Quick Release HD Baseplate K2.47796.0**



**Wedge Adapter, WA-1 (for Quick Release HD-Baseplate) K2.72002.0 (spare)**



**Side Camera Handle, SCH-1 K2.72016.0**



**Adjustable Center Grip tall, ACG-2, K2.72022.0**



**Centre Camera Handle CCH-1, K2.72007.0 (spare)**



**Handle Extension Block HEB-1 (without tape hook) K2.0001016**



**Handle Extension Block HEB-2 (with tape hook) K2.72015.0**



**Leveling Block LB-1, K2.72017.0**



**Low Mode Support Set, LMS-3 K2.72023.0**



**Universal Adapter Plate UPA-1, K2.72102.0**



**Remote Control Unit RCU-4, K2.72036.0** (incl. ALEXA Ethernet Remote Cable (2m/6.6ft) KC 157-S K2.72040.0)



**Ext Distribution Box EDB-1 K2.72038.0**



**Case for ALEXA K2.72030.0**