

# Side to Side Clamp Adjustment TRINITY 2

USER MANUAL

July 2023



# 1 Side to Side Clamp Adjustment DUB-3

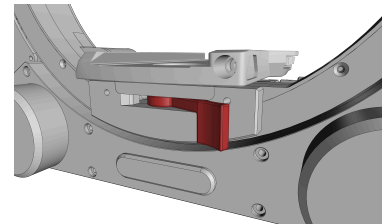
## Perceptual problem

After using the TRINITY 2 for some time, the clamping force of the side-to-side clamp under the DUB-3 plate must be **readjusted**.

**⚠ WARNING**

A too weak or loose clamping of the DUB-3 leads to **unwanted vibrations** on the **tilt axis** while the rig is booming.

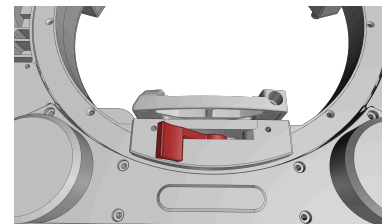
You will see that an adjustment is necessary when the silver clamping lever can be moved to the end of the housing slot.



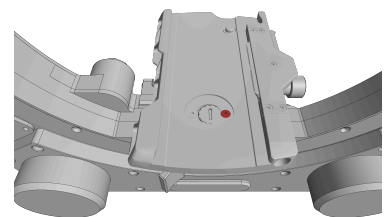
## Needed tools

- Allen key 2mm
- Screwdriver straight

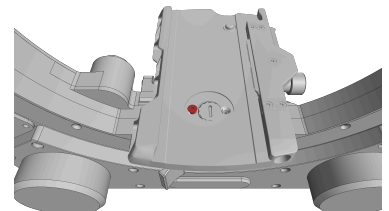
1. Open the silver clamp lever first.



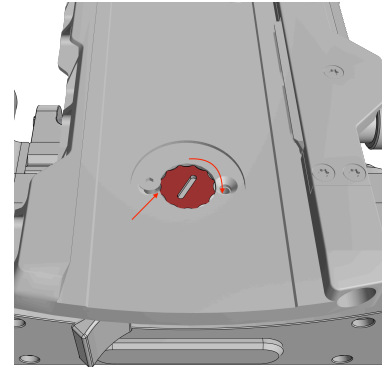
2. Use a 2mm Allen key to loosen and to remove one of the two locking screws.



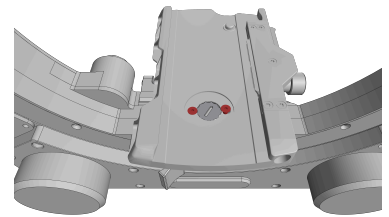
3. Loosen the second screw.  
However, the screw does not have to be removed.



4. Use a straight screwdriver and slowly turn the main clamping screw to the right until the next notch comes to rest below the locking screw.



5. Tighten both locking screws.



6. You have reached the perfect position of the clamping lever when the clamping lever is pushed to the right and the desired clamping force develops while the clamping lever reaches the position under the letter "B".

