

Mini Base Plates MBP-1, MBP-2



CONFIGURATION OVERVIEW – 6.1.0 / 2014.12

ARRI assumes no responsibility with regard to the performance or use of the products or typographical errors or inaccuracies of given information. Product specifications are subject to change without notice. For a full listing of all available components consult the price list.

Mini Base Plate MBP-1 Sets

MBP-1 DSLR Pro Set, K0.60162.0
incl. MBP-1 Pro, K0.60134.0
DSLR Riser 1, K2.65225.0
Fits to Canon 5D/7D/60D and Nikon D7000



MBP-1 Pro, K0.60134.0
MBP-1 with additional rod bracket and two pairs of 15 mm rods



MBP-1 Pan AF 101 Set, K0.60163.0
incl. MBP-1 Pro, K0.60134.0
Adapter plate MBP-1/2 Pan AF 100/101



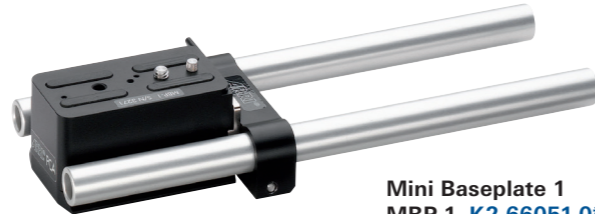
MBP-1 Sony NEX Set, K0.60164.0
incl. MBP-1 Pro, K0.60134.0
Adapter plate for Sony NEX-EA50/NEX-FS100



MBP-1 Pro BP, K0.60141.0
MBP-1 with additional rod bracket and two pairs of 15 mm rods and attachment to ARRI film style bridge plates: BP-3, BP-5, BP-8, BP-9



Mini Base Plate MBP-1



Mini Baseplate 1 MBP-1, K2.66051.0*

Fits Sony EX-1, Sony EX-3 and Panasonic HVX-200 cameras.

MBP-1 Rod Bracket upgrade Set, K0.60132.0
for additional rod bracket in the back with one pair of 15 mm rods 240 mm length (only if you want to upgrade your existing K2.66051.0 MBP-1)



MBP-1 BP Rod Bracket upgrade Set, K0.60142.0
For additional rod bracket and two pairs of 15 mm rods and attachment to ARRI film style bridge plates: BP-3, BP-5, BP-8, BP-9 (only if you want to upgrade your existing K2.66051.0 MBP-1)



*** discontinued items sales as long as stock is available**

Accessories MBP-1



Panasonic AG-AF100, K2.65249.0*



Sony NEX-EA50/NEX-FS100, K2.65258.0*



Ikonoskop a-cam dII, K2.65257.0*



DSLR Riser 1, K2.65225.0*
Fits to Canon 5D/7D/60D and Nikon D7000



DSLR Riser 2, K2.65244.0*
Fits to Canon 550D and Nikon D 3100

*** discontinued items sales as long as stock is available**

Mini Base Plate MBP-2



Mini Baseplate 2 MBP-2, K2.652167.0*

*** discontinued items sales as long as stock is available**

Accessories MBP-2



MBP-2 Baseplate Adapter for:



Canon XL-H1, K2.65169.0*



Panasonic AG-HVX200, K2.65170.0*



Sony HVR-Z1 / Z7 / FX1 / PD 170 / EX1, K2.65171.0*



Sony HVR-V1, K2.65172.0*



Sony PMW-EX3, K2.65173.0*



Panasonic AG-HPX171 E, K2.65174.0*



JVC GY-HD-100, K2.65175.0*



Sony HVR-Z5 / HXR-NX5, K2.65202.0*



Panasonic AG-AF100, K2.65249.0*

(only in combination with K2.65173.0 EX-3 Adapterplate)



Sony NEX-EA50/NEX-FS100, K2.65258.0*

(only in combination with K2.65173.0* EX-3 Adapterplate)



Ikonoskop a-cam dII, K2.65257.0*

(only in combination with K2.65173.0* EX-3 Adapterplate)



DSLR Riser 1, K2.65225.0*
Fits to Canon 5D/7D/60D and Nikon D7000

(only in combination with K2.65173.0* EX-3 Adapterplate)



DSLR Riser 2, K2.65244.0*
Fits to Canon 550D and Nikon D 3100

(only in combination with K2.65173.0* EX-3 Adapterplate)



Additional Rod Bracket for MBP-2, K2.65168.0*

*** discontinued items sales as long as stock is available**

Bridge Plate Sled

Bridge Plate Sled BPS-2 Set, K0.60216.0
includes:



Bridge Plate Sled BPS-2, K2.66260.0



Bottom Dove Tail Plate, K2.0000324

Support



Zip Gear LS-11 Set, K0.60140.0
For a second attachment of DSLR cameras on the rods; consists of 3 zip gears cpl and LS-11 (without rods)



LS-11 Lens Support, K2.66141.0

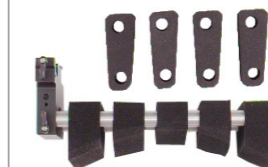


Lens Support Pin LSP-1 (incl. 2 pcs. 1/4" to 3/8" adapter), K2.66145.0

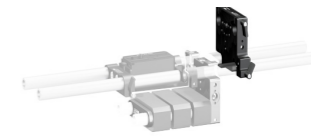


Lens Support Pin LSP-2 (with 3/8" thread) K2.66220.0

LWS Shoulder Support

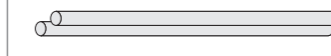


Universal Shoulder Pad for 15mm rods USP-2, K2.66209.0
(incl. UMB-1 and straight foam)

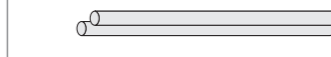


Universal Mounting Bracket for 15mm rods (UMB-1), K2.66168.0

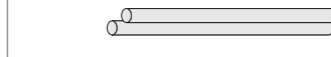
15 mm Studio Rods



540 mm, K2.72029.0
stainless steel



440 mm, K2.0001031
stainless steel



340 mm, K2.66252.0
stainless steel, lightweight



240 mm, K2.66253.0
stainless steel, lightweight



140 mm, K2.66254.0
stainless steel, lightweight