

## Configuration Overview | 1.2.1 / 2024.01

### ALEXA Mini LF



**ALEXA Mini LF Ready to Shoot Set V, [K0.0024313](#)**  
**ALEXA Mini LF Ready to Shoot Set Gold, [K0.0024312](#)**

includes:

- K1.0024074 1x ALEXA Mini LF camera body
- K2.0018983 1x ARRI LPL Mount (LBUS)
- K2.0016936 1x ARRI PL-to-LPL Adapter
- K2.0024130 2x Codex Compact Drive 1TB (CA08-1024)
- K2.0020916 1x ALEXA Mini LF Multi Viewfinder MVF-2
- K2.0023915 1x Cable VF (0.35m/1.15ft)
- K2.0023943 1x Cable VF (0.5m/1.5ft)
- K2.0023839 1x Mini Adapter Plate MAP-2A
- K2.0006140 1x Mini Viewfinder Bracket MVB-1
- K2.73002.0 1x Center Camera Handle CCH-2
- K2.0023546 1x Mini Side Bracket MSB-3
- K2.0014957 1x Mini Side Bracket MSB-2
- K2.0014894 1x Compact Bridge Plate CBP-1 19mm
- K2.0013937 1x Rear Accessory Bracket RAB-1
- K2.0023406 1x RAB-1 Clamp 2
- K2.0006186 1x Rod Mounting Bracket RMB-3
- K2.66255.0 1x 15mm Reduction Insert
- K2.0015896 1x Bottom Dovetail Plate 300mm/12in
- K2.75007.0 1x AMIRA Power Cable Straight 2m/6.6in KC-50
- Set V:** K2.0014530 1x V-mount Power Splitting Box MkII
- Set G:** K2.0014532 1x Gold Mount Power Splitting Box Mk II

OR

for further sets please see current price list

**Antenna Video/ECS, [K2.0014568](#)**



### ALEXA Mini LF Viewfinder

**ALEXA Mini LF MVF-2 Set**

K0.0024311, includes:

- K2.0020916 1x Multi Viewfinder MVF-2
- K2.0023915 1x Cable VF (0.35m/1.15ft)
- K2.0023943 1x Cable VF (0.5m/1.5ft)



**Heated Eycup, HE-7**  
K2.0003898 (below 0°C)



**Cable VF (0.35m/1.15ft),** K2.0023915  
**Cable VF (0.5m/1.5ft),** K2.0023943  
**Cable VF (2m/6.5ft),** K2.0023944  
**Cable VF (10m/33ft),** K2.0023945

### ALEXA Mini LF Media and Readers

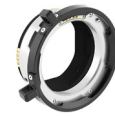


For details regarding Recording Medias please see Configuration Overview 1.9.0

### Lens Mounts and Adapter



**ARRI LPL Mount (LBUS)** [K2.0018983](#)



**ARRI PL to LPL Adapter**  
[K2.0016936](#)



**ARRI EF Mount (LBUS),** [K2.0019965](#)

### CCM-1 Camera Control Monitor



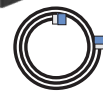
**Camera Control Monitor CCM-1 Set,**

[KK.0048851](#), includes  
[K2.0048523](#) 1x CCM-1 with Foldable Sunhood, Screen Protector  
[K2.0048394](#) 1x Monitor Arm for Camera MAC-1  
[K2.0023943](#) 1x Cable VF (0.5m/1.5ft)  
[K2.0001637](#) 1x Cable RS - RS/PWR IN (0.5m/1.6ft)

### Electronic Accessories



**Transvideo Starlite HD5-ARRI 5" OLED Monitor** [K2.0006960](#)



**Starlite HD5 ARRI Ext cable angled,** [K2.0008662](#)  
**Starlite HD5 ARRI Ext cable straight,** [K2.0008663](#)



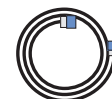
**Transvideo Starlite ARRI-WVS**  
[K2.0015243](#)



**General Purpose IO Box GPB-1,** [K2.0007642](#) (cable incl.)



**GPB-1 Mounting Bracket,** K2.0008533



**Cable ALEXA Mini/AMIRA EXT to GPB-1,** [K2.0007736](#)

### Splitting Boxes and Adapter Plates



**B-Mount Adapter Plate**  
[K2.0024113](#)



**B-Mount Power Splitting Box,** [K2.0024114](#)



**Amicro Power Splitting Box,** [K2.0024115](#)



**Vmicro Power Splitting Box**  
[K2.0024116](#)



**V-mount Power Splitting Box MkII,** [K2.0014530](#)



**V-Mount Adapter Plate Mk II for ALEXA Mini,** [K2.0014531](#)



**Gold Mount Power Splitting Box Mk II,** [K2.0014532](#)



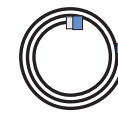
**Gold Mount Adapter Plate Mk II for ALEXA Mini,** [K2.0014533](#)



**V-mount battery plate with hot-swap buffer,** [K2.0015840](#)



**Gold-mount battery plate with hot-swap buffer,** [K2.0015859](#)



**Power Cable Smart APU to ALEXA Mini 6' (1.85m),** K2.0015861  
**Power Cable Smart APU to ALEXA Mini 2.6' (0.80m),** K2.0015862  
**Power Cable Smart APU to ALEXA Mini (0.25m),** K2.0015863

no pic available yet

**Top support rod bracket 15mm LWS**  
K2.0015865

### Cables & Power Supply

**ARRI Power Supply Light 24V** K2.0034493



**Power Cable Straight KC-50 (2m, 6.6 feet),** [K2.75007.0](#)

**Ethernet Cable 3m KC 153-S,** [K2.72021.0](#)

**ALEXA Mini LF Audio connector with cable,** K2.0023988

**ALEXA Mini EXT to LCS,** [K2.0007624](#)

**ALEXA Mini EXT to EXT cable 1,5m (59 inch),** K2.0009051

**EXT-RS Adapter,** [K2.0006170](#)



### Electronic Control System



**cforce plus (Basic Set)**  
[K0.0010103](#)



**cforce mini (Basic Set)**  
[K2.0006355](#)



**Master Grip Left Wheel MLW-1,** [K2.0009363](#)



**Master Grip Right Rocker MRR-1,** [K2.0009493](#)



**Single Axis Unit, SXU-1**  
[K2.0000071](#)  
**Plain White Focus Ring**  
[K2.72117.0](#)



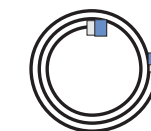
**Operator Control Unit OCU-1 Basic Set,** [K2.0020002](#)



**Ultrasonic Distance Measure UDM-1 Set**  
[K0.60055.0](#)



**LCUBE CUB-1,** [K0.0010104](#)  
LBUS cables need to be ordered separately



**LBUS 0.2m/8",** [K2.0006749](#)  
**LBUS 0.3m/1ft,** [K2.0006750](#)  
**LBUS 0.5m/1.5ft,** [K2.0006751](#)  
**LBUS 0.8m/2.5ft,** [K2.0006752](#)  
**LBUS 1.5m/5ft,** [K2.0006753](#)  
**LBUS 3m/10ft,** [K2.0006754](#)  
**LBUS 6m/20ft,** [K2.0006755](#)  
**LBUS 15m/49ft,** [K2.0006756](#)

**Cable LBUS to D-Tap 1.2m/4ft,** [K2.0006757](#)  
**Cable LBUS to D-Tap 0.8m/2.5ft,** [K2.0006758](#)  
**Cable LBUS to RS 0.8m/2.5ft,** [K2.0006759](#)  
**Cable LBUS to XLR-4 0.8m/2.5ft,** [K2.0006760](#)