

ALEXA LF Camera Sets



ALEXA Pro Camera Sets contain an ALEXA camera, sufficient media and a number of must-have accessories to get you up and shooting quickly.

ALEXA LF Basic Camera Set, [K0.0019228](#)

- Includes:
- K1.0014861 1x ALEXA LF camera body
 - K2.0008429 1x Codex SXR Capture Drive Adapter
 - K2.0006338 1x Codex SxS to SXR Adapter
 - K2.72018.0 1x Transcend SD card
 - K2.72008.0 1x ALEXA Electronic Viewfinder EVF-1
 - K2.74001.0 1x Viewfinder Mounting Bracket VMB-3
 - K2.72012.0 1x Viewfinder Cable Short (0.35m/1.2ft) KC 150-S
 - K2.72007.0 1x Center Camera Handle (CCH-1)
 - K2.0016936 1x ARRI PL-to-LPL Adapter
 - KK.0015010 1x Wireless Video Receiver WVR-1, Basic Set

ALEXA LF Pro Camera Set, 1 TB, [KB.72010.D](#)

- Includes:
- K0.0018830 1x ALEXA LF Basic Camera Set for Pro Set (1 TB)
 - K2.0006942 4x SXR Capture Drive 1TB
 - K2.0018790 1x ALEXA LPL LF FSND Filter Set, Full
 - K0.71030.0 1x ALEXA Bundle Accessory Set (EV/Plus/W/LF)

ALEXA LF Pro Camera Set, 2 TB, [KB.72020.D](#)

- Includes:
- K0.0018832 1x ALEXA LF Basic Camera Set for Pro Set (2 TB)
 - K2.0006157 4x Codex SXR Capture Drive 2TB
 - K2.0018790 1x ALEXA LPL LF FSND Filter Set, Full
 - K0.71030.0 1x ALEXA Bundle Accessory Set (EV/Plus/W/LF)

ALEXA LF Pro Camera Set (SxS Pro+ 256 GB), [KB.72030.D](#)

- Includes:
- K0.0018833 1x ALEXA LF Basic Camera Set for Pro Set, SxS Pro+ 256 GB
 - K2.0014951 5x Sony SxS PRO+ Card 256GB
 - K2.0018790 1x ALEXA LPL LF FSND Filter Set, Full
 - K0.71030.0 1x ALEXA Bundle Accessory Set (EV/Plus/W/LF)

ALEXA Bundle Accessory Set (EV/Plus/W/LF), [K0.71030.0](#)

- Includes:
- K2.72021.0 1x Cable ALEXA ETH/RJ45 (3.0m/9.8ft) KC 153-S
 - K2.72017.0 1x Leveling Block LB-1
 - K2.74000.0 1x Viewfinder Extension Bracket VEB-3
 - K2.66172.0 1x Bridge Plate Adapter BPA-2
 - K2.72031.0 1x ALEXA 12V Accessory Cable KC 154-SP-S
 - K2.72083.0 1x Shoulder Pad SP-4
 - K2.72013.0 1x Viewfinder Cable Medium (0.65m/2.1ft) KC 151-S
 - K2.72015.0 1x Handle Extension Block HEB-2

Note 1: Docks or on-board battery adapters are not included and can be ordered separately.
 Note 2: For use with LF FSND filters, the included FSND shim has to be installed to assure proper flange focal depth.

Viewfinder System



ALEXA Electronic Viewfinder EVF-2, K2.008397

- Viewfinder Cable
 35 cm, KC 150-S [K2.72012.0](#)
 65 cm, KC 151-S [K2.72013.0](#)



Viewfinder Extension Bracket VEB-3, [K2.74000.0](#)



Viewfinder Mounting Bracket, VMB-3 [K2.74001.0](#)



Heated Eycup, HE-7
 K2.0003898

LPL Mounts



ARRI LPL Mount ALEXA
[K2.0019072](#)



ARRI PL to LPL Adapter
[K2.0016936](#)

Media & Adapters



For details regarding Recording Medias please see Configuration Overview 1.9.0

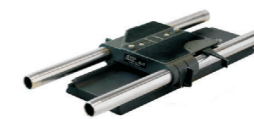
Accessories



Remote Control Unit RCU-4, K2.72036.0 (incl. ALEXA Ethernet Remote Cable (2m/6.6ft) KC 157-S K2.72040.0)



Transvideo Starlite ARRI-WVS
[K2.0015243](#)



Bridge Plate Set BP-8, 19mm rods, K2.47090.0
 BP-9, 15mm rods, K2.47091.0
 BPA-2 needed



Bridge Plate Adapter BPA-2 (for BP-3, 5, 8 or 9)
[K2.66172.0](#)



Universal Adapter Plate UAP-1
[K2.72102.0](#)



Wedge Adapter, WA-1 (for Quick Release HD-Baseplate) [K2.72002.0](#) (spare)



Quick Release HD Baseplate
[K2.47796.0](#)



Shoulder Pad SP-4
[K2.72083.0](#)



Rod Mounting Bracket RMB-2, [KK.0005807](#)



Centre Camera Handle CCH-1, [K2.72007.0](#) (spare)



Side Camera Handle, SCH-1 [K2.72016.0](#)



Adjustable Center Grip tall, ACG-2, [K2.72022.0](#)



Handle Extension Block HEB-1 (without tape hook)
[K2.0001016](#)

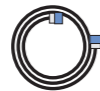


Handle Extension Block HEB-2 (with tape hock)
[K2.72015.0](#)



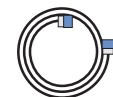
ALEXA Handgrip Set
 K0.71033.0

Cables



- Cable LCS (5p) - LBUS (0.8m/2.6ft) - [K2.0007318](#)
- ALEXA 12V Accessory Cable KC 154-SP-S, [K2.72031.0](#) (coiled)
- ALEXA Ethernet Cable 3m KC 153-S, [K2.72021.0](#)
- ALEXA EXT - EXT Cable 2m KC 155-S, [K2.72032.0](#)
- ALEXA Ethernet-Ethernet Cable 2M KC 156-S, [K2.72033.0](#)
- ALEXA Ethernet Remote Cable (1m/3.3ft) KC 158-S, [K2.72041.0](#)
- ALEXA Ethernet Remote Cable (2m/6.6ft) KC 157-S, [K2.72040.0](#)

ALEXA Ethernet Extension Cable (15m/50ft) for RCU-4 KC 159-S, [K2.72043.0](#) (up to three KC-159-S for total length of 47m/154ft with [K2.72040.0](#) or 46m/151ft with [K2.72041.0](#))



- Power Cable KC-20 [K2.41966.0](#)
- KC-29 [K2.44693.0](#) (coiled)

Power Supply & Battery Adapter



Battery Adapter Back Hi-Load BAB-HV V-mount for ALEXA LF [K2.0019453](#)



Battery Adapter Back Hi-Load BAB-HG Gold-Mount for ALEXA LF, [K2.0019456](#)



Hawk-Woods RP-CFA1 Battery Adapter [K2.0019383](#)



B-Mount Adapter ALEXA BMM-24-ALEX [K2.0038613](#)



ARRI Power Supply Light 24V [K2.0034493](#)



Camera Handgrip Right, [K2.45886.0](#)



Extension for Handgrip [K2.47136.0](#)



Leveling Block LB-1, [K2.72017.0](#)



Ultrasonic Distance Measure UDM-1 Set [K0.60055.0](#)
 Cable UDM-ALEXA K2.65261.0



Ext Distribution Box EDB-1
 K2.72038.0



ALEXA LF/ALEXA SXT W Case
[K2.0015098](#)