

Focus & Zoom Controller SRH-3 & SRH-360

Installation Guide

Date 20.02 2020



Imprint

Copyright © 2018 Arnold & Richter Cine Technik GmbH & Co. Betriebs KG.

All rights reserved.

No parts of this document may be reproduced without prior written consent of Arnold & Richter Cine Technik GmbH & Co. Betriebs KG. Specifications are subject to change without NOTE. Errors, omissions, and modifications excepted.

ARRI, ALEXA, AMIRA, LDS and LENS DATA SYSTEM are trademarks or registered trademarks of Arnold & Richter Cine Technik GmbH & Co. Betriebs KG. All other brands or products are trademarks or registered trademarks of their respective holders and should be treated as such. Original version.

For further assistance:

Arnold & Richter Cine Technik GmbH & Co. Betriebs KG

Türkenstr. 89

80799 München

Germany

www.arri.com

Document revision history

Version	Order Nr	Release	Date
1.1	K4.0020165	F6606	20.02.2020

Scope

This document describes the components and the setup of the SRH-3 & SRH-360 Stabilized Remote Head system and its components.

Disclaimer

Before using the products described in this manual, be sure to read and understand all the respective instructions.

Otherwise the customer must contact ARRI before using the product.

While ARRI endeavors to enhance the quality, reliability and safety of their products, customers agree and acknowledge that the possibility of defects thereof cannot be eliminated entirely. To minimize the risk of damage to property or injury (including death) to persons arising from defects in the products, customers must incorporate sufficient safety measures in their work with the system and heed the stated conditions of use.

ARRI or its subsidiaries do not assume any responsibility for losses incurred due to improper handling or configuration of the TRINITY or other system components.

ARRI assumes no responsibility for any errors that may appear in this document. The information is subject to change without NOTICE.

For product specification changes after this manual was published, refer to the latest published ARRI data sheets or release notes, etc., for the most up-to-date specifications.

Not all products and/or types are available in every country. Please check with an ARRI sales representative for availability and additional information.

Neither ARRI nor its subsidiaries assume any liability for infringement of patents, copyrights or other intellectual property rights of third parties by or arising from the use of ARRI products or any other liability arising from the use of such products. No license, express, implied or otherwise, is granted under any patents, copyrights or other intellectual property right of ARRI or others.

ARRI or its subsidiaries expressly exclude any liability, warranty, demand or other obligation for any claim, representation, cause, action, or whatsoever, express or implied, whether in contract or not, including negligence, or incorporated in terms and conditions, whether by statute, law or otherwise. In no event shall ARRI or its subsidiaries be liable for or have a remedy for recovery of any special, direct, indirect, incidental, or consequential damages, including, but not limited to lost profits, lost savings, lost revenues or economic loss of any kind or for any claim by a third party, downtime, good-will, damage to or replacement of equipment or property, any cost or recovery of any material or goods associated with the assembly or use of our products, or any other damages or injury of the persons and so on or under any other legal theory.

In the event that one or all of the foregoing clauses are not allowed by applicable law, the fullest extent permissible clauses by applicable law are validated.

Table of Contents

1 For your safety	4
2 Installation	5
3 Assigning the Controllers	7

1 For your safety

Warning

The SRH-3 system and products should only be used by experienced and trained operators. This product is NOT designed for inexperienced users and should not and must not be used without proper training.

ARRI recommends that all users of the SRH-3 and SRH-360 system read the manual in its entirety prior to use.

All directions are given from a camera operator's point of view. For example, camera-right side refers to the right side of the camera when standing behind the camera and operating it in a normal fashion.

The appendix at the back of the manual contains useful reference material including specifications, connector pin-out diagram.

Before use, please ensure that all users comprehensively read, understand, and follow the instructions in this document.

1.1 Risk Levels and Alert Symbols

Safety warnings, safety alert symbols, and signal words in these instructions indicate different risk levels:

DANGER

Danger indicates an imminent hazardous situation which, if not avoided, **will result in** death or serious injury.

Warning

WARNING indicates a potentially hazardous situation which, if not avoided, **may result in** death or serious injury.

CAUTION

CAUTION indicates a potentially hazardous situation which, if not avoided, **may result in** minor or moderate injury.

NOTICE

NOTE explains practices not related to physical injury. No safety alert symbol appears with this signal word.

NOTE

Provides additional information to clarify or simplify a procedure.

2 Installing the Controllers

⚠ CAUTION

Disconnect any power supply from the remote panel.

2.1 Preparation

NOTE

Unscrew and remove the joystick handle first.



2.2 Dismantling the covers

NOTE

A T10 Torx screwdriver is needed for the next steps.

Remove the 4 screws from each cover on the left side of the remote control, and then remove both covers.



2.3 Dismantling the bottom plate

Turn the panels over and remove the six Torx screws.



2.4 Preparing the connections

NOTE

The Focus and Zoom controllers are „Daisy Chained“ with each other. This means that first the focus wheel is connected to the Zoom Rocker and then the Zoom Rocker is connected to the main board.

Connect the bus cable carefully to any of the two four pin ports of the focus wheel board.

DANGER

Do not pull on the cable!



2.5 Mounting and connecting the Focus Wheel controller

NOTE

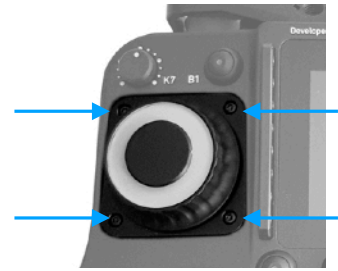
The shape of both modules will guide the alignment of the single controllers.



This means that the modules cannot be installed incorrectly.

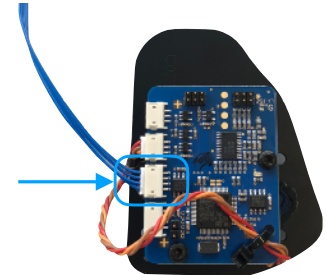
Place the Focus Wheel at the upper position.

Place the four Torx screws and tighten them.



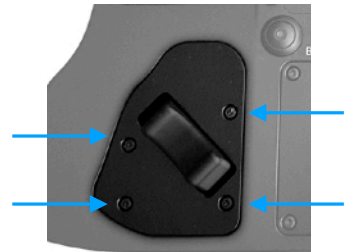
2.6 Connecting and mounting the zoom controller

Connect the bus cable to any of the two four pin ports of the Focus Wheel board.

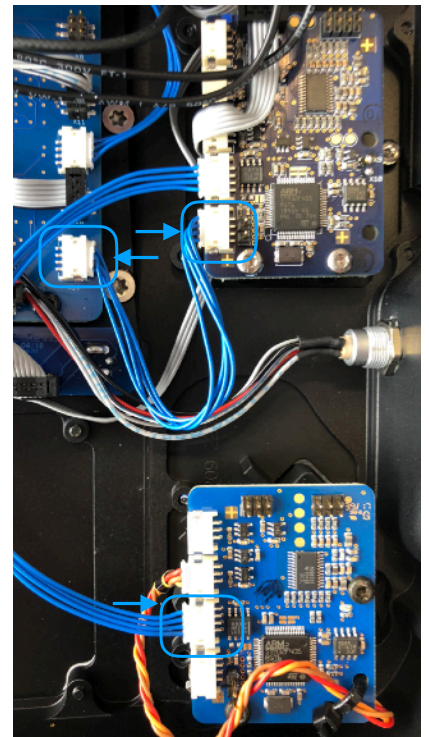


Place the Zoom Rocker at the lower position.

Place the four Torx screws and tighten them.



Connect the bus cable which comes from the Focus Wheel board to the Zoom Rocker board.



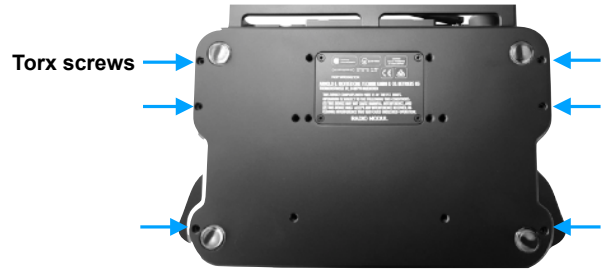
2.7 Connecting the controllers to the main board

Connect the second bus cable either with the focus or zoom board and then with the 4pin socket at the lower right corner of the mainboard.

2.8 Attaching the bottom cover

Turn the panels over and place the bottom cover on the housing.

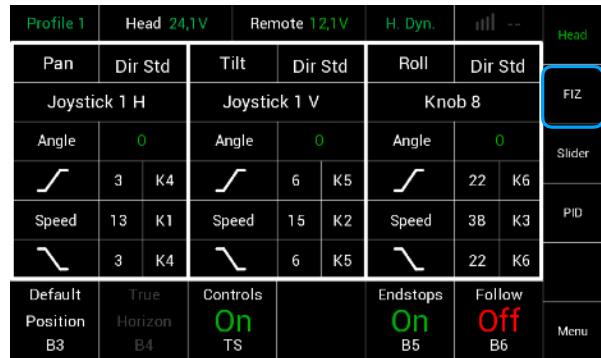
Place the Torx screws and tighten the screws evenly.



3 Assigning the new controllers

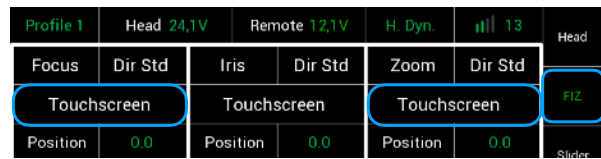
3.1 Changing into the FIZ menu

The **FIZ home screen** can be reached by Selecting **FIZ** in the Home Screen.



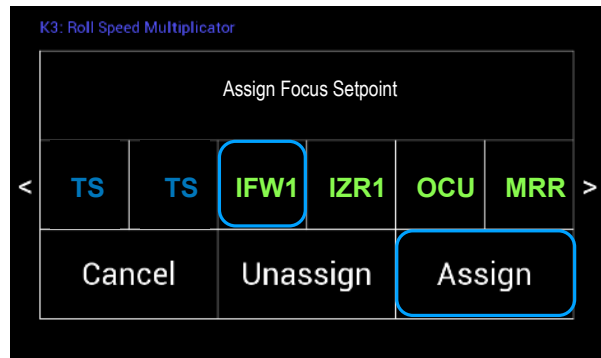
The **FIZ home screen** allows to assign the wanted controllers by Selecting the marked areas.

Selecting the **marked area** will open a new touchscreen display menu, where the desired controllers can be selected and assigned.



3.1 Assigning Focus

Use the arrows at the side to see all available controllers. Touch the **IFW1** (internal focus wheel 1) and press **Assign**.



3.2 Assigning Zoom

Use the arrows at the side to see all available controllers. Touch the **IZR1** (internal zoom rocker 1) and press **Assign**.

