



ARRI Stage London

Fully equipped LED volumetric stage for mixed reality productions

The ultimate creative environment

ARRI has partnered with Creative Technology to provide a purpose-built mixed reality/virtual production stage. The facility brings together a state-of-the-art LED volume with creative software platforms, camera-tracking systems, and powerful media servers to enable real-time MR productions.





Volume key features

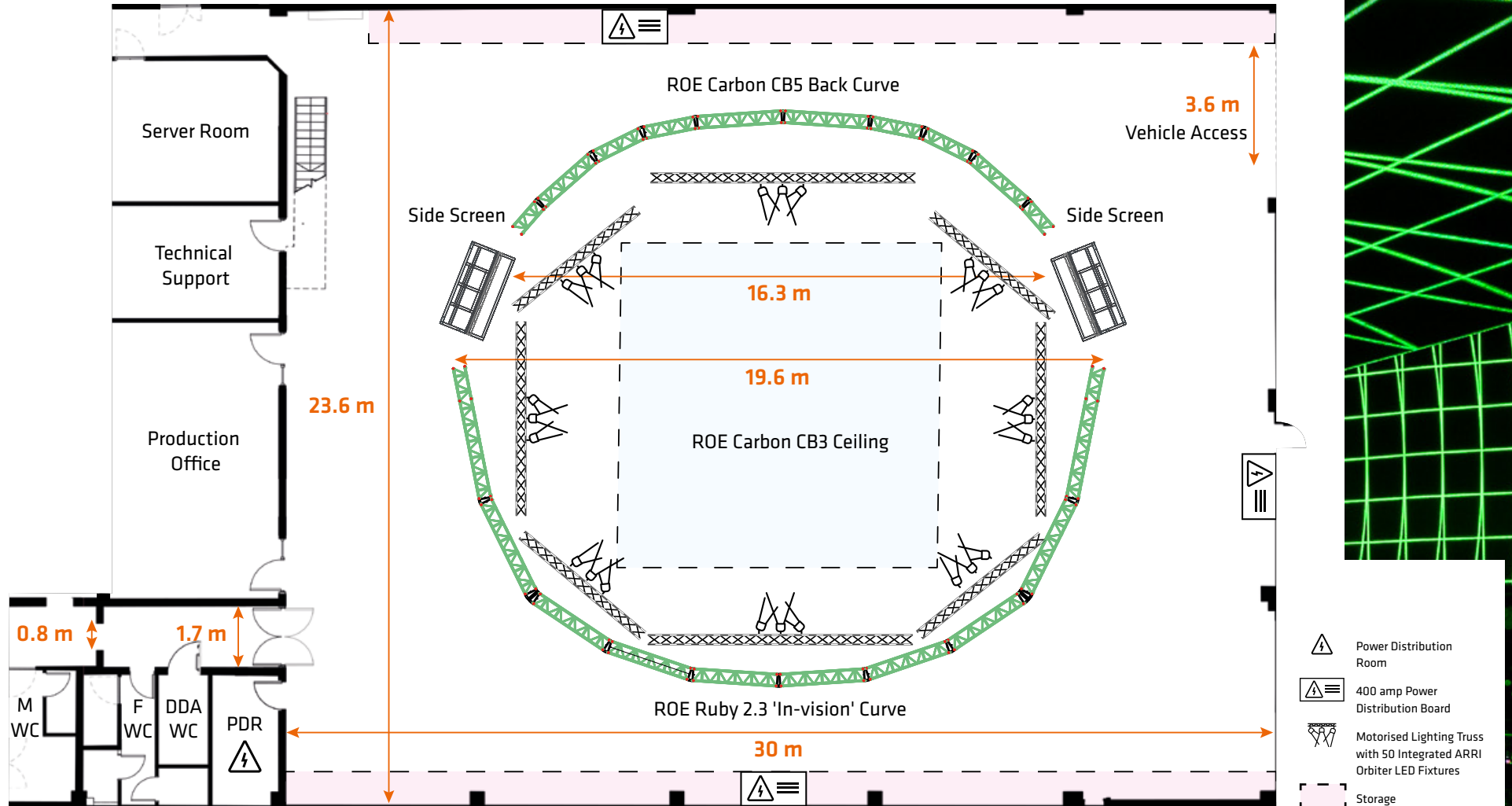
- ROE Visual wraparound LED volume, comprising main 'in-vision' curve, moveable side sections with tilt function, and back curve.
- 9.6 m x 9.6 m dynamic height-adjustable and tiltable ROE Visual LED ceiling, made up of four sections that work independently of one another.
- Powerful media servers running Unreal Engine natively for real-time rendering and mapping of virtual 3D environments. 2D based workflow also available on request.
- Both outside-in and inside-out camera tracking solutions available.
- Technical support, preproduction, and creative production services.
- In-house expertise available for testing and consultation.

Stage key features

- Dedicated 708 sq m (7,621 sq ft) blacked-out stage with sound-dampened ceiling.
- Steel ceiling grid with high load capacity, suitable for wire work and complex rigging.
- IP-based lighting control network with 50 integrated ARRI Orbiter LED fixtures mounted to motorised lighting truss.
- Production office.
- Serving kitchen with dining area.
- Styling/dressing room.
- Hair/makeup room with three styling stations.
- Viewing lounge overlooking the stage floor and volume.
- Dedicated second-floor VIP suite, featuring a lounge with a view over the volume, en-suite bathroom, and dressing room.
- 3.6 m wide drive-in roller shutter access.
- Camera and grip equipment packages, as well as supplementary lighting available from ARRI Rental.
- Complimentary high-speed WiFi throughout.
- Storage space and lockers.
- COVID-compliant environment, featuring air quality management and filtration system.
- Washroom facilities and showers.
- On-site parking.



Stage floor and volume layout



Technical details

VOLUME DIMENSIONS & HARDWARE

'In-vision' curved wall: 30 m wide x 5 m high (98.4 ft x 16.4 ft)

Diameter of curve: 19.63 m (64.4 ft)

LED panels: ROE Ruby 2.3

Max. brightness: 1,500 nits

Pixel count: 12,960 x 2,160

Processor: Megapixel VR HELIOS 8K

Side sections: 3 m wide x 4.2 m high (9.84 ft x 13.8 ft)

LED panels: ROE Carbon CB5

Max. brightness: 6,000 nits

Pixel count: 520 x 728

Processor: ROE Evision 4K

Back curved wall: 18 m wide x 4.2 m high (59.1 ft x 13.78 ft)

Diameter of curve: 16.33 m (53.6 ft)

LED panels: ROE Carbon CB5

Max. brightness: 6,000 nits

Pixel count: 3,120 x 728

Processor: ROE Evision 4K

Ceiling: 9.6 m x 9.6 m (31.5 ft x 31.5 ft)

LED panels: ROE Carbon CB3

Max. brightness: 1,500 nits

Pixel count: 2,560 x 2,560

Processor: Brompton Tessera SX40 4K



STAGE FLOOR DIMENSIONS

Total area: 708 sq m (7,621 sq ft)

Length: 30 m (98.43 ft)

Width: 23.6 m (77.43 ft)

Height to stage ceiling: 8 m (26.25 ft)

Height to volume ceiling when raised to highest point: 5.5 m (18.04 ft)

GROUND FLOOR PRODUCTION OFFICE

4.9 m x 2.2 m (16.08 ft x 7.22 ft)

DRIVE-IN ROLLER SHUTTER

3.6 m wide x 4.5 m high (11.81 ft x 14.76 ft)

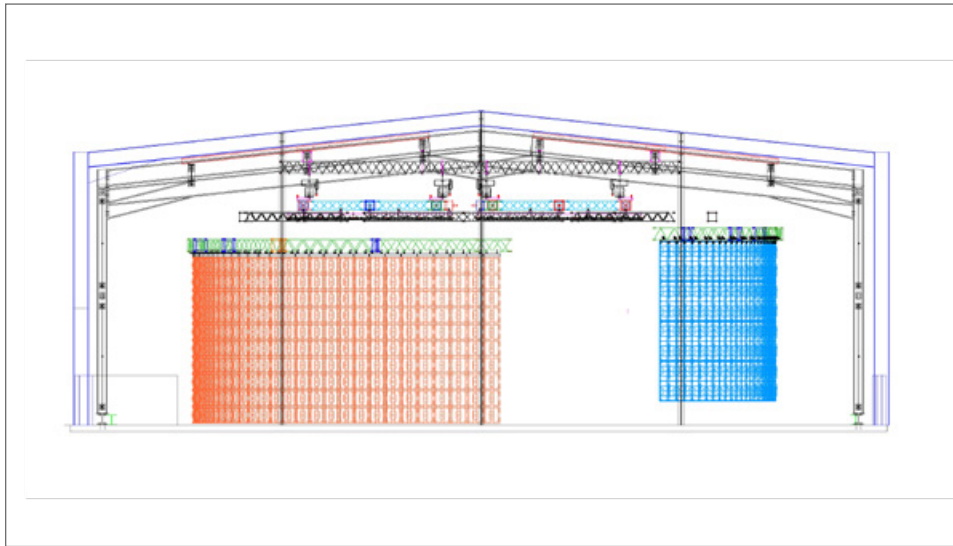
POWER

1200 amp (400 amp/phase)

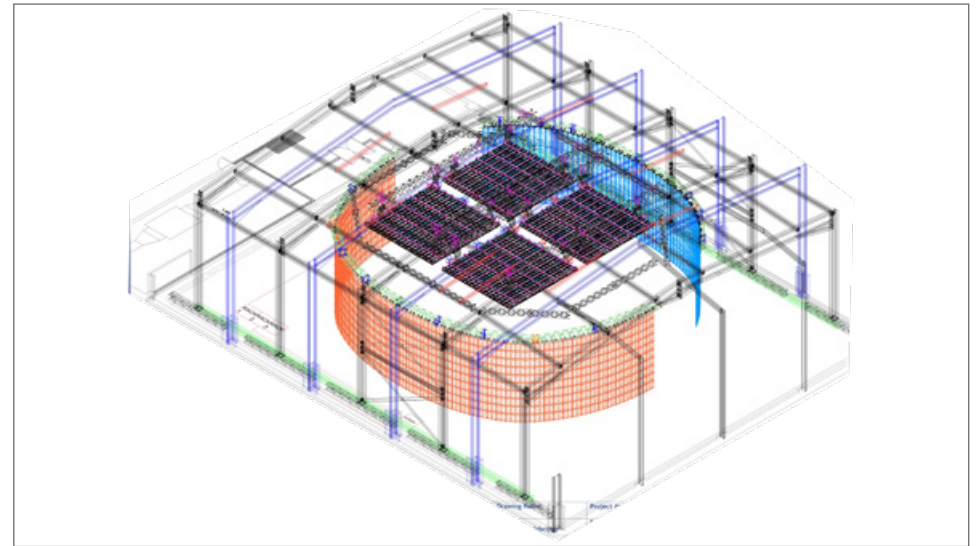
Distributed via 3x 400 amp Powerlock boards

Additional distribution and cable protection ramps supplied as required

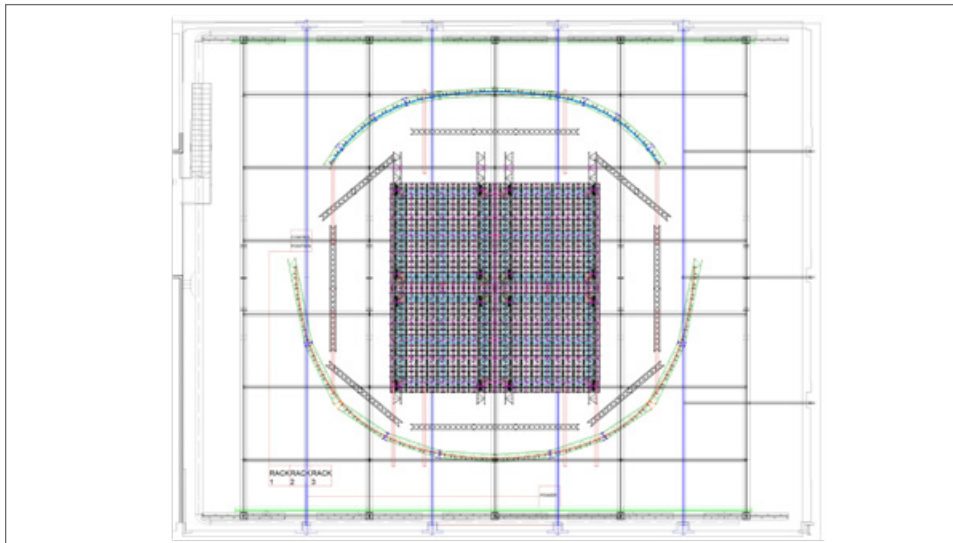
Detail view



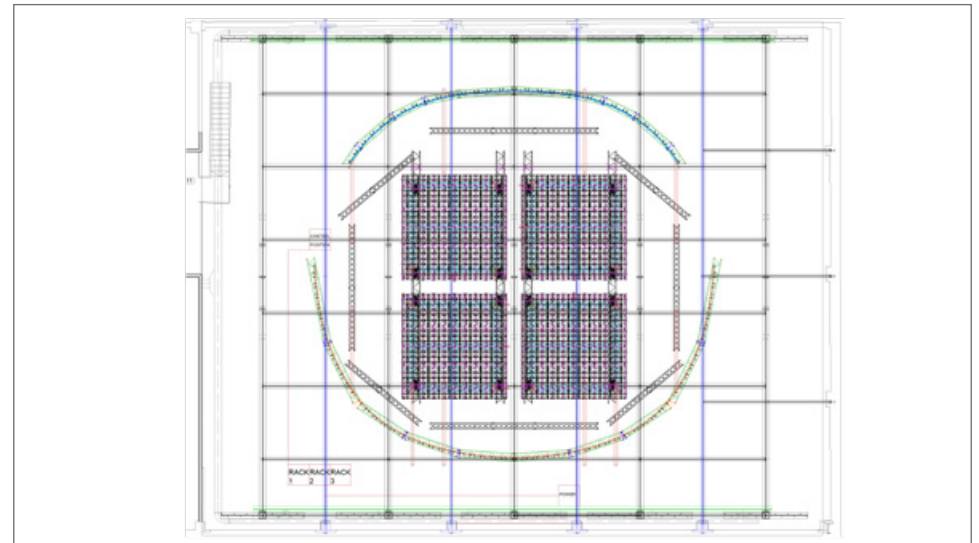
Side view of 'in-vision' curve (orange) and back curve (blue).



Overhead view of volume and stage - 'in-vision' curve shown in orange and back curve in blue, with ceiling quad split.



Top view of volume ceiling with quad closed.



Top view of volume ceiling with quad split.

Comfortable production spaces

Complementing the stage is an office space on the ground floor, with a further suite of furnished production accommodation located over the first and second floors.



Second floor VIP lounge



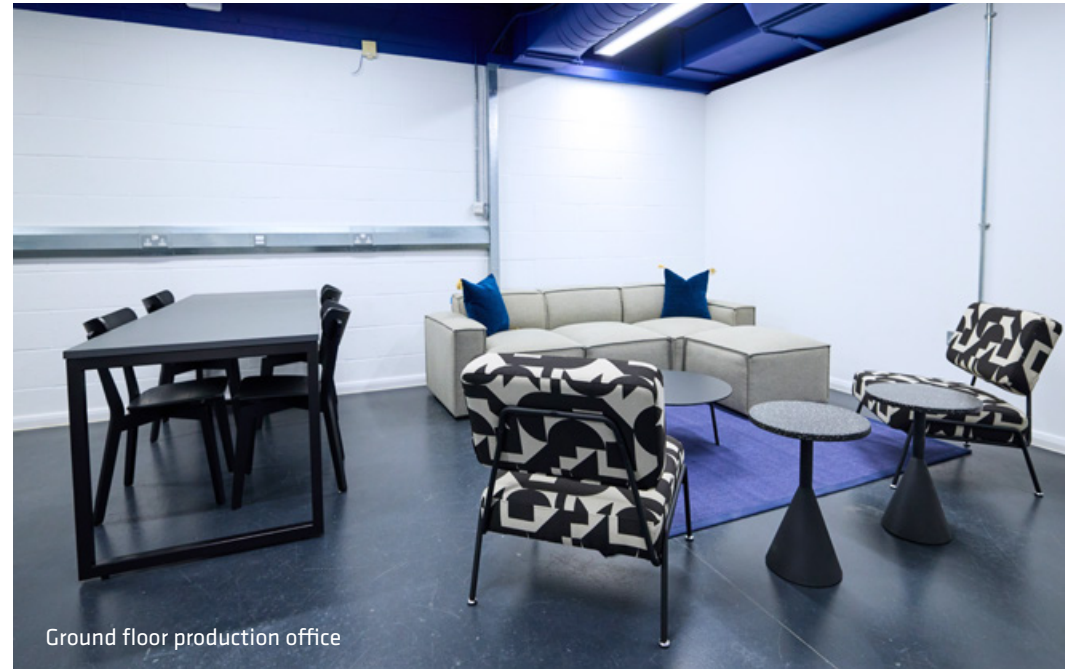
Styling/dressing room



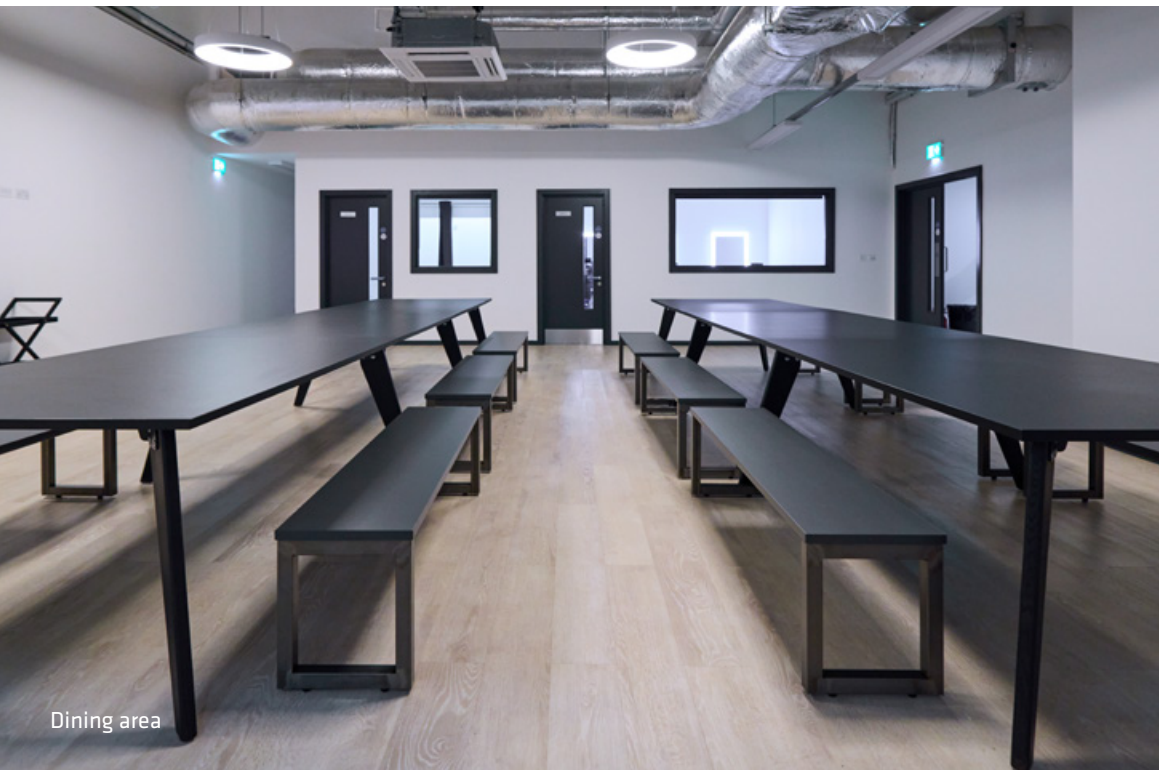
Second floor VIP en-suite bathroom



Hair and makeup



Ground floor production office

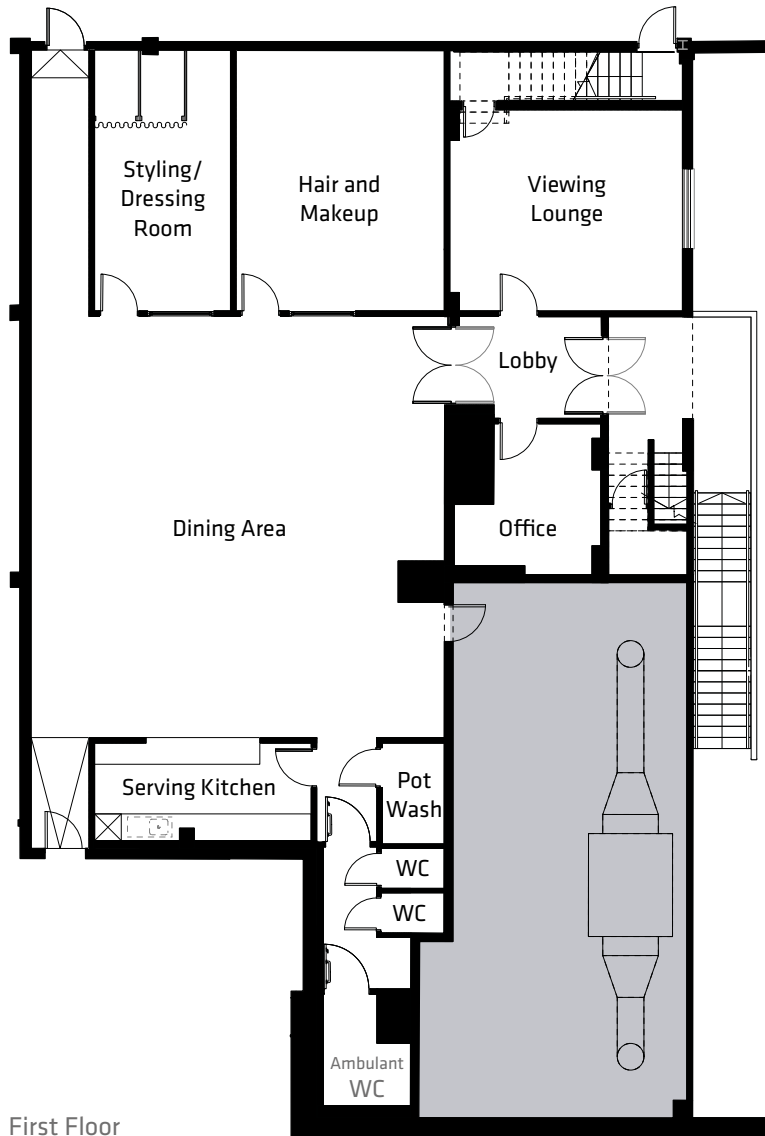


Dining area

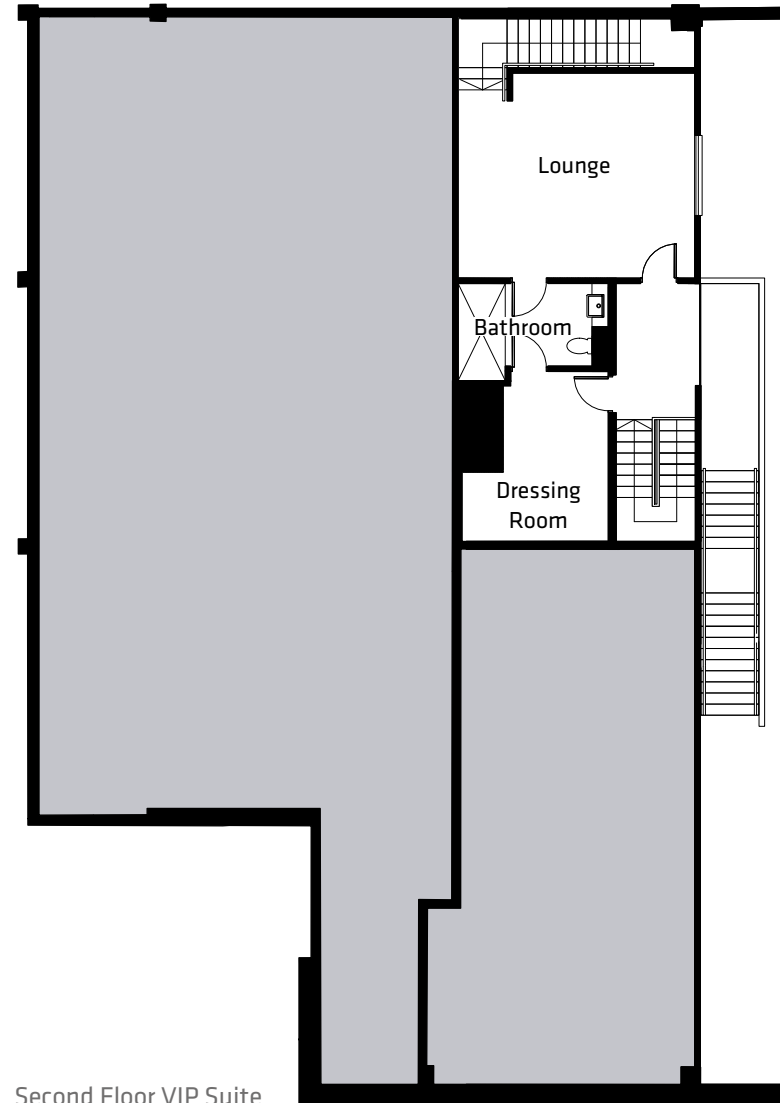


Serving kitchen

First and second floor layout



First Floor



Second Floor VIP Suite



First floor viewing lounge

SERVING KITCHEN

4.9 m x 2.2 m (16.08 ft x 7.22 ft)

Equipped with fridge/freezer and microwave. Adjacent pot wash houses a dishwasher, washing machine, and tumble dryer.

DINING AREA

9.3 m x 9.5 m (30.51 ft x 31.71 ft)

STYLING/DRESSING ROOM

3 m x 5.8 m (9.84 ft x 19.03 ft)

Fitted with two built-in changing cubicles.

HAIR AND MAKEUP

4.7 m x 5.8 m (15.42 ft x 19.03 ft)

Provides a backwash sink and three styling stations. Each station features color temperature control lighting, storage, and fully adjustable chair.

VIEWING LOUNGE

5 m x 4.5 m (16.4 ft x 14.76 ft)

Floor to ceiling window overlooking the volume.

SECOND FLOOR VIP SUITE

Lounge: 5.3 m x 4.6 m (17.39 ft x 15.09 ft)

Floor to ceiling window overlooking the volume.

En-suite bathroom: 3 m x 1.8 m (9.84 ft x 5.9 ft)

Dressing room: 3.3 m x 3.8 m (10.83 ft x 12.47 ft)



ARRI Stage London

2 Highbridge, Oxford Road, Uxbridge Middlesex, UB8 1LX
United Kingdom

Booking enquiries

Email: stage@arri-gb.com
Phone: +44 (0)1895 457000

Located at ARRI's UK premises in Uxbridge, West London, within a secure gated business park, ARRI Stage London is close to the A40, M25 and M4, offering excellent links to central London, the national motorway network, and Heathrow airport. The stage is also just a short walk from Uxbridge Tube station, which offers access to the Metropolitan and Piccadilly lines.