

# Battery-Mount-Adapters

K2.72003.0 Gold-Mount Back

K2.72006.0 Gold-Mount Top

K2.72010.0 V-Mount Back

K2.72011.0 V-Mount Top

INSTRUCTION MANUAL

Revision 3, February 2011

# 1. Table of Contents

<b>1. Table of Contents</b> .....	<b>2</b>
<b>2. Safety Instructions and Legal Disclaimer</b> .....	<b>3</b>
2.1 Safety Instructions .....	3
2.2 Legal Disclaimer .....	4
<b>3. New connector for back mount battery adapters</b> .....	<b>5</b>
<b>4. Gold-Mount Adapter Back</b> .....	<b>6</b>
4.1 Material and Parts list/Tools .....	6
<b>5. Installation of the Gold-Mount Adapter Back</b> .....	<b>6</b>
5.1 Open the Gold-Mount Adapter Back .....	6
5.2 Connect the Gold-Mount Adapter Back.....	7
5.3 Finish the installation .....	9
<b>6. Gold-Mount Adapter Top</b> .....	<b>10</b>
6.1 Material and Parts list/Tools .....	10
<b>7. Installation of the Gold-Mount Adapter Top</b> .....	<b>10</b>
7.1 Open top Cover .....	10
7.2 Remove cover.....	11
7.3 Connect Gold-Mount Adapter Top.....	11
7.4 Finish the installation .....	12
<b>8. V-Mount Adapter Back</b> .....	<b>13</b>
8.1 Material and Parts list/Tools .....	13
<b>9. Installation of the V-Mount Adapter Back</b> .....	<b>13</b>
9.1 Open the V-Mount Adapter Back.....	13
9.2 Connect V-Mount Adapter Back .....	14
9.3 Finish the installation .....	16
<b>10. V-Mount Adapter Top</b> .....	<b>17</b>
10.1 Material and Parts list/Tools .....	17
<b>11. Installation of the V-Mount Adapter Top</b> .....	<b>17</b>
11.1 Open top Cover .....	17
11.2 Remove cover.....	18
11.3 Connect V-Mount Adapter .....	18
11.4 Finish the installation .....	19
<b>12. Installation of the new Back Adapter connector</b> .....	<b>20</b>
12.1 New parts.....	20
12.2 Remove Fan Cover.....	20
12.3 Remove fan.....	21
12.4 Install connector.....	22
12.5 Reinstall fan .....	24
<b>13. Functional Test</b> .....	<b>25</b>
<b>14. ARRI Service Centers</b> .....	<b>26</b>

Document ident number:     **K5.72949.0**

Document drawing number: **2033-10-00-07-02-B**

## 2. Safety Instructions and Legal Disclaimer

### 2.1 Safety Instructions

Please always follow these instructions to help ensure against injury to yourself and damage to the system or other objects.

This safety information is additional to the product-specific operating instructions in general and must be strictly observed for safety reasons. Furthermore, you are obliged to incorporate and observe sufficient safety measures of your own.

#### Warning signs



This symbol indicates possible risk of injury or damage to the equipment.



This symbol indicates the risk of electric shock or fire danger that could result in injury or equipment damage.

General safety instructions:

- Read and understand all safety and operating instructions before you operate or install the system.
- Retain all safety and operating instructions for future reference.
- Heed all warnings on the system and in the safety and operating instructions before you operate or install the system. Follow all installation and operating instructions.
- Do not use accessories or attachments not recommended by ARRI, as they may cause hazards and void the warranty.
- Do not repair any part of the system. Repairs must be carried out only by authorized ARRI repair shops.
- Do not remove any safety measure of the system.
- Do not operate the system in high humidity areas or expose it to water or moisture.
- Do not place the system on an unstable cart, stand, tripod, bracket, or table. The system may fall, causing serious personal injury and damage to the system or other objects.
- Operate the system using only the type of power source indicated in the manual. Unplug the power cord by gripping the power plug, not the cord.
- Never insert objects of any kind into any part of the system through openings, as the objects may touch dangerous voltage points or short-circuit connections. This could cause fire or electrical shock.
- Unplug the system from the power outlet before opening any part of the system or before making any changes on the systems, especially the attaching or removing of cables.
- Do not use solvents to clean.

- Do not loosen any screws, which are painted over!
- In order to ensure optimal radio connection the bushing must be free of dust and dirt at all times. If necessary, remove the antenna and clean antenna and bushing using pressured air. Do not use any tools that can harm antenna or bushing.

Specific safety instructions:

- Any violation of the safety instructions or neglect in personal care could cause serious injuries (including death) and damages on the system or other objects.

## Product Identification

When ordering parts or accessories, or if any questions should arise, please advise your type of product and serial number.

## 2.2 Legal Disclaimer

Before using the products described in this manual, be sure to read and understand all relevant instructions.

While ARRI endeavors to enhance the quality, reliability and safety of their products, customers agree and acknowledge that the possibility of defects thereof cannot be eliminated entirely. To minimize risks of damage to property or injury (including death) to persons arising from defects in the products, customers must incorporate sufficient safety measures in their work with the system and have to heed the stated canonic use.

No part of this document may be copied or reproduced in any form or by any means without prior written consent of ARRI. ARRI assumes no responsibility for any errors that may appear in this document. The information is subject to change without notice.

For current design-in, refer to the latest publications of ARRI data sheets or data books, etc., for the most up-to-date specifications. Not all products and/or types are available in every country. Please check with an ARRI sales representative for availability and additional information.

ARRI and its subsidiaries do not assume any liability for infringement of patents, copyrights or other intellectual property rights of third parties by or arising from the use of ARRI products or any other liability arising from the use of such products. No license, express, implied or otherwise, is granted under any patents, copyrights or other intellectual property rights of ARRI or others.

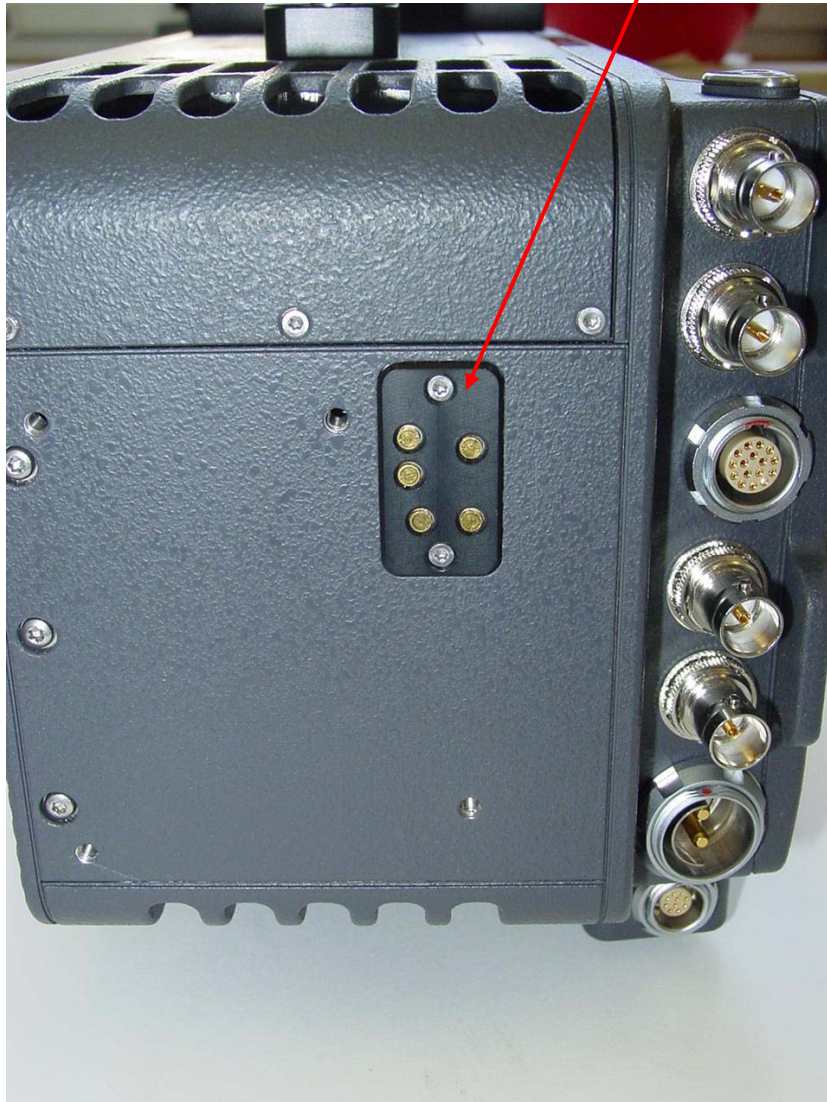
ARRI and its subsidiaries expressly exclude any liability, warranty, demand or other obligation for any claim, representation, or cause, or action, express or implied, whether in contract or tort, including negligence, or incorporated in terms and conditions, whether by statute, law or otherwise. In no event shall ARRI or its subsidiaries be liable for or you have a remedy for recovery of any special, direct, indirect, incidental, or consequential damages, including but not limited to lost profits, lost savings, lost revenues or economic loss of any kind or for any claim by third party, downtime, good-will, damage to or replacement of equipment or property, any costs or recovering of any material or goods associated with the assembly or use of our products, or any other damages or injury of persons and so on or under any other legal theory.

In the case one or all of the forgoing clauses are not allowed by applicable law, the fullest extent permissible clauses by applicable law are validated.

ARRI is a registered trademark of Arnold & Richter Cine Technik GmbH & Co Betriebs KG.

### 3. New connector for back mount battery adapters

All cameras, starting from serial number 2555 are fitted with a new connector for the back mount battery adapters as shown in the photo below.



This greatly simplifies the changing of back mount battery adapters in the field. All back mount battery adapters ordered separately, will be supplied with the required new connector for retrofitting existing cameras.

For the installation of this connector, see instructions in section 12.

## 4. Gold-Mount Adapter Back

### 4.1 Material and Parts list/Tools

Material: ARRI Gold-Mount-Adapter Back, order number: K2.72003.0  
Starting from serial number 2450, Gold-Mount Back adapters are fitted with a special connector.

Tools: TX 9 Screwdriver  
Guide Pins MV-964 (Order Number: K4.72286.0)

## 5. Installation of the Gold-Mount Adapter Back

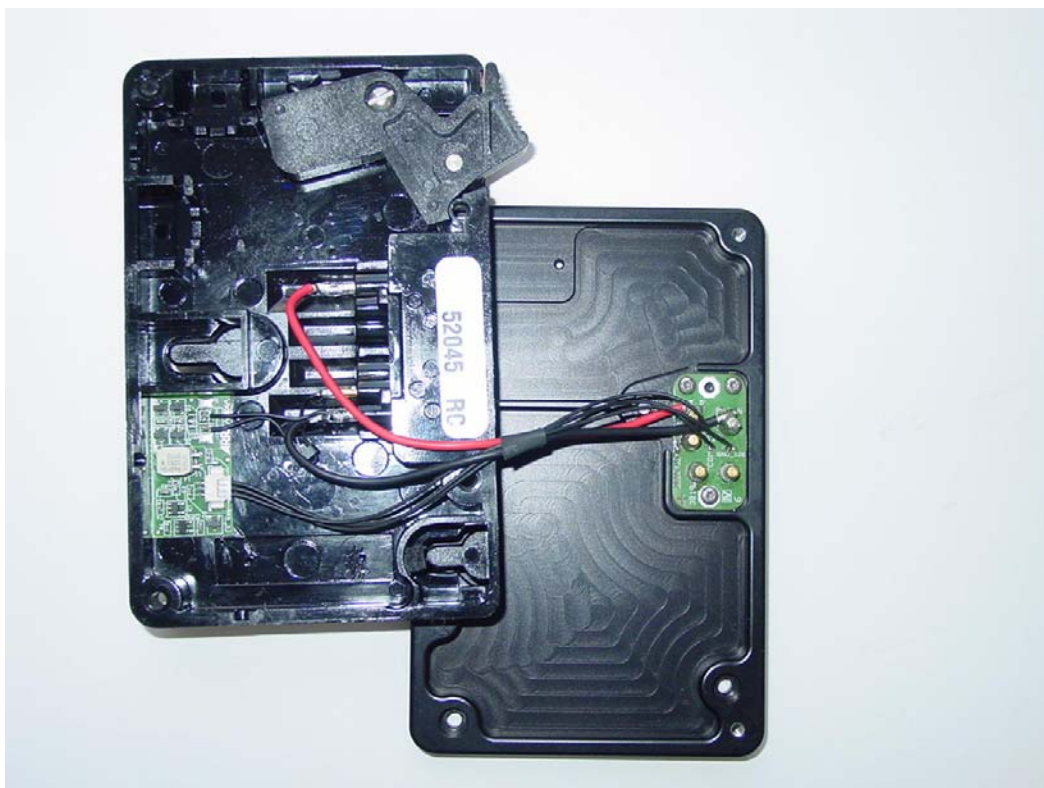


This operation should be carried out only by an experienced technician. If you feel uncomfortable in performing this installation, please do not hesitate to consult one of the authorized ARRI Service Centers.

Use appropriate care to avoid electro static discharge.

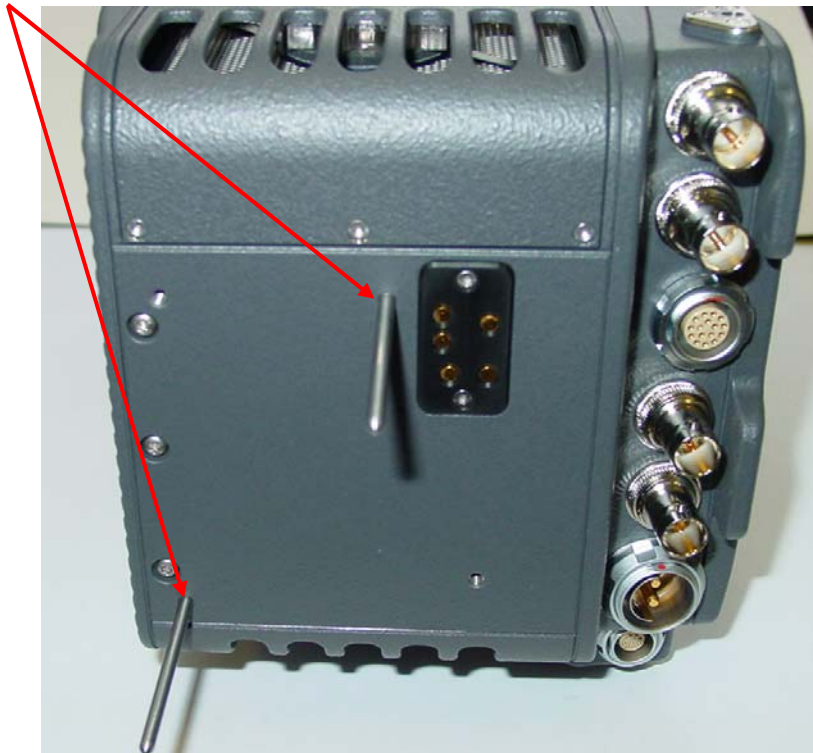
### 5.1 Open the Gold-Mount Adapter Back

Remove the 4 screws that hold the Gold-Mount to its mounting frame and open the adapter, using TX6 screwdriver.



## 5.2 Connect the Gold-Mount Adapter Back

Attach Guide Pins as shown below.

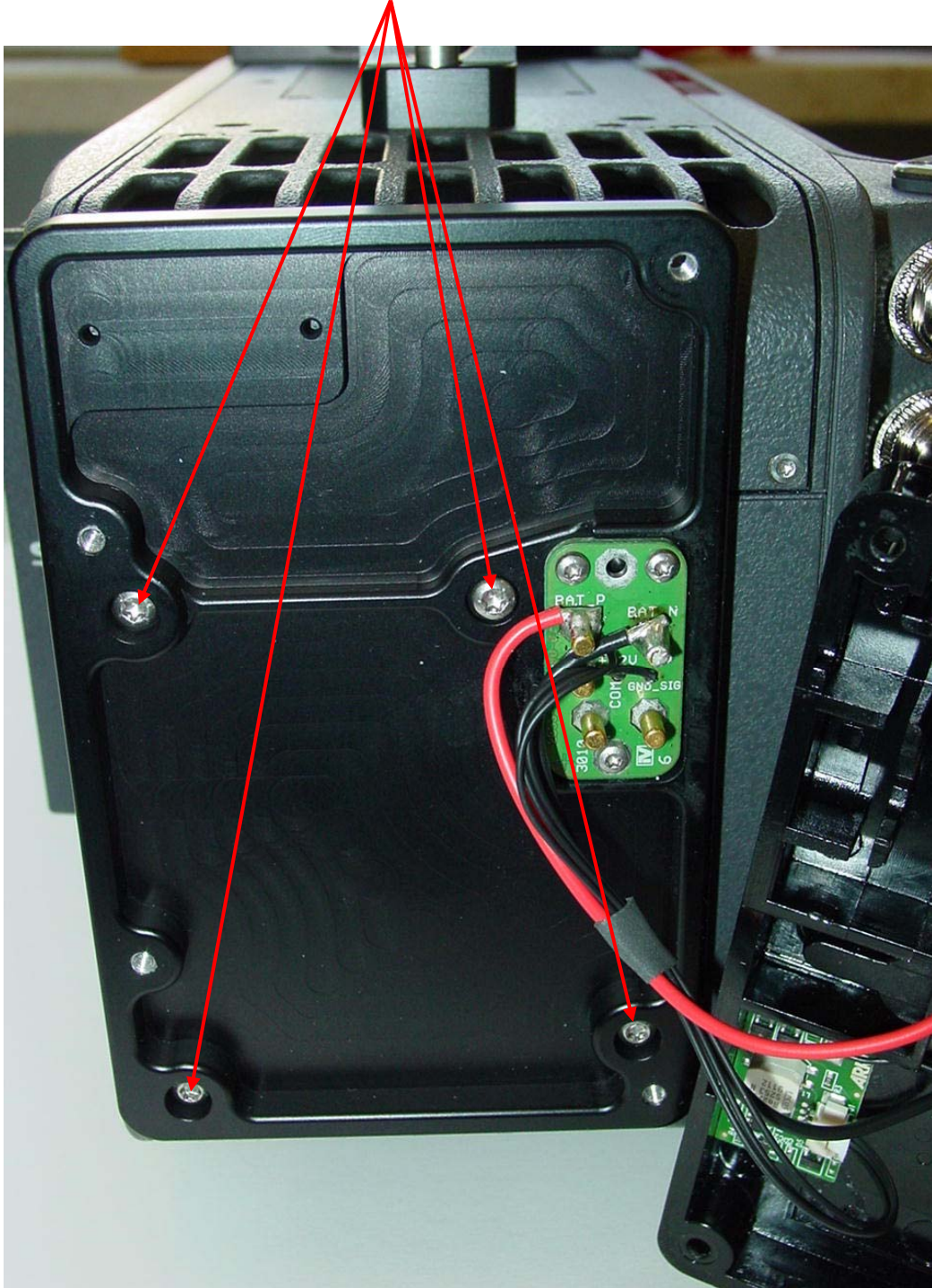


Push the mounting frame over the Guide Pins to its correct position and then secure it by using two of the four screws M3x8, as shown.



Then remove the Guide Pins.

Fasten all four screws with a TX9 screwdriver.



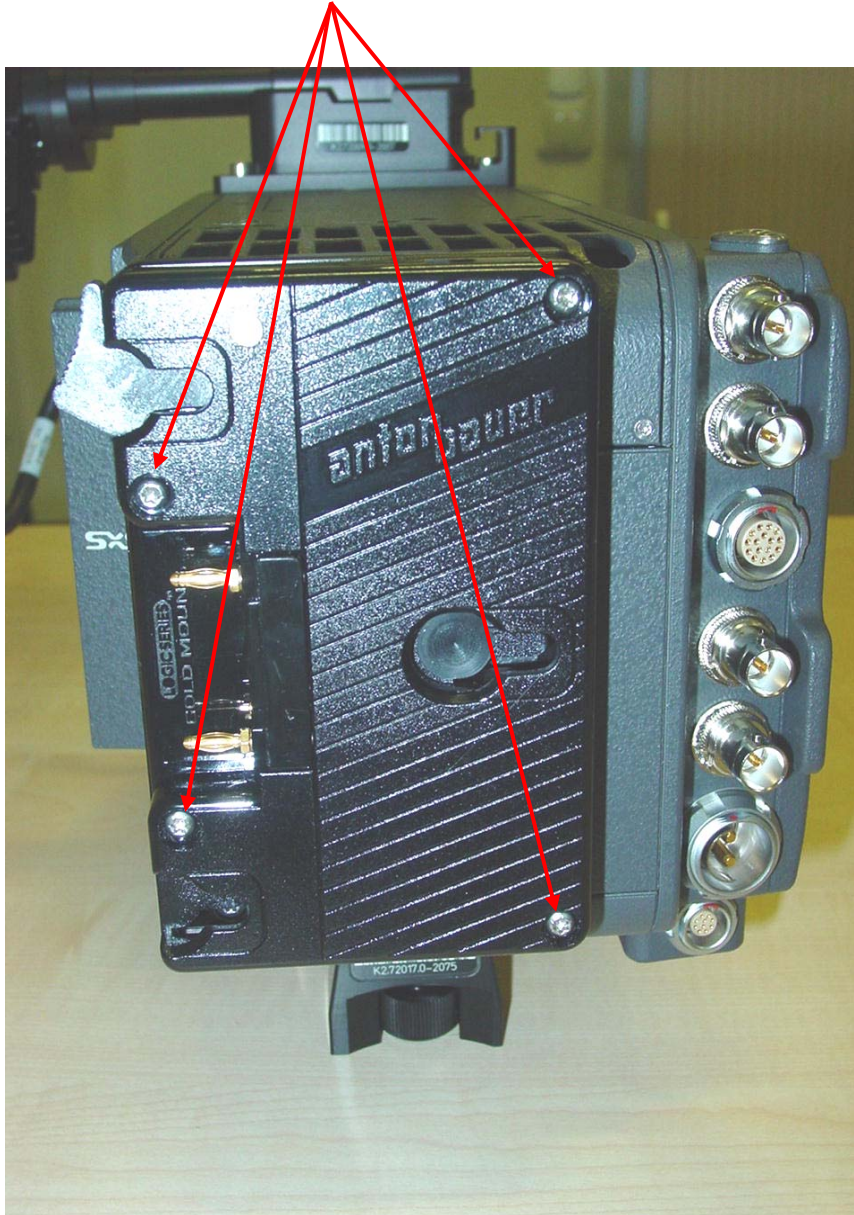
Make sure that the mounting frame for the Gold-Mount Adapter is firmly attached to the camera.



### 5.3 Finish the installation

Before closing the adapter, carefully bend in the cabling taking care not to damage the wiring.

Fix Gold-Mount to its mounting frame using the four M3x14 screws, using a TX9 screwdriver.



This completes the installation of the Gold-Mount Adapter Back.  
To perform a functional Test, see Chapter 13.

## 6. Gold-Mount Adapter Top

### 6.1 Material and Parts list/Tools

Material: ARRI Gold-Mount-Adapter Top, order number: K2.72006.0

Tools: TX6 Screwdriver  
3mm Allen Key  
Pair of tweezers

## 7. Installation of the Gold-Mount Adapter Top

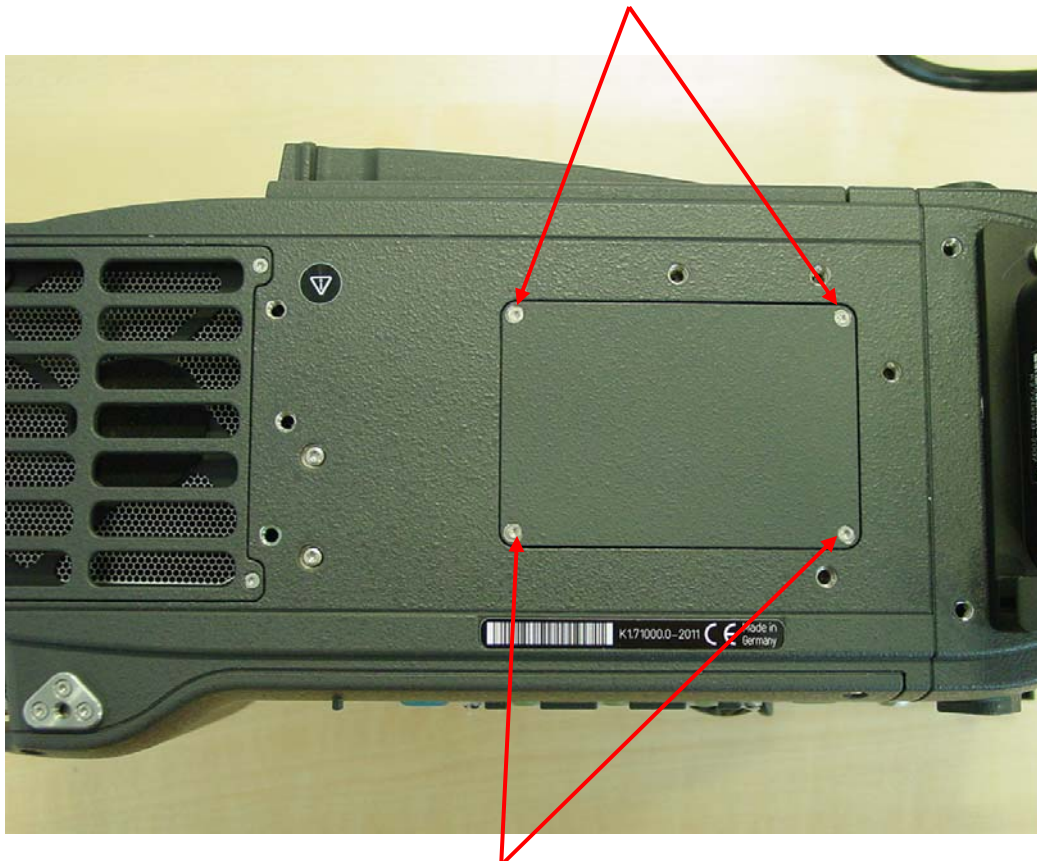


This operation should be carried out only by an experienced technician. If you feel uncomfortable in performing this installation, please do not hesitate to consult one of the authorized ARRI Service Centers.

Use appropriate care to avoid electro static discharge.

### 7.1 Open top Cover

Loosen the 4 screws indicated by arrows, using TX6 screwdriver.



Remove all four screws completely.

## 7.2 Remove cover

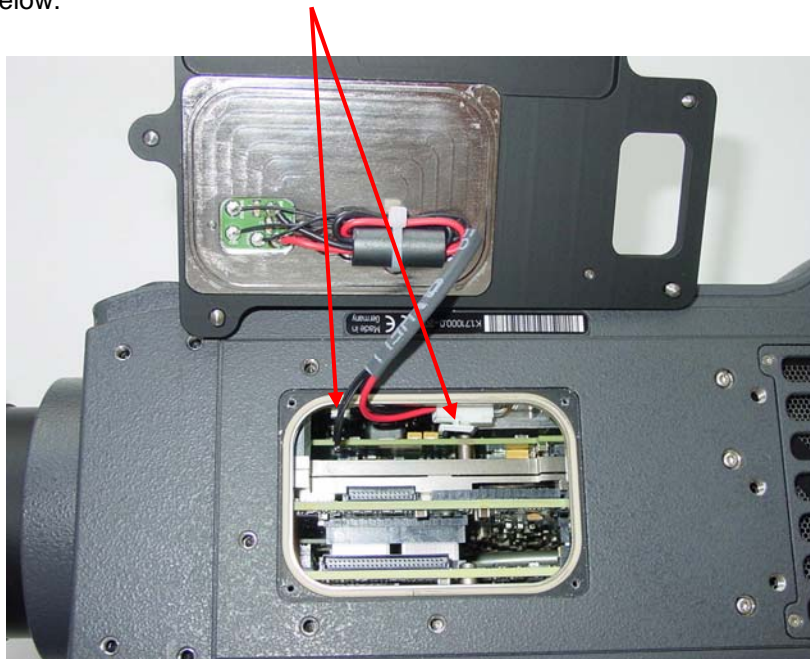
Lift off cover.

Connectors to be used by Gold-Mount Adapter Top



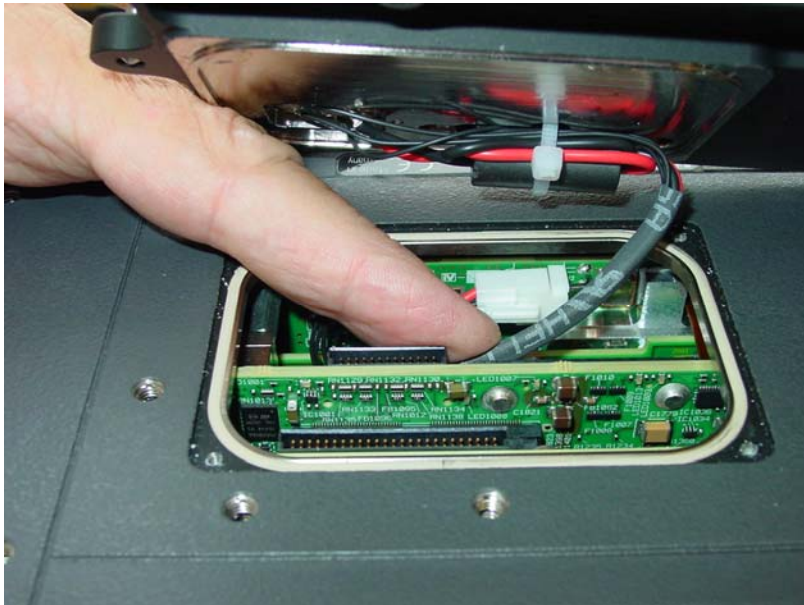
## 7.3 Connect Gold-Mount Adapter Top

Insert the cable plugs of the Gold-Mount Adapter Top in their respective connectors as shown in the photo below.

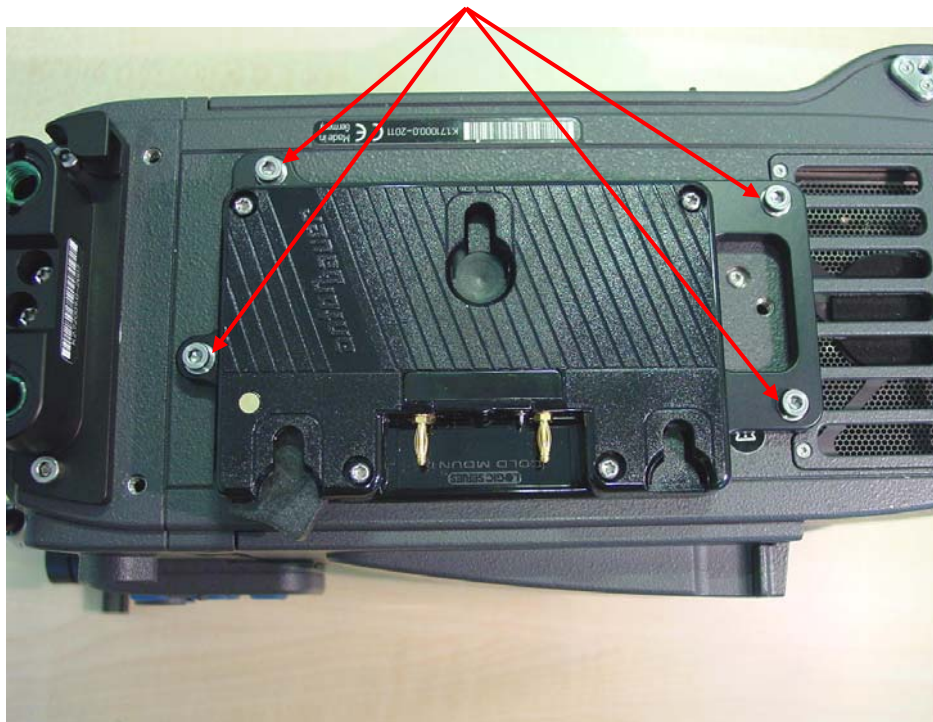


## 7.4 Finish the installation

Carefully bend in the cabling of the Gold-Mount Adapter Top.



Then tighten the 4 mounting screws using 3mm Allen key.



This completes the installation of the Gold-Mount Adapter Top.  
To perform a functional Test, see Chapter 13.

Note:

Save the cover and its fixing screws for later use.

## 8. V-Mount Adapter Back

### 8.1 Material and Parts list/Tools

Material: ARRI V-Mount-Adapter Back, order number: K2.72010.0  
Starting from serial number 2411, V-Mount Back adapters are fitted with a special connector.

Tools: TX 9 Screwdriver  
Guide Pins MV-964 (Order Number: K4.72286.0)

## 9. Installation of the V-Mount Adapter Back

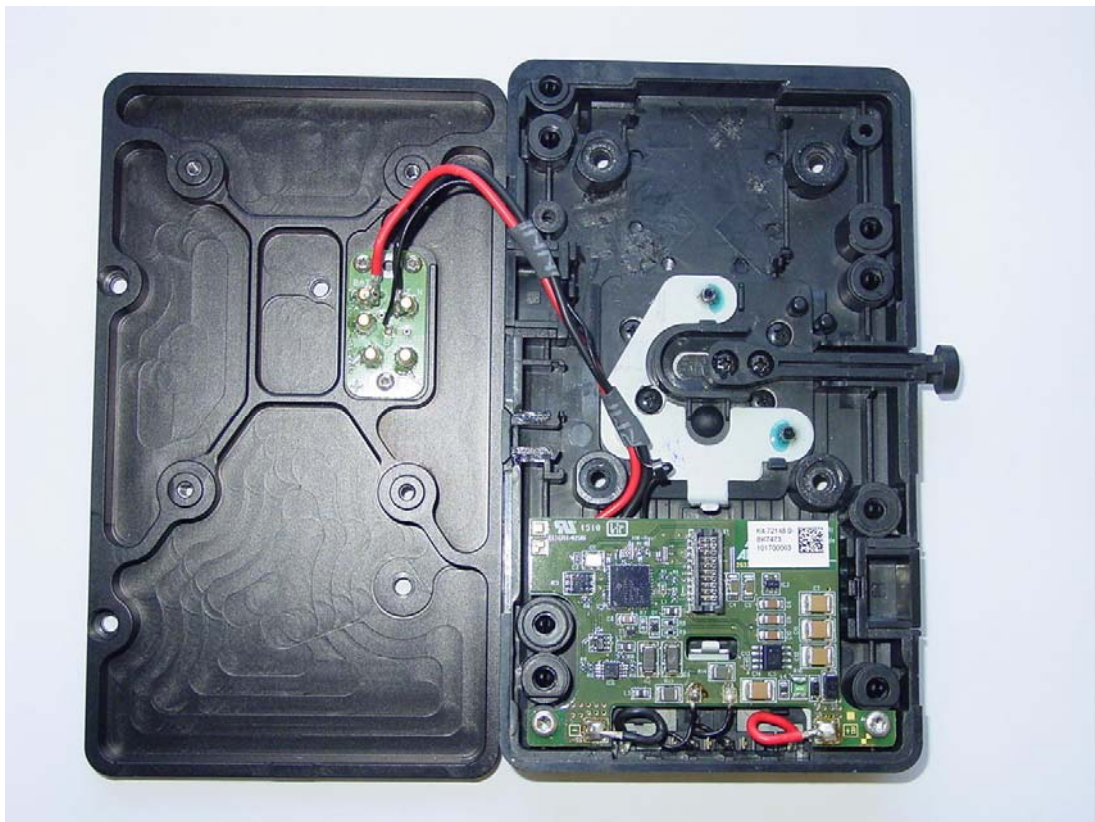


This operation should be carried out only by an experienced technician. If you feel uncomfortable in performing this installation, please do not hesitate to consult one of the authorized ARRI Service Centers.

Use appropriate care to avoid electro static discharge.

### 9.1 Open the V-Mount Adapter Back

Remove the 4 screws that hold the V-Mount to its mounting frame and open the adapter, using TX6 screwdriver.

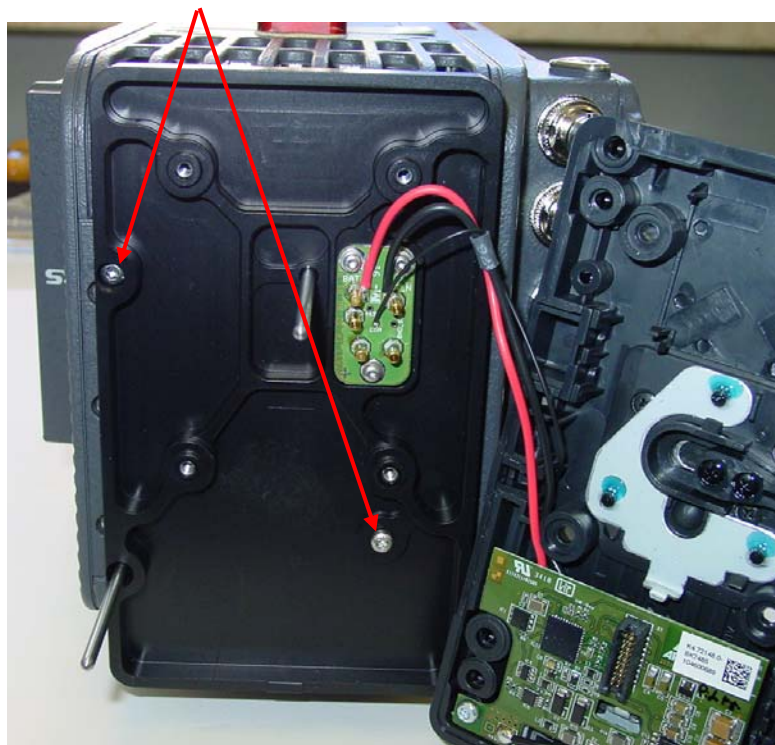


## 9.2 Connect V-Mount Adapter Back

Attach Guide Pins as shown below.

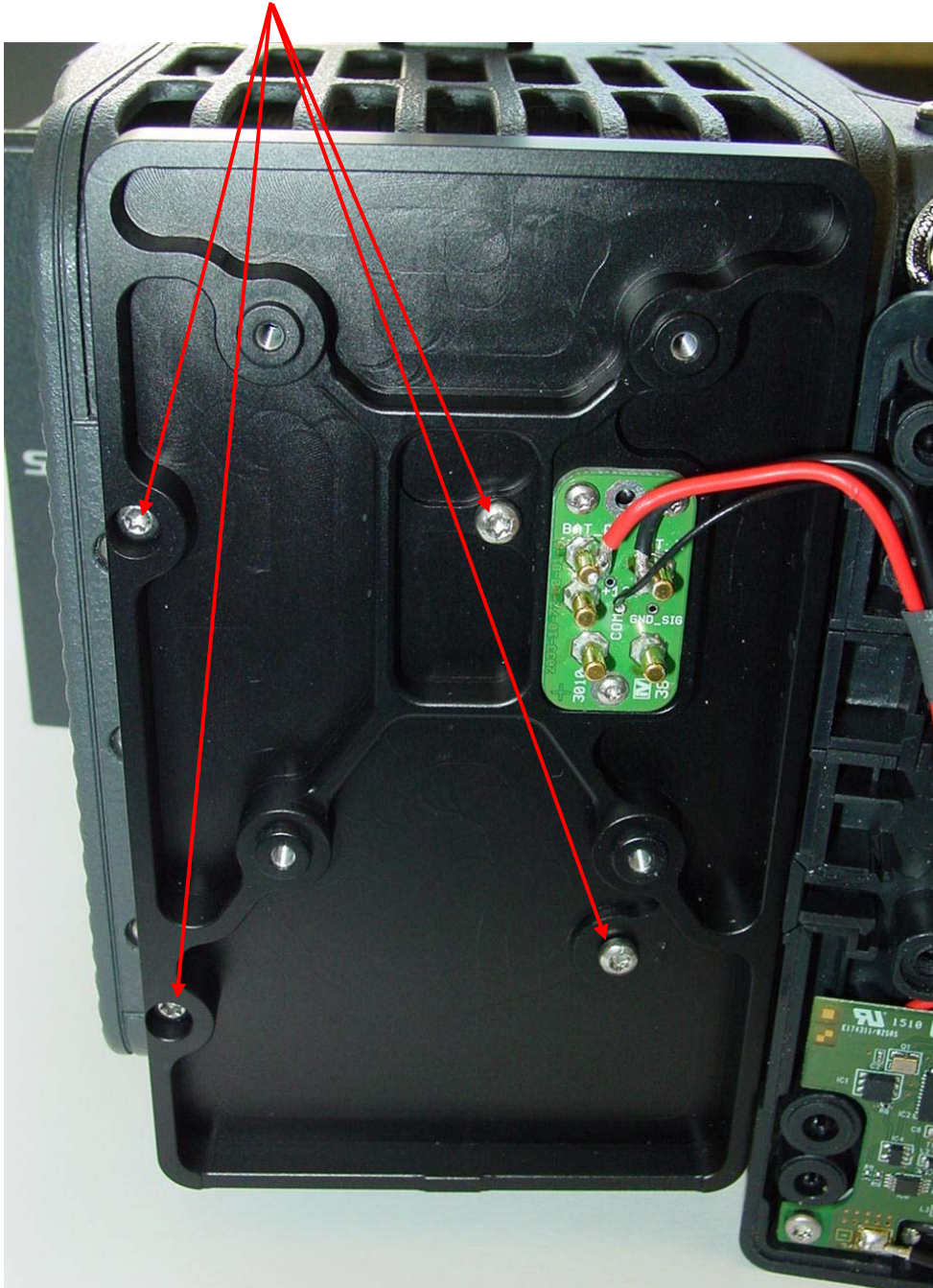


Push the mounting frame over the Guide Pins to its correct position and then secure it by using two of the four screws M3x8, as shown.



Then remove the Guide Pins.

Fasten all four screws with a TX9 screwdriver.

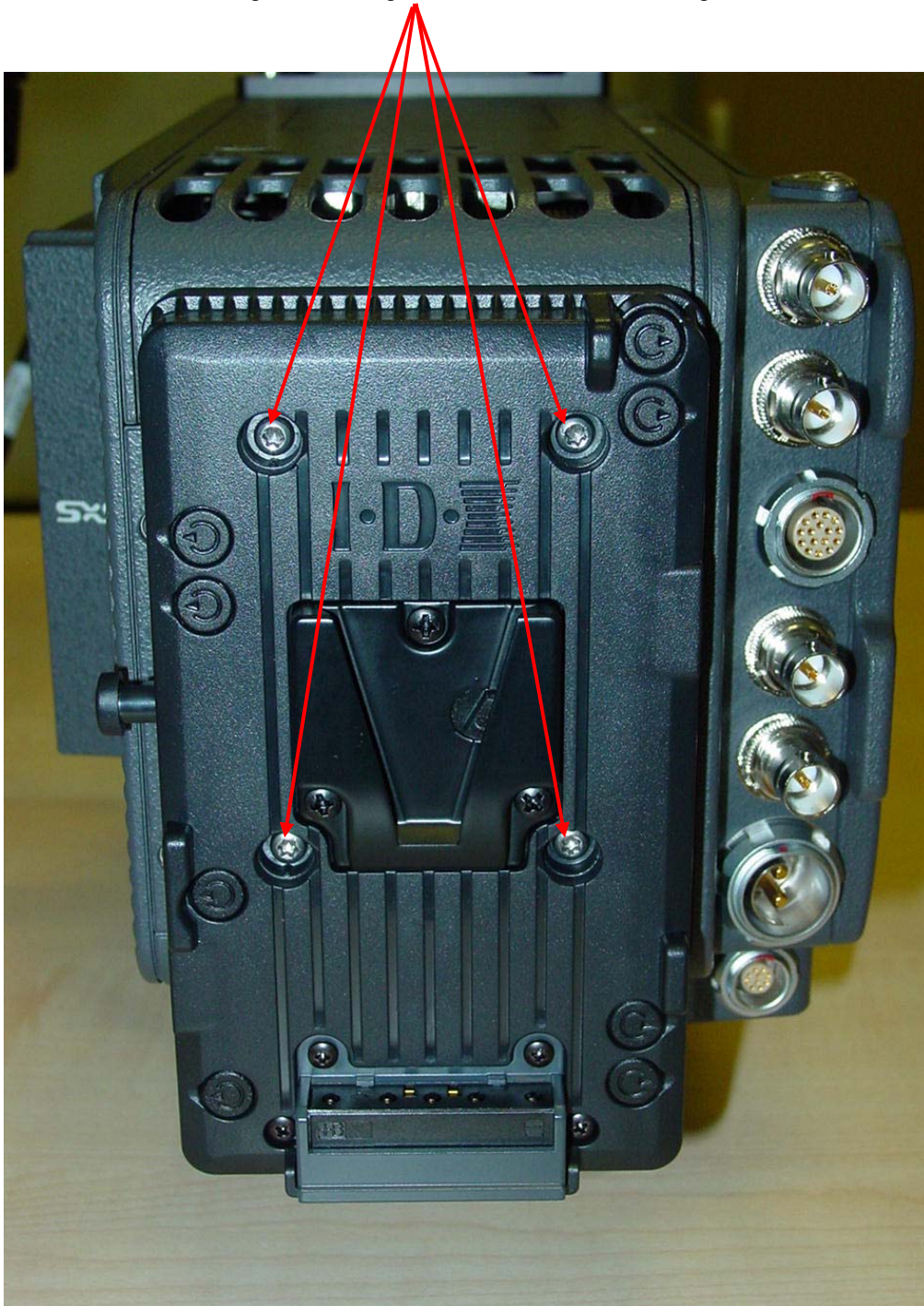


Make sure that the mounting frame for the V-Mount Adapter is firmly attached to the camera.

### 9.3 Finish the installation

Before closing the adapter, carefully bend in the cabling taking care not to damage the wiring.

Fix V-Mount to its mounting frame using the four M3x8 screws, using a TX9 screwdriver.



This completes the installation of the V-Mount Adapter Back  
To perform a functional Test, see Chapter 13.



## 10. V-Mount Adapter Top

### 10.1 Material and Parts list/Tools

Material: ARRI V-Mount-Adapter Top, order number: K2.72011.0

Tools: TX6 Screwdriver  
3mm Allen Key  
Pair of tweezers

## 11. Installation of the V-Mount Adapter Top

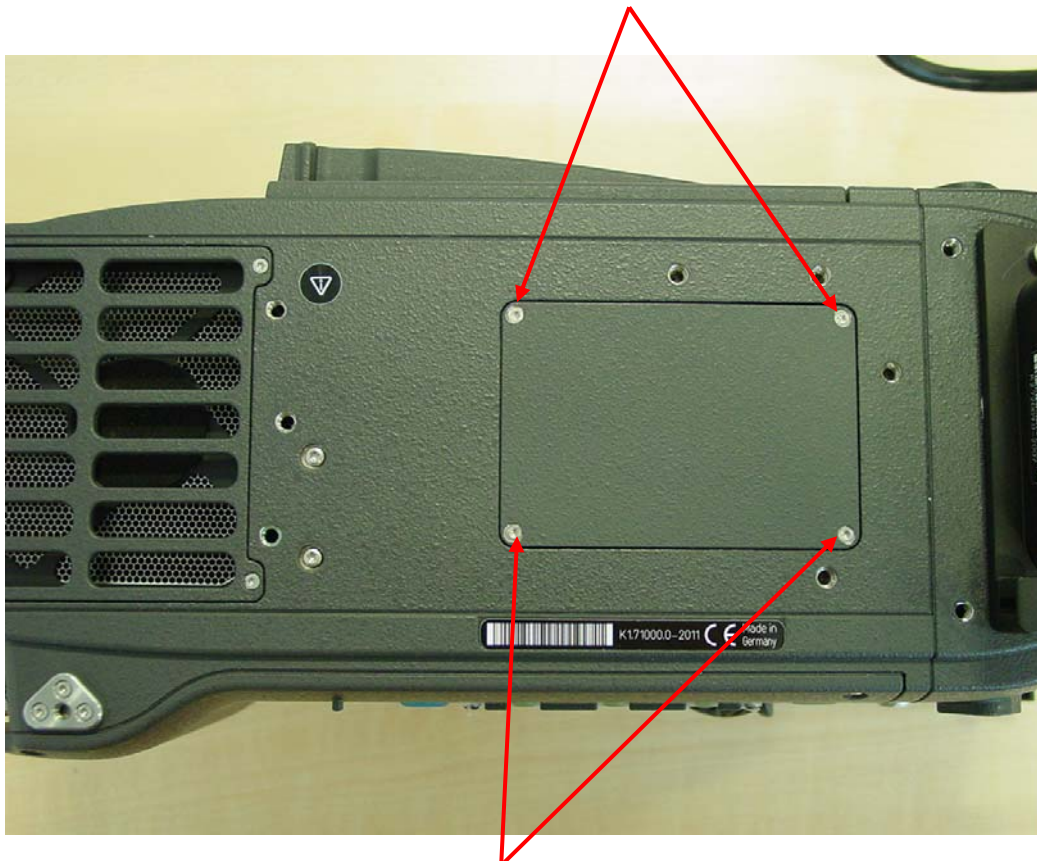


This operation should be carried out only by an experienced technician. If you feel uncomfortable in performing this installation, please do not hesitate to consult one of the authorized ARRI Service Centers.

Use appropriate care to avoid electro static discharge.

### 11.1 Open top Cover

Loosen the 4 screws indicated by arrows, using TX6 screwdriver

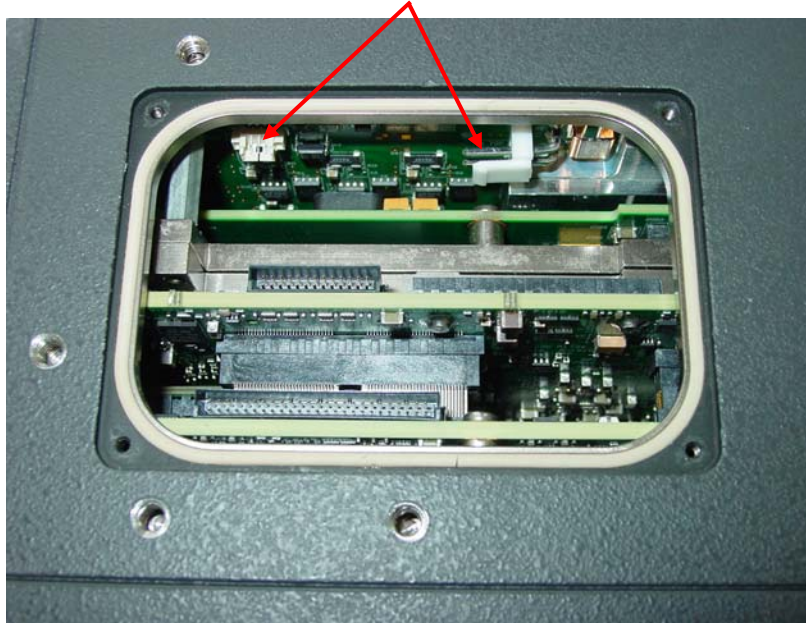


Remove all four screws completely.

## 11.2 Remove cover

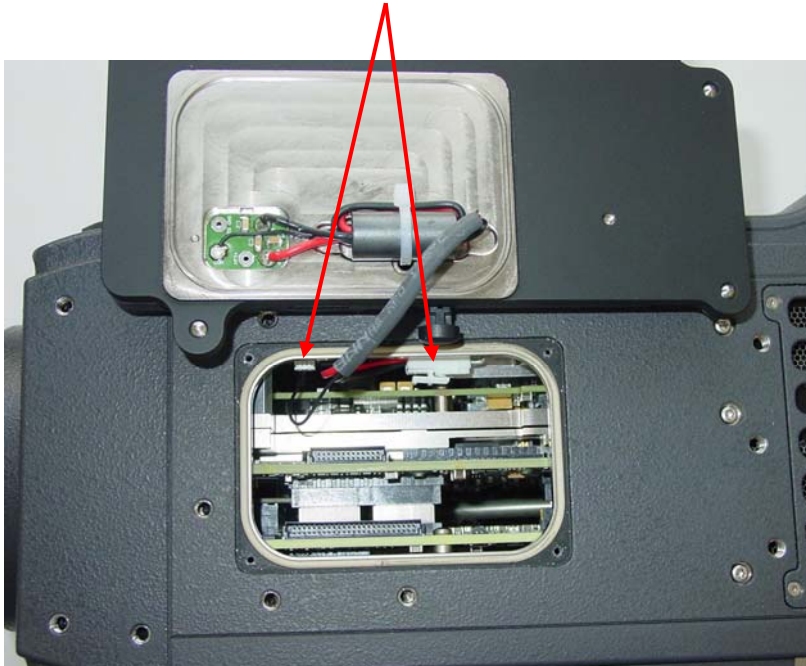
Lift off cover.

Connectors to be used by V-Mount Adapter Top



## 11.3 Connect V-Mount Adapter

Insert the cable plugs of the Gold-Mount Adapter Top in their respective connectors as shown in the photo below.

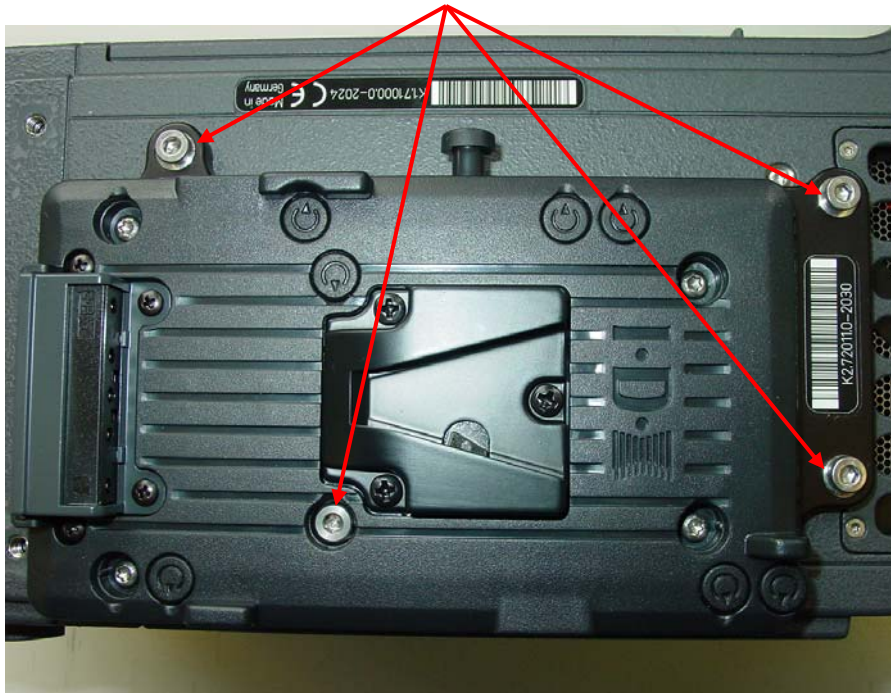


## 11.4 Finish the installation

Carefully bend in the cabling of the V-Mount Adapter Top.



Then tighten the 4 mounting screws using 3mm Allen Key.



This completes the installation of the V-Mount Adapter Top.  
To perform a functional Test, see Chapter 13.

Note:

Save the cover and its fixing screws for later use.

## 12. Installation of the new Back Adapter connector

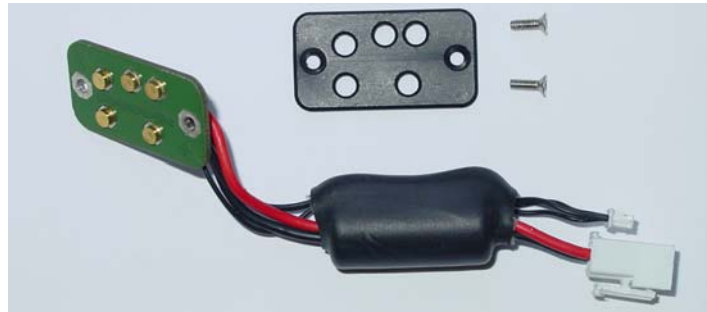


This operation should be carried out only by an experienced technician. If you feel uncomfortable in performing this installation, please do not hesitate to consult one of the authorized ARRI Service Centers.

Use appropriate care to avoid electro static discharge.

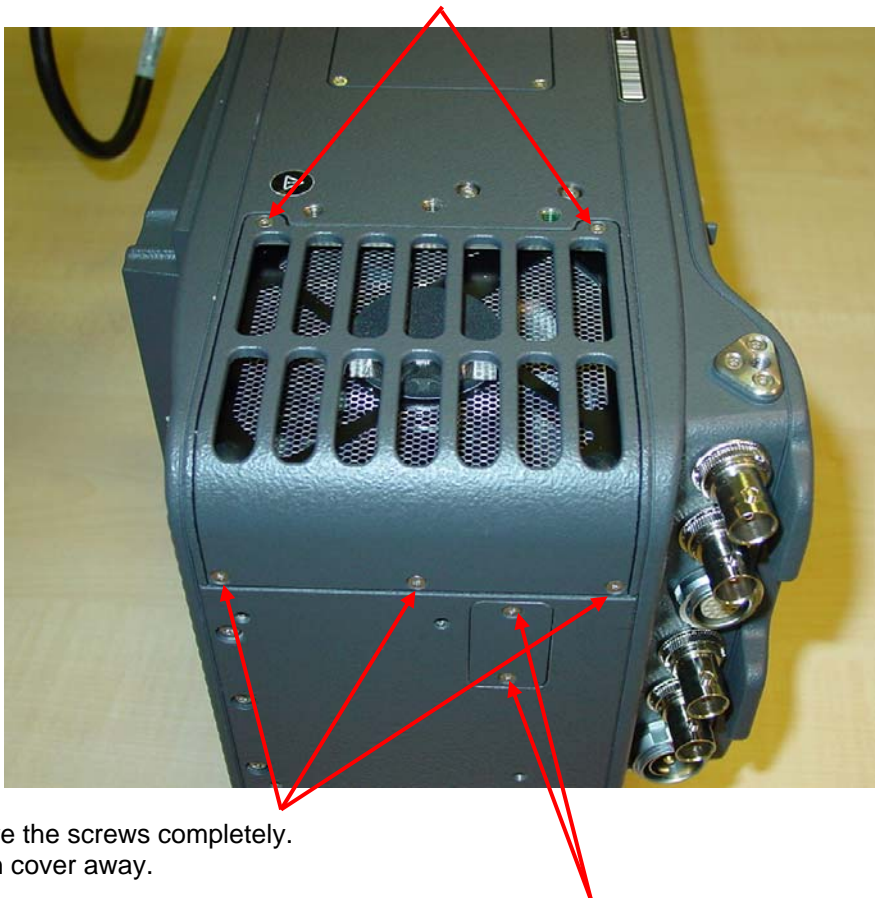
### 12.1 New parts

Service Kit K4.72275.0, as shown below



### 12.2 Remove Fan Cover

Loosen the 5 screws indicated by arrows, using TX6 screwdriver.



Do not remove the screws completely.  
Then take fan cover away.

Also remove the small cover lid on the back side using TX6 screwdriver.

### 12.3 Remove fan

Lift rear end of fan about one inch and then pull it back and out.



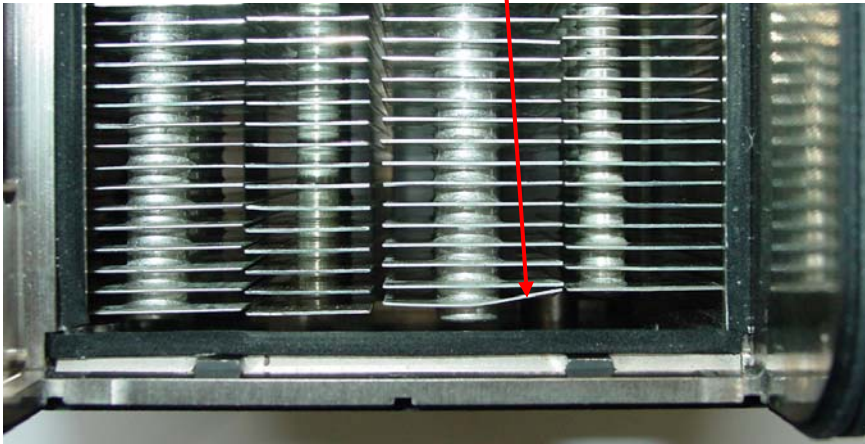
Carefully disconnect fan cable using tweezers and then remove the fan completely.



Do not use force!

## 12.4 Install connector

Carefully bend in upper corner of cooler fin as shown in the picture below.

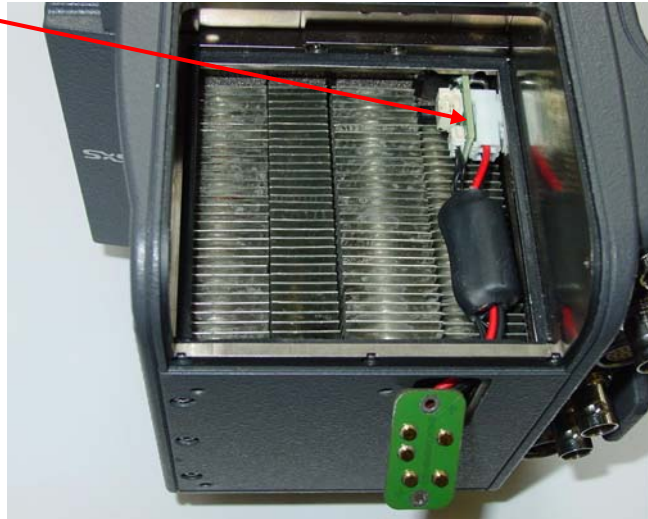


Insert the connector PCB from the inner side of camera back and push through the opening in the direction shown.



Then insert the connectors into their respective sockets as shown in the photo on the next page.

Insert connectors



Align cables and push connector PCB in place.



Fix plastic cover on the connector PCB with the two M2x5 screws, using a TX6 screwdriver.

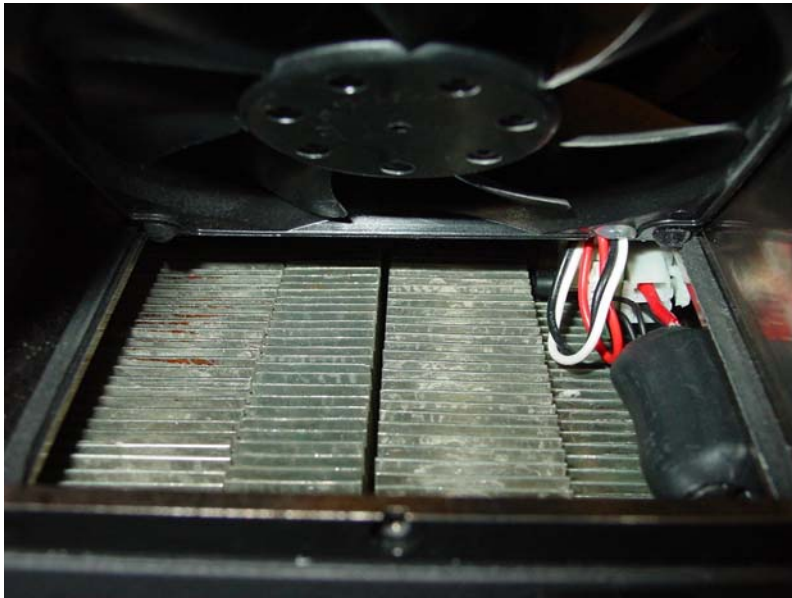


## 12.5 Reinstall fan

Fan cover inside view, showing retainer O-rings fitted to the screws.



Fan cable should fold in as shown in the picture below.



Then push the fan in and down until it fits as it was before removal.

Reassemble fan and cover.

This completes the installation of the new Back-Mount connector.  
To perform a functional Test, see Chapter 13.



## 13. Functional Test

This test should be performed using the type of battery that matches the adapter installed, e.g.: Gold-Mount or V-Mount.

Only batteries that support one of the following communication protocols will deliver a capacity indication on the camera display:

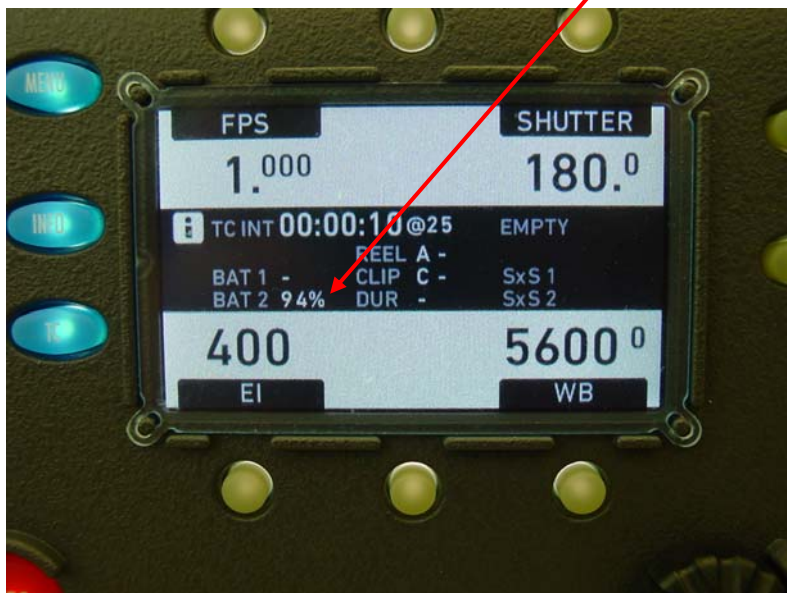
- a) Anton Bauer Gold-Mount batteries (proprietary protocol)
- b) IDX V-Mount Batteries (proprietary protocol)
- c) Other V-Mount batteries with Texas-Instruments protocol

Step 1: attach battery to camera

Step 2: switch on camera

Step 3: when camera has booted, display should read actual capacity value of the battery used.

If the battery does not support one of the above mentioned communications protocols, then there will be no % value shown.



### Trouble shooting hints:

If the camera will not power up, check one of the following:

For Top-Mount adapters: check that the connectors are properly fitted.

For Back-Mount adapters: check for dirt on the contact pins.

## 14. ARRI Service Centers

### Germany:

Arnold & Richter Cine Technik  
Türkenstrasse 89  
D-80799 München  
phone: (089) 3809-2121  
e-mail: service@arri.de

### USA:

ARRI Inc.  
(East Coast)  
617 Route 303  
Blauvelt, NY 10913-1109  
phone: (877) 565 2774  
e-mail: service@arri.com

ARRI Inc.  
(West Coast)  
600 North Victory Blvd.  
Burbank, CA 91502-1639  
phone: (877) 565 2774  
e-mail: service@arri.com

### GB:

ARRI (CT) Ltd.  
2 Highbridge  
Oxford Road, Uxbridge  
Middlesex, UB8 1LX  
phone: (0) 1895 457 051  
e-mail: service@arri-ct.com

### Italy:

ARRI ITALIA S.R.L.  
Via Placanica, 97  
00040 Morena (Roma)  
phone: + 39 335 749 00 70  
e-mail: service@arri.it

### Asia:

ARRI ASIA Ltd  
Room 290 3B, 29/F  
The Centrium  
60 Wyndham Street  
Central, Hong Kong  
phone: + 852 2571 9066  
e-mail: service@arriasia.hk

### Canada:

ARRI Canada Ltd  
415 Horner Avenue, Unit 11  
Etobicoke, Ontario  
Canada M8W 4W3  
phone: (416) 255 33 35  
e-mail: service@arrican.com